



Color-Keyed®

Metric Lugs and Splices
T&B Catalog Number:

MCC300M12

UPC Number:

78621095808

Status:

Active

Description:

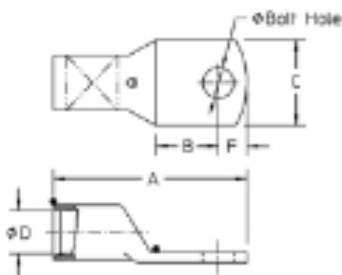
Copper One-Hole Metric Lug, Standard Barrel, Peep Hole, Max 35kV,
 300mm Wire, 12mm Bolt Size, Tin Plated

Features

Manufactured from seamless copper tubing that conforms to BS2781 with heavy-duty wall thickness, achieving maximum conductivity with low resistance.

Electro Tin-Plated for Corrosion Resistance. Chamfered Barrels Provide Ease of Strand Entry and Inspection hole facilitates full insertion of the conductor.

Cable Area Clearly Identified on Lug.



General

Style	Metric Standard Barrel Copper Lug
Material	Copper
Finish	Tin Plated
Wire Size	300mm
Number of Studs	1
Tongue Angle	Straight
Barrel Length	Standard
Barrel Shape	Standard
Tongue Width	Standard
Peep Hole	Y
Marking	Standard
Hole Shape	Round

Dimension Information

A (mm)	99.0
B (mm)	20.0
C (mm)	44.0
D (mm)	23.7
F (mm)	14.0

Specifications

Temperature Rating	105°C
Voltage Rating	600V

Tooling

Connector & Tooling Chart	Available on Website
---------------------------	----------------------

Packaging

T&B Order Multiple	10
Package in Units	10
T&B Sold in UOM	Each
T&B Weight Per UOM	56 lbs. per 100

Application Support

T&B Sales Drawings	wsd-000151
Overview	Available on Website

Notes

Dimensions given for reference only. Dimensions may vary up to +/- .030.

Certifications

RoHS Compliance	Yes
Webcat CE_recognized	Y

Certifications



File Nbr:
E9809

For further technical assistance, please contact us...

Thomas & Betts - USA
8155 T&B Blvd.
Memphis, TN 38125
www.tnb.com

T&B Technical Support
MS 3B-50
8155 T&B Blvd.
Memphis, TN 38125

Hours: 7AM - 6PM CDT
Monday-Friday
Phone: (888) 862-3289
Fax: (901) 252-1321
Email:techsupport@tnb.com