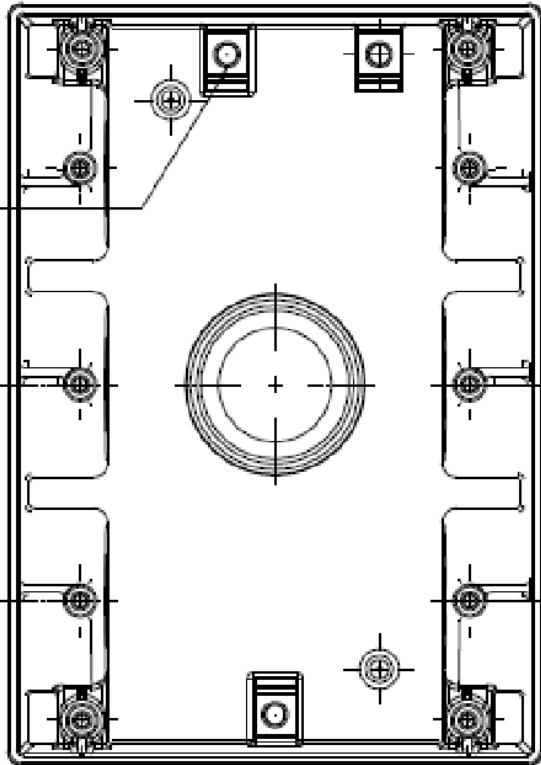


ZONE	NO.	DESCRIPTION	DATE	APPRD.	LTR. NO.
	1	SUBMIT FOR RELEASE	5/7/2020	PW	

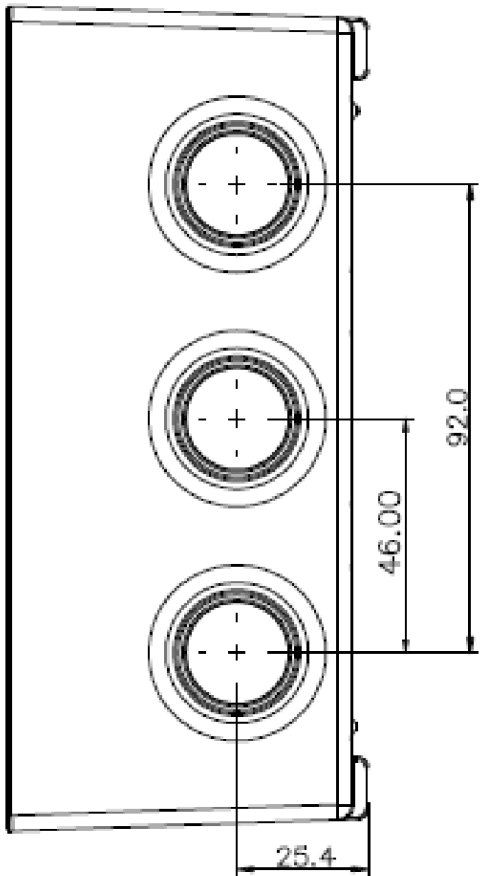
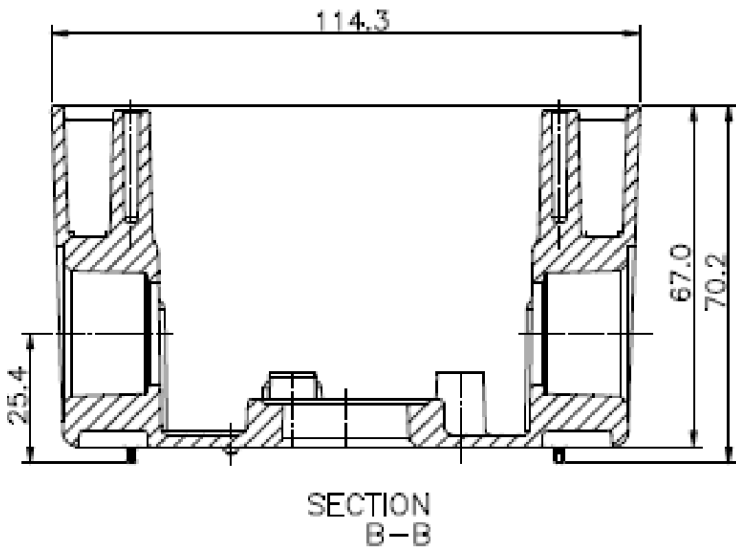
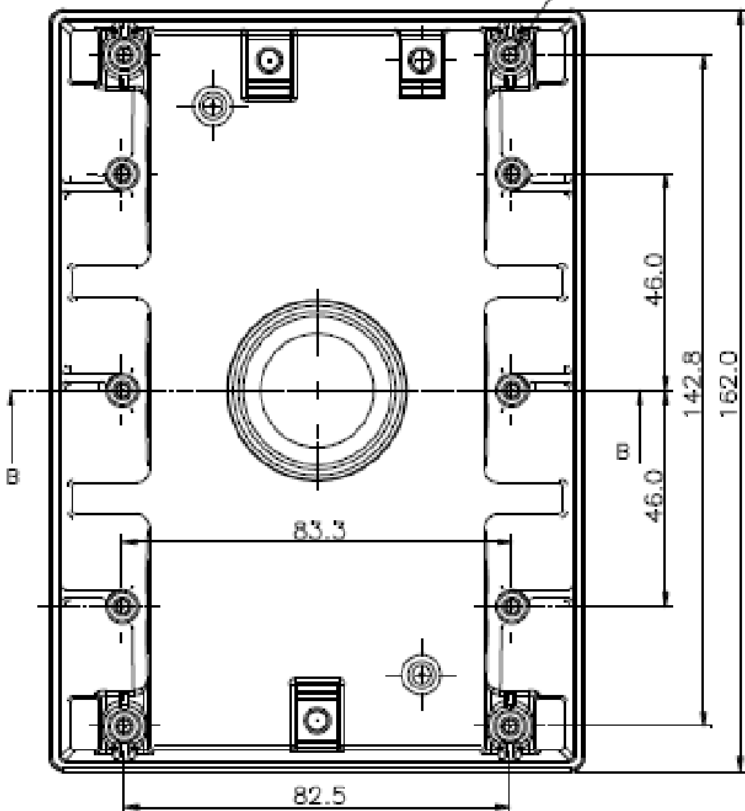
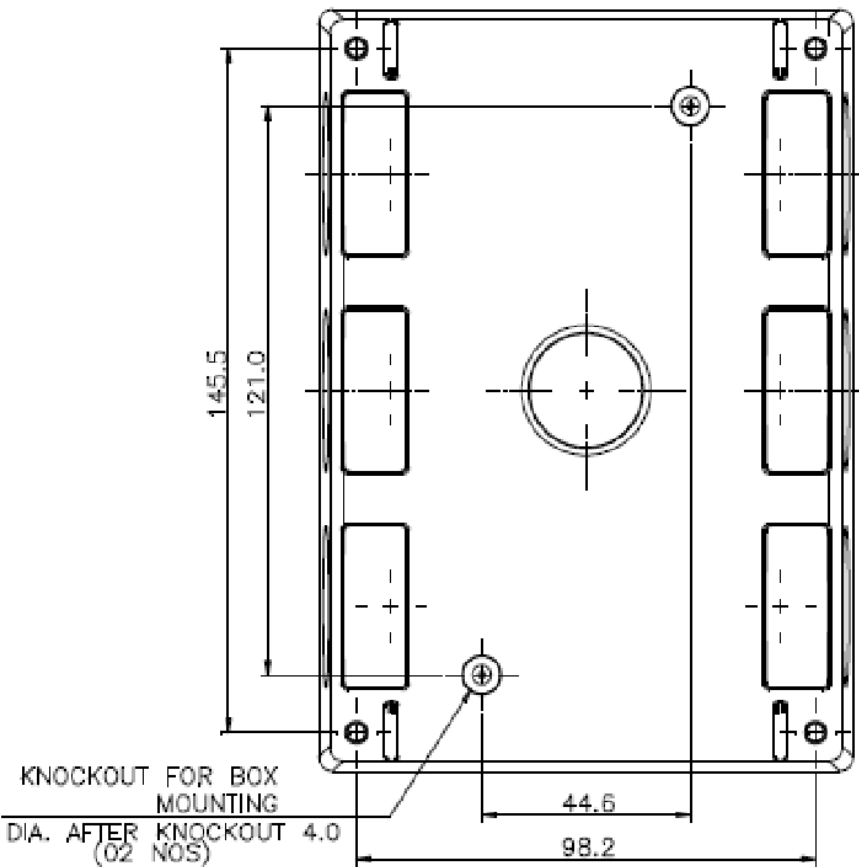
GROUNDING SCREW ASSEMBLED
NO 10 x 3/8" (03 NOS)



ACCESSORIES:

SR.No.	DESCRIPTION	QTY
1	CLOSURE PLUG	2
2	MOUNTING LUG	2
3	SCREW (NO. 8 X 1/4"L)	2

THREAD SIZE 6-32 UNC
TYP



3 GANG 2 5/8" WP OUTLET BOX

		VOLUME CU. IN.
TP7143	3/4" 7 HOLE - GRAY	55.0
TP7144	1" 7 HOLE - GRAY	55.0

NOTES:

- CERTIFICATION/LISTING:
- ENVIRONMENTAL RATING:
-WEATHERPROOF
-WET LOCATION



THIS IS PROPERTY OF EATON AND CONTAINS CONFIDENTIAL AND TRADE SECRET INFORMATION. POSSESSION DOES NOT CONVEY ANY RIGHTS TO LOAN, SELL OR DISCLOSE SAID INFORMATION. REPRODUCTION OR USE FOR ANY PURPOSE OTHER THAN WHICH IT WAS SUPPLIED MAY NOT BE MADE WITHOUT EXPRESS WRITTEN PERMISSION OF EATON. THIS DRAWING IS ON LOAN AND IS TO BE RETURNED UPON REQUEST.		TOLERANCES UNLESS OTHERWISE SPECIFIED		UNLESS OTHERWISE SPECIFIED, ALL PRIMARY DIMENSIONS ARE IN INCHES. DIMENSIONS IN [] ARE IN MILLIMETERS.		EATON CROUSE-HINDS SERIES	
MATERIAL:		.X .XX .XXX ANGLES		ORIGINAL DATE		TITLE	
FINISH:		DIM AND TOL IN ACCORDANCE WITH ASME Y14.5 2009.		REDRAWN DATE		3 GANG 2 5/8" DEEP WP BOX 3/4" & 1" W/7 HOLES	
		THIRD ANGLE PROJECTION		DRAWN BY		FIRST MADE FOR	
				CHECKED BY		WEATHERPROOF	
				APPROVED BY		SIZE	
NEXT ASSY.				APPROVED BY		C	
USED ON						CODE IDENT. NO.	
APPLICATION						TP7	
						REV.	
						1	
						SCALE 1:1	
						WT.	
						SHEET 1 OF 1	