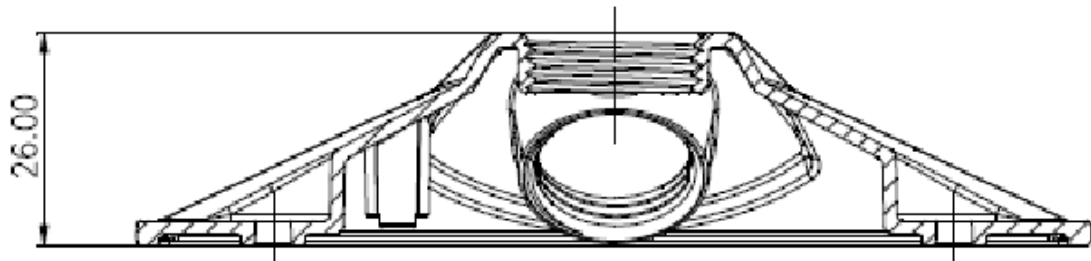


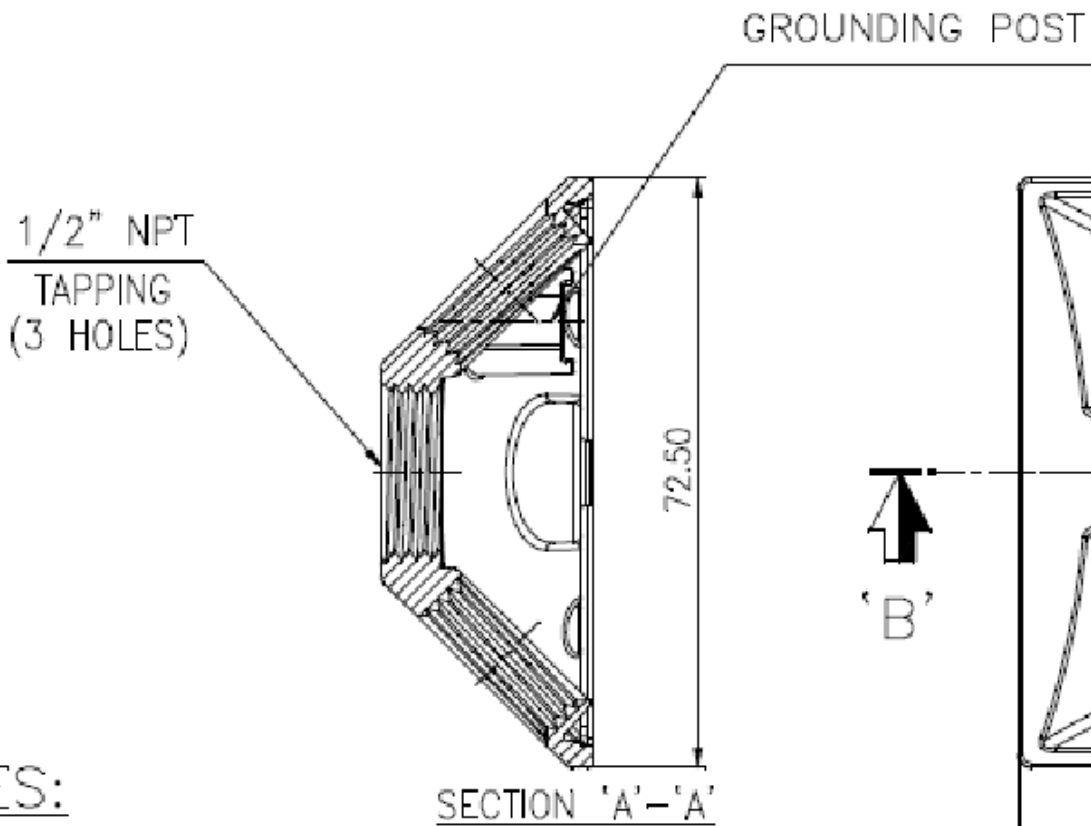
ZONE	NO.	DESCRIPTION	DATE	APPRD.	LTR. NO.
	1	SUBMIT FOR RELEASE	5/7/2020	PW	

1/2" 3 HOLE WP RECTANGULAR COVER

TP7322	BONZE
TP7320	GREY
TP7321	WHITE

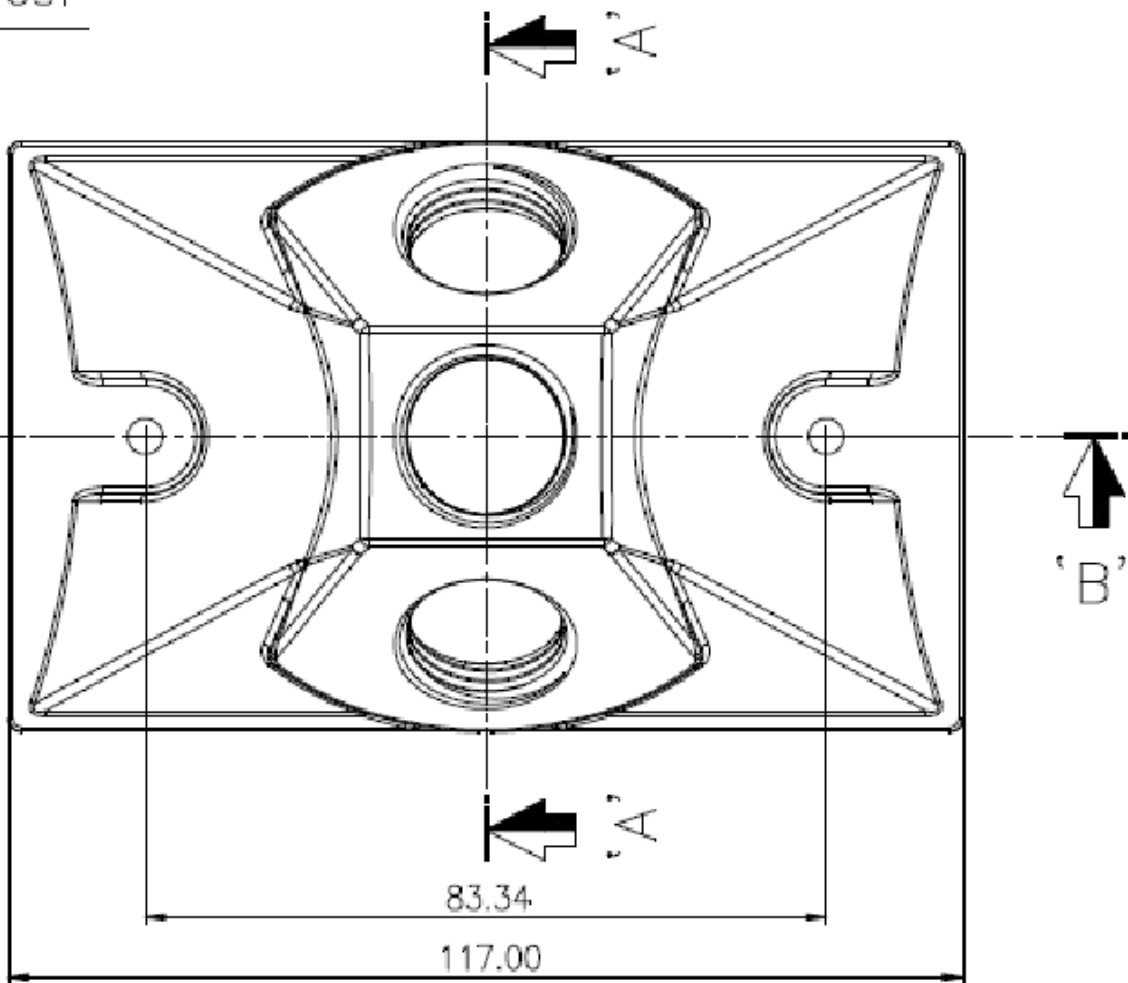


SECTION 'B'-'B'




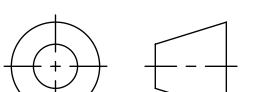
ACCESSORIES:

SR.NO	PART NAME	MATERIAL	QUANTITY
1	GASKET	POLYETHELENE	1
2	SCREW 6X0.50"	PLATED STEEL	2
3	CLOSURE PLUG	PLASTIC	2
4	SCREW 8X0.31"	PLATED STEEL	1



NOTES:

1. CERTIFICATION/LISTING: 
2. ENVIRONMENTAL RATING:
-WEATHERPROOF
-WET LOCATION

THIS IS PROPERTY OF EATON AND CONTAINS CONFIDENTIAL AND TRADE SECRET INFORMATION. POSSESSION DOES NOT CONVEY ANY RIGHTS TO LOAN, SELL OR DISCLOSE SAID INFORMATION. REPRODUCTION OR USE FOR ANY PURPOSE OTHER THAN WHICH IT WAS SUPPLIED MAY NOT BE MADE WITHOUT EXPRESS WRITTEN PERMISSION OF EATON. THIS DRAWING IS ON LOAN AND IS TO BE RETURNED UPON REQUEST.	TOLERANCES UNLESS OTHERWISE SPECIFIED		UNLESS OTHERWISE SPECIFIED, ALL PRIMARY DIMENSIONS ARE IN INCHES. DIMENSIONS IN [] ARE IN MILLIMETERS.					
	.X	in.	mm	ORIGINAL DATE	TITLE			
	.XX	± .1	± .3	REDRAWN DATE	1/2" 3HL WP RECT COV			
	.XXX	± .01	± .13	DRAWN BY	FIRST MADE FOR WEATHERPROOF			
	ANGLES	± .005	± .000	CHECKED BY	SIZE	CODE IDENT. NO.	TP7	REV. 1
	DIM AND TOL IN ACCORDANCE WITH ASME Y14.5 2009.		APPROVED BY	SCALE 1:1	WT.	SHEET 1 OF 1		
	THIRD ANGLE PROJECTION		APPROVED BY					
								
	NEXT ASSY. USED ON							
	APPLICATION							