

Cam-Lok™ J Series Connectors are specifically designed to meet the needs of demanding portable applications. J Series Plugs and Receptacles are the proven industry standard single pole connectors for reliability and service with added safety.

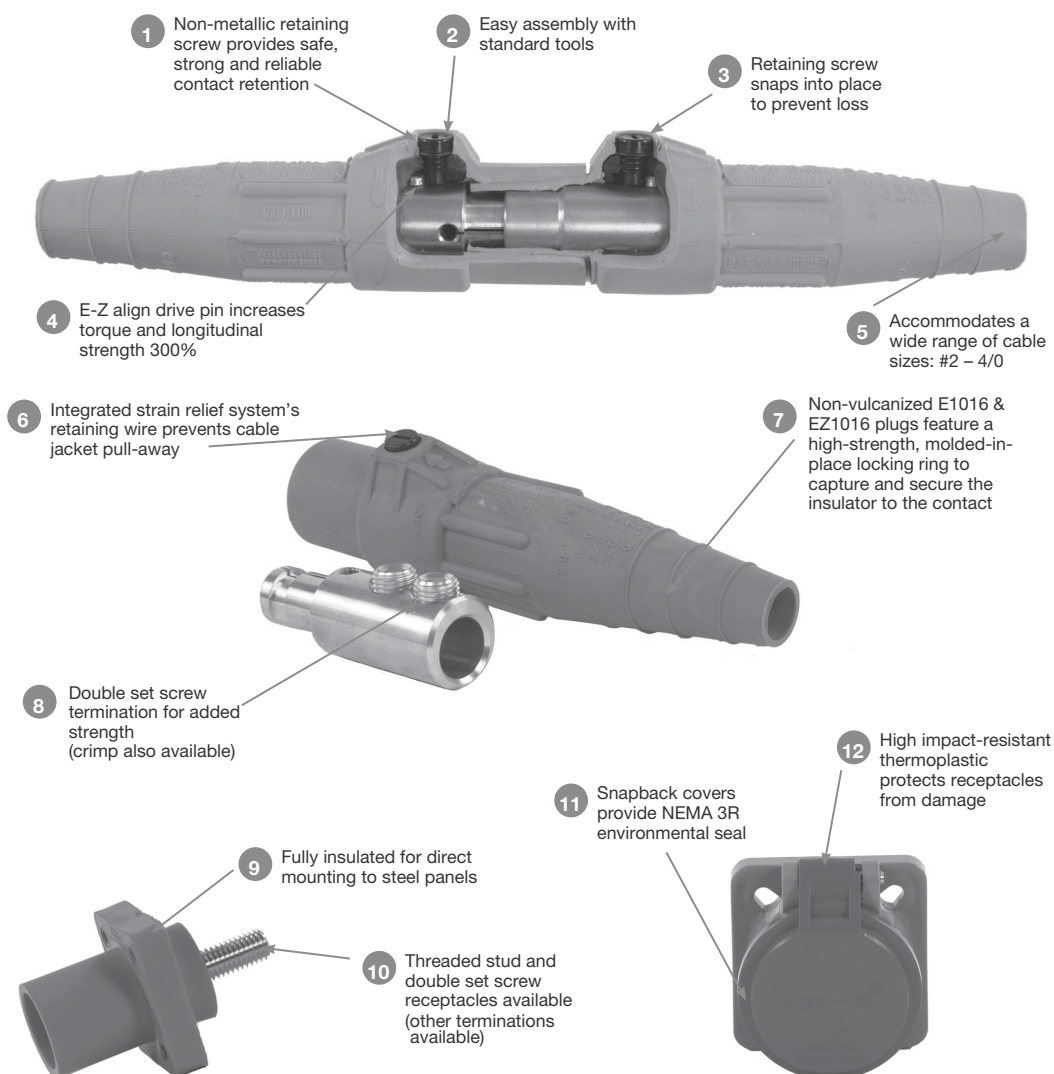
Applications:

- J Series Plugs and Receptacles are specifically designed for industrial power distribution applications requiring quick, tool-free connections
- Ideal for portable power, power distribution, motors, generators, and entertainment applications
- J Series replaces traditional hard wiring while cutting downtime and maintenance
- J Series Connectors are insulated, shatter/crack-resistant and watertight, plus heat-, weather-, ozone-, oil-, and abrasion-resistant

Certifications and Compliances:

- Listed to UL498, File No. E67181
- CSA certified to C22.2 No. 182.3 LR13963

Features:



Cable Size #8 - #4 AWG
600V AC/DC
Up to 150A Continuous

J Series E1015, Elastomeric, Non-vulcanized, Single Set Screw Connection

Features:

- Double cam principle provides a positive, vibration-proof connection
- Self-compensating for wear
- No moving contact surfaces, eliminating arcing or burning
- Superior electro-mechanical connections
- Locked contacts will withstand a pulling force of 1,000 lbs.
- 1/3 of a turn assures a high pressure contact approaching 600 lbs. per sq. in., providing minimum resistance
- Contacts carefully machined from a high conductivity brass to a smooth sliding fit and easy locking action
- Watertight elastomeric insulators molded from colorfast material, color-coded for easy phase identification
- Recessed contacts protected by insulating jacket that extends beyond contact ends for safety
- Integrated strain relief system features a retaining wire that prevents cable jacket pull-away and bare conductor exposure
- Accepts a wide range of cable sizes


Testing and Code Compliance:

- Listed to UL498, File No. E67181
- CSA certified to C22.2 No. 182.3-M1987, File No. LR13963

Material Characteristics:


- Insulator - TPE
- Environmental rating: NEMA 3R
- Temperature rating: -40°C to 105°C

Ordering Information - Set Screw Non-vulcanized Male Plugs:

	Cable Size	Color	Complete Cat. #	Contact Only Cat. #	Insulator Only Cat. #
	#8 - #4	Black	E1015-8306	A100864-1	A100869-7
	#8 - #4	Red	E1015-8308	A100864-1	A100869-9
	#8 - #4	Green	E1015-8310	A100864-1	A100869-11
	#8 - #4	White	E1015-8311	A100864-1	A100869-12
	#8 - #4	Blue	E1015-8313	A100864-1	A100869-14
	#8 - #4	Brown	E1015-8314	A100864-1	A100869-15
	#8 - #4	Orange	E1015-8309	A100864-1	A100869-10
	#8 - #4	Yellow	E1015-8307	A100864-1	A100869-8

E1015-8313

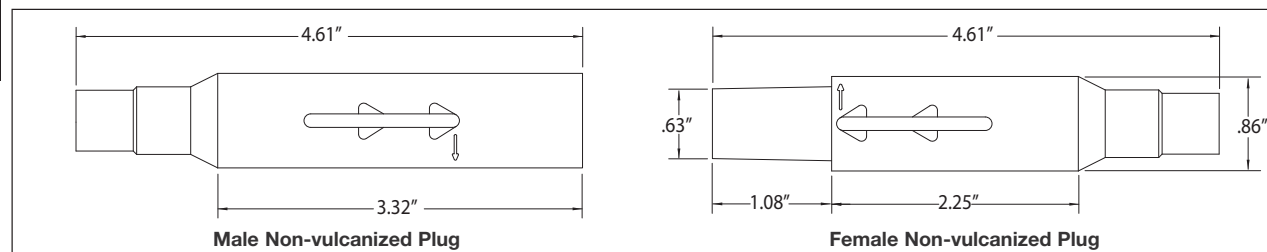
Ordering Information - Set Screw Non-vulcanized Female Plugs:

	Cable Size	Color	Complete Cat. #	Contact Only Cat. #	Insulator Only Cat. #
	#8 - #4	Black	E1015-8331	A100865-1	A100868-7
	#8 - #4	Red	E1015-8333	A100865-1	A100868-9
	#8 - #4	Green	E1015-8335	A100865-1	A100868-11
	#8 - #4	White	E1015-8336	A100865-1	A100868-12
	#8 - #4	Blue	E1015-8338	A100865-1	A100868-14
	#8 - #4	Brown	E1015-8339	A100865-1	A100868-15
	#8 - #4	Orange	E1015-8334	A100865-1	A100868-10
	#8 - #4	Yellow	E1015-8332	A100865-1	A100868-8

E1015-8333

To order single packaged products, add a "K" suffix to the complete catalog number.

Dimensions:



Male Non-vulcanized Plug

Female Non-vulcanized Plug

Cable Size #8 - #4 AWG
600V AC/DC
Up to 150A Continuous

J Series E1015, Rubber, Vulcanized, Crimp Connection

Features:

- Vulcanizing permanently affixes plug insulator to cable for maximum protection against bare conductors, water, all kinds of weather, corrosion, and other contaminants (requires vulcanizing kit/presses)
- Vulcanizing also reduces cable breakage by distributing flexing over a wide area for an effective strain relief system
- Double cam principle provides a positive, vibration-proof connection
- Self-compensating for wear
- No moving contact surfaces, eliminating arcing or burning
- Superior electro-mechanical connections
- Locked contacts will withstand a pulling force of 1,000 lbs.
- 1/3 of a turn assures a high pressure contact approaching 600 lbs. per sq. in., providing minimum resistance
- Contacts carefully machined from a high conductivity brass to a smooth sliding fit and easy locking action
- Watertight neoprene insulators molded from colorfast material, color-coded for easy phase identification
- Recessed contacts protected by insulating jacket that extends beyond contact ends for safety

Testing and Code Compliance:

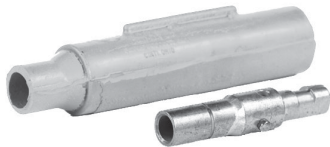
- Listed to UL498, File No. E67181
- CSA certified to C22.2 No. 182.3-M1987, File No. LR13963

Material Characteristics:

- Insulator - rubber
- Environmental rating: NEMA 4
- Temperature rating: -40°C to 105°C

Ordering Information - Crimp Vulcanized Male Plugs:

Cable Size	Color	Complete Cat. #	Contact Only Cat. #	Insulator Only Cat. #
#8 - #4	Black	E1015-1	A100087-1	A100092-1
#8 - #4	Red	E1015-3	A100087-1	A100092-3
#8 - #4	Green	E1015-5	A100087-1	A100092-5
#8 - #4	White	E1015-6	A100087-1	A100092-6
#8 - #4	Blue	E1015-19	A100087-1	A100092-7
#8 - #4	Brown	E1015-22	A100087-1	A100092-8
#8 - #4	Orange	E1015-4	A100087-1	A100092-4
#8 - #4	Yellow	E1015-2	A100087-1	A100092-2



E1015-2

Ordering Information - Crimp Vulcanized Female Plugs:

Cable Size	Color	Complete Cat. #	Contact Only Cat. #	Insulator Only Cat. #
#8 - #4	Black	E1015-50	A100088-1	A100093-1
#8 - #4	Red	E1015-52	A100088-1	A100093-3
#8 - #4	Green	E1015-54	A100088-1	A100093-5
#8 - #4	White	E1015-55	A100088-1	A100093-6
#8 - #4	Blue	E1015-47	A100088-1	A100093-14
#8 - #4	Brown	E1015-44	A100088-1	A100093-15
#8 - #4	Orange	E1015-53	A100088-1	A100093-4
#8 - #4	Yellow	E1015-51	A100088-1	A100093-2



E1015-55

To order single packaged products, add a "K" suffix to the complete catalog number.

Dimensions:

