

Tender Text



Product photo could vary from the actual product

Product No.: [13BG0026](#)

150S500-26

Multi-stage submersible pump for raw water supply, groundwater lowering and pressure boosting. The pump is suitable for pumping clean, thin, non-aggressive liquids without solid particles or fibers.

The pump is made entirely of Stainless steel DIN W.-Nr. EN 1.4301 and suitable for horizontal and vertical installation.

The pump is fitted with a built-in non-return valve.

Liquid:

Pumped liquid: Water
Maximum liquid temperature: 104 °F
Liquid temperature during operation: 68 °F
Density: 62.29 lb/ft³

Technical:

Speed for pump data: 3450 rpm
Rated flow: 159 US gpm
Rated head: 928.5 ft
Curve tolerance: ISO9906:2012 3B

Materials:

Pump: Stainless steel
EN 1.4301
AISI 304
Impeller: Stainless steel
EN 1.4301
AISI 304

Installation:

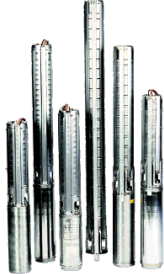
Pump outlet: 3"NPT
Motor diameter: 8 inch

Electrical data:

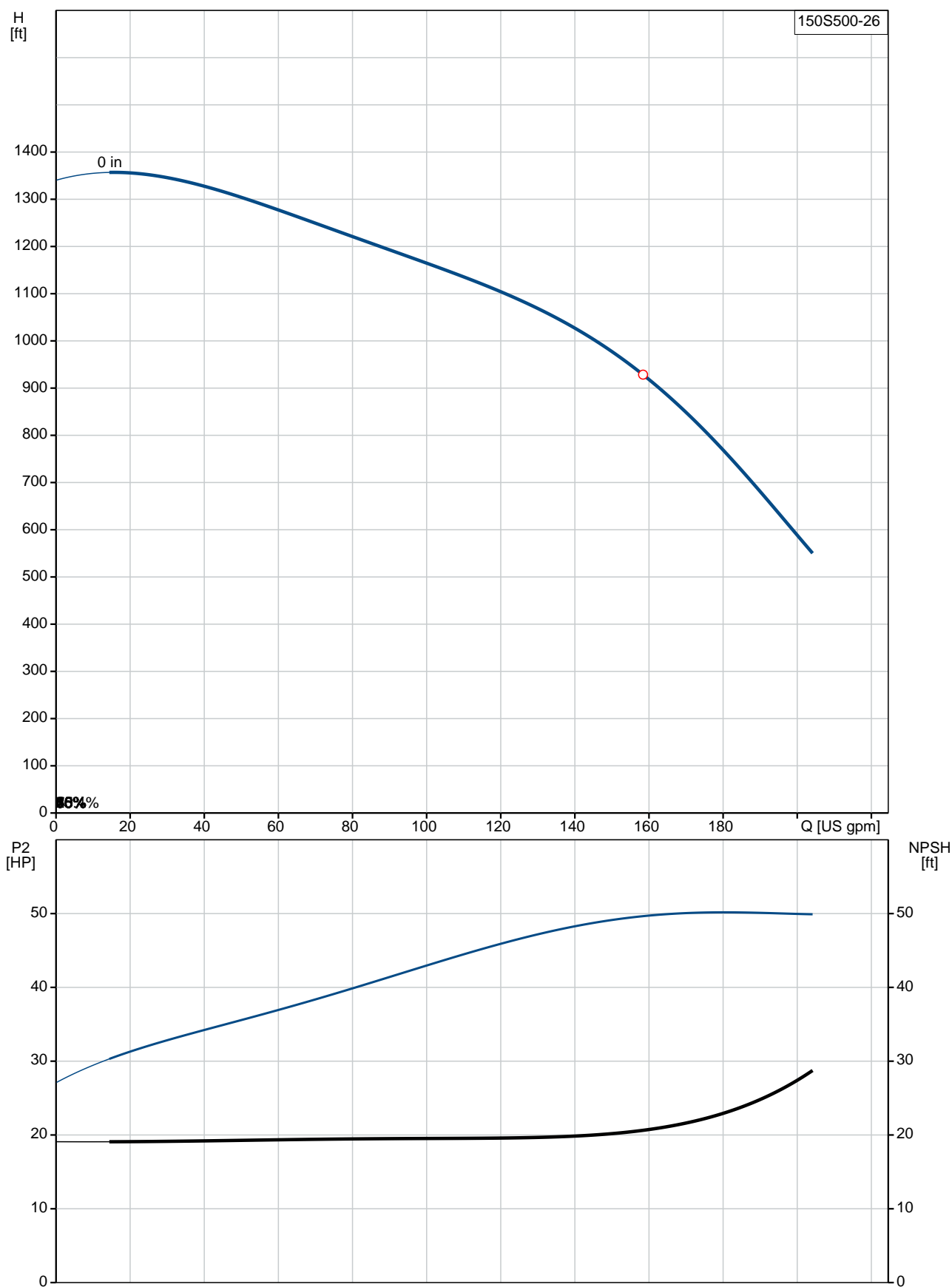
Rated power - P2: 50 HP
Power (P2) required by pump: 50 HP
Start. method: direct-on-line

Others:

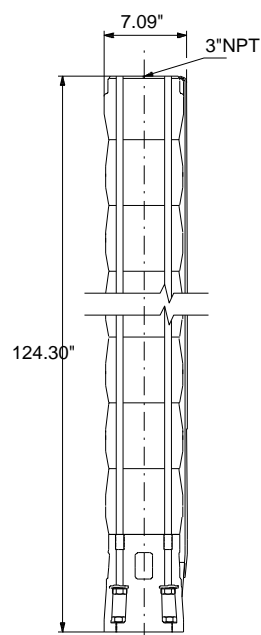
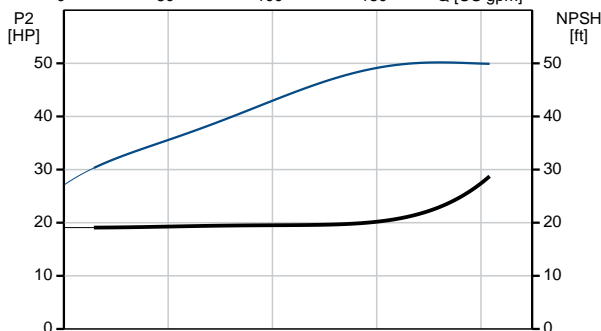
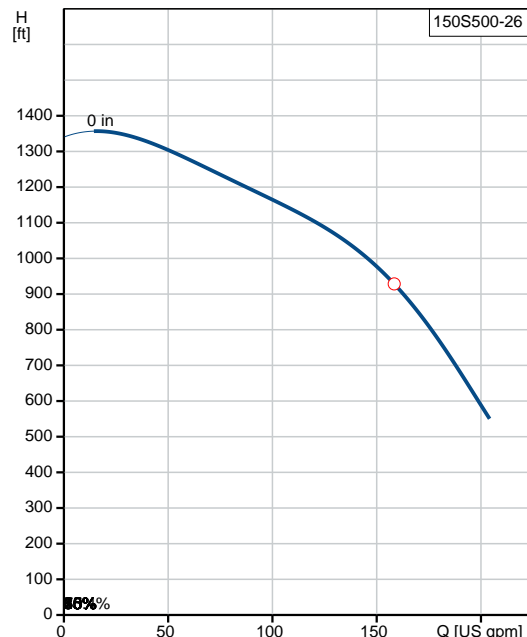
ErP status: EuP Standalone/Prod.
Net weight: 129 lb
Gross weight: 272 lb
Shipping volume: 16.8 ft³

Position	Count	Description
	1	<p>150S500-26</p>  <p>Product photo could vary from the actual product</p> <p>Product No.: 13BG0026 Multi-stage submersible pump for raw water supply, groundwater lowering and pressure boosting. The pump is suitable for pumping clean, thin, non-aggressive liquids without solid particles or fibers.</p> <p>The pump is made entirely of Stainless steel DIN W.-Nr. EN 1.4301 and suitable for horizontal and vertical installation. The pump is fitted with a built-in non-return valve.</p> <p>Liquid: Pumped liquid: Water Maximum liquid temperature: 104 °F Liquid temperature during operation: 68 °F Density: 62.29 lb/ft³</p> <p>Technical: Speed for pump data: 3450 rpm Rated flow: 159 US gpm Rated head: 928.5 ft Curve tolerance: ISO9906:2012 3B</p> <p>Materials: Pump: Stainless steel EN 1.4301 AISI 304 Impeller: Stainless steel EN 1.4301 AISI 304</p> <p>Installation: Pump outlet: 3"NPT Motor diameter: 8 inch</p> <p>Electrical data: Rated power - P2: 50 HP Power (P2) required by pump: 50 HP Start. method: direct-on-line</p> <p>Others: ErP status: EuP Standalone/Prod. Net weight: 129 lb Gross weight: 272 lb Shipping volume: 16.8 ft³</p>

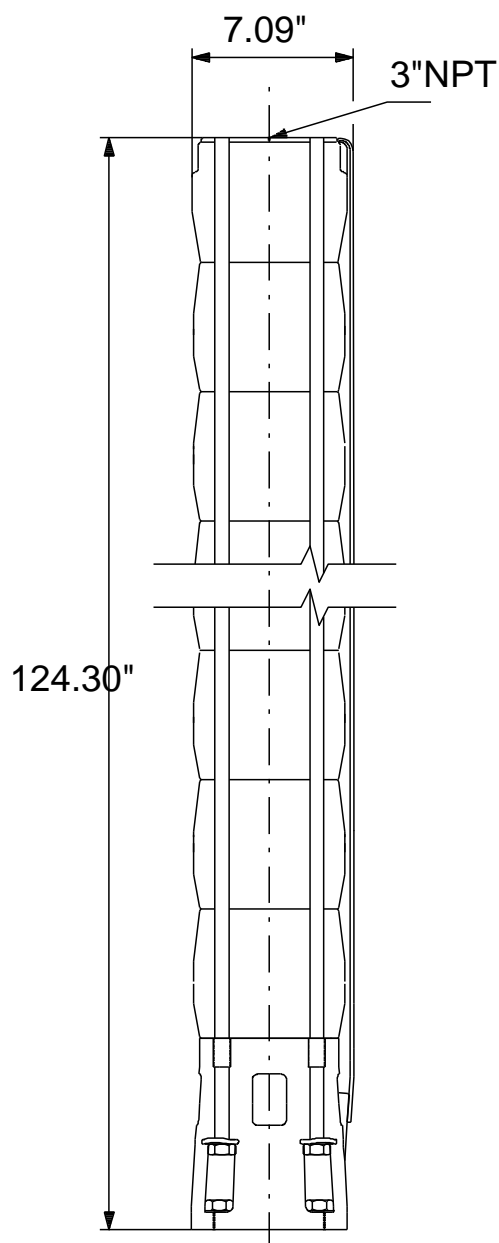
13BG0026 150S500-26 60 Hz



Description	Value
General information:	
Product name:	150S500-26
Product No.:	13BG0026
EAN:	5700391433405
Technical:	
Speed for pump data:	3450 rpm
Rated flow:	159 US gpm
Rated head:	928.5 ft
Stages:	26
Impeller reduc.:	NONE
Curve tolerance:	ISO9906:2012 3B
Model:	B
Valve:	YES
Materials:	
Pump:	Stainless steel
	EN 1.4301
	AISI 304
Impeller:	Stainless steel
	EN 1.4301
	AISI 304
Installation:	
Pump outlet:	3"NPT
Motor diameter:	8 inch
Liquid:	
Pumped liquid:	Water
Maximum liquid temperature:	104 °F
Liquid temperature during operation:	68 °F
Density:	62.29 lb/ft³
Electrical data:	
Applic. motor:	GRUNDFOS
Rated power - P2:	50 HP
Power (P2) required by pump:	50 HP
Start. method:	direct-on-line
Others:	
ErP status:	EuP Standalone/Prod.
Net weight:	129 lb
Gross weight:	272 lb
Shipping volume:	16.8 ft³
Sales region:	Namreg



13BG0026 150S500-26 60 Hz



Note! All units are in [mm] unless otherwise stated.
Disclaimer: This simplified dimensional drawing does not show all details.



Company name:

Created by:

Phone:

Date:

2/22/2018

Order Data:

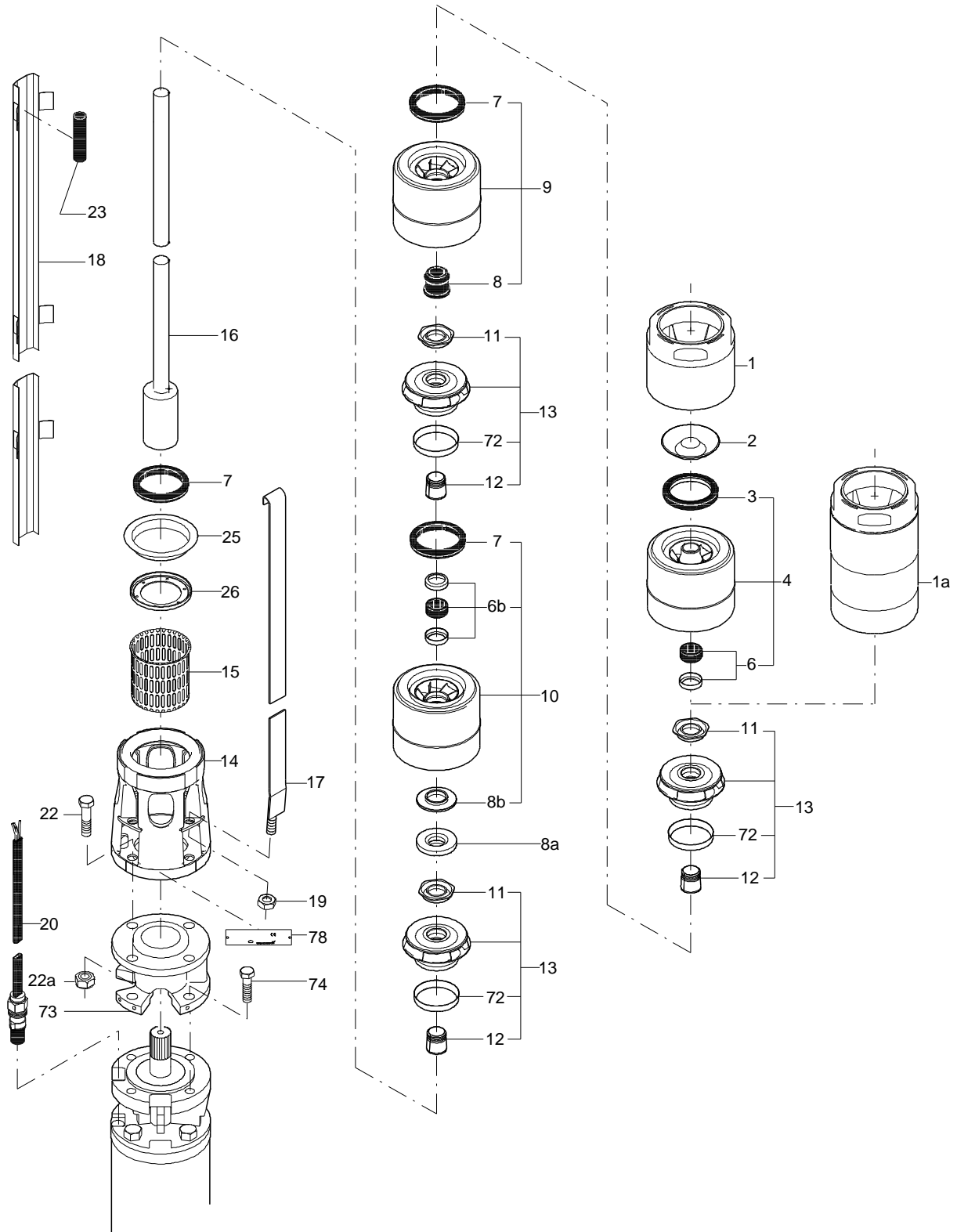
Product name: 150S500-26

Amount: 1

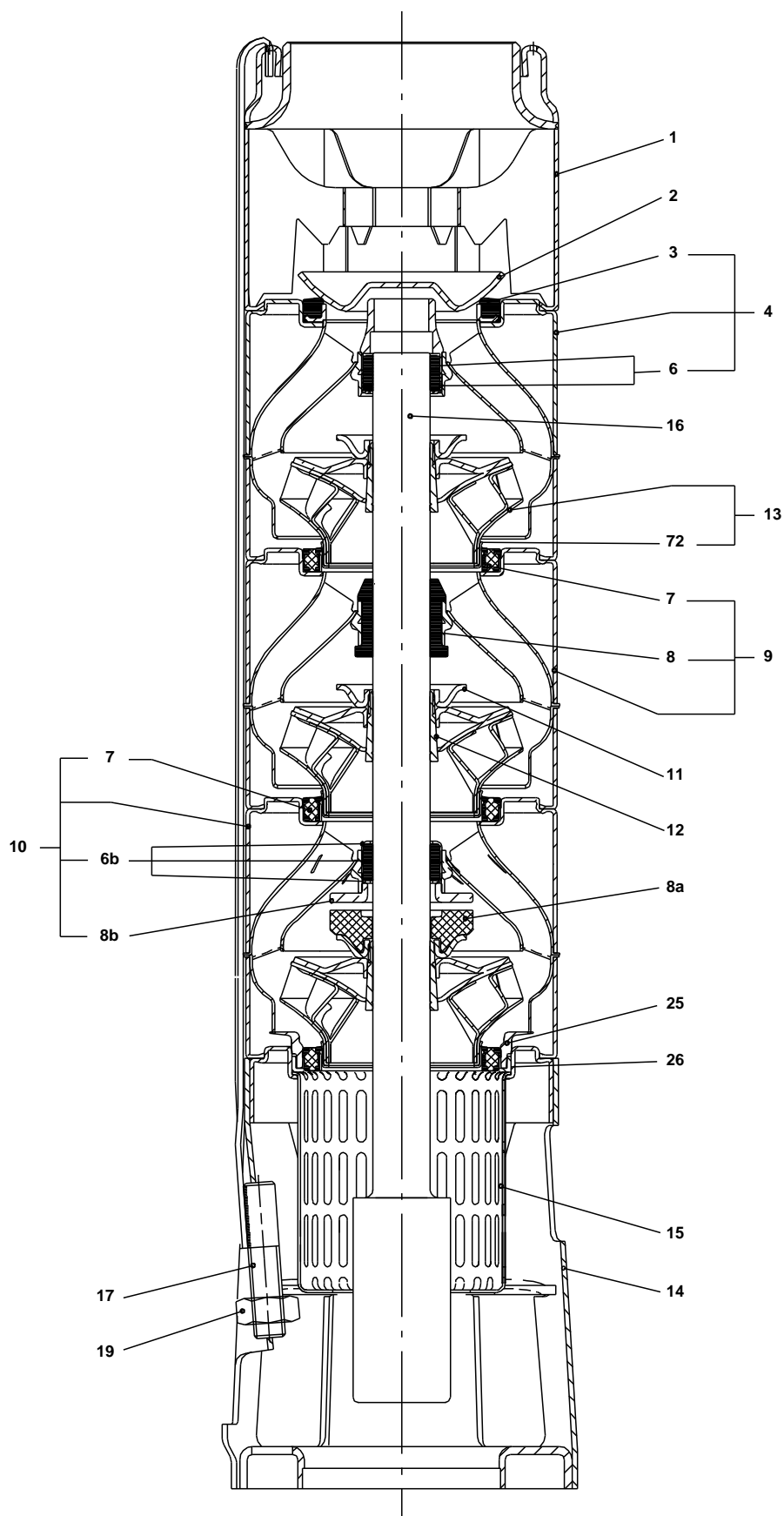
Product No.: 13BG0026

Total: Price on request

Exploded view (TM012259 0503)



Sectional drawing (TM012260 0503)



TM012260

Parts list 150S500-26, Prod number 13BG0026

Valid from 1.3.2016 (1610)

Position	Description	Annotation	Classification data	Part No.	Count	Unit
1a	Discharge chamber				1	pcs
7	Seal ring				1	pcs
8a	Washer				1	pcs
- 9	Chamber cpl.				24	pcs
	Chamber				1	
7	Seal ring				1	
8	Bearing				1	
- 10	Chamber cpl.				1	pcs
	Chamber				1	
6b	Bearing				1	
6b	Cup				2	
7	Seal ring				1	
8b	Stop ring				1	
- 13	Impeller cpl.				1	pcs
11	Split cone nut				1	
12	Split cone				1	
72	Wear ring				1	
14	Suction interconnector				1	pcs
15	Strainer				1	pcs
- 16	Shaft cpl.				1	pcs
-	Coupling cpl.				1	
	Washer					
	Coupling					
32	O-ring					
- 18	Cable guard cpl.				1	pcs
	Cable guard				1	
	Holder for cable guard				8	
19	Nut				4	pcs
19	Nut				4	pcs
22	Hex head screw				4	pcs
23	Rubber guard				1	pcs
- 26	Strap cpl.				4	pcs
	Threaded bush				1	
68	Retainer for seal ring				1	pcs
73	Connecting piece				1	pcs
74	Staybolt				4	pcs
75	Wear ring				1	pcs
76	Nameplate				2	pcs
84a	Supporting plate				1	pcs