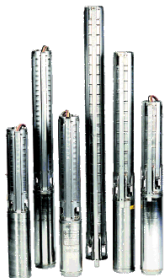


## Tender Text



Product photo could vary from the actual product

Product No.: [15B700C1](#)

### 230S20-1-B

Multi-stage submersible pump for raw water supply, groundwater lowering and pressure boosting. The pump is suitable for pumping clean, thin, non-aggressive liquids without solid particles or fibers.

The pump is made entirely of Stainless steel

DIN W.-Nr. EN 1.4301 and suitable for horizontal and vertical installation.

The pump is fitted with a built-in non-return valve.

### Liquid:

Pumped liquid: Water  
Maximum liquid temperature: 104 °F  
Liquid temperature during operation: 68 °F  
Density: 62.29 lb/ft<sup>3</sup>

### Technical:

Speed for pump data: 3450 rpm  
Rated flow: 242 US gpm  
Rated head: 22.97 ft  
Curve tolerance: ISO9906:2012 3B

### Materials:

Pump: Stainless steel  
EN 1.4301  
AISI 304  
Impeller: Stainless steel  
EN 1.4301  
AISI 304

### Installation:

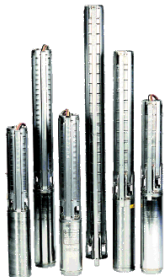
Pump outlet: 3"NPT  
Motor diameter: 4 inch

### Electrical data:

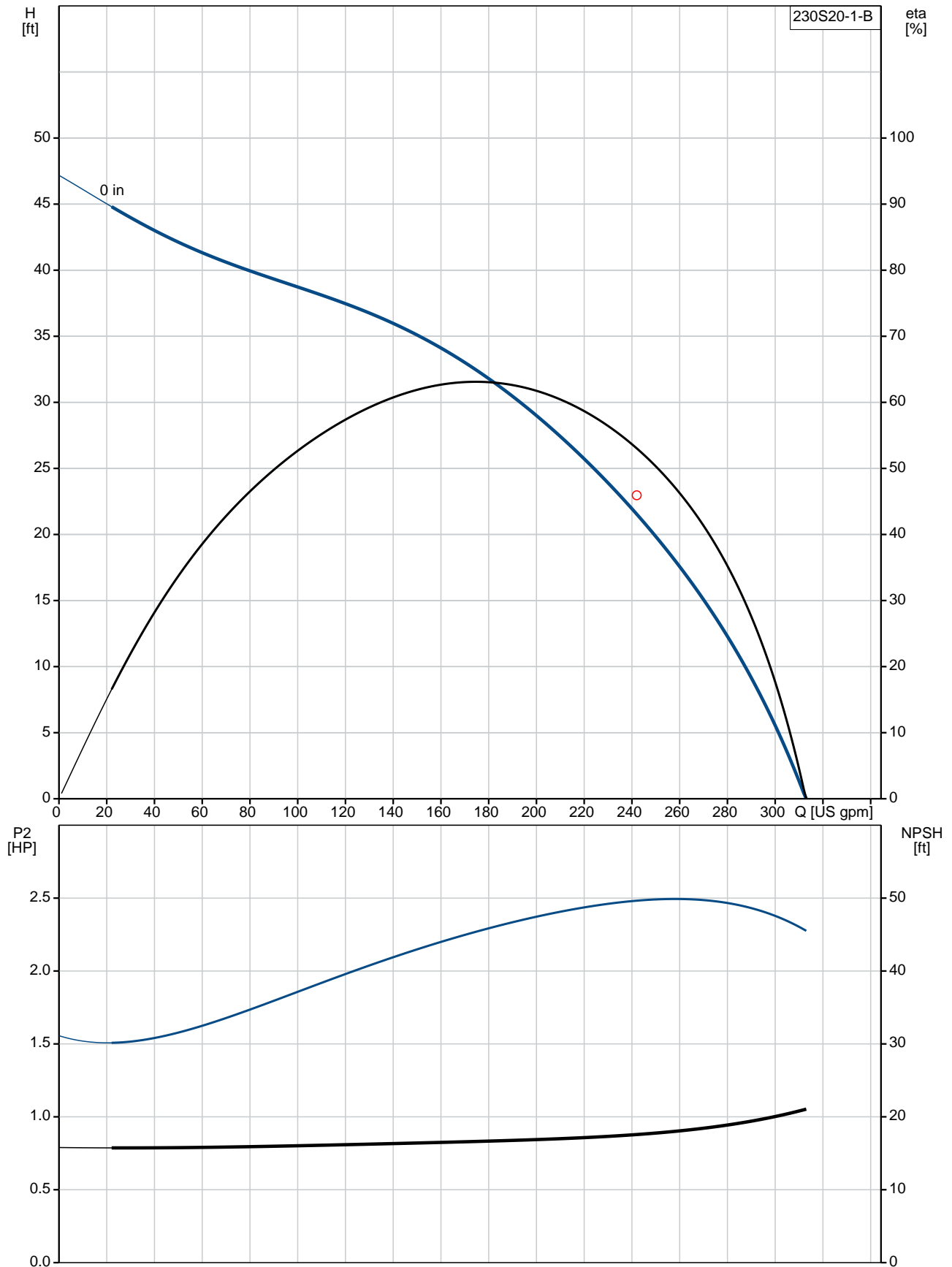
Rated power - P2: 2 HP  
Power (P2) required by pump: 2 HP  
Start. method: direct-on-line

### Others:

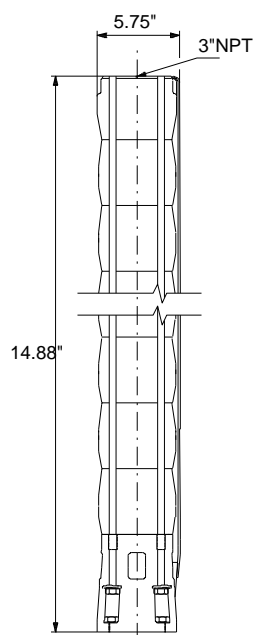
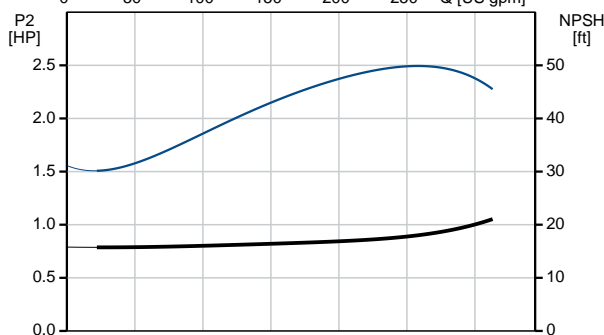
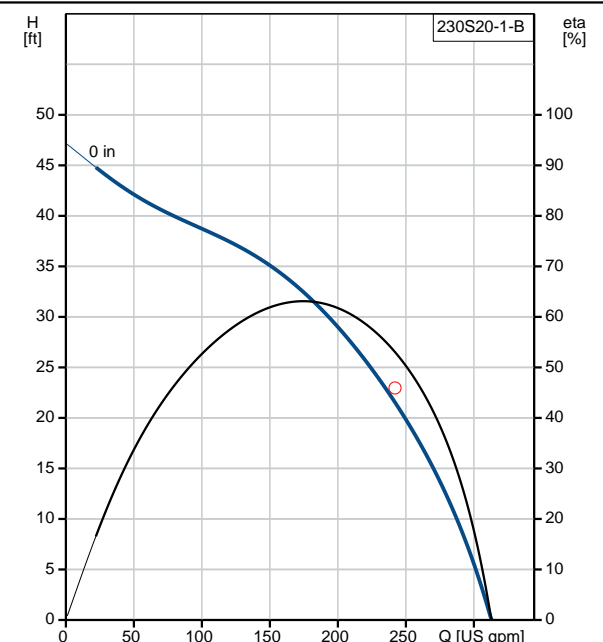
ErP status: EuP Standalone/Prod.  
Net weight: 14.6 lb  
Gross weight: 20.3 lb  
Shipping volume: 1.13 ft<sup>3</sup>

Position	Count	Description
	1	<p><b>230S20-1-B</b></p>  <p>Product photo could vary from the actual product</p> <p>Product No.: <a href="#">15B700C1</a></p> <p>Multi-stage submersible pump for raw water supply, groundwater lowering and pressure boosting. The pump is suitable for pumping clean, thin, non-aggressive liquids without solid particles or fibers.</p> <p>The pump is made entirely of Stainless steel DIN W.-Nr. EN 1.4301 and suitable for horizontal and vertical installation. The pump is fitted with a built-in non-return valve.</p> <p><b>Liquid:</b></p> <p>Pumped liquid: Water</p> <p>Maximum liquid temperature: 104 °F</p> <p>Liquid temperature during operation: 68 °F</p> <p>Density: 62.29 lb/ft³</p> <p><b>Technical:</b></p> <p>Speed for pump data: 3450 rpm</p> <p>Rated flow: 242 US gpm</p> <p>Rated head: 22.97 ft</p> <p>Curve tolerance: ISO9906:2012 3B</p> <p><b>Materials:</b></p> <p>Pump: Stainless steel EN 1.4301 AISI 304</p> <p>Impeller: Stainless steel EN 1.4301 AISI 304</p> <p><b>Installation:</b></p> <p>Pump outlet: 3"NPT</p> <p>Motor diameter: 4 inch</p> <p><b>Electrical data:</b></p> <p>Rated power - P2: 2 HP</p> <p>Power (P2) required by pump: 2 HP</p> <p>Start. method: direct-on-line</p> <p><b>Others:</b></p> <p>ErP status: EuP Standalone/Prod.</p> <p>Net weight: 14.6 lb</p> <p>Gross weight: 20.3 lb</p> <p>Shipping volume: 1.13 ft³</p>

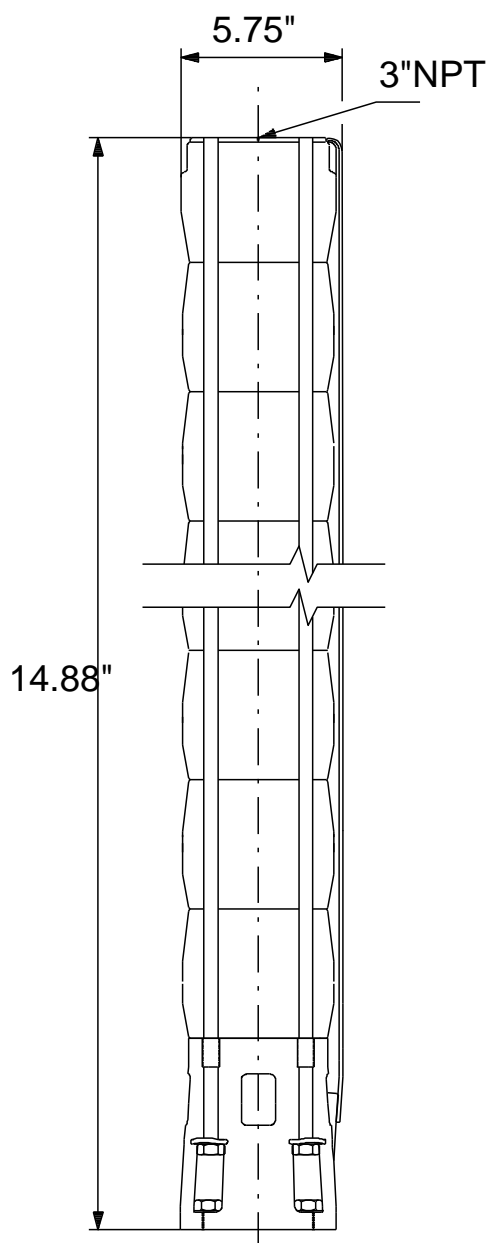
## 15B700C1 230S20-1-B 60 Hz



Description	Value
<b>General information:</b>	
Product name:	230S20-1-B
Product No.:	15B700C1
EAN:	5700393423350
<b>Technical:</b>	
Speed for pump data:	3450 rpm
Rated flow:	242 US gpm
Rated head:	22.97 ft
Stages:	1
Impeller reduc.:	B
Curve tolerance:	ISO9906:2012 3B
Model:	B
Valve:	YES
<b>Materials:</b>	
Pump:	Stainless steel
	EN 1.4301
	AISI 304
Impeller:	Stainless steel
	EN 1.4301
	AISI 304
<b>Installation:</b>	
Pump outlet:	3"NPT
Motor diameter:	4 inch
<b>Liquid:</b>	
Pumped liquid:	Water
Maximum liquid temperature:	104 °F
Liquid temperature during operation:	68 °F
Density:	62.29 lb/ft³
<b>Electrical data:</b>	
Applic. motor:	GRUNDFOS
Rated power - P2:	2 HP
Power (P2) required by pump:	2 HP
Start. method:	direct-on-line
<b>Others:</b>	
ErP status:	EuP Standalone/Prod.
Net weight:	14.6 lb
Gross weight:	20.3 lb
Shipping volume:	1.13 ft³
Sales region:	Namreg



## 15B700C1 230S20-1-B 60 Hz



Note! All units are in [mm] unless otherwise stated.  
Disclaimer: This simplified dimensional drawing does not show all details.



Company name:

Created by:

Phone:

Date:

2/22/2018

---

**Order Data:**

Product name: 230S20-1-B

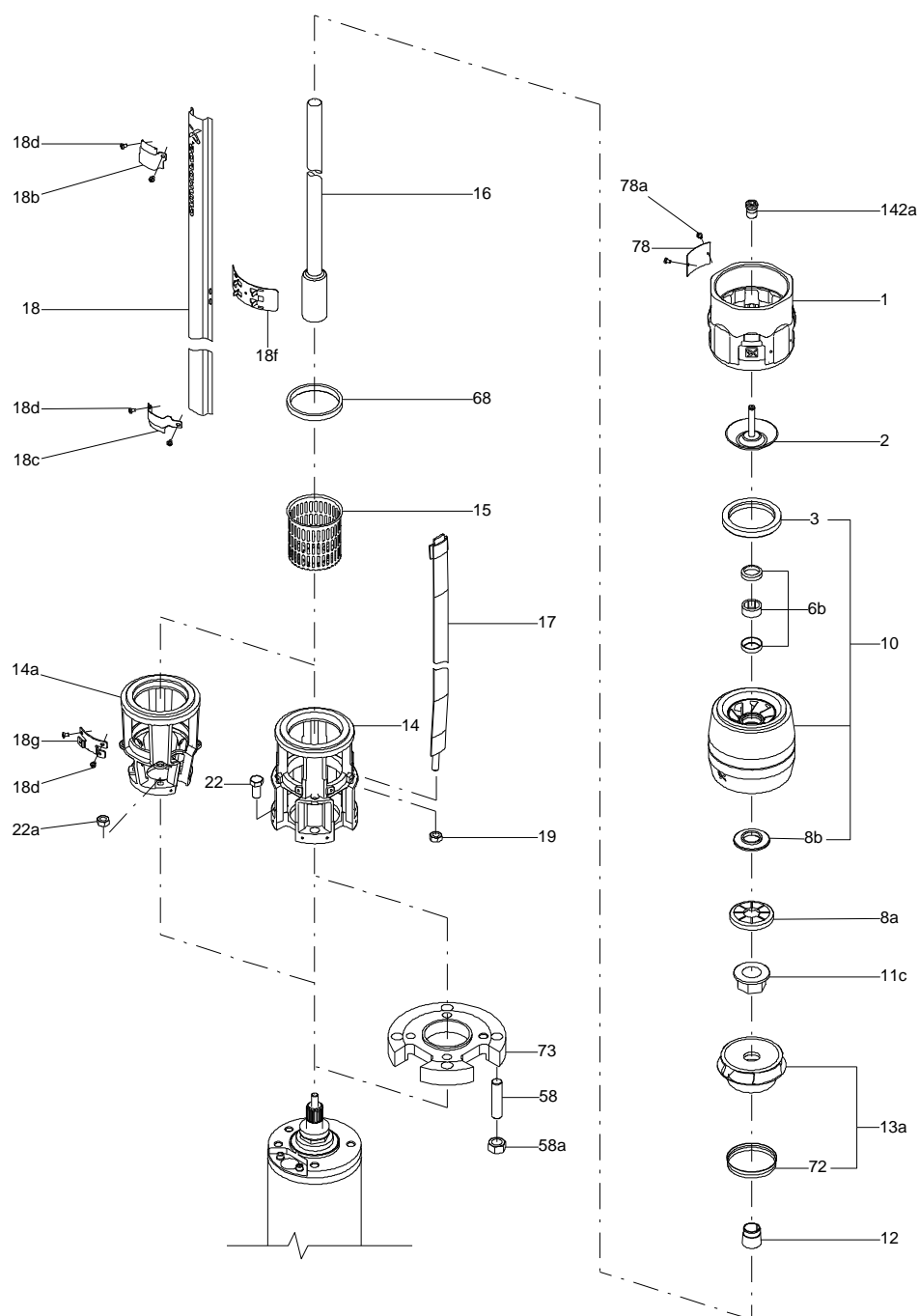
Amount: 1

Product No.: 15B700C1

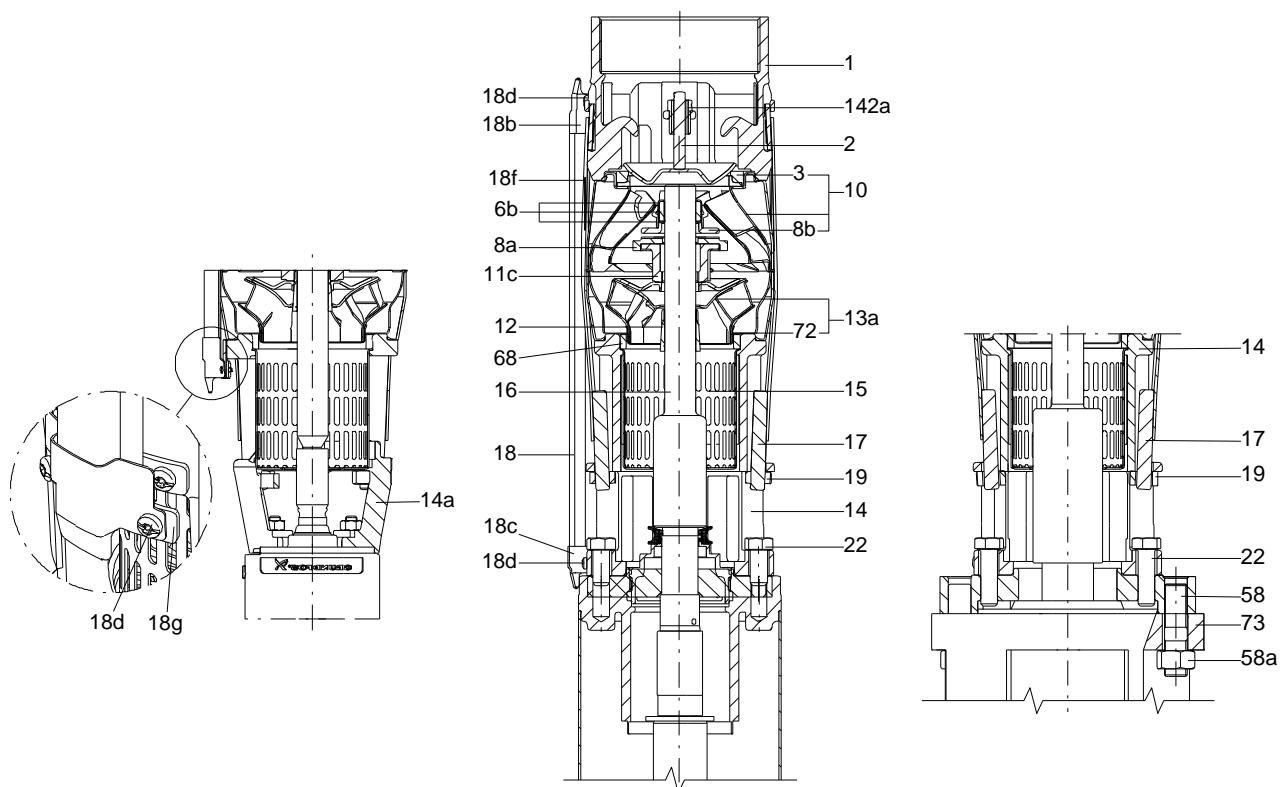
Total: Price on request

---

## Exploded view ( TM054013 for SP(LDC) 1stage 1 Red. impe(1A))



## Sectional drawing ( TM054152 for SP(LDC) 1A stage )



160x240

**Parts list 230S20-1-B, Prod number 15B700C1**

**Valid from 1.3.2016 (1610)**

Position	Description	Annotation	Classification data	Part No.	Count	Unit
-	Shaft,cableg,strap				1	pcs
- 16	Shaft cpl.				1	
	Coupling					
- 17	Strap cpl.				4	
	Threaded bush					
	Lug					
18	Cable guard				1	
1	Valve casing				1	pcs
2	Valve				1	pcs
- 8	Bearing cpl.				1	pcs
	Pipe				1	
8a	Washer				1	pcs
- 10	Chamber cpl.				1	pcs
	Chamber				1	
3	Valve seat				1	
6b	Bearing				1	
6b	Cup				1	
8b	Stop ring				1	
- 13	Impeller cpl.				1	pcs
11c	Nut				1	
12	Split cone				1	
72	Wear ring				1	
14	Suction interconnector				1	pcs
15	Strainer				1	pcs
18b	Clamp				2	pcs
18d	Hex socket head cap screw				2	pcs
18d	Hex socket head cap screw				4	pcs
18g	Clip				1	pcs
19	Nut		Thread: M10		4	pcs
68	Seal ring				1	pcs
78	Nameplate				2	pcs
78a	Rivet				2	pcs