

## Tender Text



Product photo could vary from the actual product

Product No.: [15B700D3](#)

### 230S75-3-BB

Multi-stage submersible pump for raw water supply, groundwater lowering and pressure boosting. The pump is suitable for pumping clean, thin, non-aggressive liquids without solid particles or fibers.

The pump is made entirely of Stainless steel DIN W.-Nr. EN 1.4301 and suitable for horizontal and vertical installation.

The pump is fitted with a built-in non-return valve.

### Liquid:

Pumped liquid:	Water
Maximum liquid temperature:	104 °F
Liquid temperature during operation:	68 °F
Density:	62.29 lb/ft <sup>3</sup>

### Technical:

Speed for pump data:	3450 rpm
Actual calculated flow:	243 US gpm
Resulting head of the pump:	82.83 ft
Curve tolerance:	ISO9906:2012 3B

### Materials:

Pump:	Stainless steel EN 1.4301 AISI 304
Impeller:	Stainless steel EN 1.4301 AISI 304

### Installation:

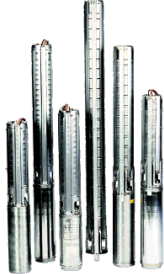
Pump outlet:	3"NPT
Motor diameter:	4 inch

### Electrical data:

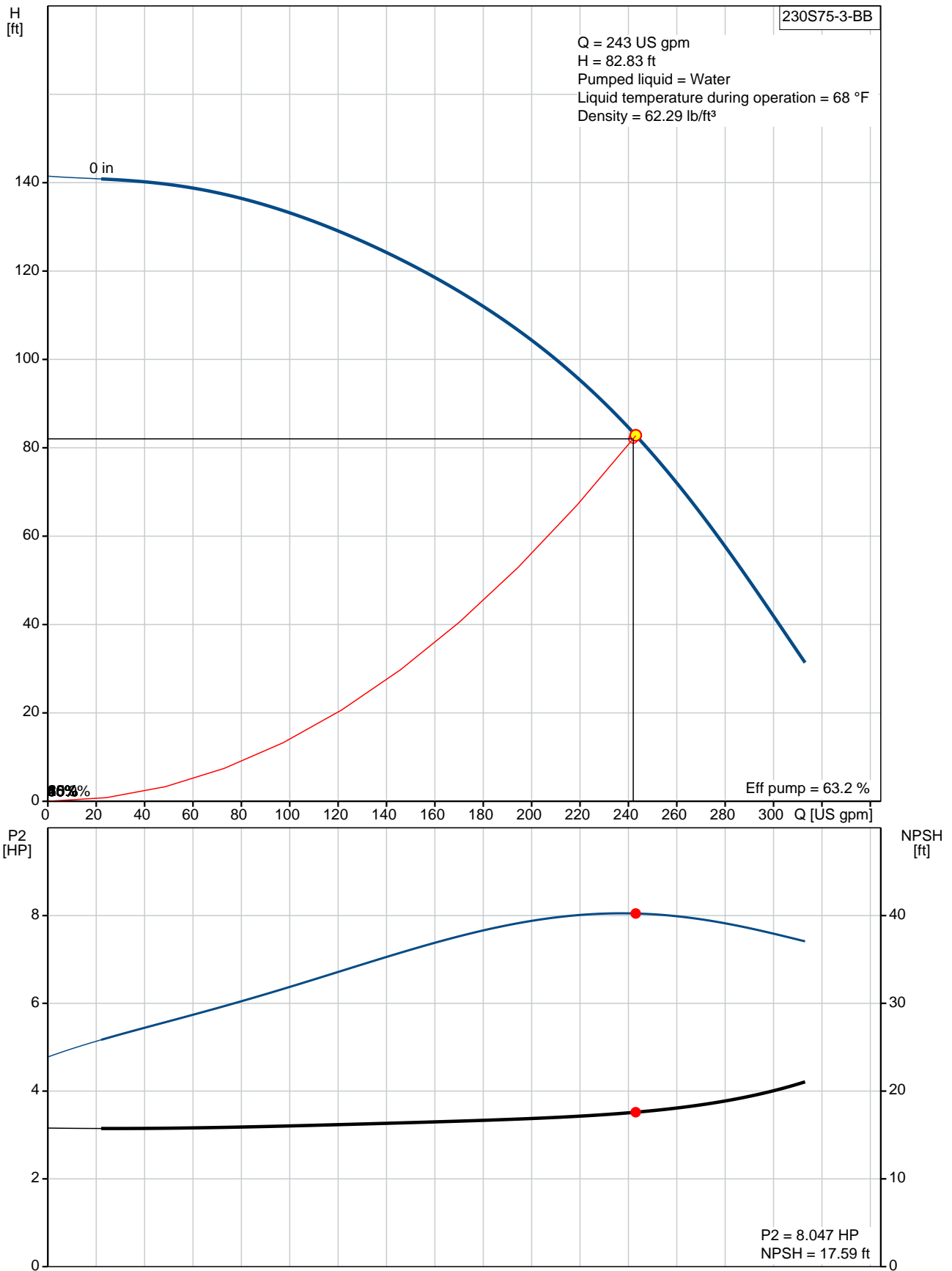
Rated power - P2:	7.5 HP
Power (P2) required by pump:	7.5 HP
Start. method:	direct-on-line

### Others:

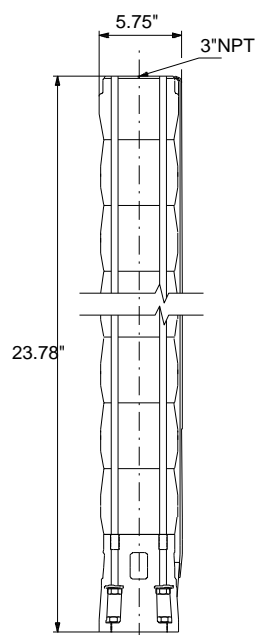
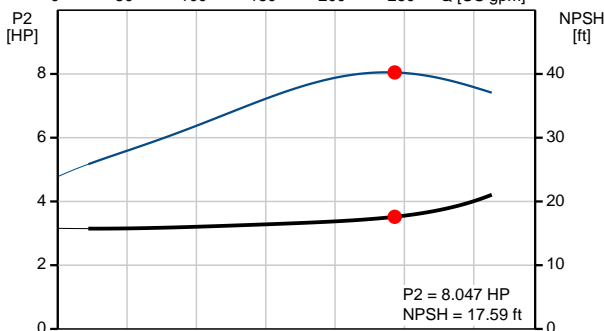
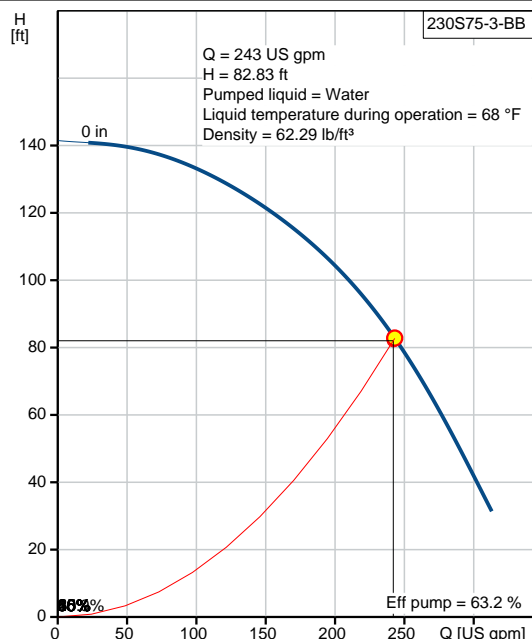
ErP status:	EuP Standalone/Prod.
Net weight:	25.1 lb
Gross weight:	30.9 lb
Shipping volume:	1.13 ft <sup>3</sup>

Position	Count	Description
	1	<p><b>230S75-3-BB</b></p>  <p>Product photo could vary from the actual product</p> <p>Product No.: <a href="#">15B700D3</a></p> <p>Multi-stage submersible pump for raw water supply, groundwater lowering and pressure boosting. The pump is suitable for pumping clean, thin, non-aggressive liquids without solid particles or fibers.</p> <p>The pump is made entirely of Stainless steel DIN W.-Nr. EN 1.4301 and suitable for horizontal and vertical installation. The pump is fitted with a built-in non-return valve.</p> <p><b>Liquid:</b></p> <p>Pumped liquid: Water</p> <p>Maximum liquid temperature: 104 °F</p> <p>Liquid temperature during operation: 68 °F</p> <p>Density: 62.29 lb/ft³</p> <p><b>Technical:</b></p> <p>Speed for pump data: 3450 rpm</p> <p>Actual calculated flow: 243 US gpm</p> <p>Resulting head of the pump: 82.83 ft</p> <p>Curve tolerance: ISO9906:2012 3B</p> <p><b>Materials:</b></p> <p>Pump: Stainless steel EN 1.4301 AISI 304</p> <p>Impeller: Stainless steel EN 1.4301 AISI 304</p> <p><b>Installation:</b></p> <p>Pump outlet: 3"NPT</p> <p>Motor diameter: 4 inch</p> <p><b>Electrical data:</b></p> <p>Rated power - P2: 7.5 HP</p> <p>Power (P2) required by pump: 7.5 HP</p> <p>Start. method: direct-on-line</p> <p><b>Others:</b></p> <p>ErP status: EuP Standalone/Prod.</p> <p>Net weight: 25.1 lb</p> <p>Gross weight: 30.9 lb</p> <p>Shipping volume: 1.13 ft³</p>

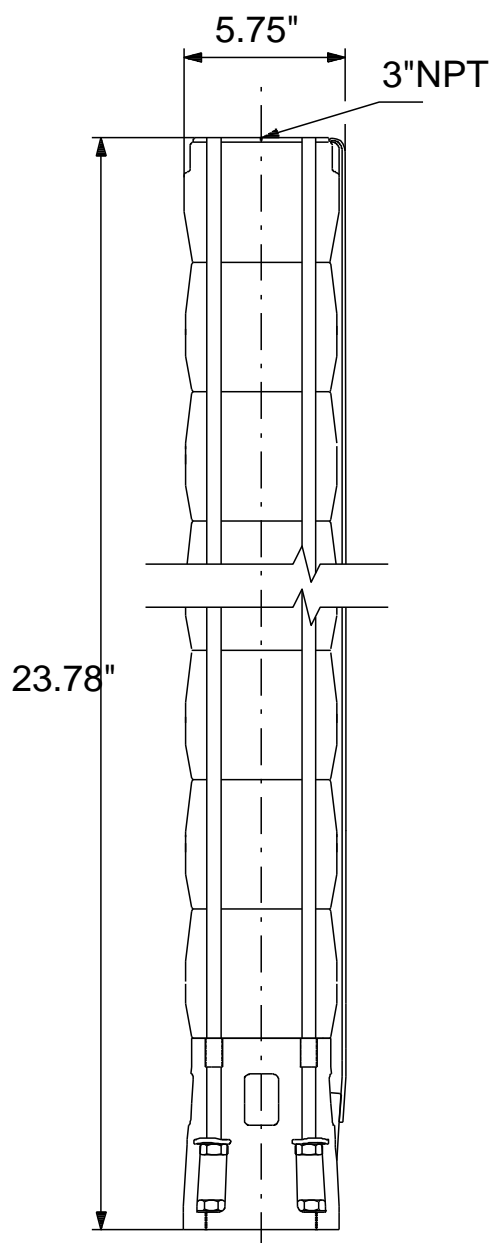
## 15B700D3 230S75-3-BB 60 Hz



Description	Value
<b>General information:</b>	
Product name:	230S75-3-BB
Product No.:	15B700D3
EAN:	5700393423398
<b>Technical:</b>	
Speed for pump data:	3450 rpm
Actual calculated flow:	243 US gpm
Resulting head of the pump:	82.83 ft
Stages:	3
Impeller reduc.:	BB
Curve tolerance:	ISO9906:2012 3B
Model:	B
Valve:	YES
<b>Materials:</b>	
Pump:	Stainless steel
	EN 1.4301
	AISI 304
Impeller:	Stainless steel
	EN 1.4301
	AISI 304
<b>Installation:</b>	
Pump outlet:	3"NPT
Motor diameter:	4 inch
<b>Liquid:</b>	
Pumped liquid:	Water
Maximum liquid temperature:	104 °F
Liquid temperature during operation:	68 °F
Density:	62.29 lb/ft³
<b>Electrical data:</b>	
Applic. motor:	GRUNDFOS
Rated power - P2:	7.5 HP
Power (P2) required by pump:	7.5 HP
Start. method:	direct-on-line
<b>Others:</b>	
ErP status:	EuP Standalone/Prod.
Net weight:	25.1 lb
Gross weight:	30.9 lb
Shipping volume:	1.13 ft³
Sales region:	Namreg



## 15B700D3 230S75-3-BB 60 Hz



Note! All units are in [mm] unless otherwise stated.  
Disclaimer: This simplified dimensional drawing does not show all details.



Company name:

Created by:

Phone:

Date:

2/22/2018

---

**Order Data:**

Product name: 230S75-3-BB

Amount: 1

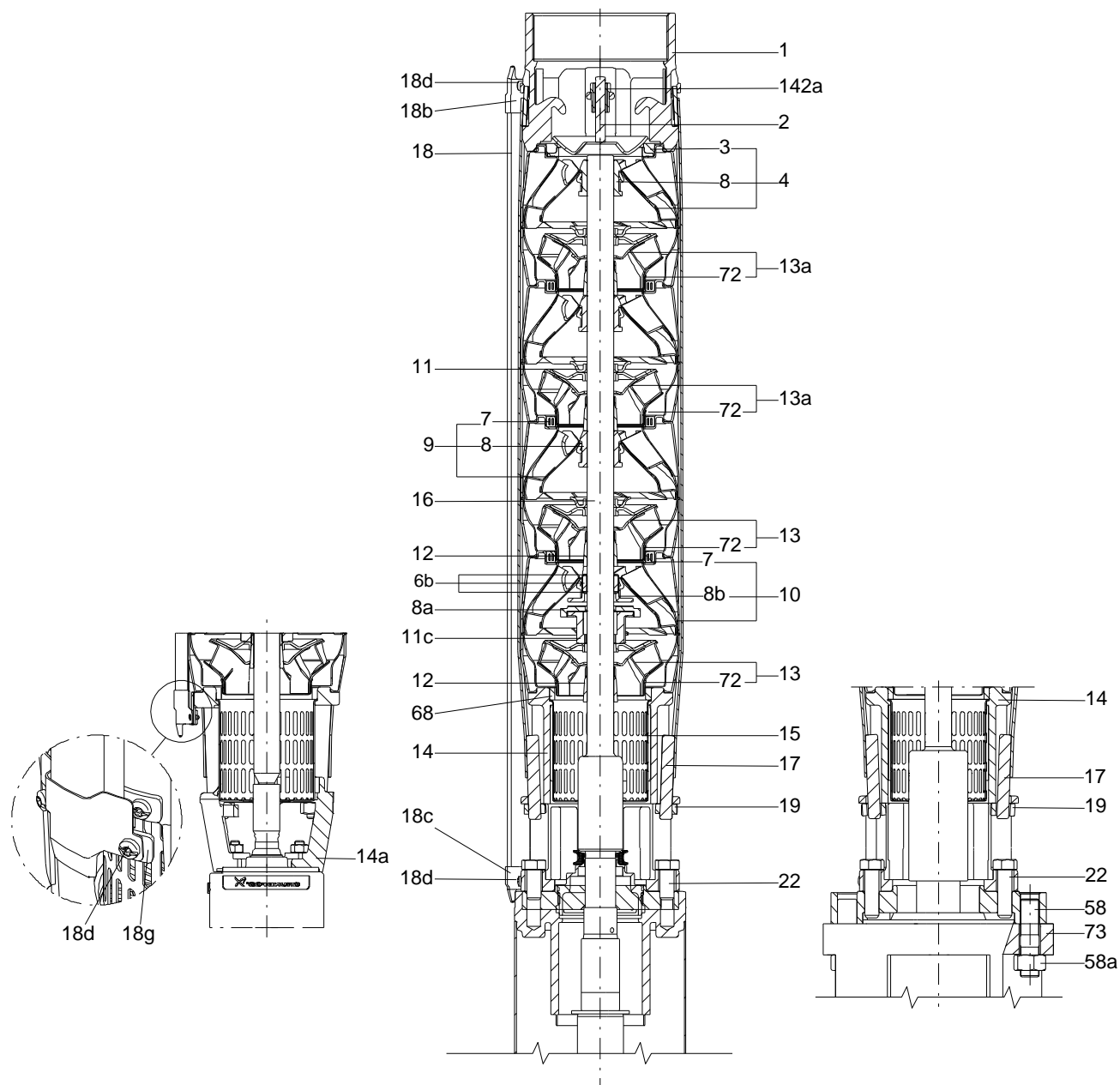
Product No.: 15B700D3

Total: Price on request

---



## Sectional drawing ( TM054155 SP(LDC) XXAA stage )





**Parts list 230S75-3-BB, Prod number 15B700D3**

**Valid from 1.3.2016 (1610)**

Position	Description	Annotation	Classification data	Part No.	Count	Unit
-	Shaft,cableg,strap				1	pcs
- 16	Shaft cpl.				1	
	Coupling					
- 17	Strap cpl.				4	
	Threaded bush					
	Lug					
18	Cable guard				1	
1	Valve casing				1	pcs
2	Valve				1	pcs
- 4	Chamber cpl.				1	pcs
	Chamber				1	
3	Valve seat				1	
8	Bearing				1	
- 8	Bearing cpl.				1	pcs
	Pipe				1	
8a	Washer				1	pcs
- 9	Chamber cpl.				1	pcs
	Chamber				1	
7	Seal ring				1	
8	Bearing				1	
- 10	Chamber cpl.				1	pcs
	Chamber				1	
6b	Bearing				1	
6b	Cup				2	
7	Seal ring				1	
8b	Stop ring				1	
- 13	Impeller cpl.				1	pcs
11c	Nut				1	
12	Split cone				1	
72	Wear ring				1	
- 13	Impeller cpl.				1	pcs
11	Split cone nut				1	
12	Split cone				1	
72	Wear ring				1	
- 13	Impeller cpl.				1	pcs
11	Split cone nut				1	
12	Split cone				1	
72	Wear ring				1	
14	Suction interconnector				1	pcs
15	Strainer				1	pcs
18b	Clamp				2	pcs
18d	Hex socket head cap screw				2	pcs
18d	Hex socket head cap screw				4	pcs
18g	Clip				1	pcs
19	Nut		Thread: M10		4	pcs
68	Seal ring				1	pcs
78	Nameplate				2	pcs
78a	Rivet				2	pcs