

Tender Text



Product photo could vary from the actual product

Product No.: [15B700E2](#)

230S50-2-AB

Multi-stage submersible pump for raw water supply, groundwater lowering and pressure boosting. The pump is suitable for pumping clean, thin, non-aggressive liquids without solid particles or fibers.

The pump is made entirely of Stainless steel DIN W.-Nr. EN 1.4301 and suitable for horizontal and vertical installation.

The pump is fitted with a built-in non-return valve.

Liquid:

Pumped liquid:	Water
Maximum liquid temperature:	104 °F
Liquid temperature during operation:	68 °F
Density:	62.29 lb/ft ³

Technical:

Speed for pump data:	3450 rpm
Actual calculated flow:	243 US gpm
Resulting head of the pump:	52.74 ft
Curve tolerance:	ISO9906:2012 3B

Materials:

Pump:	Stainless steel EN 1.4301 AISI 304
Impeller:	Stainless steel EN 1.4301 AISI 304

Installation:

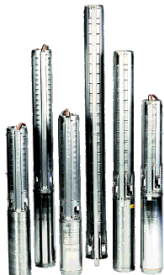
Pump outlet:	3"NPT
Motor diameter:	4 inch

Electrical data:

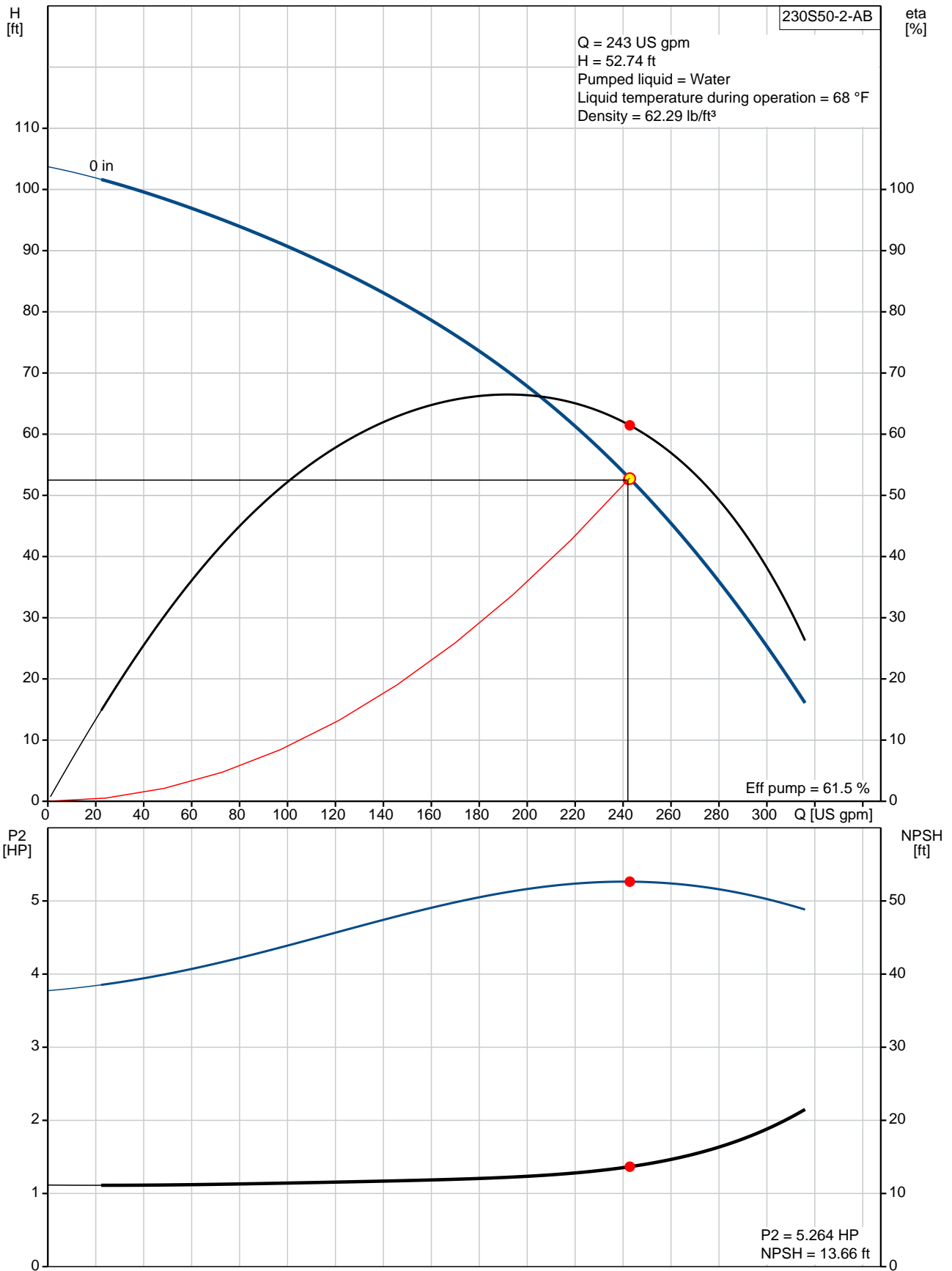
Rated power - P2:	5 HP
Power (P2) required by pump:	5 HP
Start. method:	direct-on-line

Others:

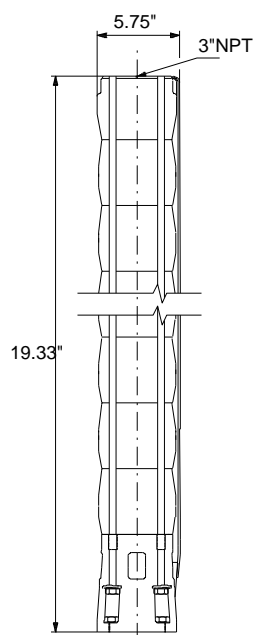
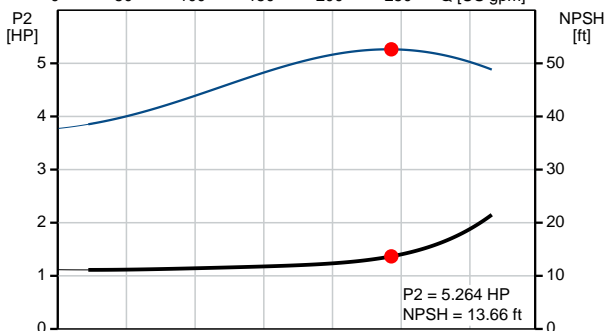
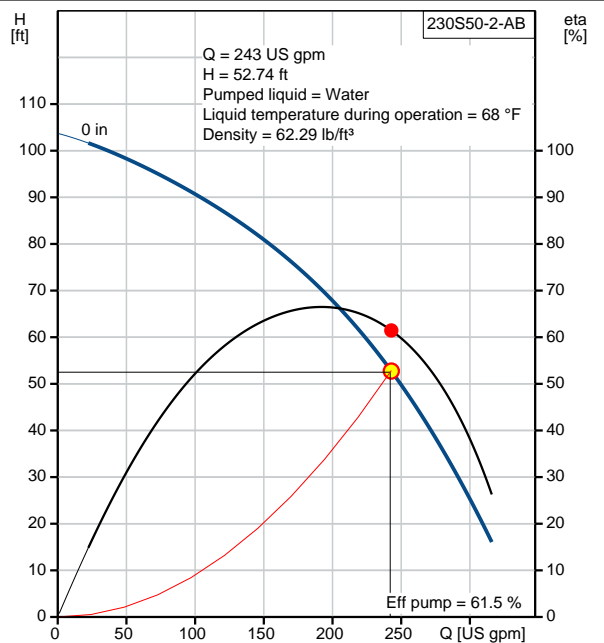
ErP status:	EuP Standalone/Prod.
Net weight:	19.8 lb
Gross weight:	25.6 lb
Shipping volume:	1.13 ft ³

Position	Count	Description
	1	<p>230S50-2-AB</p>  <p>Product photo could vary from the actual product</p> <p>Product No.: 15B700E2</p> <p>Multi-stage submersible pump for raw water supply, groundwater lowering and pressure boosting. The pump is suitable for pumping clean, thin, non-aggressive liquids without solid particles or fibers.</p> <p>The pump is made entirely of Stainless steel DIN W.-Nr. EN 1.4301 and suitable for horizontal and vertical installation. The pump is fitted with a built-in non-return valve.</p> <p>Liquid:</p> <p>Pumped liquid: Water</p> <p>Maximum liquid temperature: 104 °F</p> <p>Liquid temperature during operation: 68 °F</p> <p>Density: 62.29 lb/ft³</p> <p>Technical:</p> <p>Speed for pump data: 3450 rpm</p> <p>Actual calculated flow: 243 US gpm</p> <p>Resulting head of the pump: 52.74 ft</p> <p>Curve tolerance: ISO9906:2012 3B</p> <p>Materials:</p> <p>Pump: Stainless steel EN 1.4301 AISI 304</p> <p>Impeller: Stainless steel EN 1.4301 AISI 304</p> <p>Installation:</p> <p>Pump outlet: 3"NPT</p> <p>Motor diameter: 4 inch</p> <p>Electrical data:</p> <p>Rated power - P2: 5 HP</p> <p>Power (P2) required by pump: 5 HP</p> <p>Start. method: direct-on-line</p> <p>Others:</p> <p>ErP status: EuP Standalone/Prod.</p> <p>Net weight: 19.8 lb</p> <p>Gross weight: 25.6 lb</p> <p>Shipping volume: 1.13 ft³</p>

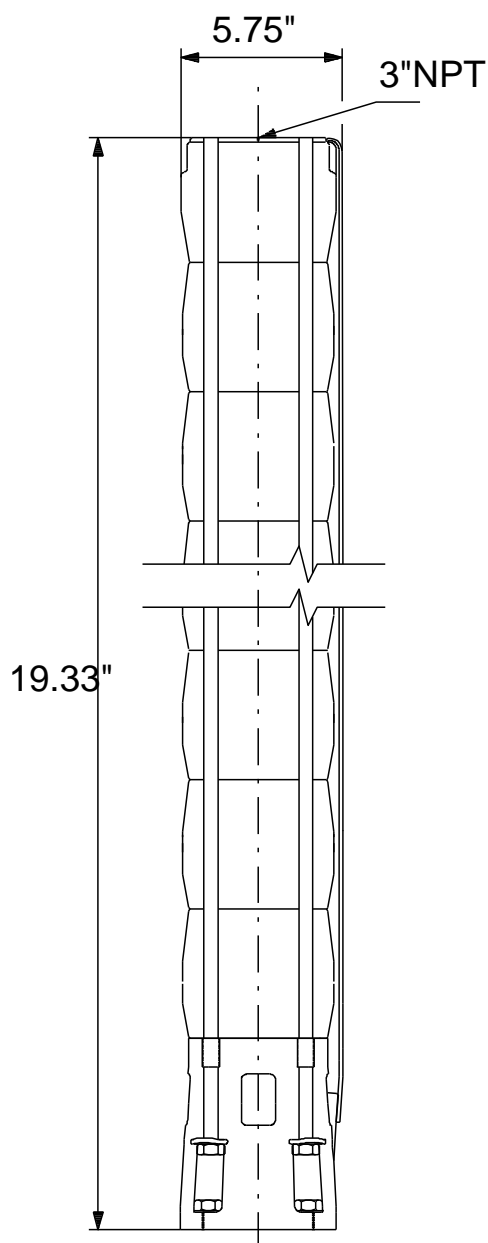
15B700E2 230S50-2-AB 60 Hz



Description	Value
General information:	
Product name:	230S50-2-AB
Product No.:	15B700E2
EAN:	5700393973947
Technical:	
Speed for pump data:	3450 rpm
Actual calculated flow:	243 US gpm
Resulting head of the pump:	52.74 ft
Stages:	2
Impeller reduc.:	AB
Curve tolerance:	ISO9906:2012 3B
Model:	B
Valve:	YES
Materials:	
Pump:	Stainless steel
	EN 1.4301
	AISI 304
Impeller:	Stainless steel
	EN 1.4301
	AISI 304
Installation:	
Pump outlet:	3"NPT
Motor diameter:	4 inch
Liquid:	
Pumped liquid:	Water
Maximum liquid temperature:	104 °F
Liquid temperature during operation:	68 °F
Density:	62.29 lb/ft³
Electrical data:	
Applic. motor:	GRUNDFOS
Rated power - P2:	5 HP
Power (P2) required by pump:	5 HP
Start. method:	direct-on-line
Others:	
ErP status:	EuP Standalone/Prod.
Net weight:	19.8 lb
Gross weight:	25.6 lb
Shipping volume:	1.13 ft³
Sales region:	Namreg



15B700E2 230S50-2-AB 60 Hz



Note! All units are in [mm] unless otherwise stated.
Disclaimer: This simplified dimensional drawing does not show all details.



Company name:

Created by:

Phone:

Date:

2/22/2018

Order Data:

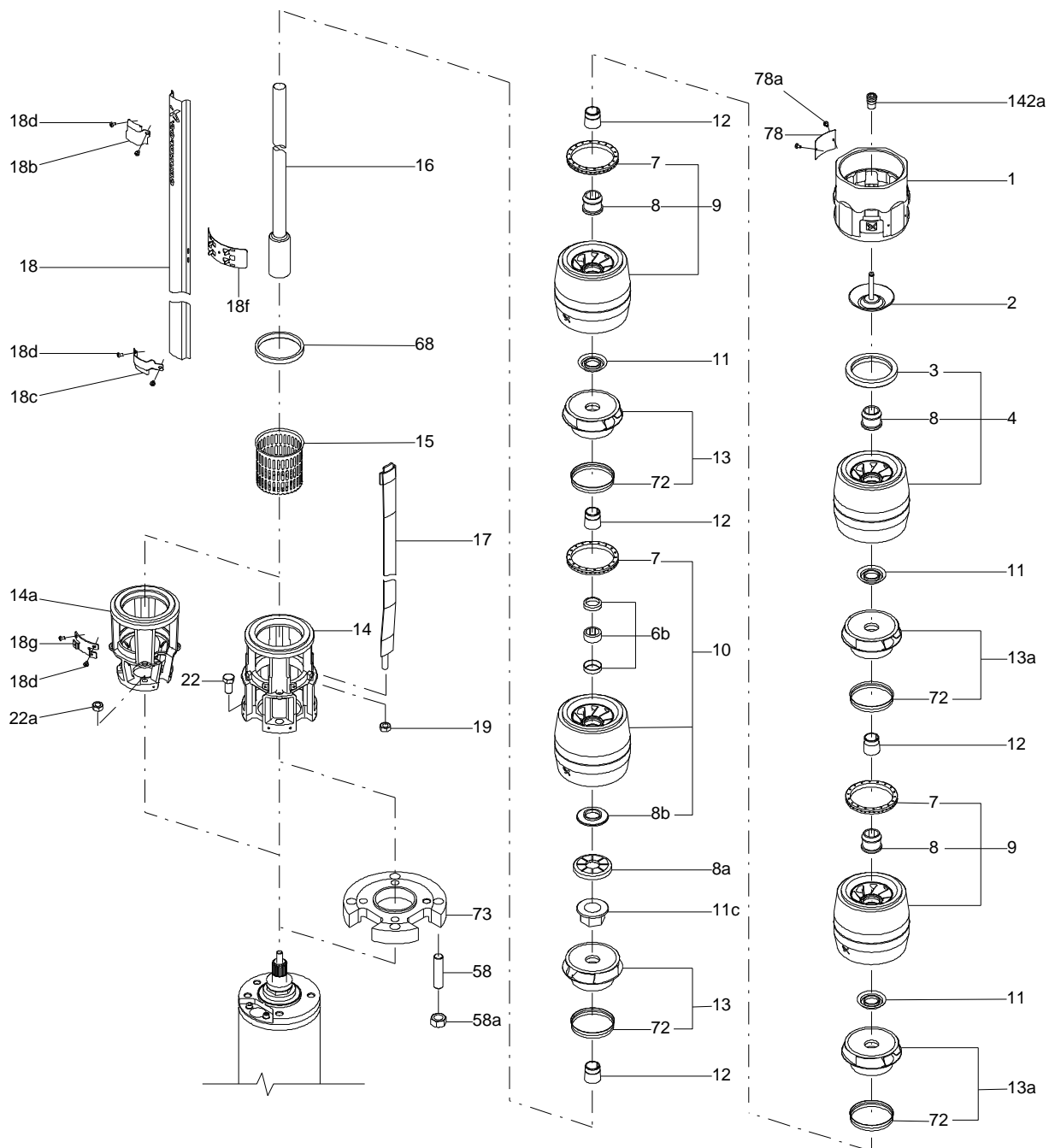
Product name: 230S50-2-AB

Amount: 1

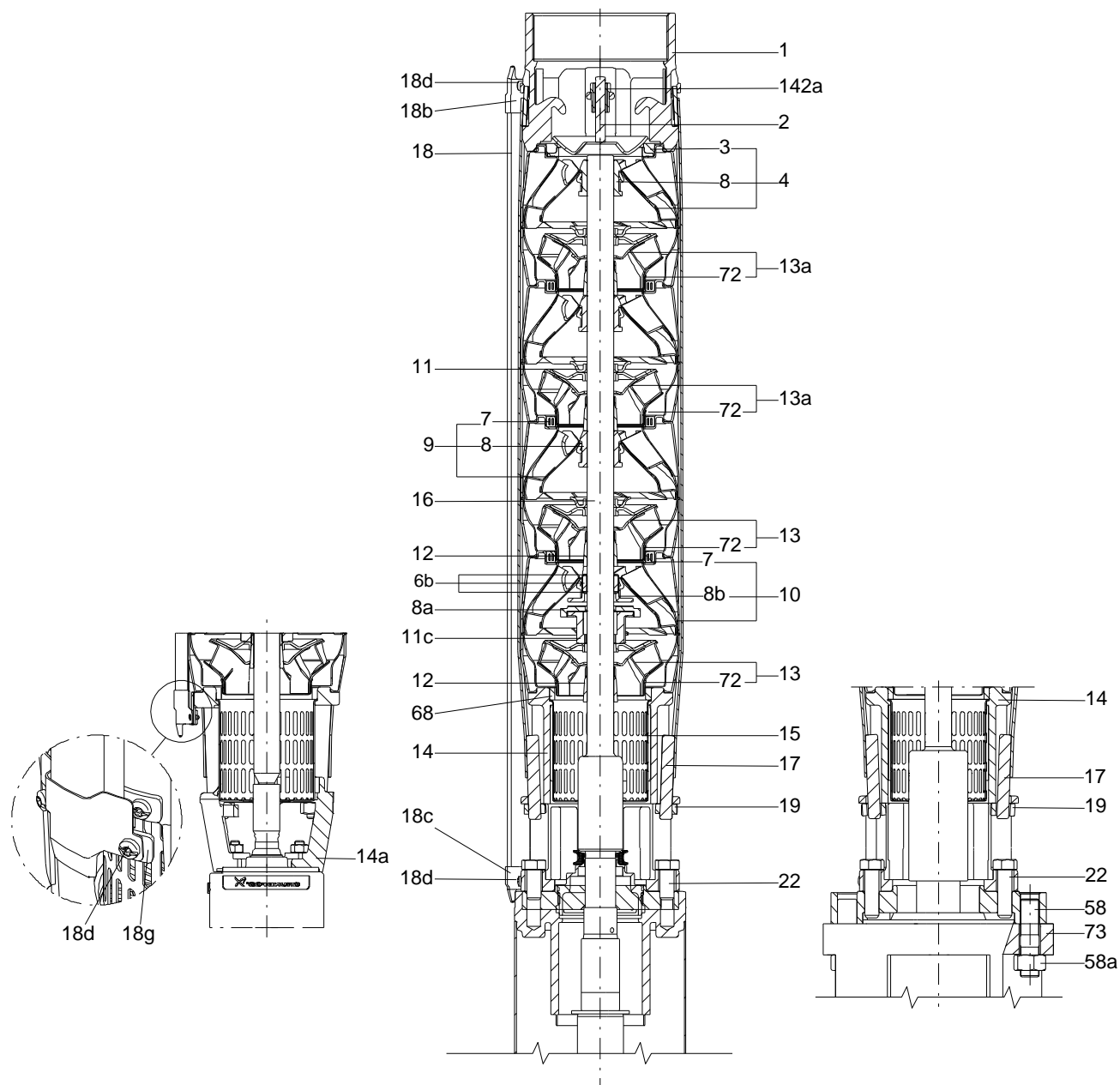
Product No.: 15B700E2

Total: Price on request

Exploded view (TM054016 SP(LDC) w/2 red.impel(XXAA))



Sectional drawing (TM054155 SP(LDC) XXAA stage)



Parts list 230S50-2-AB, Prod number 15B700E2

Valid from 1.3.2016 (1610)

Position	Description	Annotation	Classification data	Part No.	Count	Unit
-	Shaft,cableg,strap				1	pcs
- 16	Shaft cpl.				1	
	Coupling					
- 17	Strap cpl.				4	
	Threaded bush					
	Lug					
18	Cable guard				1	
1	Valve casing				1	pcs
2	Valve				1	pcs
- 4	Chamber cpl.				1	pcs
	Chamber				1	
3	Valve seat				1	
8	Bearing				1	
- 8	Bearing cpl.				1	pcs
	Pipe				1	
8a	Washer				1	pcs
- 10	Chamber cpl.				1	pcs
	Chamber				1	
6b	Bearing				1	
6b	Cup				2	
7	Seal ring				1	
8b	Stop ring				1	
- 13	Impeller cpl.				1	pcs
11c	Nut				1	
12	Split cone				1	
72	Wear ring				1	
- 13	Impeller cpl.				1	pcs
11	Split cone nut				1	
12	Split cone				1	
72	Wear ring				1	
14	Suction interconnector				1	pcs
15	Strainer				1	pcs
18b	Clamp				2	pcs
18d	Hex socket head cap screw				2	pcs
18d	Hex socket head cap screw				4	pcs
18g	Clip				1	pcs
19	Nut		Thread: M10		4	pcs
68	Seal ring				1	pcs
78	Nameplate				2	pcs
78a	Rivet				2	pcs