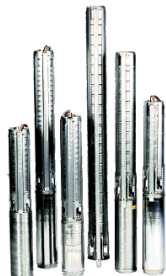


## Tender Text



Product photo could vary from the actual product

Product No.: [18BG0004](#)

### 1100S1500-4

Multi-stage submersible pump for raw water supply, groundwater lowering and pressure boosting. The pump is suitable for pumping clean, thin, non-aggressive liquids without solid particles or fibers.

The pump is made entirely of Stainless steel DIN W.-Nr. EN 1.4301 and suitable for horizontal and vertical installation.

The pump is fitted with a built-in non-return valve.

### Liquid:

Pumped liquid:	Water
Maximum liquid temperature:	104 °F
Liquid temperature during operation:	68 °F
Density:	62.29 lb/ft <sup>3</sup>

### Technical:

Speed for pump data:	3450 rpm
Actual calculated flow:	1130 US gpm
Resulting head of the pump:	456.6 ft
Curve tolerance:	ISO9906:2012 3B

### Materials:

Pump:	Stainless steel EN 1.4301 AISI 304
Impeller:	Stainless steel EN 1.4301 AISI 304

### Installation:

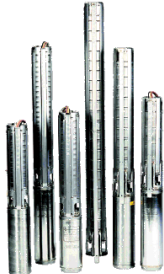
Pump outlet:	6"NPT
Motor diameter:	8 inch

### Electrical data:

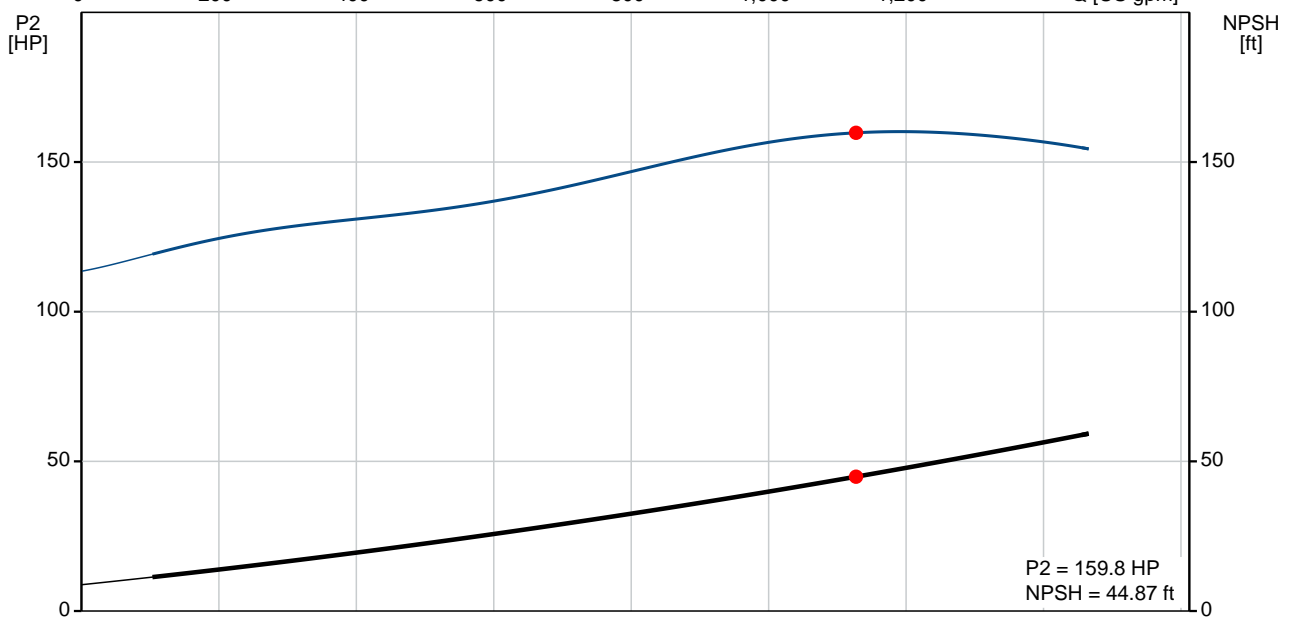
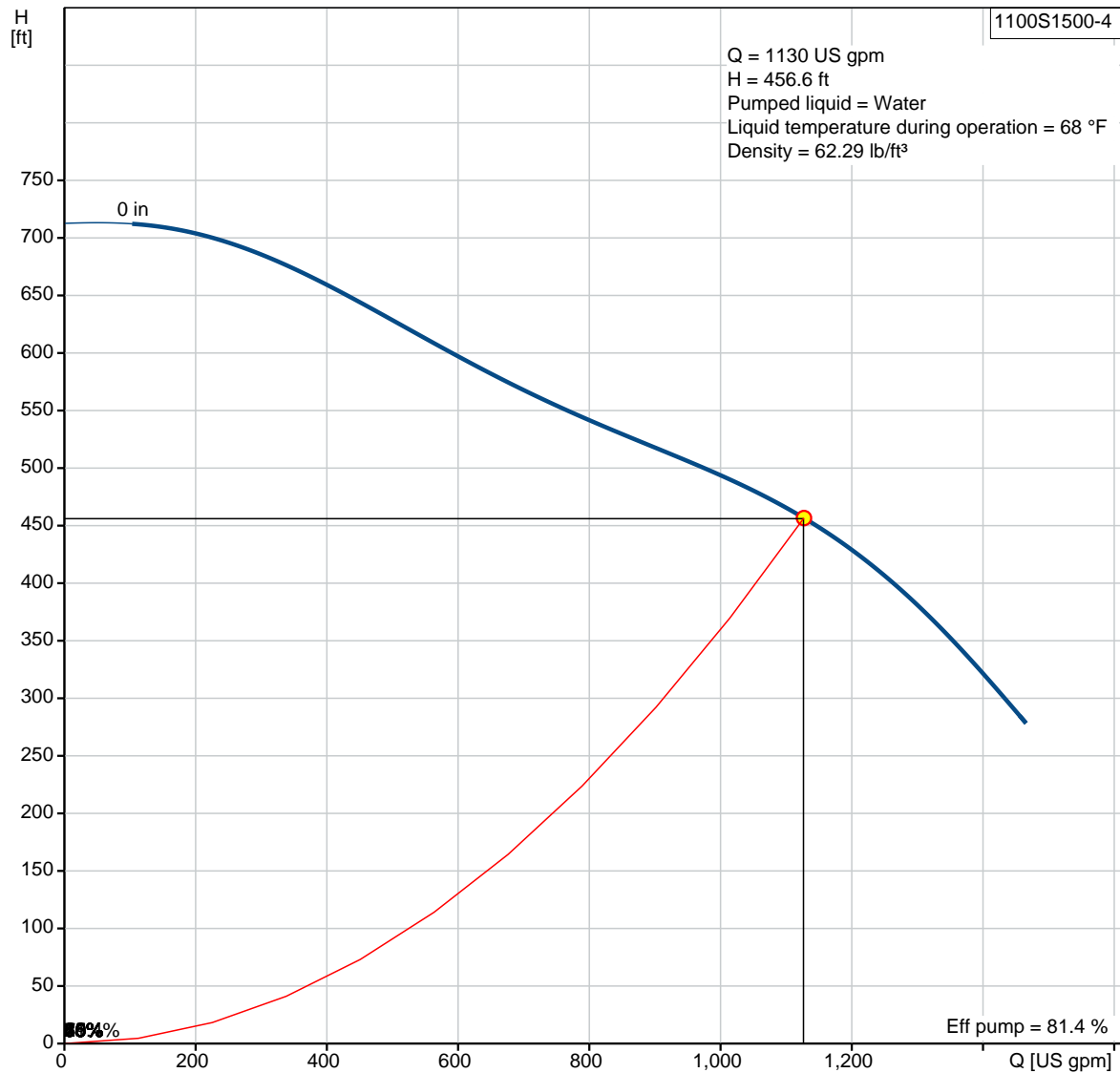
Rated power - P2:	150 HP
Power (P2) required by pump:	150 HP
Start. method:	direct-on-line

### Others:

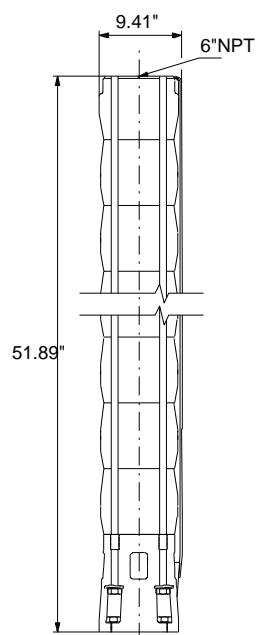
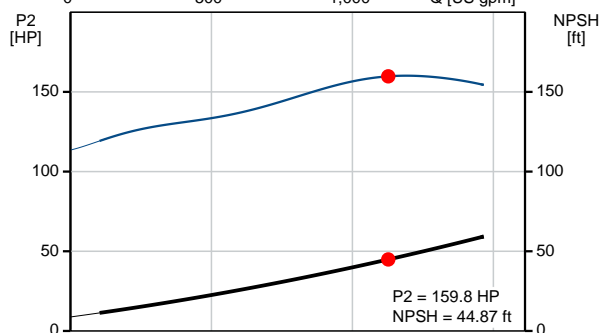
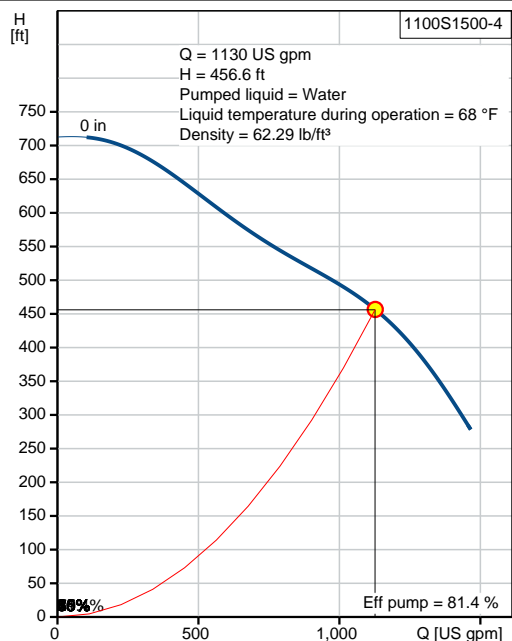
ErP status:	EuP Standalone/Prod.
Net weight:	160 lb
Gross weight:	220 lb
Shipping volume:	8.12 ft <sup>3</sup>

Position	Count	Description
	1	<p><b>1100S1500-4</b></p>  <p>Product photo could vary from the actual product</p> <p>Product No.: <a href="#">18BG0004</a></p> <p>Multi-stage submersible pump for raw water supply, groundwater lowering and pressure boosting. The pump is suitable for pumping clean, thin, non-aggressive liquids without solid particles or fibers.</p> <p>The pump is made entirely of Stainless steel DIN W.-Nr. EN 1.4301 and suitable for horizontal and vertical installation. The pump is fitted with a built-in non-return valve.</p> <p><b>Liquid:</b></p> <p>Pumped liquid: Water</p> <p>Maximum liquid temperature: 104 °F</p> <p>Liquid temperature during operation: 68 °F</p> <p>Density: 62.29 lb/ft³</p> <p><b>Technical:</b></p> <p>Speed for pump data: 3450 rpm</p> <p>Actual calculated flow: 1130 US gpm</p> <p>Resulting head of the pump: 456.6 ft</p> <p>Curve tolerance: ISO9906:2012 3B</p> <p><b>Materials:</b></p> <p>Pump: Stainless steel EN 1.4301 AISI 304</p> <p>Impeller: Stainless steel EN 1.4301 AISI 304</p> <p><b>Installation:</b></p> <p>Pump outlet: 6"NPT</p> <p>Motor diameter: 8 inch</p> <p><b>Electrical data:</b></p> <p>Rated power - P2: 150 HP</p> <p>Power (P2) required by pump: 150 HP</p> <p>Start. method: direct-on-line</p> <p><b>Others:</b></p> <p>ErP status: EuP Standalone/Prod.</p> <p>Net weight: 160 lb</p> <p>Gross weight: 220 lb</p> <p>Shipping volume: 8.12 ft³</p>

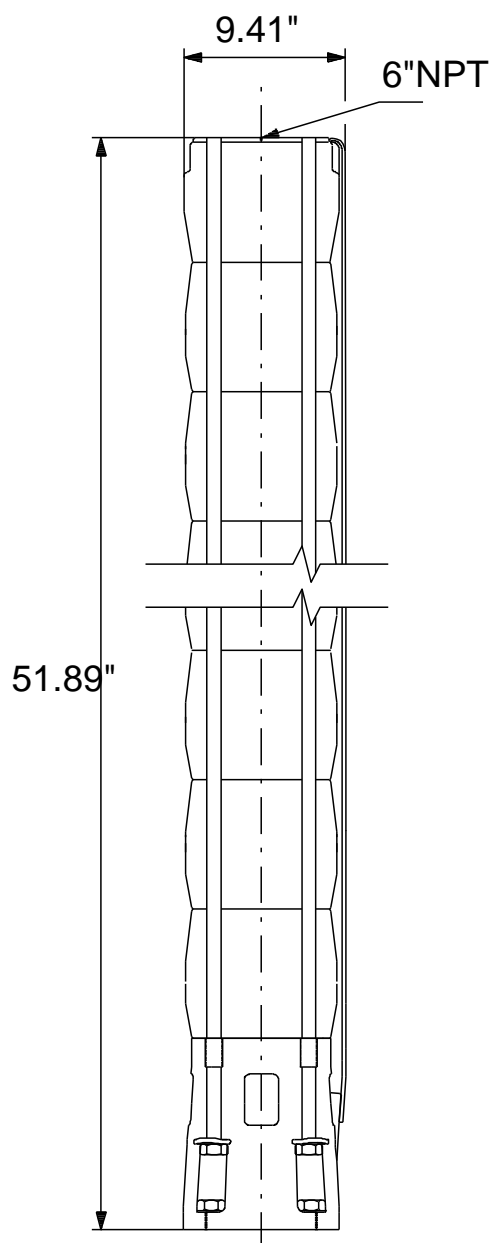
## 18BG0004 1100S1500-4 60 Hz



Description	Value
<b>General information:</b>	
Product name:	1100S1500-4
Product No.:	18BG0004
EAN:	5700391602528
<b>Technical:</b>	
Speed for pump data:	3450 rpm
Actual calculated flow:	1130 US gpm
Resulting head of the pump:	456.6 ft
Stages:	4
Impeller reduc.:	NONE
Curve tolerance:	ISO9906:2012 3B
Model:	C
Valve:	YES
<b>Materials:</b>	
Pump:	Stainless steel
	EN 1.4301
	AISI 304
Impeller:	Stainless steel
	EN 1.4301
	AISI 304
<b>Installation:</b>	
Pump outlet:	6"NPT
Motor diameter:	8 inch
<b>Liquid:</b>	
Pumped liquid:	Water
Maximum liquid temperature:	104 °F
Liquid temperature during operation:	68 °F
Density:	62.29 lb/ft³
<b>Electrical data:</b>	
Applic. motor:	GRUNDFOS
Rated power - P2:	150 HP
Power (P2) required by pump:	150 HP
Start. method:	direct-on-line
<b>Others:</b>	
ErP status:	EuP Standalone/Prod.
Net weight:	160 lb
Gross weight:	220 lb
Shipping volume:	8.12 ft³
Sales region:	Namreg



## 18BG0004 1100S1500-4 60 Hz



Note! All units are in [mm] unless otherwise stated.  
Disclaimer: This simplified dimensional drawing does not show all details.



Company name:

Created by:

Phone:

Date:

2/22/2018

---

**Order Data:**

Product name: 1100S1500-4

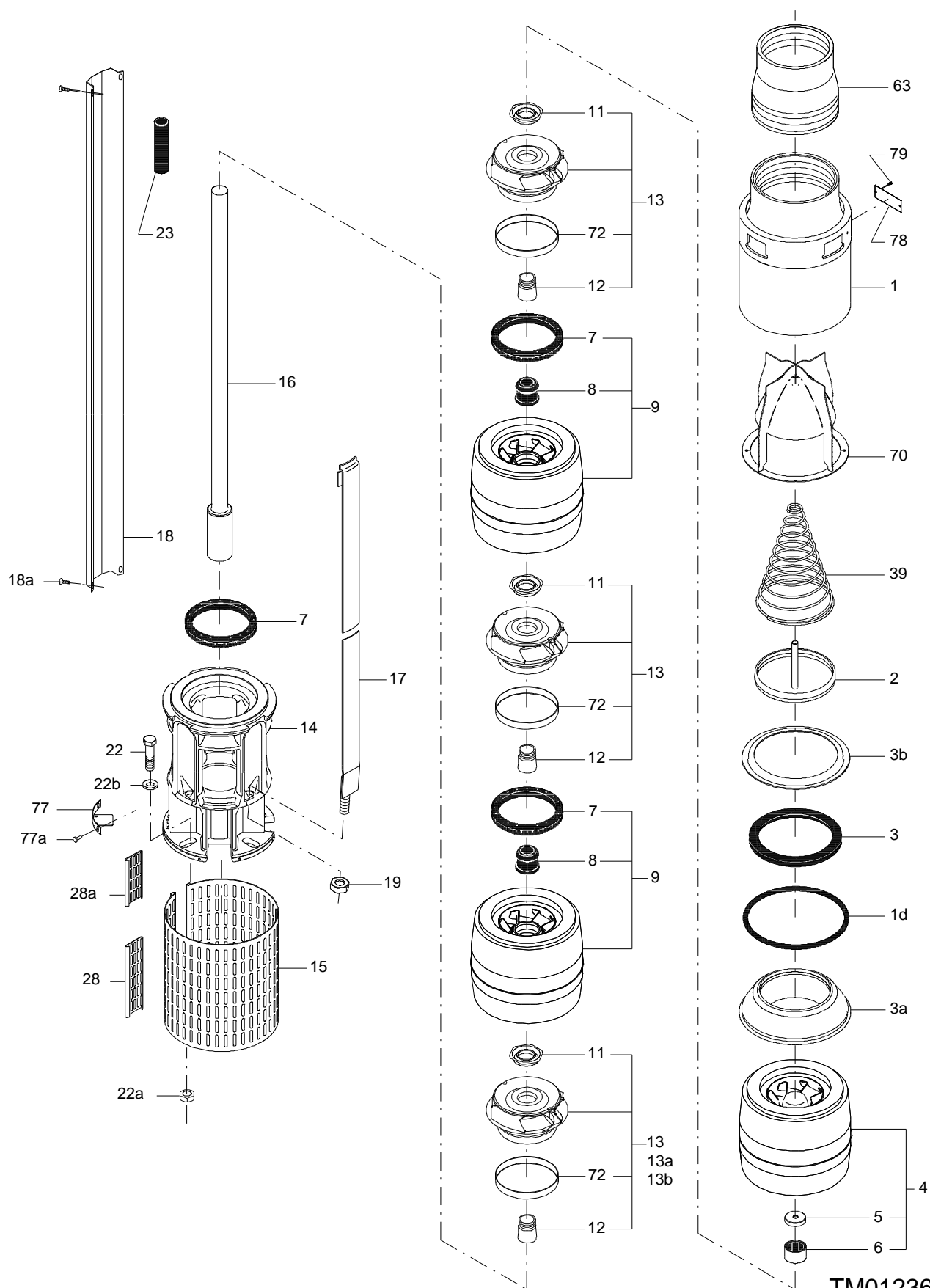
Amount: 1

Product No.: 18BG0004

Total: Price on request

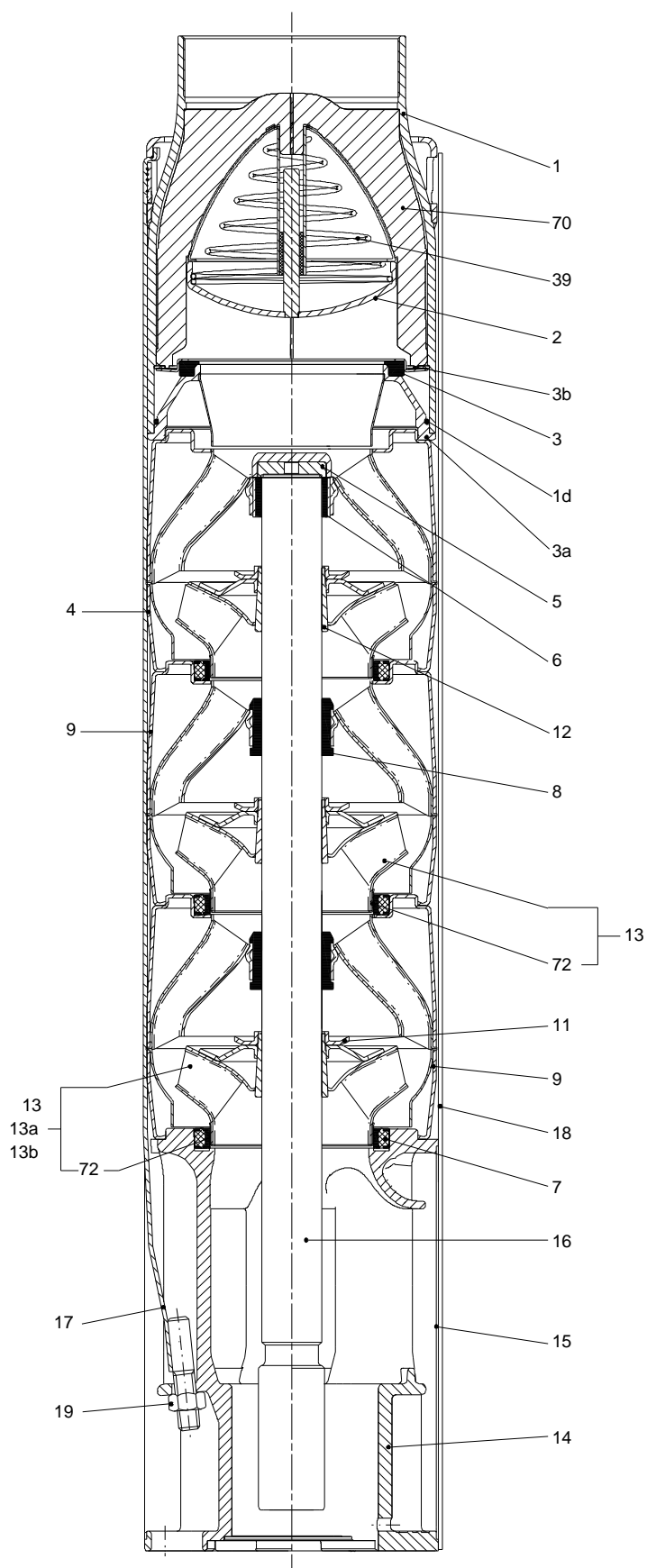
---

## Exploded view (TM012362 SP215 model C)



TM012362

## Sectional drawing (TM012363 SP215 model C)





**Parts list 1100S1500-4, Prod number 18BG0004**

**Valid from 1.3.1998 (9810)**

Position	Description	Annotation	Classification data	Part No.	Count	Unit
1	Valve casing				1	pcs
1d	O-ring				1	pcs
- 2	Valve cup				1	pcs
	Shaft				1	
2	Flap valve				1	
3	Valve seat				1	pcs
3a	Retainer for valve seat				1	pcs
3b	Retainer for valve seat				1	pcs
+ 4	Chamber cpl.				1	pcs
7	Seal ring				1	pcs
+ 9	Chamber cpl.				3	pcs
13	Impeller cpl.				4	pcs
14	Suction interconnector				1	pcs
15	Strainer				1	pcs
16	Pump shaft cpl.		Diameter: 45 Length: 953		1	pcs
- 17	Strap cpl.				4	pcs
	Threaded bush				1	
	Lug				1	
18	Cable guard cpl.				1	pcs
19	Nut				4	pcs
19a	Nut		Thread: M16		4	pcs
22	Hex head bolt		Length: 60 Thread: M16		4	pcs
23	Rubber guard				1	pcs
28	Lock				1	pcs
28a	Lock				1	pcs
39	Helical compression spring				1	pcs
- 70	Valve guide				1	pcs
	Valve guide				1	
	Valve guide				1	
	Valve guide				1	
	Valve guide				1	
	Cone				1	
77	Cover plate				2	pcs
77a	Cross recess Pan head screw				6	pcs
78	Nameplate				2	pcs
78a	Rivet				2	pcs