

Tender Text



Product photo could vary from the actual product

Product No.: [18BG0005](#)

1100S2000-5

Multi-stage submersible pump for raw water supply, groundwater lowering and pressure boosting. The pump is suitable for pumping clean, thin, non-aggressive liquids without solid particles or fibers.

The pump is made entirely of Stainless steel DIN W.-Nr. EN 1.4301 and suitable for horizontal and vertical installation.

The pump is fitted with a built-in non-return valve.

Liquid:

Pumped liquid: Water
Maximum liquid temperature: 104 °F
Liquid temperature during operation: 68 °F
Density: 62.29 lb/ft³

Technical:

Speed for pump data: 3450 rpm
Actual calculated flow: 1130 US gpm
Resulting head of the pump: 573.7 ft
Curve tolerance: ISO9906:2012 3B

Materials:

Pump: Stainless steel
EN 1.4301
AISI 304
Impeller: Stainless steel
EN 1.4301
AISI 304

Installation:

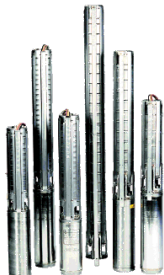
Pump outlet: 6"NPT
Motor diameter: 8 inch

Electrical data:

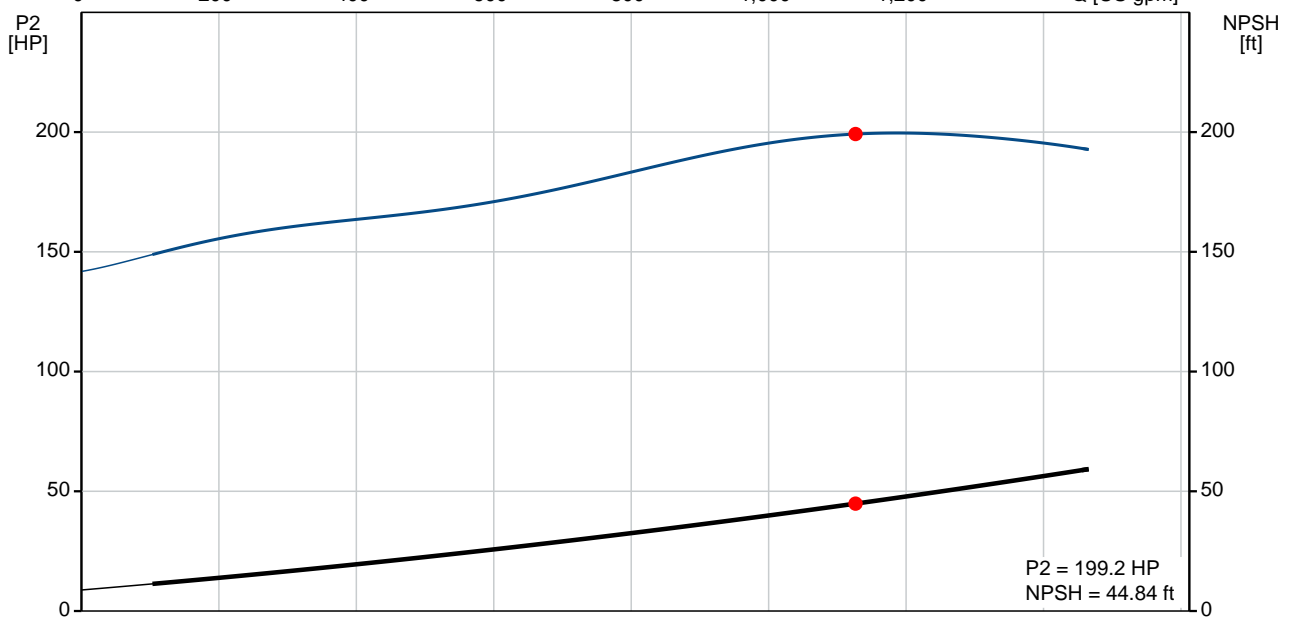
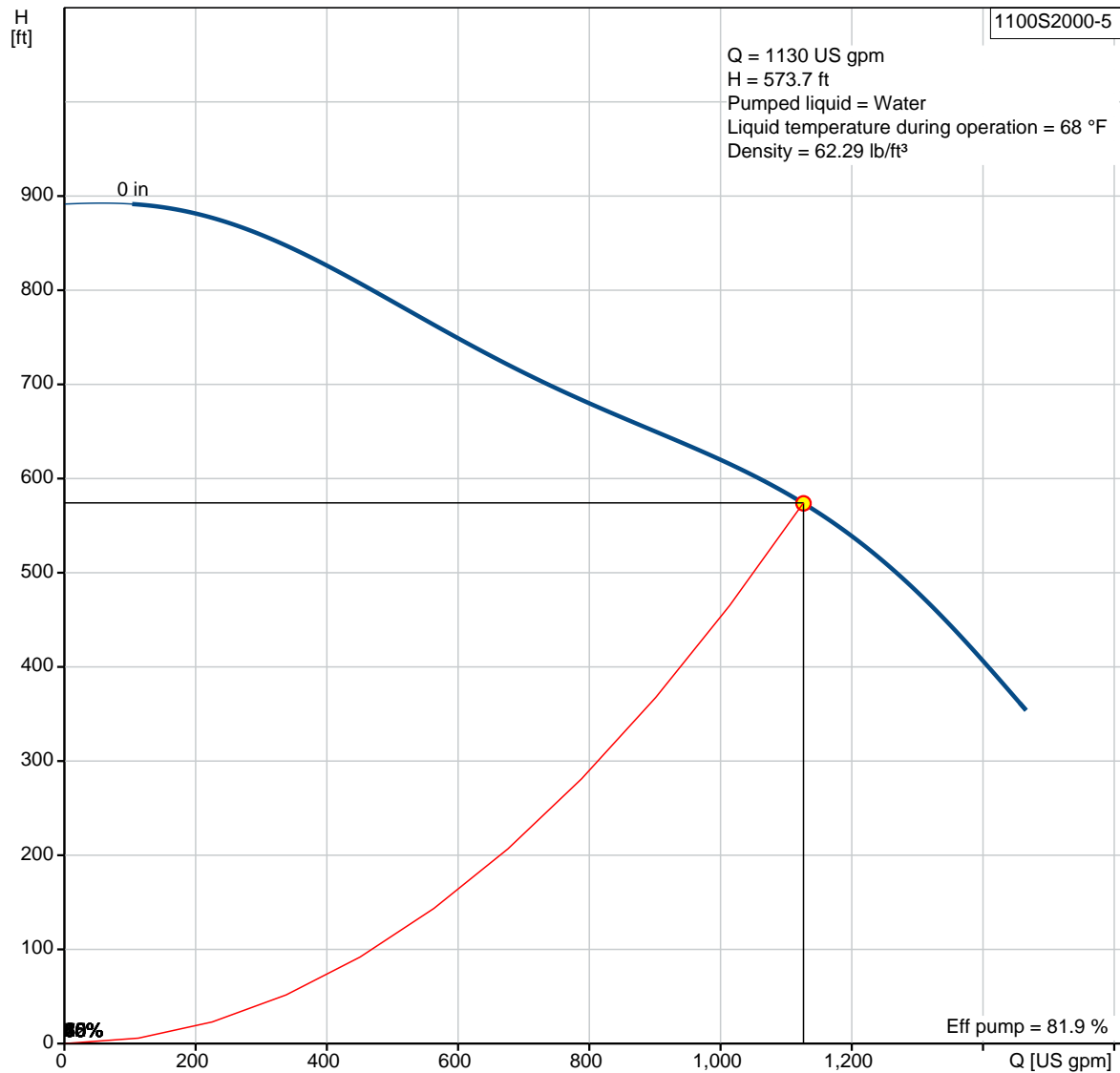
Rated power - P2: 197.1 HP
Power (P2) required by pump: 197.1 HP
Start. method: direct-on-line

Others:

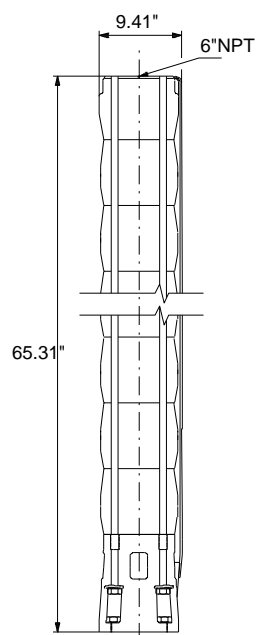
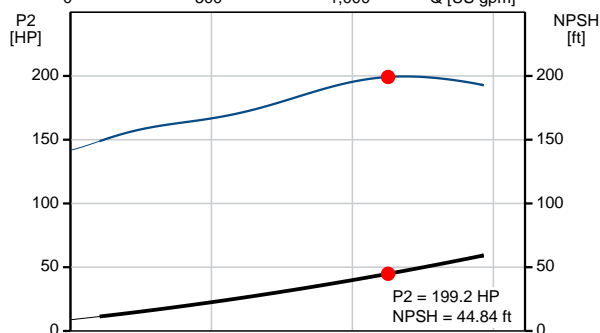
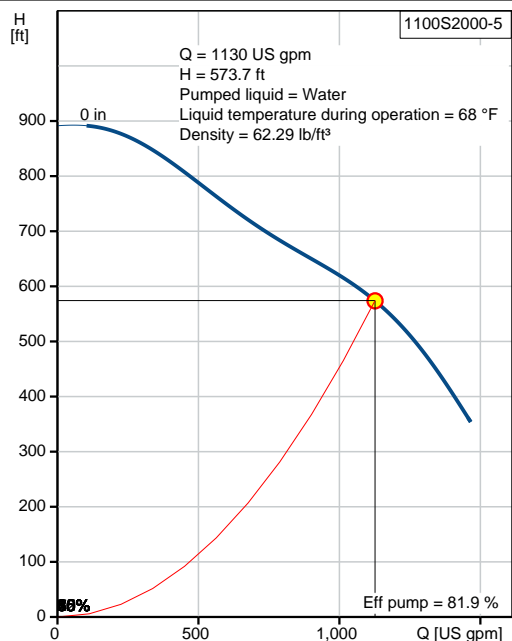
ErP status: EuP Standalone/Prod.
Net weight: 207 lb
Gross weight: 276 lb
Shipping volume: 10 ft³

Position	Count	Description
	1	<p>1100S2000-5</p>  <p>Product photo could vary from the actual product</p> <p>Product No.: 18BG0005 Multi-stage submersible pump for raw water supply, groundwater lowering and pressure boosting. The pump is suitable for pumping clean, thin, non-aggressive liquids without solid particles or fibers.</p> <p>The pump is made entirely of Stainless steel DIN W.-Nr. EN 1.4301 and suitable for horizontal and vertical installation. The pump is fitted with a built-in non-return valve.</p> <p>Liquid: Pumped liquid: Water Maximum liquid temperature: 104 °F Liquid temperature during operation: 68 °F Density: 62.29 lb/ft³</p> <p>Technical: Speed for pump data: 3450 rpm Actual calculated flow: 1130 US gpm Resulting head of the pump: 573.7 ft Curve tolerance: ISO9906:2012 3B</p> <p>Materials: Pump: Stainless steel EN 1.4301 AISI 304 Impeller: Stainless steel EN 1.4301 AISI 304</p> <p>Installation: Pump outlet: 6"NPT Motor diameter: 8 inch</p> <p>Electrical data: Rated power - P2: 197.1 HP Power (P2) required by pump: 197.1 HP Start. method: direct-on-line</p> <p>Others: ErP status: EuP Standalone/Prod. Net weight: 207 lb Gross weight: 276 lb Shipping volume: 10 ft³</p>

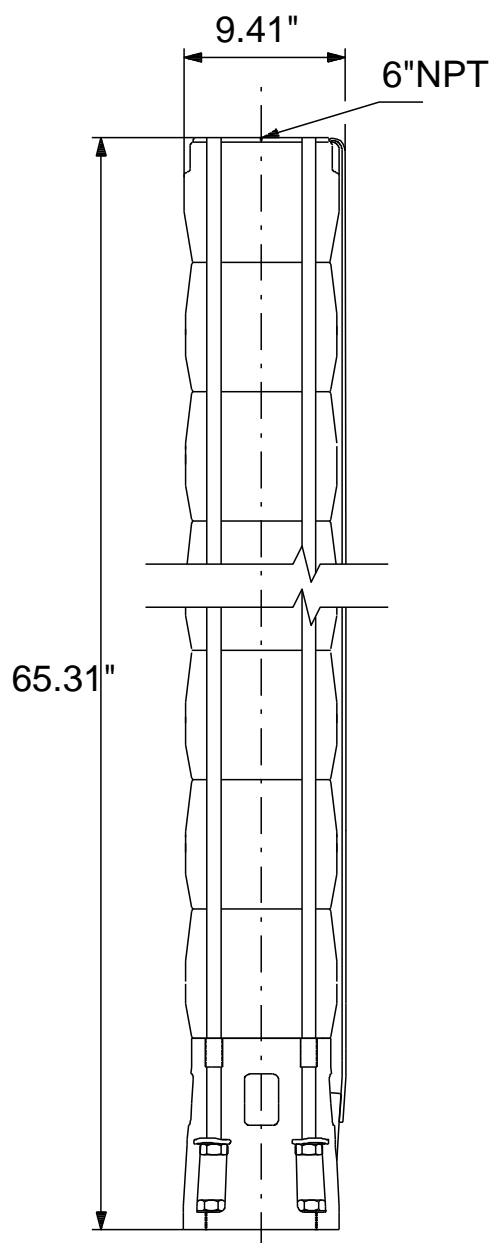
18BG0005 1100S2000-5 60 Hz



Description	Value
General information:	
Product name:	1100S2000-5
Product No.:	18BG0005
EAN:	5700391602559
Technical:	
Speed for pump data:	3450 rpm
Actual calculated flow:	1130 US gpm
Resulting head of the pump:	573.7 ft
Stages:	5
Impeller reduc.:	NONE
Curve tolerance:	ISO9906:2012 3B
Model:	C
Valve:	YES
Materials:	
Pump:	Stainless steel
	EN 1.4301
	AISI 304
Impeller:	Stainless steel
	EN 1.4301
	AISI 304
Installation:	
Pump outlet:	6"NPT
Motor diameter:	8 inch
Liquid:	
Pumped liquid:	Water
Maximum liquid temperature:	104 °F
Liquid temperature during operation:	68 °F
Density:	62.29 lb/ft³
Electrical data:	
Applic. motor:	GRUNDFOS
Rated power - P2:	197.1 HP
Power (P2) required by pump:	197.1 HP
Start. method:	direct-on-line
Others:	
ErP status:	EuP Standalone/Prod.
Net weight:	207 lb
Gross weight:	276 lb
Shipping volume:	10 ft³
Sales region:	Namreg



18BG0005 1100S2000-5 60 Hz



Note! All units are in [mm] unless otherwise stated.
Disclaimer: This simplified dimensional drawing does not show all details.



Company name:

Created by:

Phone:

Date:

2/22/2018

Order Data:

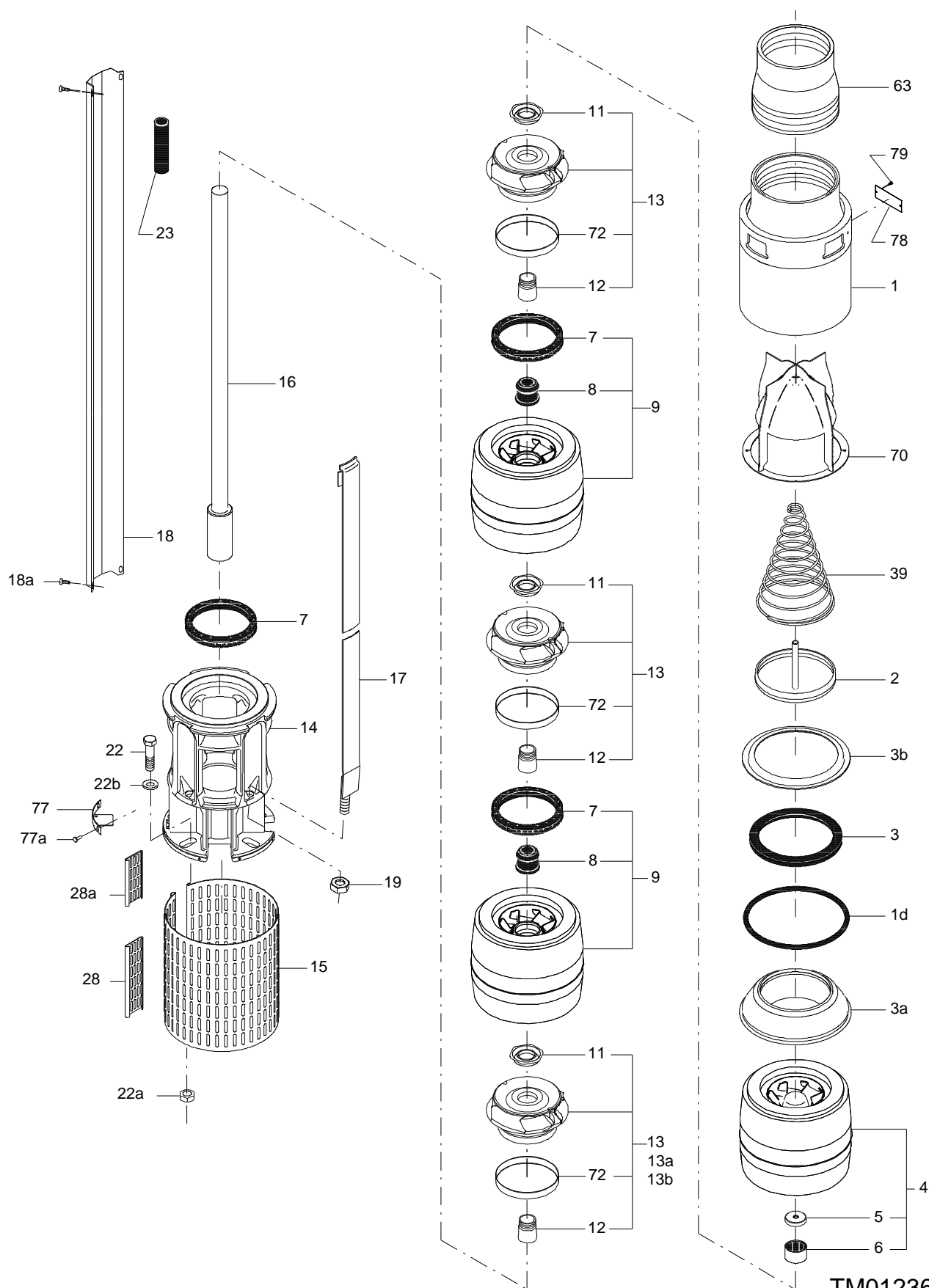
Product name: 1100S2000-5

Amount: 1

Product No.: 18BG0005

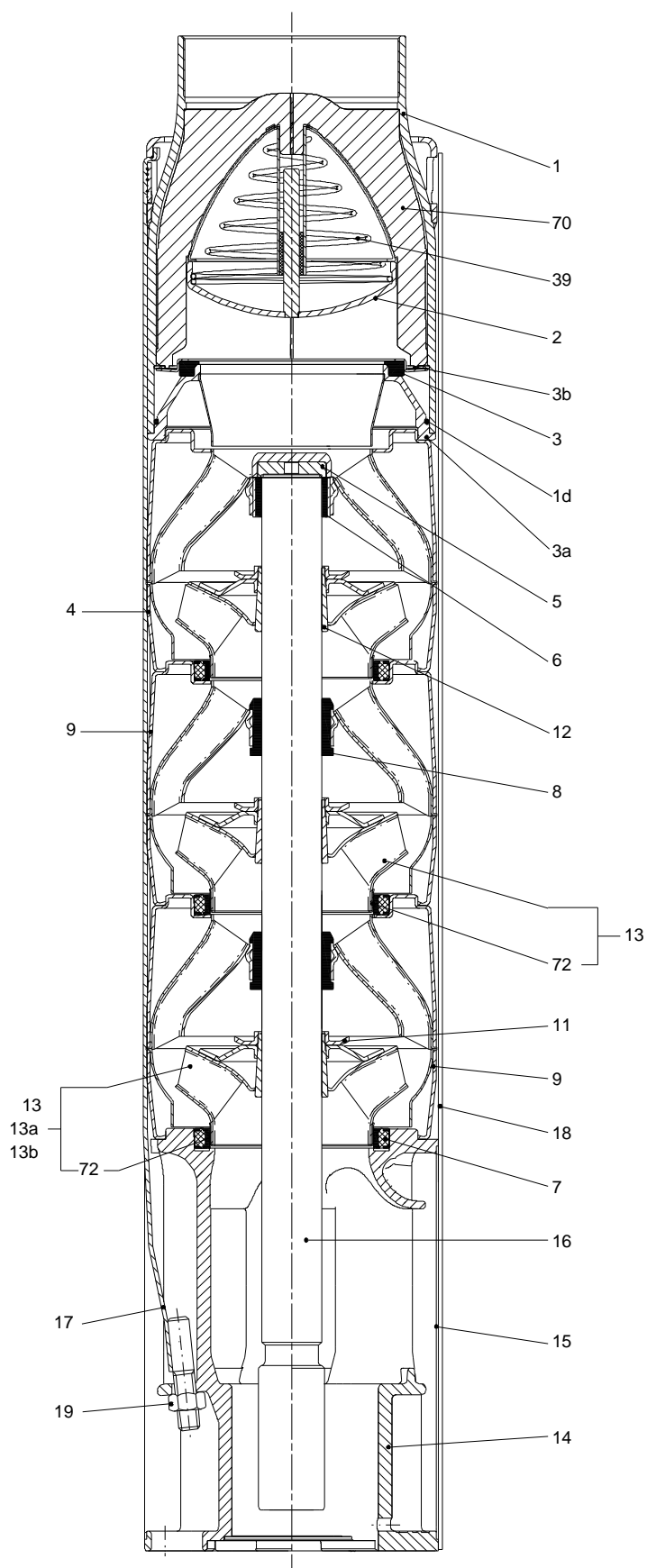
Total: Price on request

Exploded view (TM012362 SP215 model C)



TM012362

Sectional drawing (TM012363 SP215 model C)



Parts list 1100S2000-5, Prod number 18BG0005

Valid from 1.3.1998 (9810)

Position	Description	Annotation	Classification data	Part No.	Count	Unit
1	Valve casing				1	pcs
1d	O-ring				1	pcs
- 2	Valve cup				1	pcs
	Shaft				1	
2	Flap valve				1	
3	Valve seat				1	pcs
3a	Retainer for valve seat				1	pcs
3b	Retainer for valve seat				1	pcs
+ 4	Chamber cpl.				1	pcs
7	Seal ring				1	pcs
+ 9	Chamber cpl.				4	pcs
13	Impeller cpl.				5	pcs
14	Suction interconnector				1	pcs
15	Strainer				1	pcs
16	Pump shaft cpl.		Diameter: 45 Length: 1129		1	pcs
17	Strap cpl.				4	pcs
18	Cable guard cpl.				1	pcs
19	Nut				4	pcs
19a	Nut		Thread: M16		4	pcs
22	Hex head bolt		Length: 60 Thread: M16		4	pcs
23	Rubber guard				1	pcs
28	Lock				1	pcs
28a	Lock				1	pcs
39	Helical compression spring				1	pcs
- 70	Valve guide				1	pcs
	Valve guide				1	
	Valve guide				1	
	Valve guide				1	
	Valve guide				1	
	Cone				1	
77	Cover plate				2	pcs
77a	Cross recess Pan head screw				6	pcs
78	Nameplate				2	pcs
78a	Rivet				2	pcs
106	Discharge pipe				1	pcs