

Tender Text



Product photo could vary from the actual product

Product No.: [18BH0001](#)

1100S400-1

Multi-stage submersible pump for raw water supply, groundwater lowering and pressure boosting. The pump is suitable for pumping clean, thin, non-aggressive liquids without solid particles or fibers.

The pump is made entirely of Stainless steel DIN W.-Nr. EN 1.4301 and suitable for horizontal and vertical installation.

The pump is fitted with a built-in non-return valve.

Liquid:

Pumped liquid: Water
Maximum liquid temperature: 104 °F
Liquid temperature during operation: 68 °F
Density: 62.29 lb/ft³

Technical:

Speed for pump data: 3450 rpm
Actual calculated flow: 1130 US gpm
Resulting head of the pump: 105.9 ft
Curve tolerance: ISO9906:2012 3B

Materials:

Pump: Stainless steel
EN 1.4301
AISI 304
Impeller: Stainless steel
EN 1.4301
AISI 304

Installation:

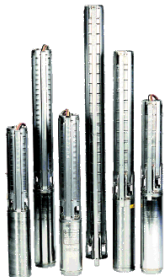
Pump outlet: 6"NPT
Motor diameter: 8 inch

Electrical data:

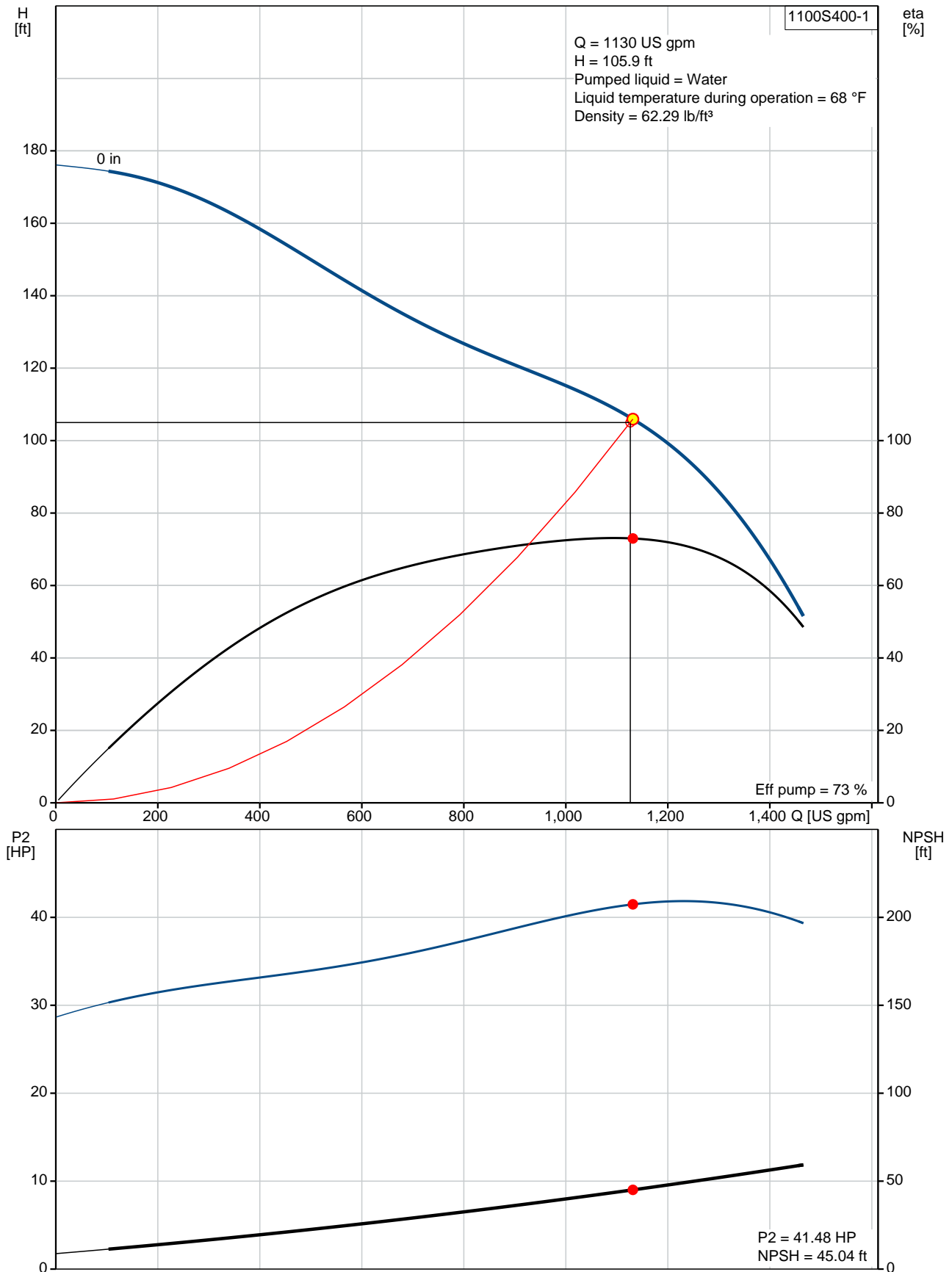
Rated power - P2: 40 HP
Power (P2) required by pump: 40 HP
Start. method: direct-on-line

Others:

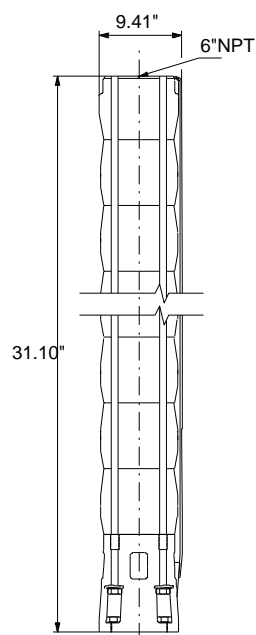
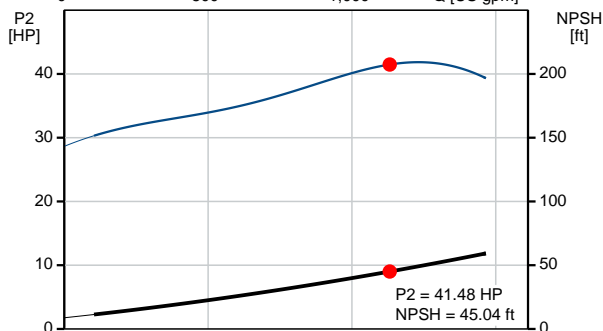
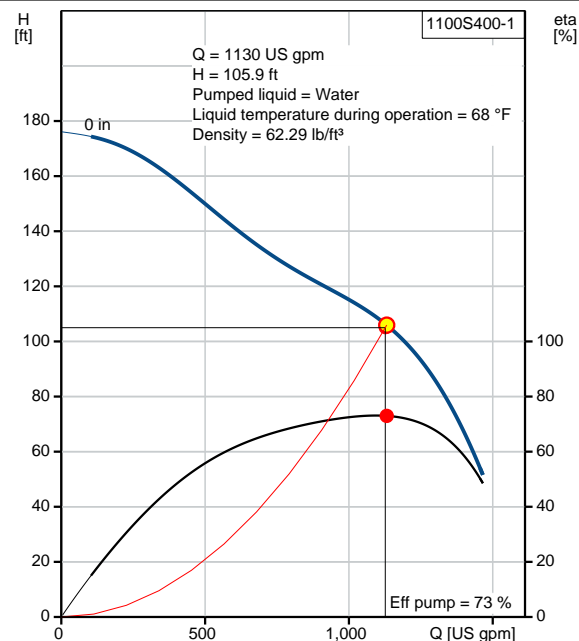
ErP status: EuP Standalone/Prod.
Net weight: 93.7 lb
Gross weight: 154 lb
Shipping volume: 8.12 ft³

Position	Count	Description
	1	<p>1100S400-1</p>  <p>Product photo could vary from the actual product</p> <p>Product No.: 18BH0001</p> <p>Multi-stage submersible pump for raw water supply, groundwater lowering and pressure boosting. The pump is suitable for pumping clean, thin, non-aggressive liquids without solid particles or fibers.</p> <p>The pump is made entirely of Stainless steel DIN W.-Nr. EN 1.4301 and suitable for horizontal and vertical installation. The pump is fitted with a built-in non-return valve.</p> <p>Liquid:</p> <p>Pumped liquid: Water</p> <p>Maximum liquid temperature: 104 °F</p> <p>Liquid temperature during operation: 68 °F</p> <p>Density: 62.29 lb/ft³</p> <p>Technical:</p> <p>Speed for pump data: 3450 rpm</p> <p>Actual calculated flow: 1130 US gpm</p> <p>Resulting head of the pump: 105.9 ft</p> <p>Curve tolerance: ISO9906:2012 3B</p> <p>Materials:</p> <p>Pump: Stainless steel EN 1.4301 AISI 304</p> <p>Impeller: Stainless steel EN 1.4301 AISI 304</p> <p>Installation:</p> <p>Pump outlet: 6"NPT</p> <p>Motor diameter: 8 inch</p> <p>Electrical data:</p> <p>Rated power - P2: 40 HP</p> <p>Power (P2) required by pump: 40 HP</p> <p>Start. method: direct-on-line</p> <p>Others:</p> <p>ErP status: EuP Standalone/Prod.</p> <p>Net weight: 93.7 lb</p> <p>Gross weight: 154 lb</p> <p>Shipping volume: 8.12 ft³</p>

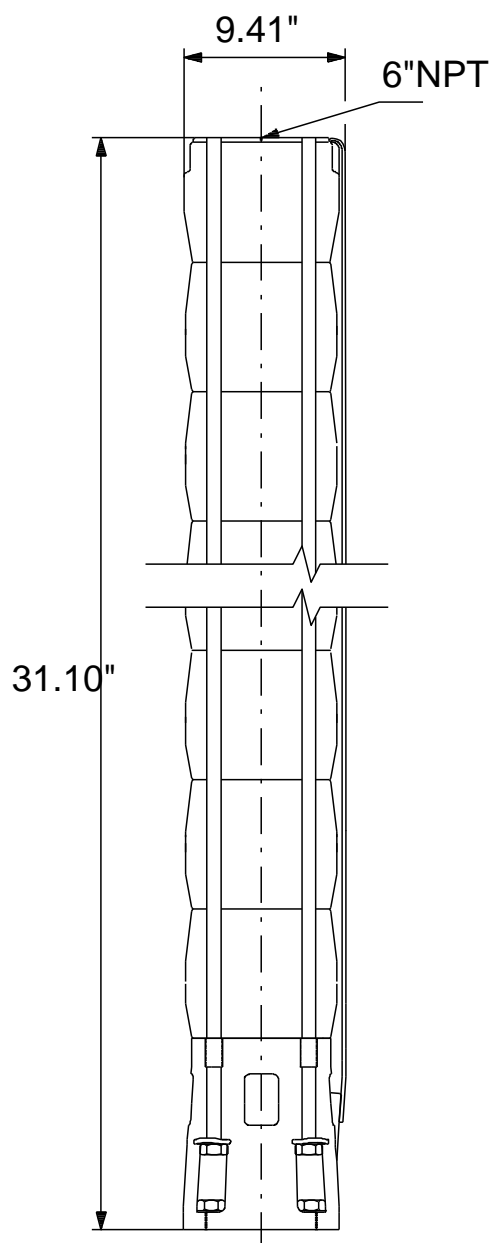
18BH0001 1100S400-1 60 Hz



Description	Value
General information:	
Product name:	1100S400-1
Product No.:	18BH0001
EAN:	5700394518536
Technical:	
Speed for pump data:	3450 rpm
Actual calculated flow:	1130 US gpm
Resulting head of the pump:	105.9 ft
Stages:	1
Impeller reduc.:	NONE
Curve tolerance:	ISO9906:2012 3B
Model:	C
Valve:	YES
Materials:	
Pump:	Stainless steel
	EN 1.4301
	AISI 304
Impeller:	Stainless steel
	EN 1.4301
	AISI 304
Installation:	
Pump outlet:	6"NPT
Motor diameter:	8 inch
Liquid:	
Pumped liquid:	Water
Maximum liquid temperature:	104 °F
Liquid temperature during operation:	68 °F
Density:	62.29 lb/ft³
Electrical data:	
Applic. motor:	GRUNDFOS
Rated power - P2:	40 HP
Power (P2) required by pump:	40 HP
Start. method:	direct-on-line
Others:	
ErP status:	EuP Standalone/Prod.
Net weight:	93.7 lb
Gross weight:	154 lb
Shipping volume:	8.12 ft³
Sales region:	Namreg



18BH0001 1100S400-1 60 Hz



Note! All units are in [mm] unless otherwise stated.
Disclaimer: This simplified dimensional drawing does not show all details.



Company name:

Created by:

Phone:

Date:

2/22/2018

Order Data:

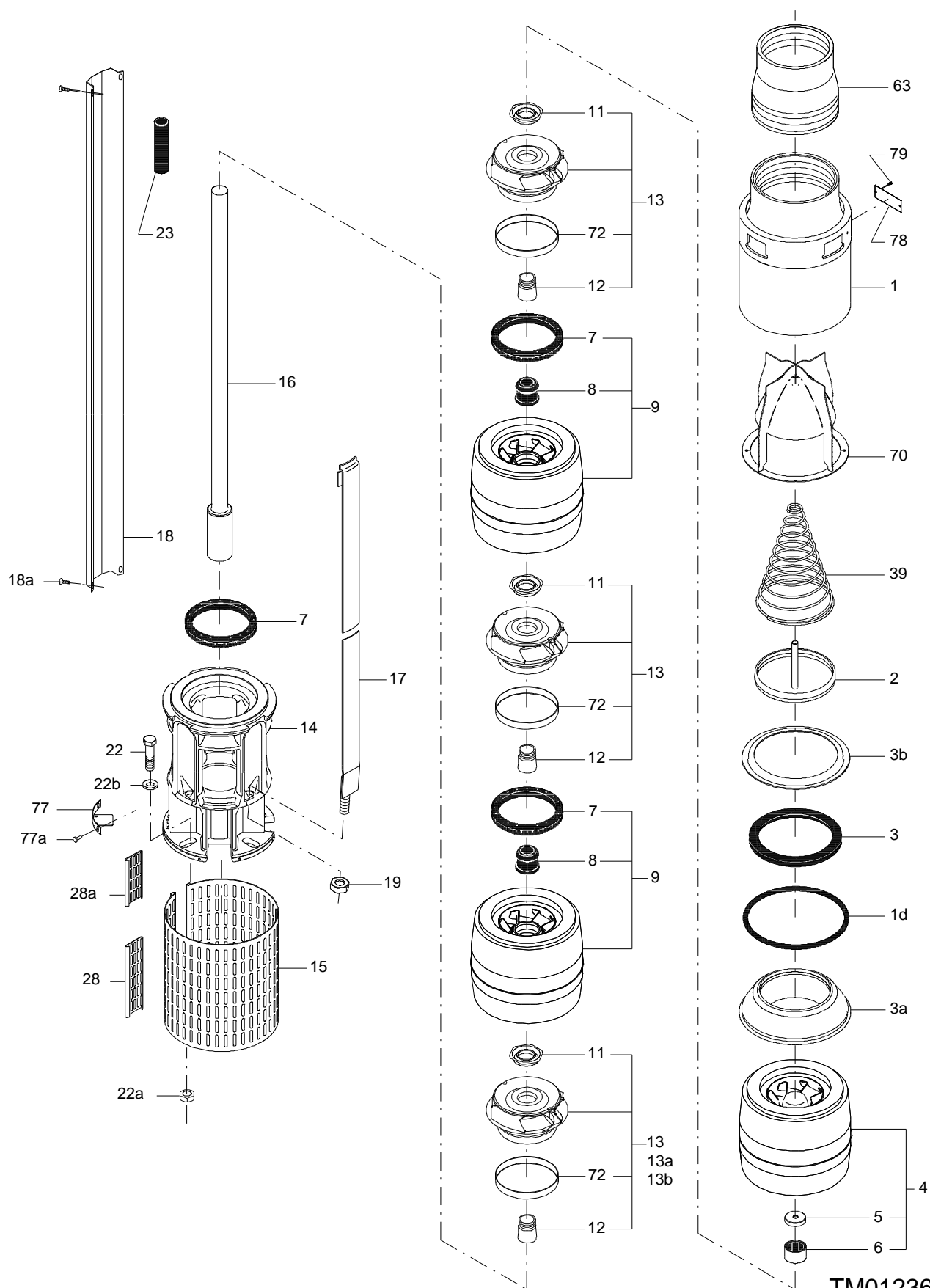
Product name: 1100S400-1

Amount: 1

Product No.: 18BH0001

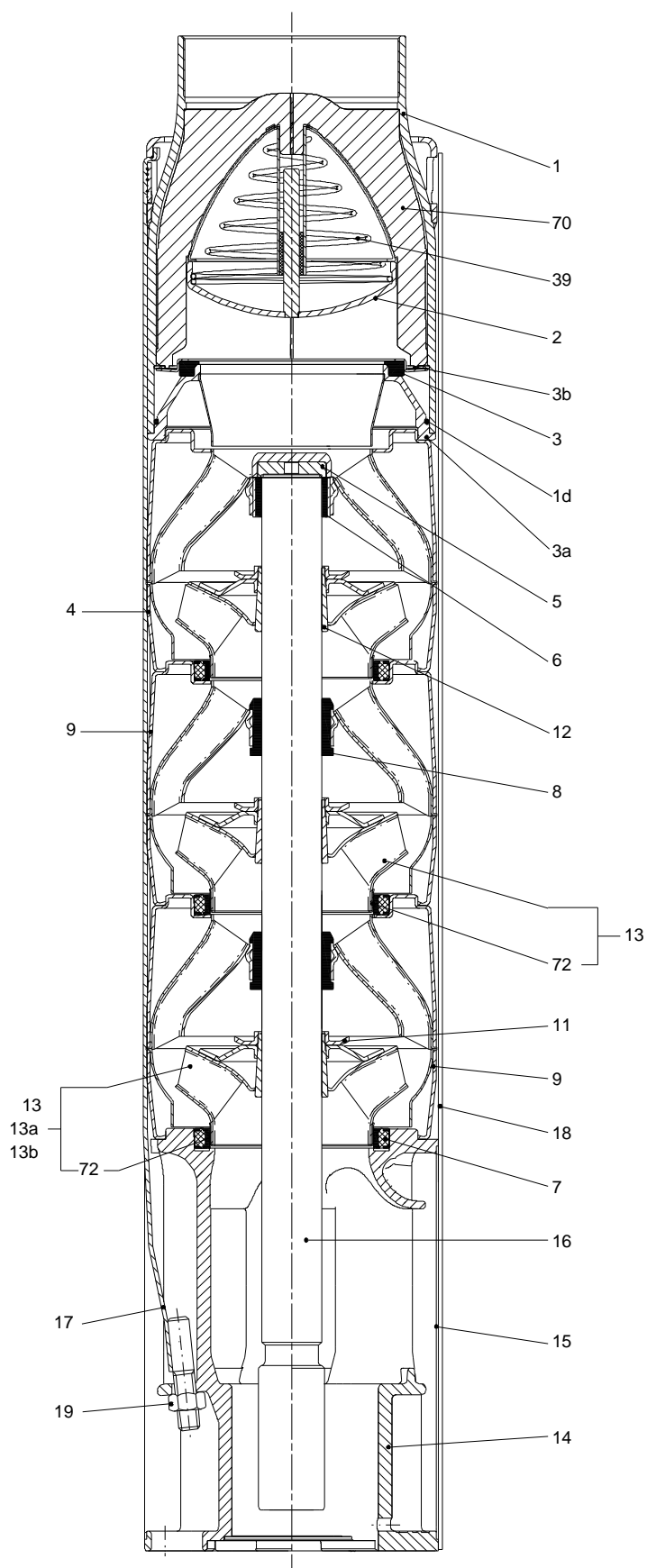
Total: Price on request

Exploded view (TM012362 SP215 model C)



TM012362

Sectional drawing (TM012363 SP215 model C)



Parts list 1100S400-1, Prod number 18BH0001

Valid from 1.3.1988 (8810)

Position	Description	Annotation	Classification data	Part No.	Count	Unit
	Grease				1	G
	Grease				4	G
-	Shaft,cableg,strap				1	pcs
	Strap				4	
- 16	Pump shaft cpl.				1	
-	Coupling cpl.					
	Washer					
	Coupling					
32	O-ring					
- 17	Strap cpl.				4	
	Threaded bush					
	Lug					
- 18	Cable guard				1	
	Holder for cable guard					
	Holder for cable guard					
	Rail for cable guard					
1	Valve casing				1	pcs
1d	O-ring				1	pcs
- 2	Valve cup				1	pcs
	Shaft				1	
2	Flap valve				1	
3	Valve seat				1	pcs
3a	Retainer for valve seat				1	pcs
3b	Retainer for valve seat				1	pcs
+ 4	Chamber cpl.				1	pcs
7	Seal ring				1	pcs
13	Impeller cpl.				1	pcs
14	Suction interconnector				1	pcs
15	Strainer				1	pcs
19	Nut				4	pcs
19	Nut				4	pcs
22	Hex head bolt		Length: 60 Thread: M16		4	pcs
23	Rubber guard				1	pcs
39	Helical compression spring				1	pcs
- 70	Valve guide				1	pcs
	Valve guide				1	
	Valve guide				1	
	Valve guide				1	
	Cone				1	
71	Washer				4	pcs
77a	Cross recess Pan head screw				2	pcs
77a	Cross recess Pan head screw				2	pcs
77a	Cross recess Pan head screw				4	pcs