

| | | |
|-----------------------|------------------------|-----------------|
| PROJECT: _____ | UNIT TAG: _____ | QUANTITY: _____ |
| REPRESENTATIVE: _____ | TYPE OF SERVICE: _____ | DATE: _____ |
| ENGINEER: _____ | SUBMITTED BY: _____ | DATE: _____ |
| CONTRACTOR: _____ | APPROVED BY: _____ | DATE: _____ |
| | ORDER NO.: _____ | DATE: _____ |

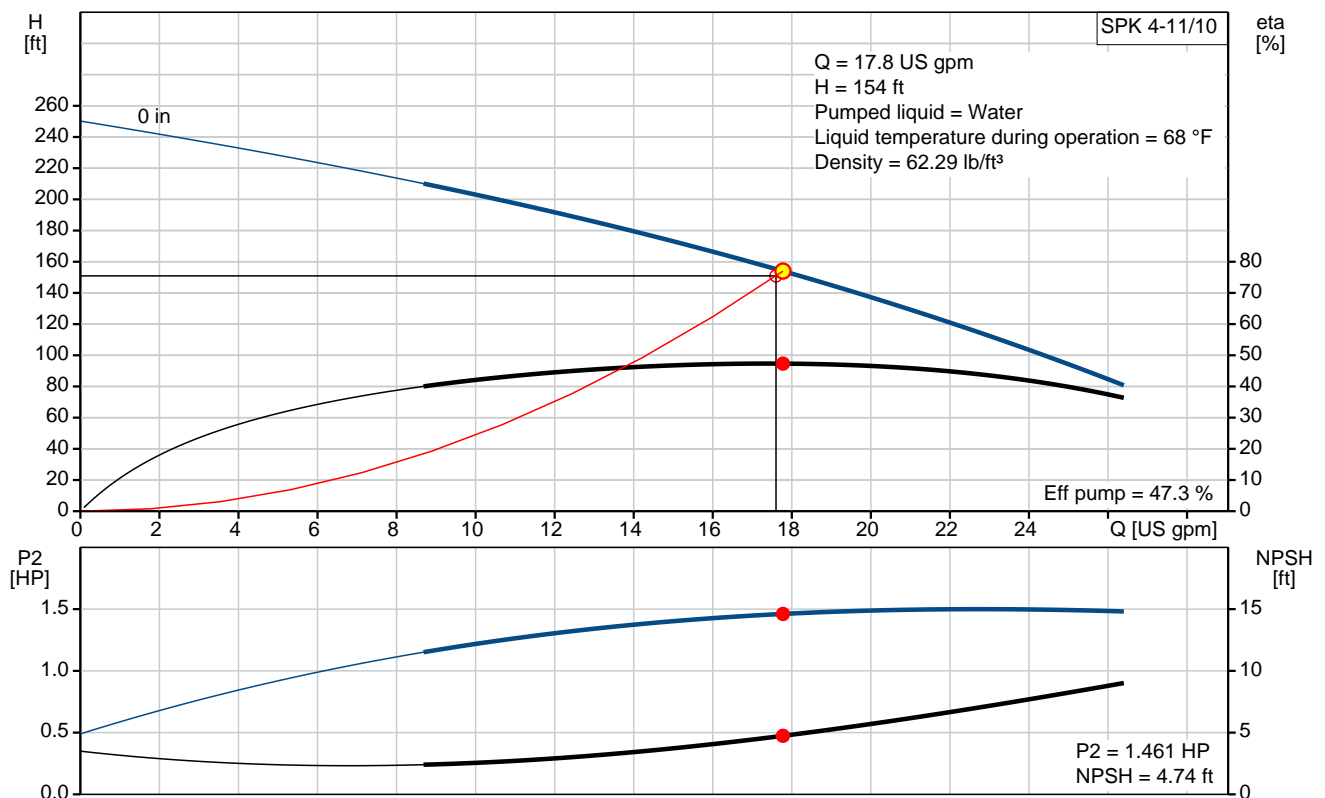


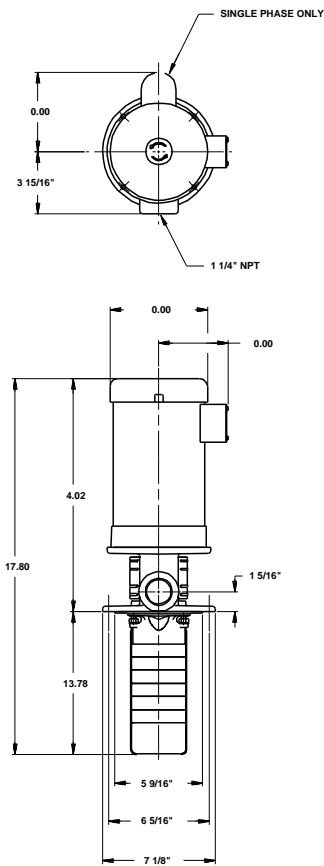
SPK 4-11/10

Coolant and condensate pumps

Product photo could vary from the actual product

| Conditions of Service | | Pump Data | | Motor Data | |
|-----------------------|-------------|---------------------------|--------------|-----------------|-------|
| Flow: | 17.8 US gpm | Liquid temperature range: | 14 .. 194 °F | Main frequency: | 60 Hz |
| Head: | 154 ft | Shaft seal: | AUUV | | |
| Efficiency: | _____ | Pipe connection: | 1 1/4" NPT | | |
| Liquid: | Water | Product number: | 3AG02410 | | |
| Temperature: | 68 °F | | | | |
| NPSH required: | 4.74 ft | | | | |
| Viscosity: | _____ | | | | |
| Specific Gravity: | 1.000 | | | | |





Materials:

Pump head: Cast iron
 EN-GJL-200
 ASTM 25B

Impeller: Stainless steel
 DIN W.-Nr. 1.4301
 AISI 304

Material code: A

Tender Text



Product photo could vary from the actual product

Product No.: [3AG02410](#)

SPK 4-11/10 A-WB-A-AUUV

Multistage, immersible, self-priming, centrifugal pump for vertical and horizontal installation in tanks etc.

The pump has the following characteristics:

- Installation length according to DIN 5440.
- Impellers, intermediate chambers and spline

shaft are made of stainless steel and motor stool of GG 20.

- Mechanical shaft seal according to DIN 24960.
- Power transmission via cast iron

split coupling.

Liquid:

Pumped liquid: Water
Liquid temperature range: 14 .. 194 °F
Liquid temperature during operation: 68 °F
Density: 62.29 lb/ft³

Technical:

Speed for pump data: 3500 rpm
Actual calculated flow: 17.8 US gpm
Resulting head of the pump: 154 ft
Primary shaft seal: AUUV
Curve tolerance: ISO9906:2012 3B
Drain holes: Open drain hole

Materials:

Pump head: Cast iron
EN-GJL-200
ASTM 25B
Impeller: Stainless steel
DIN W.-Nr. 1.4301
AISI 304

Installation:

Pipe connection: 1 1/4" NPT
Flange size for motor: 56C

Others:

Net weight: 17.2 lb



Company name:

Created by:


Phone:

Date:

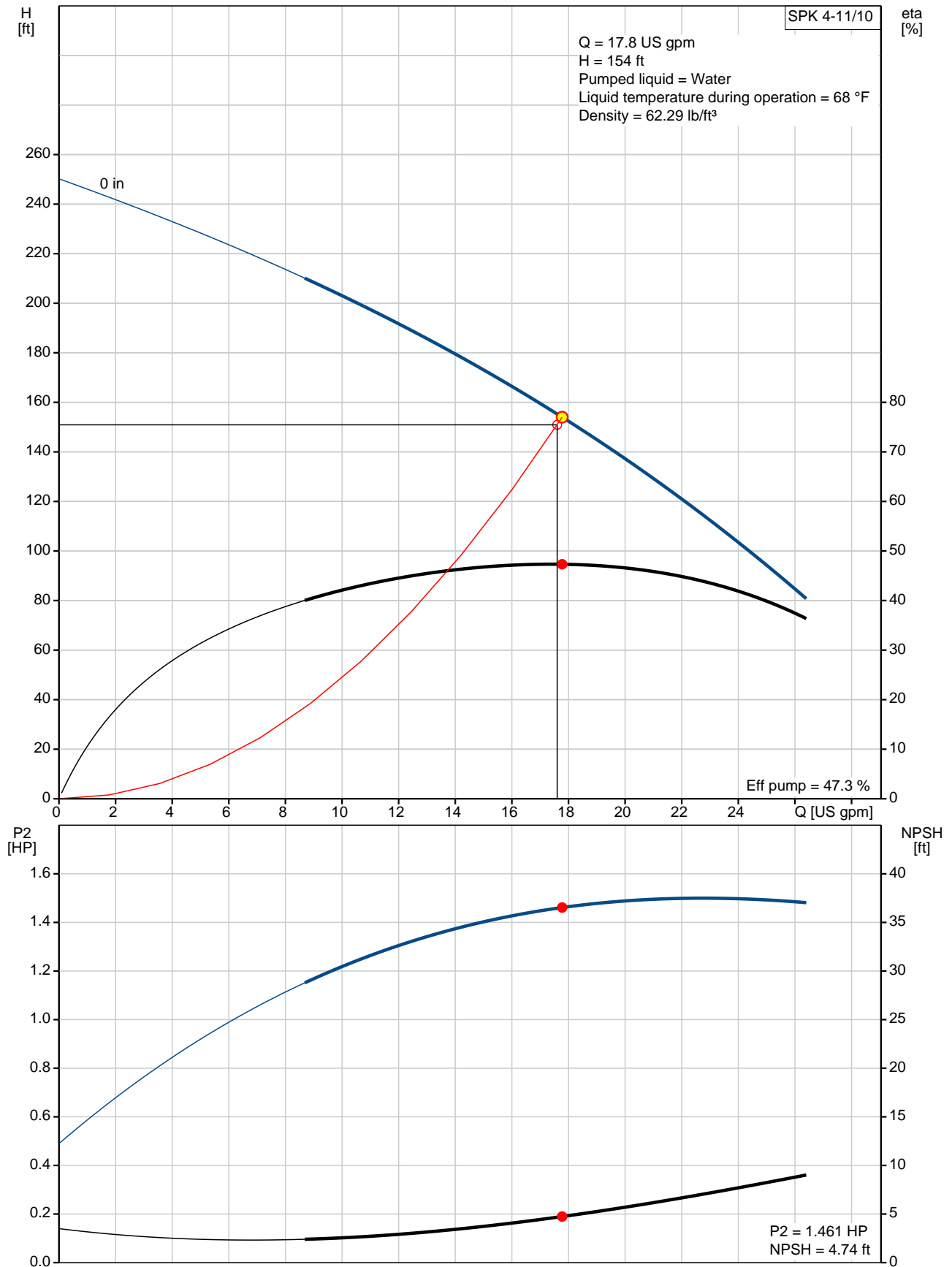
2/21/2018

Gross weight:

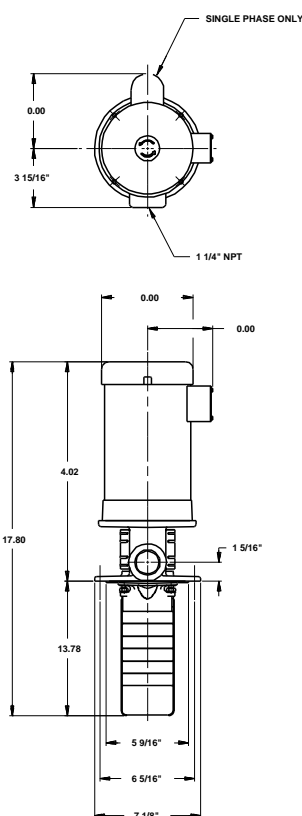
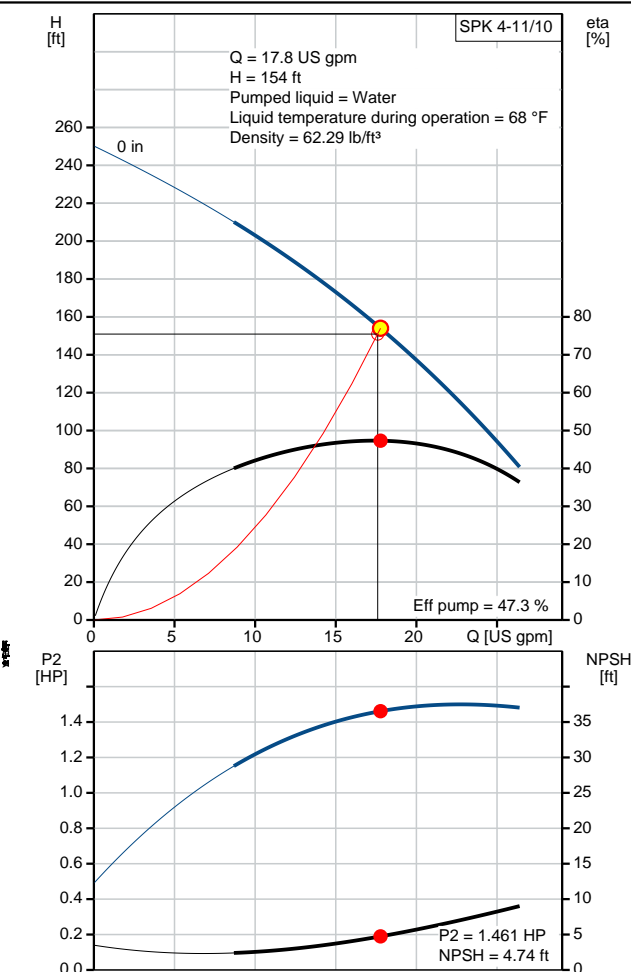
22.3 lb

| Position | Count | Description |
|----------|-------|---|
| | 1 | <p>SPK 4-11/10 A-WB-A-AUUV</p>  <p>Product photo could vary from the actual product</p> <p>Product No.: 3AG02410</p> <p>Multistage, immersible, self-priming, centrifugal pump for vertical and horizontal installation in tanks etc.</p> <p>The pump has the following characteristics:</p> <ul style="list-style-type: none"> - Installation length according to DIN 5440. - Impellers, intermediate chambers and spline shaft are made of stainless steel and motor stool of GG 20. - Mechanical shaft seal according to DIN 24960. - Power transmission via cast iron split coupling. <p>Liquid:</p> <p>Pumped liquid: Water</p> <p>Liquid temperature range: 14 .. 194 °F</p> <p>Liquid temperature during operation: 68 °F</p> <p>Density: 62.29 lb/ft³</p> <p>Technical:</p> <p>Speed for pump data: 3500 rpm</p> <p>Actual calculated flow: 17.8 US gpm</p> <p>Resulting head of the pump: 154 ft</p> <p>Primary shaft seal: AUUV</p> <p>Curve tolerance: ISO9906:2012 3B</p> <p>Drain holes: Open drain hole</p> <p>Materials:</p> <p>Pump head: Cast iron EN-GJL-200 ASTM 25B</p> <p>Impeller: Stainless steel DIN W.-Nr. 1.4301 AISI 304</p> <p>Installation:</p> <p>Pipe connection: 1 1/4" NPT</p> <p>Flange size for motor: 56C</p> <p>Others:</p> <p>Net weight: 17.2 lb</p> <p>Gross weight: 22.3 lb</p> |

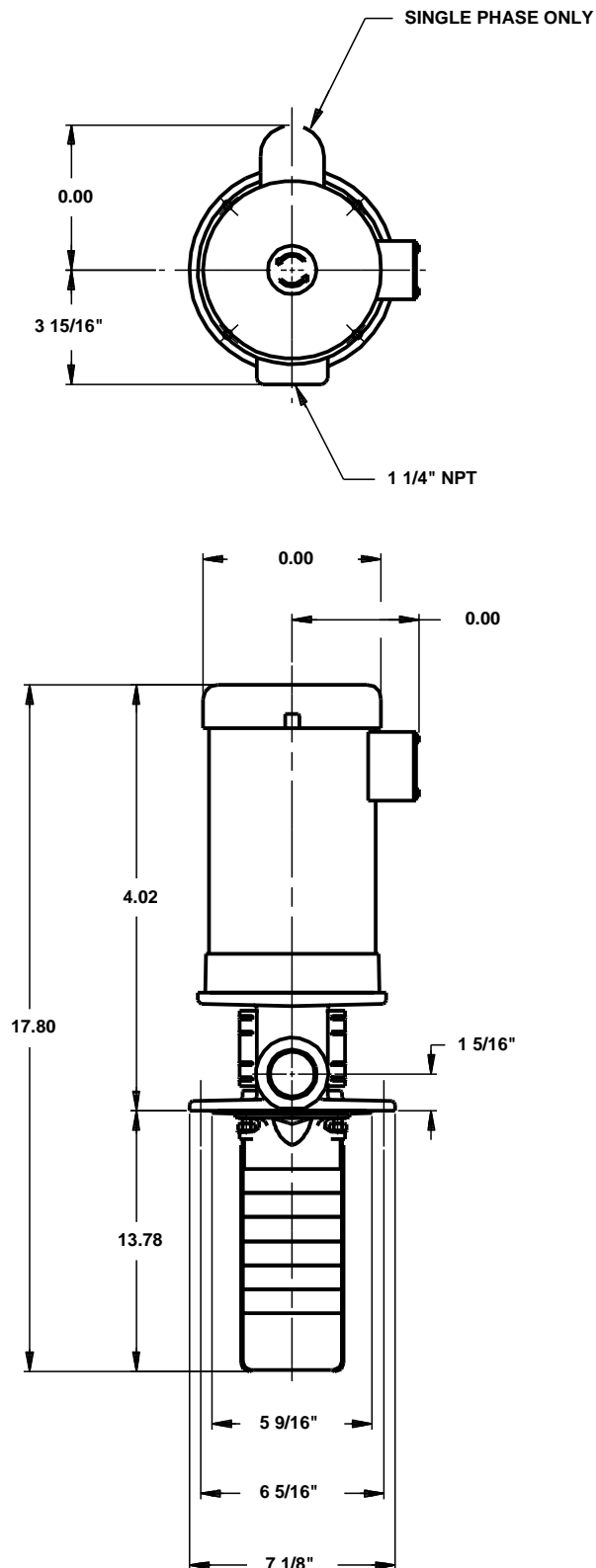
3AG02410 SPK 4-11/10 60 Hz



| Description | Value |
|--------------------------------------|-------------------------|
| General information: | |
| Product name: | SPK 4-11/10 A-WB-A-AUUV |
| Product No.: | 3AG02410 |
| EAN: | 5700391796920 |
| Technical: | |
| Speed for pump data: | 3500 rpm |
| Actual calculated flow: | 17.8 US gpm |
| Resulting head of the pump: | 154 ft |
| Stages: | 11 |
| Impellers: | 10 |
| Primary shaft seal: | AUUV |
| Curve tolerance: | ISO9906:2012 3B |
| Pump version: | A |
| Model: | E |
| Drain holes: | Open drain hole |
| Materials: | |
| Pump head: | Cast iron |
| | EN-GJL-200 |
| | ASTM 25B |
| Impeller: | Stainless steel |
| | DIN W.-Nr. 1.4301 |
| | AISI 304 |
| Material code: | A |
| Installation: | |
| Connect code: | WB |
| Pipe connection: | 1 1/4" NPT |
| Flange size for motor: | 56C |
| Liquid: | |
| Pumped liquid: | Water |
| Liquid temperature range: | 14 .. 194 °F |
| Liquid temperature during operation: | 68 °F |
| Density: | 62.29 lb/ft³ |
| Others: | |
| Net weight: | 17.2 lb |
| Gross weight: | 22.3 lb |



3AG02410 SPK 4-11/10 60 Hz



Note! All units are in [mm] unless otherwise stated.
Disclaimer: This simplified dimensional drawing does not show all details.



Company name:

Created by:

Phone:

Date:

2/21/2018

Order Data:

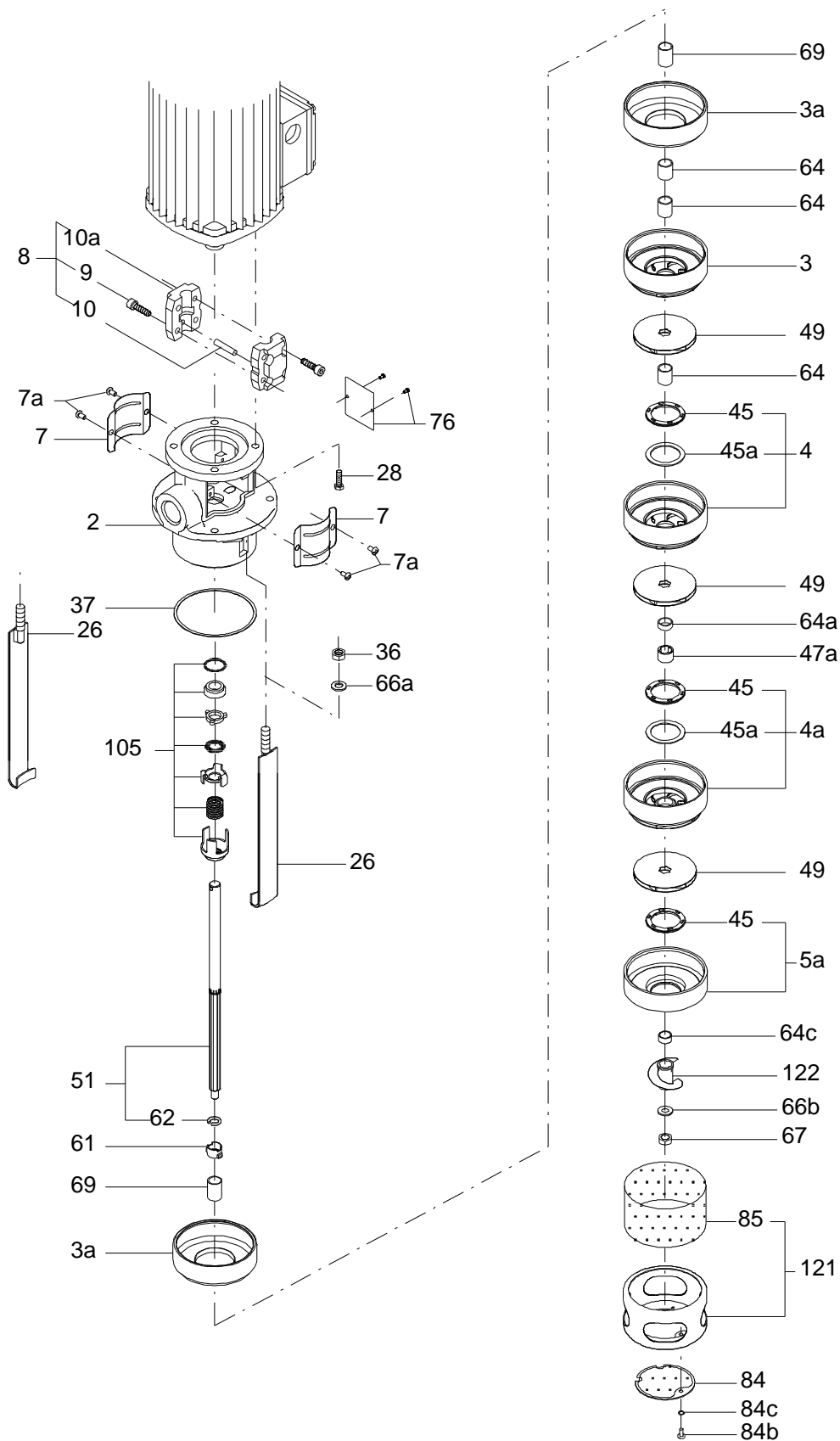
Product name: SPK 4-11/10 A-WB-A-AUUV

Amount: 1

Product No.: 3AG02410

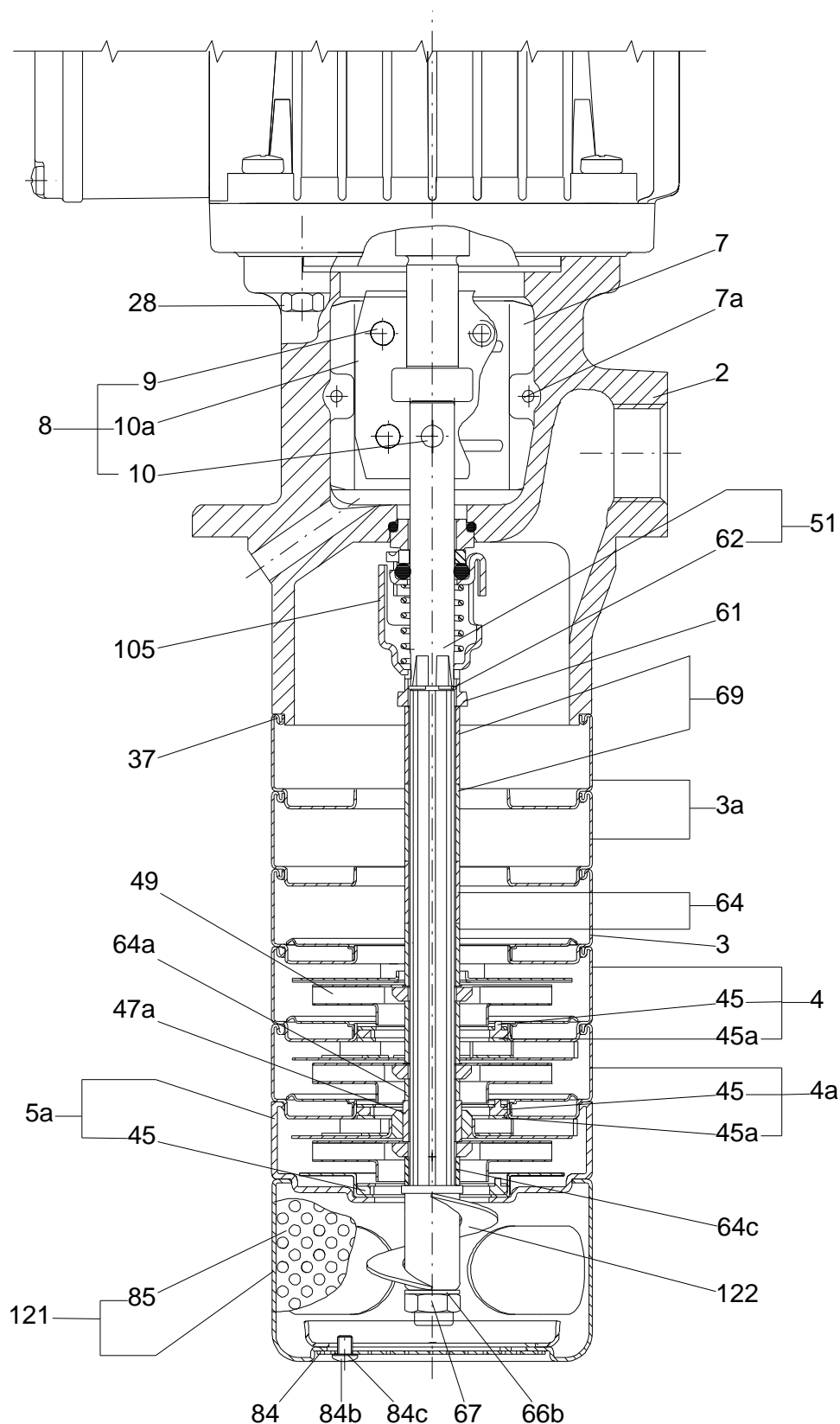
Total: Price on request

Exploded view (tm020109 1901)



TM020109

Sectional drawing (tm020111 1901)



Parts list SPK 4-11/10, Prod number 3AG02410
Valid from 18.11.2014 (1447)

| Position | Description | Annotation | Classification data | Part No. | Count | Unit |
|----------|---------------------------|------------|--|----------|-------|------|
| | Spacer | | | | 1 | pcs |
| 2 | Pump head | | | | 1 | pcs |
| - 3 | Chamber w/o neck ring | | | | 1 | pcs |
| | Guide plate | | | | 1 | |
| | Cover plate | | | | 1 | |
| | Guide vane | | | | 1 | |
| 3a | Chamber w/o guide vanes | | | | 1 | |
| 3a | Chamber w/o guide vanes | | | | 1 | pcs |
| - 4 | Chamber | | | | 8 | pcs |
| - | Chamber w/o neck ring | | | | 1 | |
| | Guide plate | | | | | |
| | Cover plate | | | | | |
| | Guide vane | | | | | |
| 3a | Chamber w/o guide vanes | | | | | |
| 45 | Neck ring | | | | 1 | |
| 45a | Disc | | Inner diameter: 31,0 Outer diameter: 40,7 Thickness: 1,0 | | 1 | |
| - 4a | Chamber | | | | 1 | pcs |
| - | Chamber w/bearing ring | | | | 1 | |
| | Chamber | | | | | |
| | Bearing bush | | | | | |
| 45 | Neck ring | | | | 1 | |
| 45a | Disc | | Inner diameter: 31,0 Outer diameter: 40,7 Thickness: 1,0 | | 1 | |
| - 5a | Chamber cpl. | | | | 1 | pcs |
| 45 | Neck ring | | | | 1 | |
| 7 | Coupling guard | | | | 2 | pcs |
| 7a | Thread cutting screw | | | | 1 | pcs |
| 7a | Thread cutting screw | | | | 4 | pcs |
| 9 | Hex socket head cap screw | | Designation: DIN 912 Length: 20 Thread: M6 | | 4 | pcs |
| 10 | Shaft pin | | Diameter: 5 Length: 26 | | 1 | pcs |
| 10a | Coupling half | | | | 2 | pcs |
| - 26 | Strap cpl. | | | | 2 | pcs |
| | Strap | | | | 1 | |
| | Threaded bush | | | | 1 | |
| 36 | Lock nut | | Thread: M8 | | 2 | pcs |
| 37 | Gasket | | Inner diameter: 80,5 Outer diameter: 87 Thickness: 0,4 | | 1 | pcs |
| 47a | Bearing ring, rotating | | Inner diameter: 13,10 Outer diameter: 15,92 Length: 11,00 Material type: TUNGSTEN CARBIDE | | 1 | pcs |
| 49 | Impeller cpl. | | | | 10 | pcs |
| - 51 | Shaft cpl. | | | | 1 | pcs |
| | Pump shaft | | | | 1 | |
| 62 | Retaining ring | | | | 1 | |
| 61 | Spacer for shaft seal | | | | 1 | pcs |

| Position | Description | Annotation | Classification data | Part No. | Count | Unit |
|----------|-----------------------|------------|---|----------|-------|------|
| 64 | Spacing pipe | | Inner diameter: 12,7 Outer diameter: 15 Length: 16,85 | | 1 | pcs |
| 64 | Spacing pipe | | Length: 20 | | 9 | pcs |
| 64a | Spacing pipe | | Inner diameter: 12,7 Outer diameter: 15 Length: 9,0 | | 2 | pcs |
| 66 | Washer | | | | 2 | pcs |
| 66 | Washer | | Inner diameter: 8,4 Outer diameter: 14,6 Thickness: 0,8 | | 1 | pcs |
| 67 | Lock nut | | Designation: A2 DIN985 Thread: M8 | | 1 | pcs |
| 69 | Spacing pipe | | Inner diameter: 12,7 Outer diameter: 15 Length: 21 | | 1 | pcs |
| 69 | Spacing pipe | | | | 1 | pcs |
| 76 | Nameplate | | | | 1 | pcs |
| 76a | Rivet | | | | 2 | pcs |
| 84 | Strainer | | | | 1 | pcs |
| 84c | Disc spring | | | | 1 | pcs |
| 105 | Shaft seal | | Material type: AUUV | | 1 | pcs |
| - 121 | Holder | | | | 1 | pcs |
| | Retainer for strainer | | | | 1 | |
| 85 | Strainer | | | | 1 | |
| 122 | Priming screw | | | | 1 | pcs |