

## Tender Text



Product photo could vary from the actual product

Product No.: [8010022](#)

### 5S10-22

Multi-stage submersible pump for raw water supply, groundwater lowering and pressure boosting. The pump is suitable for pumping clean, thin, non-aggressive liquids without solid particles or fibers.

The pump is made entirely of Stainless steel DIN W.-Nr. DIN W.-Nr. 1.4301 and suitable for horizontal and vertical installation. The pump is fitted with a built-in non-return valve.

### Liquid:

Pumped liquid:	Water
Maximum liquid temperature:	104 °F
Liquid temperature during operation:	68 °F
Density:	62.29 lb/ft <sup>3</sup>

### Technical:

Speed for pump data:	3450 rpm
Actual calculated flow:	4.81 US gpm
Resulting head of the pump:	439 ft
Curve tolerance:	ISO9906:2012 3B

### Materials:

Pump:	Stainless steel DIN W.-Nr. 1.4301 AISI 304
Impeller:	Stainless steel DIN W.-Nr. 1.4301 AISI 304

### Installation:


Pump outlet:	1"NPT
Motor diameter:	4 inch

### Electrical data:

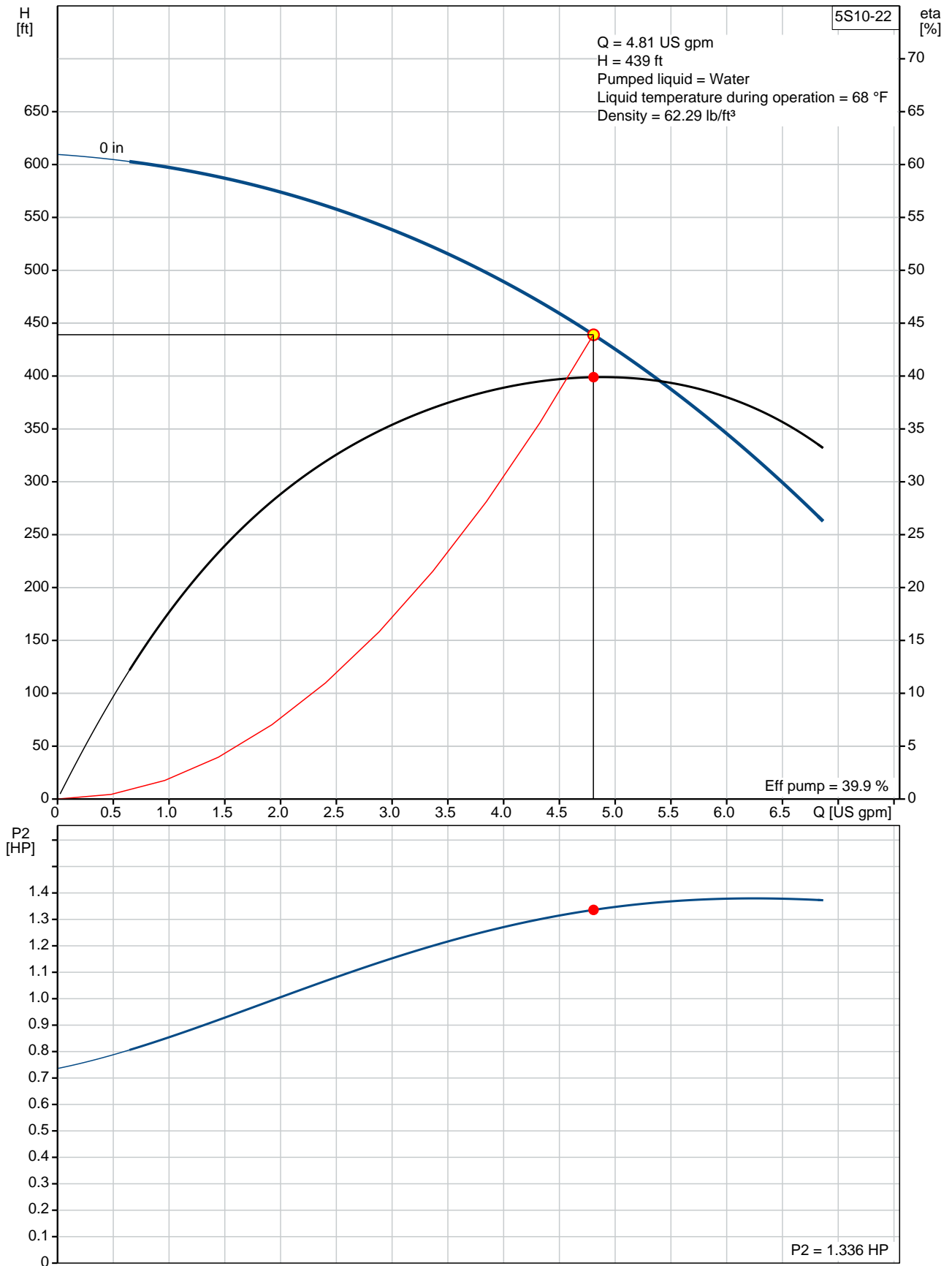
Power (P2) required by pump:	1.395 HP
------------------------------	----------

### Others:

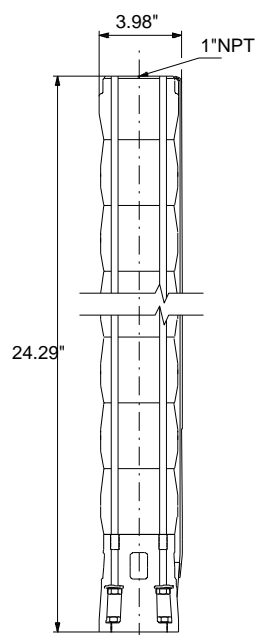
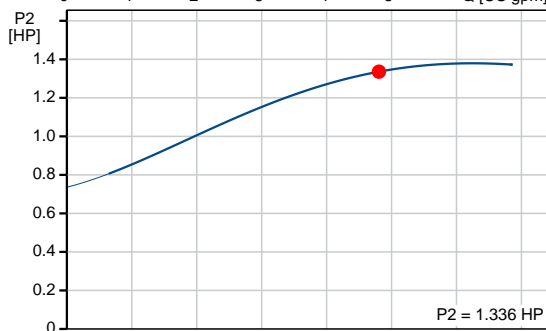
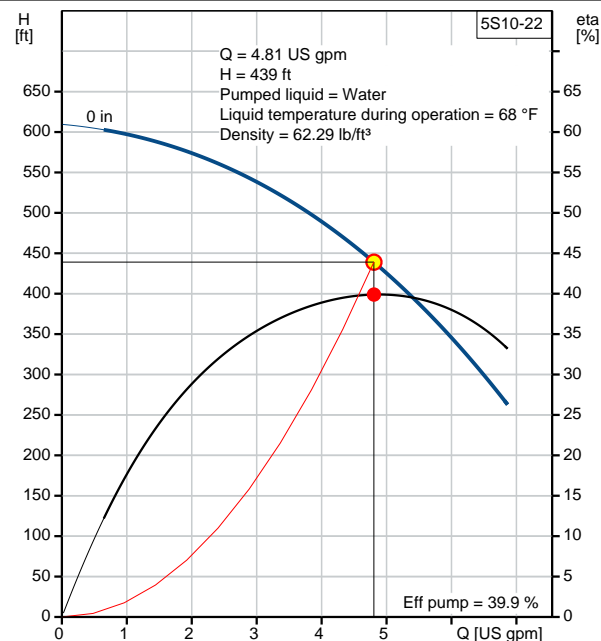
Net weight:	14.3 lb
Gross weight:	16.1 lb

Position	Count	Description
	1	<p><b>5S10-22</b></p>  <p>Product photo could vary from the actual product</p> <p>Product No.: <a href="#">8010022</a></p> <p>Multi-stage submersible pump for raw water supply, groundwater lowering and pressure boosting. The pump is suitable for pumping clean, thin, non-aggressive liquids without solid particles or fibers.</p> <p>The pump is made entirely of Stainless steel DIN W.-Nr. DIN W.-Nr. 1.4301 and suitable for horizontal and vertical installation. The pump is fitted with a built-in non-return valve.</p> <p><b>Liquid:</b></p> <p>Pumped liquid: Water</p> <p>Maximum liquid temperature: 104 °F</p> <p>Liquid temperature during operation: 68 °F</p> <p>Density: 62.29 lb/ft³</p> <p><b>Technical:</b></p> <p>Speed for pump data: 3450 rpm</p> <p>Actual calculated flow: 4.81 US gpm</p> <p>Resulting head of the pump: 439 ft</p> <p>Curve tolerance: ISO9906:2012 3B</p> <p><b>Materials:</b></p> <p>Pump: Stainless steel DIN W.-Nr. 1.4301 AISI 304</p> <p>Impeller: Stainless steel DIN W.-Nr. 1.4301 AISI 304</p> <p><b>Installation:</b></p> <p>Pump outlet: 1"NPT</p> <p>Motor diameter: 4 inch</p> <p><b>Electrical data:</b></p> <p>Power (P2) required by pump: 1.395 HP</p> <p><b>Others:</b></p> <p>Net weight: 14.3 lb</p> <p>Gross weight: 16.1 lb</p>

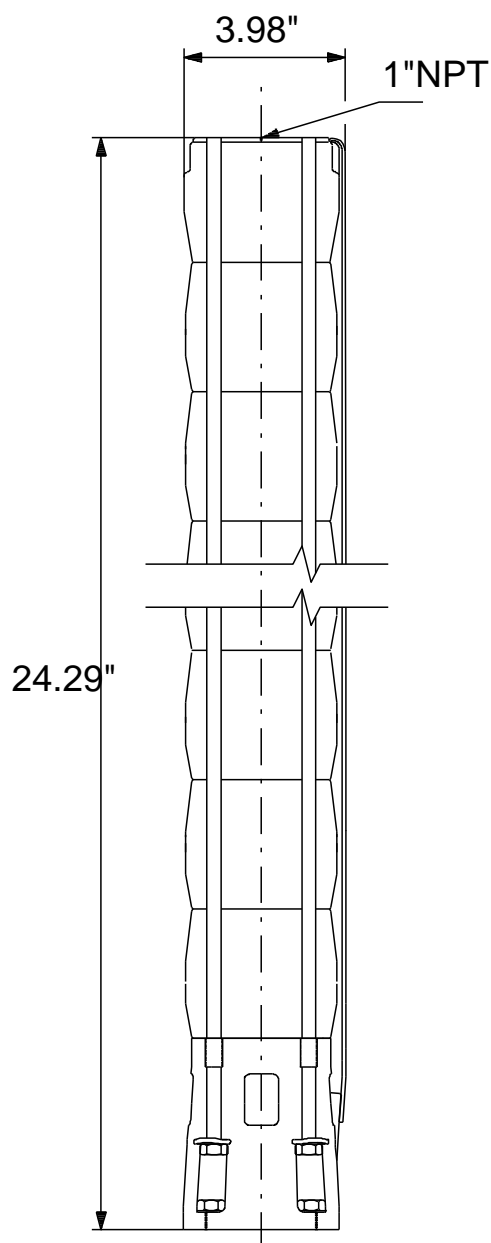
## 8010022 5S10-22 60 Hz



Description	Value
<b>General information:</b>	
Product name:	5S10-22
Product No.:	8010022
EAN:	5700390263225
<b>Technical:</b>	
Speed for pump data:	3450 rpm
Actual calculated flow:	4.81 US gpm
Resulting head of the pump:	439 ft
Stages:	22
Curve tolerance:	ISO9906:2012 3B
Model:	A
Valve:	pump with built-in non-return valve
<b>Materials:</b>	
Pump:	Stainless steel DIN W.-Nr. 1.4301 AISI 304
Impeller:	Stainless steel DIN W.-Nr. 1.4301 AISI 304
<b>Installation:</b>	
Pump outlet:	1"NPT
Motor diameter:	4 inch
<b>Liquid:</b>	
Pumped liquid:	Water
Maximum liquid temperature:	104 °F
Liquid temperature during operation:	68 °F
Density:	62.29 lb/ft³
<b>Electrical data:</b>	
Applic. motor:	NEMA
Power (P2) required by pump:	1.395 HP
<b>Others:</b>	
Net weight:	14.3 lb
Gross weight:	16.1 lb
Sales region:	Namreg



## 8010022 5S10-22 60 Hz



Note! All units are in [mm] unless otherwise stated.  
Disclaimer: This simplified dimensional drawing does not show all details.



Company name:

Created by:

Phone:

Date:

2/22/2018

---

**Order Data:**

Product name: 5S10-22

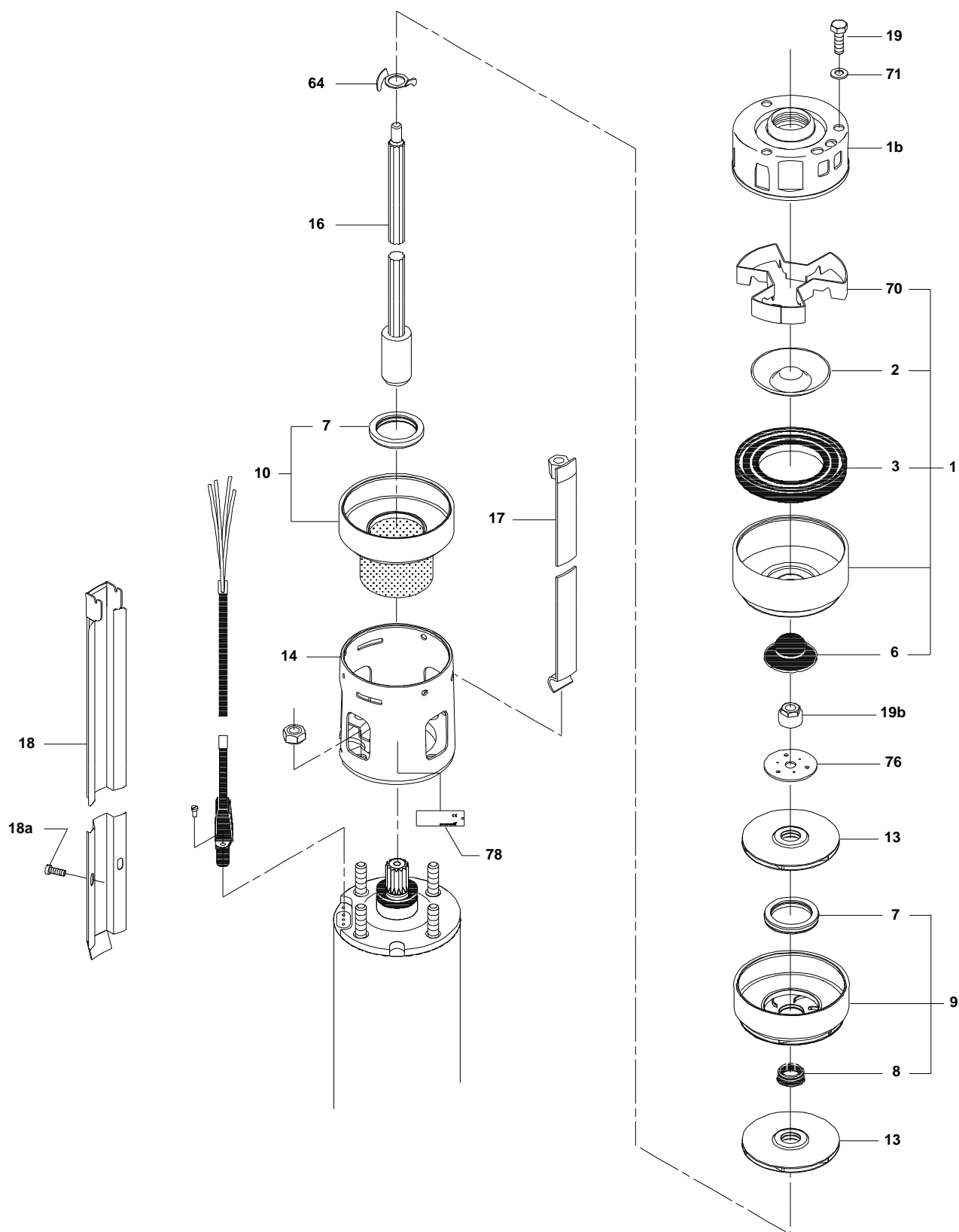
Amount: 1

Product No.: 8010022

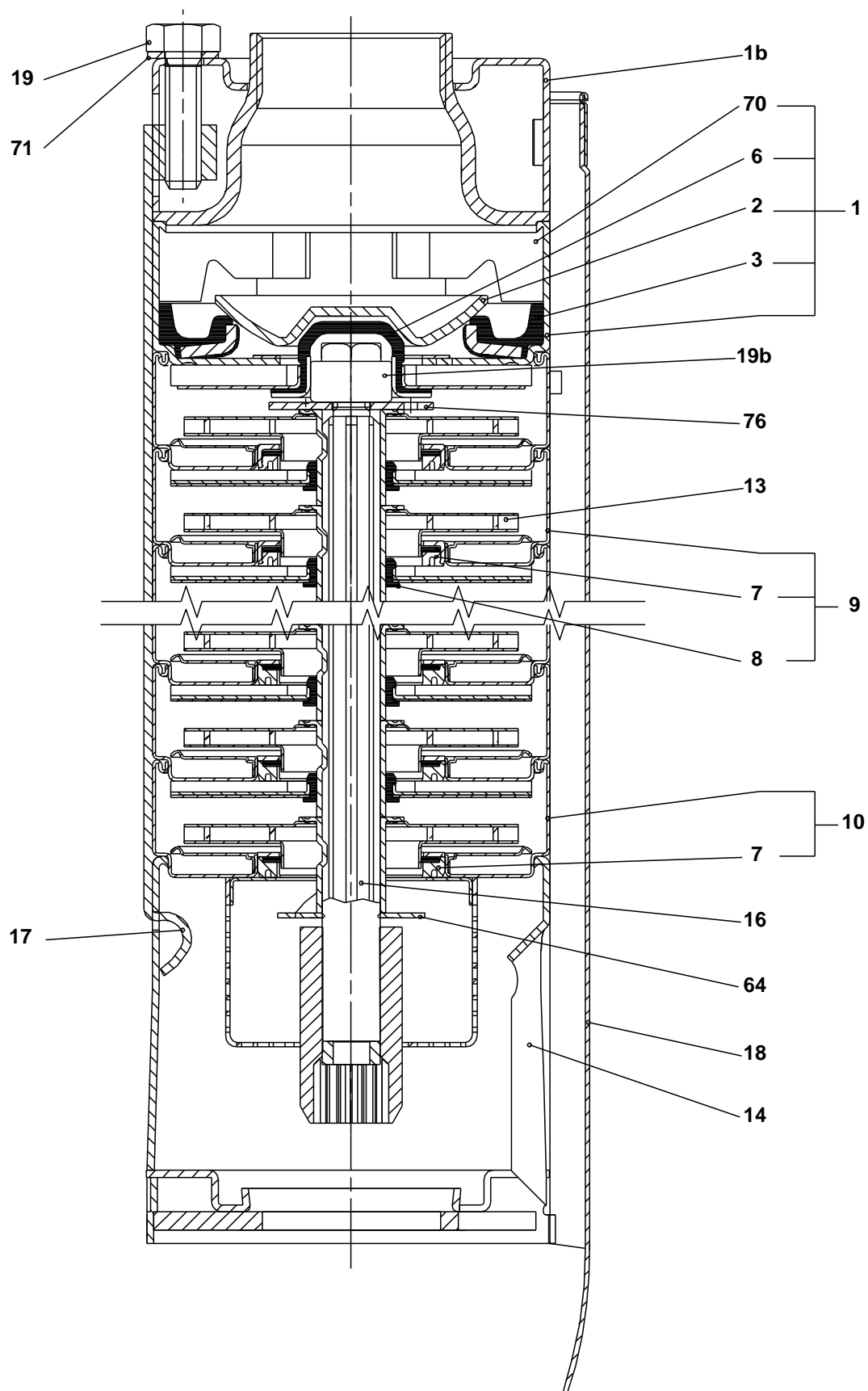
Total: Price on request

---

## Exploded view (tm019315 1600)



## Sectional drawing (tm019325 1600)



TM019325



**Parts list 5S10-22, Prod number 8010022**

**Valid from 1.8.1994 (9432)**

Position	Description	Annotation	Classification data	Part No.	Count	Unit
	Nut				1	pcs
	Impeller				22	pcs
	Washer				1	pcs
-	Chamber				21	pcs
	Chamber w/o guide vanes				1	
	Bearing				1	
7	Neck ring				1	
- 1	Valve casing cpl.				1	pcs
	Valve casing				1	
	Bearing, top				1	
2	Valve cone				1	
3	Valve seat				1	
70	Valve guide				1	
1b	Discharge piece				1	pcs
- 10	Chamber, bottom				1	pcs
	Chamber w/o guide vanes				1	
7	Neck ring				1	
14	Suction interconnector				1	pcs
16	Shaft cpl.		Length: 518,5		1	pcs
17	Strap		Length: 527		3	pcs
18	Cable guard				1	pcs
18a	Pan head screw				2	pcs
19	Screw w/washer				3	pcs
64	Priming disc				1	pcs
76	Nameplate				1	pcs