
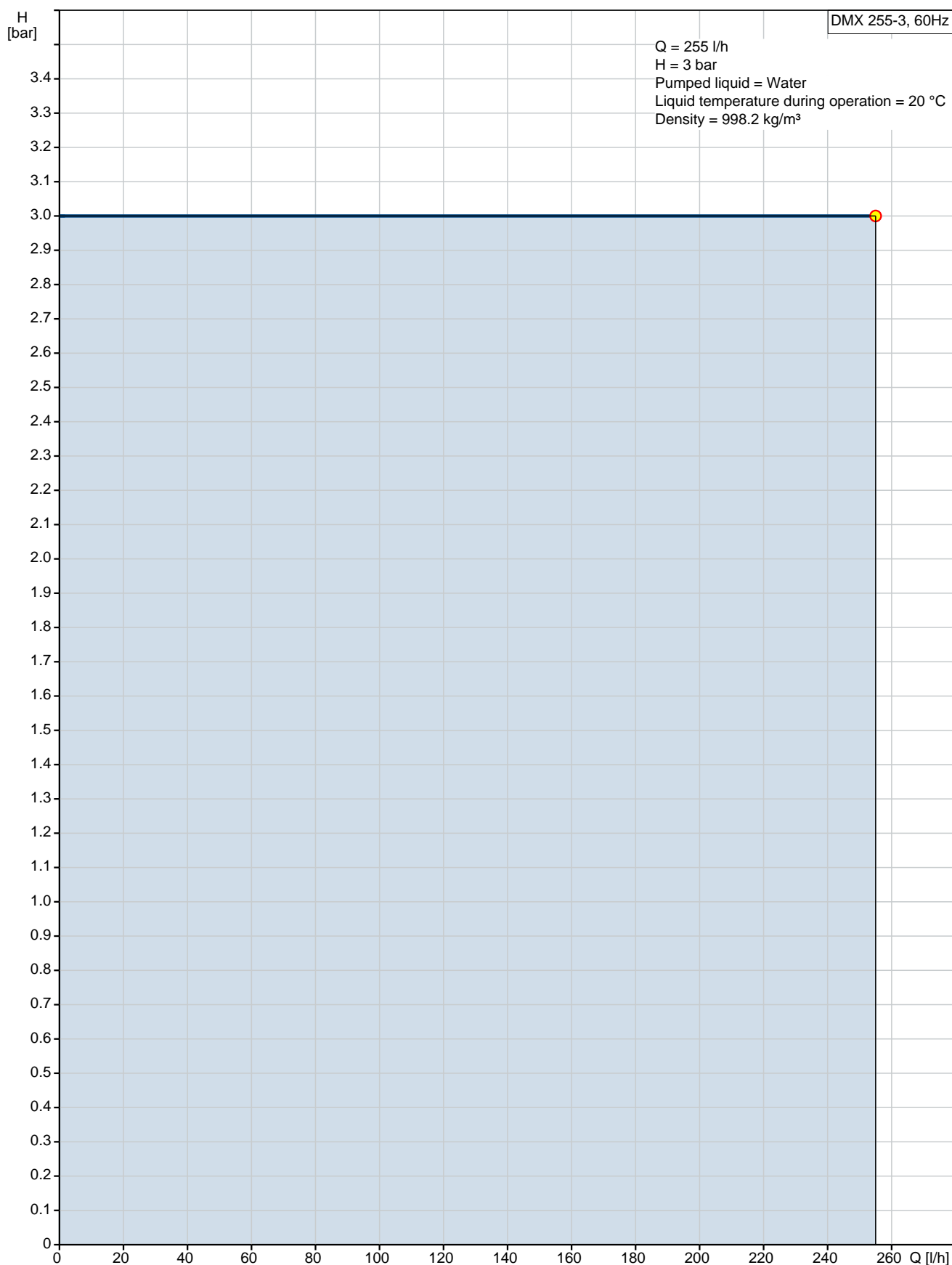


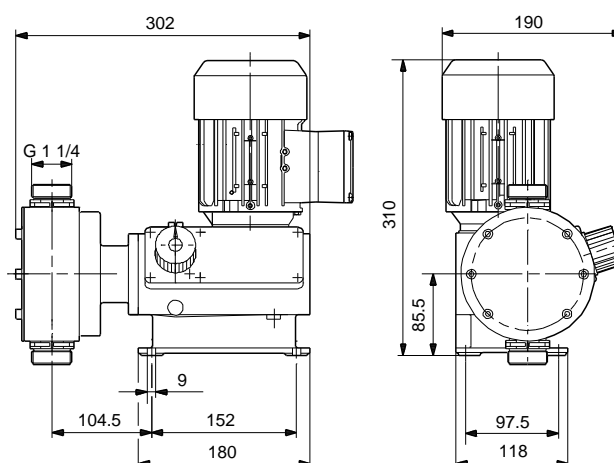
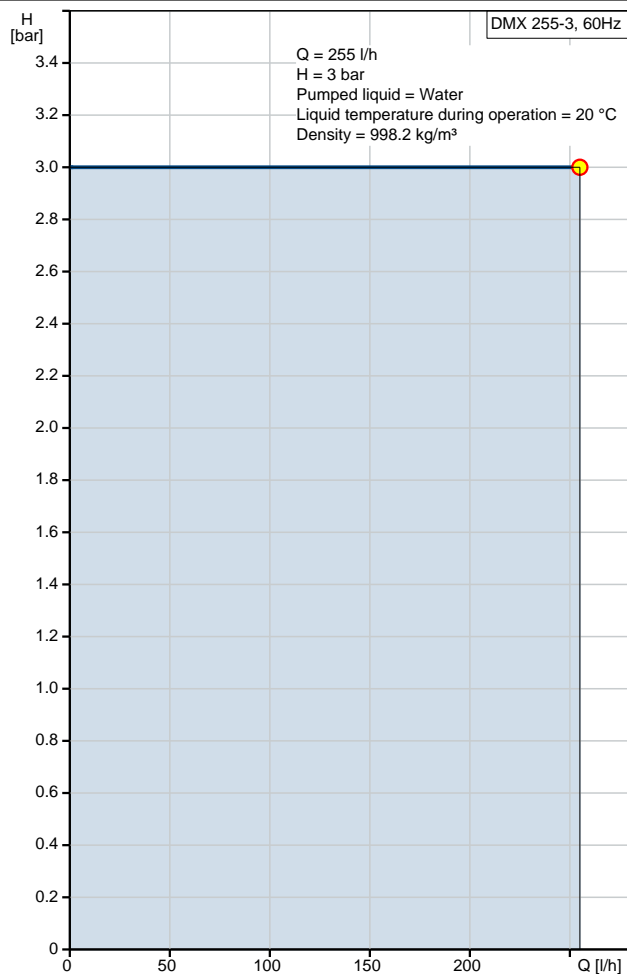
Qty.	Description
1	<p>DMX 255-3</p>  <p>Note! Product picture may differ from actual product</p> <p>Product No.: 91835120</p> <p>The pump of the DMX series is a versatile positive displacement diaphragm dosing pump. The diaphragm is coupled mechanically via a precise gear-eccenter-tapet-system to a high efficiency AC motor. The dosing capacity is adjusted by varying the stroke length at the stroke adjustment knob in the ratio 1:10. The liquid end is composed of:</p> <ul style="list-style-type: none"> - Dosing head - PTFE coated diaphragm - Single ball valves <p>Other features:</p> <ul style="list-style-type: none"> - Robust industrial pump with aluminium enclosure - Easy to install and operate design - Long life PTFE coated diaphragm - Optimum capacity and stroke frequency graduation - Dosing flow variation < $\pm 1.5\%$, linearity > $\pm 4\%$ <p>Applies only to pumps with: ATEX certification</p> <p>The dosing pump DMX 226 is certified according to the ATEX guideline RL 94/9/EC for non-electrical operating supplies.</p> <p>The motor versions EEx e and EEx d defined by Grundfos/Alldos are certified by the manufacturers according to ATEX guidelines for electrical operating supplies. The motor type plate is labelled according to ATEX.</p> <p>Electronics features:</p> <p>Applies only to pumps with control variant: AR</p> <p>Etron Profi microprocessor electronics, direct attached to motor:</p> <ul style="list-style-type: none"> - Stroke frequency adjustable from 1 stroke/min to maximum stroke frequency - Pulse control with multiplier and divisor - Analogue signal control 0/4-20 mA - Level control with input for two level signals. - Pulse, analogue and remote on/off input - Analogue output - Alarm relay output <p>-Stroke output</p> <p>-Input for dosing controller and diaphragm monitoring sensor</p> <p>Applies only to pumps with control variant: AT0</p> <ul style="list-style-type: none"> - Automatic adjustment of stroke length via direct drive control or mA-input signal - Block-proof synchronous motor with feedback potentiometer - Two limit switches - For further specifications please refer to servomotor <p>Controls:</p> <p>Control variant: AR</p> <p>Level control: YES</p>

Qty.	Description
	<p>Analog input: 0/4-20 MA</p> <p>Pulse control: YES</p> <p>Ext. Stop input: YES</p> <p>Analog output: 0/420 mA</p> <p>Output relays: 2</p> <p>Liquid:</p> <p>Pumped liquid: Water</p> <p>Selected liquid temperature: 20 °C</p> <p>Density at selected liquid temperature: 998.2 kg/m³</p> <p>Technical:</p> <p>Type key: DMX 255-3 AR-PVC/V/G-S-H1A7A7B</p> <p>Approvals on nameplate: CE</p> <p>Valve type: Not spring-loaded</p> <p>Maximum viscosity at 100 %: N.A. mPas</p> <p>Materials:</p> <p>Dosing head: PVC</p> <p>Valve ball: Glass</p> <p>Gasket: FKM</p> <p>Installation:</p> <p>Maximum operating pressure: 3 bar</p> <p>Pump inlet: Threaded NPT 3/4 male</p> <p>Pump outlet: Threaded NPT 3/4 male</p> <p>Max. Suction lift during operation: N.A. m</p> <p>Electrical data:</p> <p>Power input - P1: 0,180 kW</p> <p>Mains frequency: 60 Hz</p> <p>Rated voltage: 1 x 115 V, 60 Hz</p> <p>Enclosure class (IEC 34-5): IP 65/F</p> <p>Type of cable plug: USA, Canada</p> <p>Mains cable: 2.00 m</p>

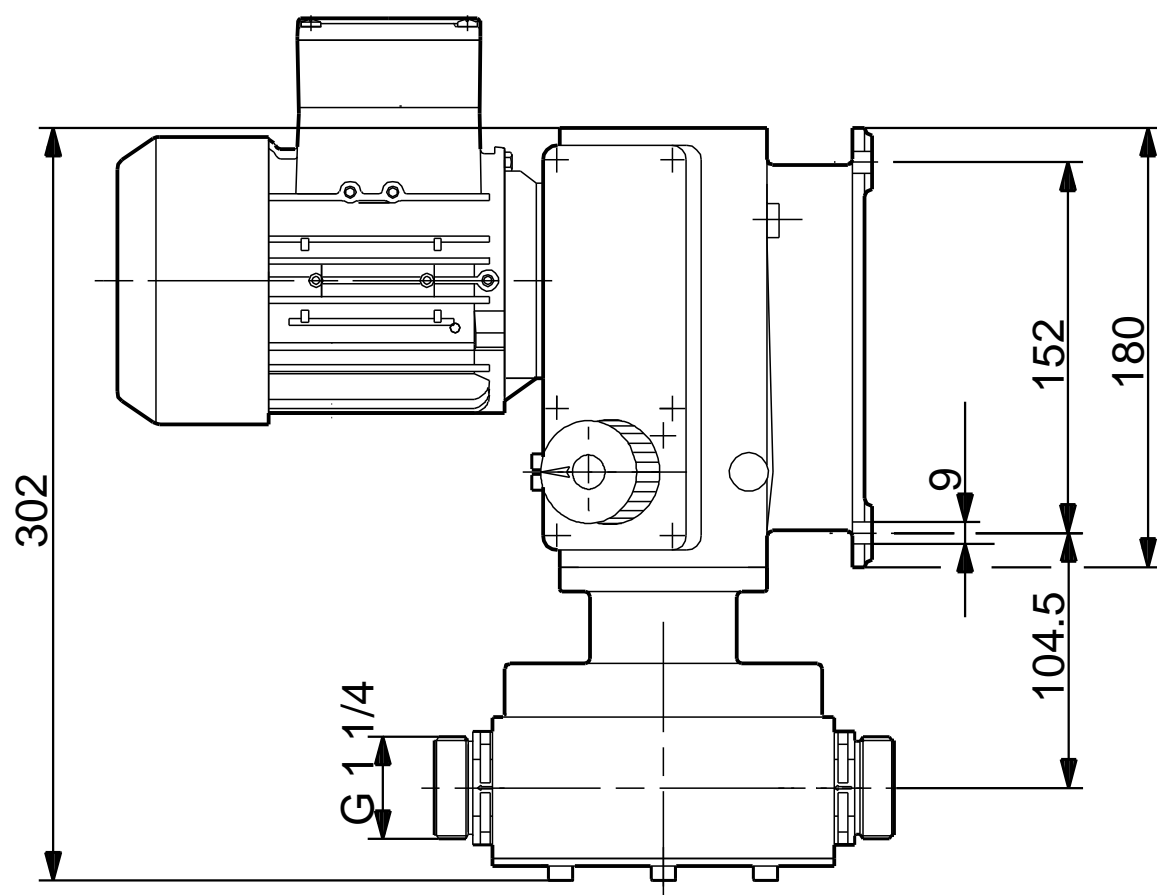
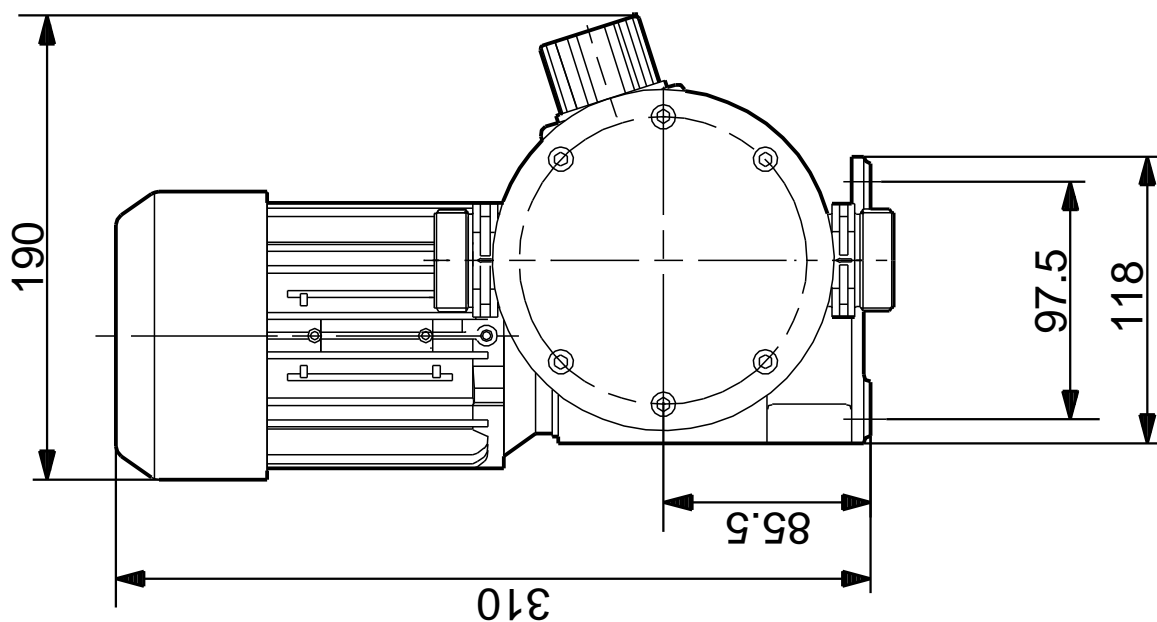
91835120 DMX 255-3 60 Hz



Description	Value
General information:	
Product name:	DMX 255-3
Product No:	91835120
EAN number:	5700834773747
Technical:	
Type key:	DMX 255-3 AR-PVC/V/G-S-H1A7A7B
Max stroke rate:	60 1/min
Max. capacity:	306 l/h
Approvals on nameplate:	CE
Valve type:	Not spring-loaded
Maximum viscosity at 100 %:	N.A. mPas
Materials:	
Dosing head:	PVC
Valve ball:	Glass
Gasket:	FKM
Installation:	
Maximum operating pressure:	3 bar
Pump inlet:	Threaded NPT 3/4 male
Pump outlet:	Threaded NPT 3/4 male
Max. Suction lift during operation:	N.A. m
Liquid:	
Pumped liquid:	Water
Selected liquid temperature:	20 °C
Density at selected liquid temperature:	998.2 kg/m ³
Electrical data:	
Power input - P1:	0,180 kW
Mains frequency:	60 Hz
Rated voltage:	1 x 115 V, 60 Hz
Enclosure class (IEC 34-5):	IP 65/F
Type of cable plug:	USA, Canada
Mains cable:	2.00 m
Controls:	
Control variant:	AR
Stroke control:	manual
Control panel:	Same side as adjustment knob
Level control:	YES
Analog input:	0/4-20 MA
Pulse control:	YES
Ext. Stop input:	YES
Analog output:	0/420 mA
Pulse control:	YES
Other in/output:	Alarm and stroke relay
Output relays:	2
Others:	
Flow rate adjustment:	manual
Leak detection:	NO
Grundfos Alldos PN:	226-255M-10030



91835120 DMX 255-3 60 Hz



Note! All units are in [mm] unless others are stated.
Disclaimer: This simplified dimensional drawing does not show all details.



Company name:

Created by:

Phone:

Date:

03/05/2019

Order Data:

Product name: DMX 255-3

Amount: 1

Product No: 91835120

Total: Price on request
