

PROJECT:	_____	UNIT TAG:	_____	QUANTITY:	_____
REPRESENTATIVE:	_____	TYPE OF SERVICE:	_____	DATE:	_____
ENGINEER:	_____	SUBMITTED BY:	_____	DATE:	_____
CONTRACTOR:	_____	APPROVED BY:	_____	DATE:	_____
	_____	ORDER NO.:	_____	DATE:	_____

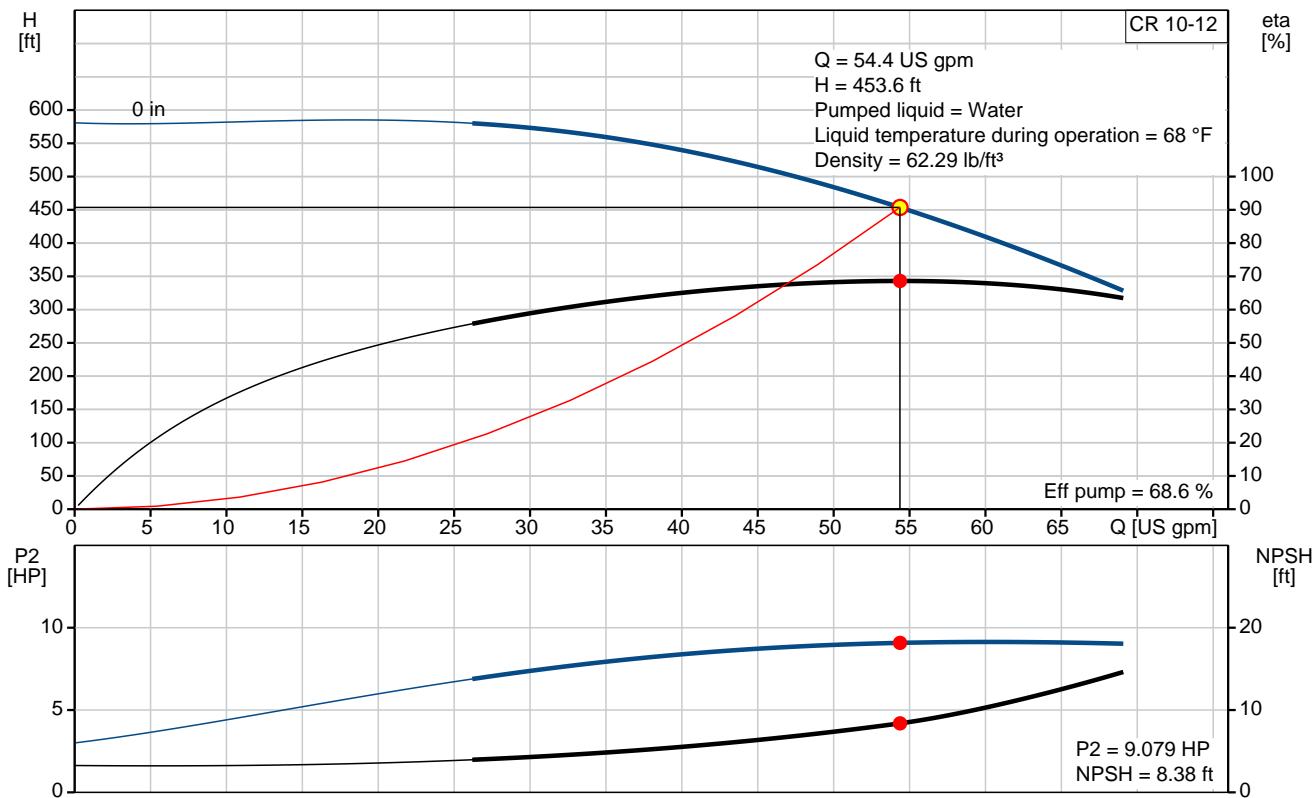


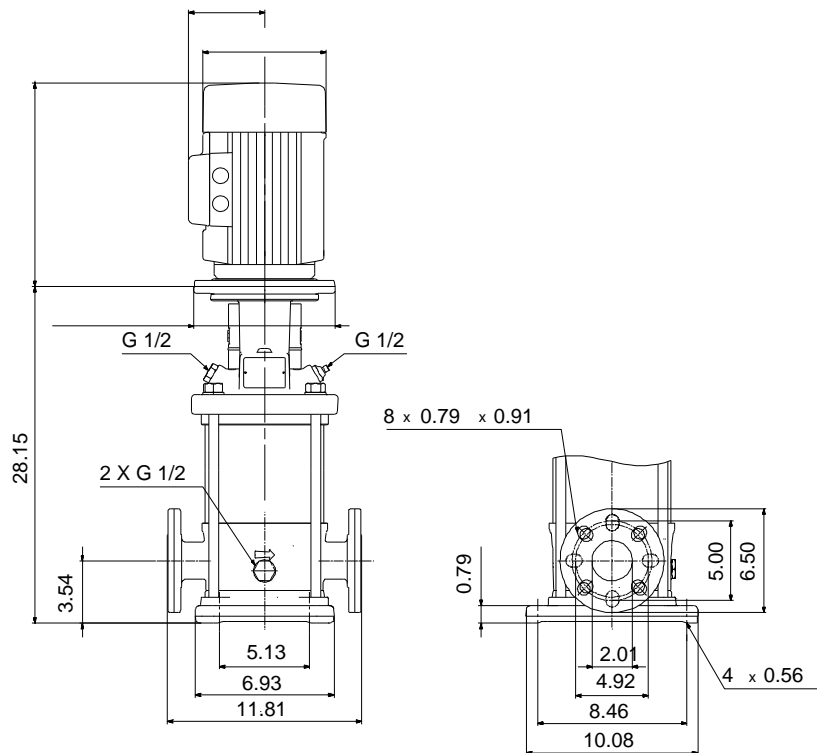
Product photo could vary from the actual product

CR 10-12

Vertical, multistage centrifugal pump with suction and discharge ports on the same level. The pump head and base are in cast iron. All other wetted parts are in stainless steel (EN 1.4301)(AISI 304)

Conditions of Service		Pump Data		Motor Data
Flow:	54.4 US gpm	Max pressure at stated temperature:	363 psi / 250 °F	Main frequency: 60 Hz
Head:	453.6 ft	Shaft seal:	HQQE	
Efficiency:	_____	Product number:	96126740	
Liquid:	Water			
Temperature:	68 °F			
NPSH required:	8.38 ft			
Viscosity:	_____			
Specific Gravity:	1.000			





Materials:

Base:	Cast iron EN 1561 EN-GJL-200 ASTM A48-25B
Impeller:	Stainless steel AISI 304 EN 1.4301
Material code:	A
Code for rubber:	E

Tender Text



Product photo could vary from the actual product

Product No.: [96126740](#)

CR 10-12 A-GJ-A-E-HQQE

Vertical, non-self-priming, multistage, in-line, centrifugal pump for installation in pipe systems and mounting on a foundation.

The pump has the following characteristics:

- Impellers and intermediate chambers are made of
- The shaft seal has assembly length according to EN 12756.
- Power transmission is via cast iron split coupling.

Controls:

Frequency converter: NONE

Liquid:

Pumped liquid: Water

Liquid temperature during operation: 68 °F

Density: 62.29 lb/ft³

Technical:

Speed for pump data: 3470 rpm

Actual calculated flow: 54.4 US gpm

Resulting head of the pump: 453.6 ft

Pump orientation: Vertical

Shaft seal arrangement: Single

Code for shaft seal: HQQE

Curve tolerance: ISO9906:2012 3B

Materials:

Base: Cast iron
EN 1561 EN-GJL-200
ASTM A48-25B

Impeller: Stainless steel
EN 1.4301
AISI 304

Bearing material: SIC

Installation:

Max pressure at stated temperature: 363 psi / 250 °F
363 psi / -4 °F



Company name:

Created by:

Phone:

Date:

2/20/2018


Type of connection:	ANSI / JIS
Size of inlet connection:	DN 50
Size of suction port:	2 inch
Size of outlet connection:	DN 50
Size of outlet port:	2 inch
Pressure rating:	PN 25
Flange size for motor:	213TC
Flange rating inlet:	300 lb

Electrical data:

Motor standard:	NEMA
-----------------	------

Others:

Net weight:	112 lb
Gross weight:	198 lb
Shipping volume:	6.11 ft ³

Position	Count	Description
	1	<p>CR 10-12 A-GJ-A-E-HQQE</p>  <p>Product photo could vary from the actual product</p> <p>Product No.: 96126740</p> <p>Vertical, non-self-priming, multistage, in-line, centrifugal pump for installation in pipe systems and mounting on a foundation.</p> <p>The pump has the following characteristics:</p> <ul style="list-style-type: none"> - Impellers and intermediate chambers are made of - The shaft seal has assembly length according to EN 12756. - Power transmission is via cast iron split coupling. <p>Controls:</p> <p>Frequency converter: NONE</p> <p>Liquid:</p> <p>Pumped liquid: Water</p> <p>Liquid temperature during operation: 68 °F</p> <p>Density: 62.29 lb/ft³</p> <p>Technical:</p> <p>Speed for pump data: 3470 rpm</p> <p>Actual calculated flow: 54.4 US gpm</p> <p>Resulting head of the pump: 453.6 ft</p> <p>Pump orientation: Vertical</p> <p>Shaft seal arrangement: Single</p> <p>Code for shaft seal: HQQE</p> <p>Curve tolerance: ISO9906:2012 3B</p> <p>Materials:</p> <p>Base: Cast iron EN 1561 EN-GJL-200 ASTM A48-25B</p> <p>Impeller: Stainless steel EN 1.4301 AISI 304</p> <p>Bearing material: SIC</p> <p>Installation:</p> <p>Max pressure at stated temperature: 363 psi / 250 °F 363 psi / -4 °F</p> <p>Type of connection: ANSI / JIS</p> <p>Size of inlet connection: DN 50</p>



Company name:

Created by:

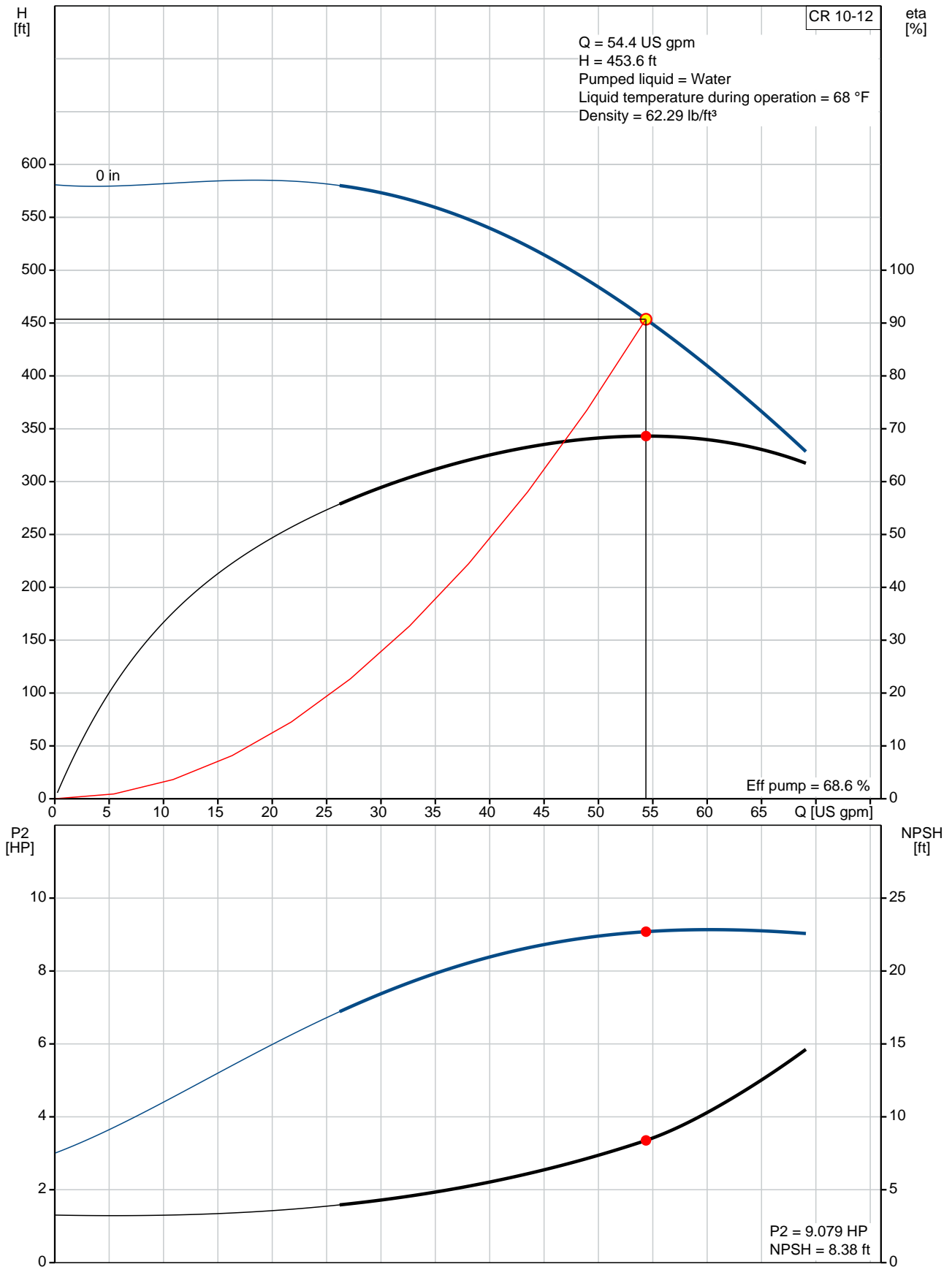
Phone:

Date:

2/20/2018

Position	Count	Description
		Size of suction port: 2 inch Size of outlet connection: DN 50 Size of outlet port: 2 inch Pressure rating: PN 25 Flange size for motor: 213TC Flange rating inlet: 300 lb Electrical data: Motor standard: NEMA Others: Net weight: 112 lb Gross weight: 198 lb Shipping volume: 6.11 ft ³

96126740 CR 10-12 60 Hz



Company name:

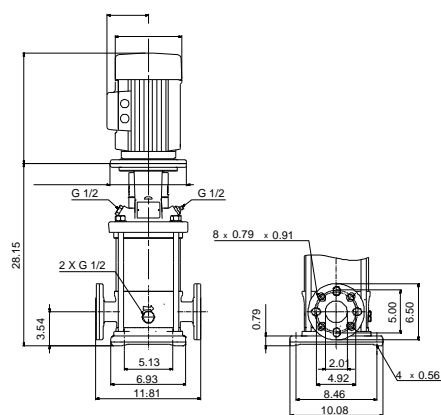
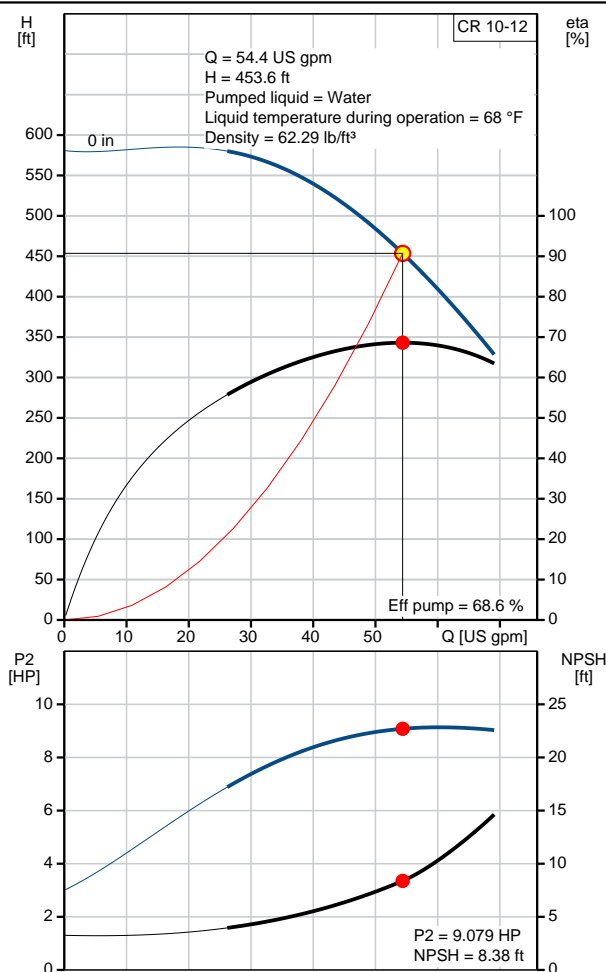
Created by:

Phone:

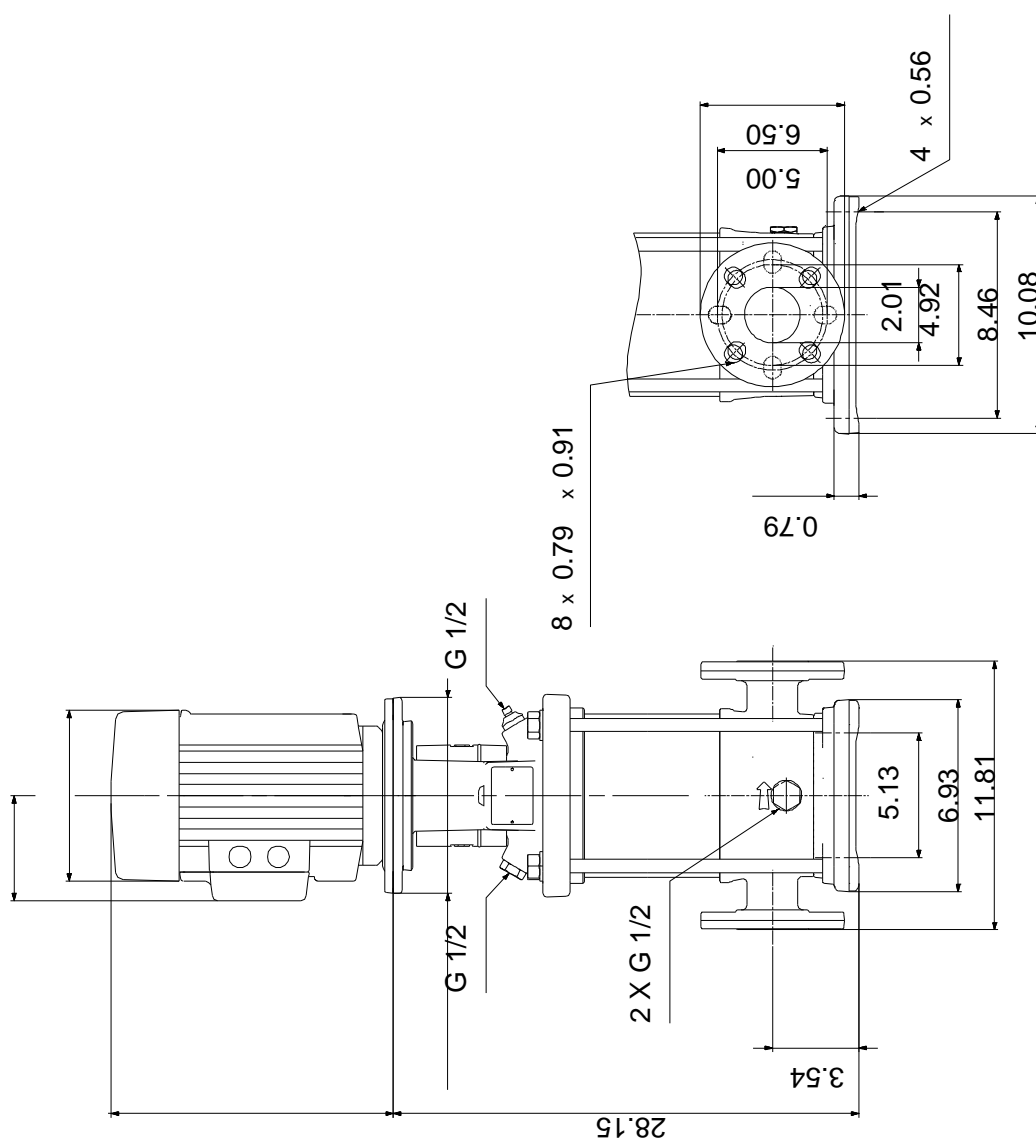
Date:

2/20/2018

Description	Value
General information:	
Product name:	CR 10-12 A-GJ-A-E-HQQE
Product No.:	96126740
EAN:	5700396970219
Technical:	
Speed for pump data:	3470 rpm
Actual calculated flow:	54.4 US gpm
Resulting head of the pump:	453.6 ft
Stages:	12
Impellers:	12
Low NPSH:	N
Pump orientation:	Vertical
Shaft seal arrangement:	Single
Code for shaft seal:	HQQE
Curve tolerance:	ISO9906:2012 3B
Pump version:	A
Model:	A
Materials:	
Base:	Cast iron
	EN 1561 EN-GJL-200
	ASTM A48-25B
Impeller:	Stainless steel
	EN 1.4301
	AISI 304
Material code:	A
Code for rubber:	E
Bearing material:	SIC
Installation:	
Max pressure at stated temperature:	363 psi / 250 °F
	363 psi / -4 °F
Type of connection:	ANSI / JIS
Connect code:	GJ
Size of inlet connection:	DN 50
Size of suction port:	2 inch
Size of outlet connection:	DN 50
Size of outlet port:	2 inch
Pressure rating:	PN 25
Flange size for motor:	213TC
Flange rating inlet:	300 lb
Liquid:	
Pumped liquid:	Water
Liquid temperature during operation:	68 °F
Density:	62.29 lb/ft³
Electrical data:	
Motor standard:	NEMA
Controls:	
Frequency converter:	NONE
Others:	
Net weight:	112 lb
Gross weight:	198 lb
Shipping volume:	6.11 ft³



96126740 CR 10-12 60 Hz



Note! All units are in [mm] unless otherwise stated.
Disclaimer: This simplified dimensional drawing does not show all details.



Company name:

Created by:

Phone:

Date:

2/20/2018

Order Data:

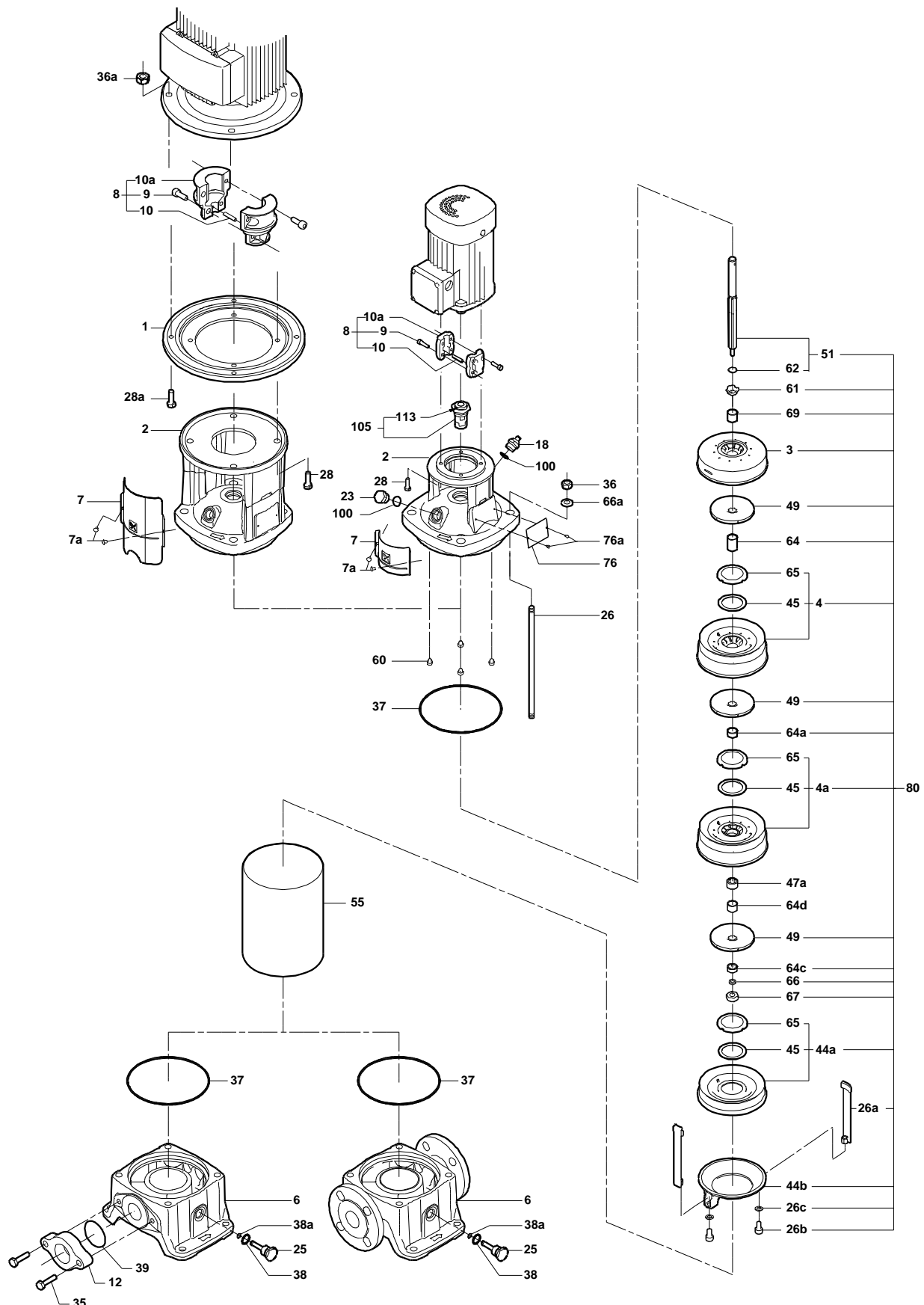
Product name: CR 10-12 A-GJ-A-E-HQQE

Amount: 1

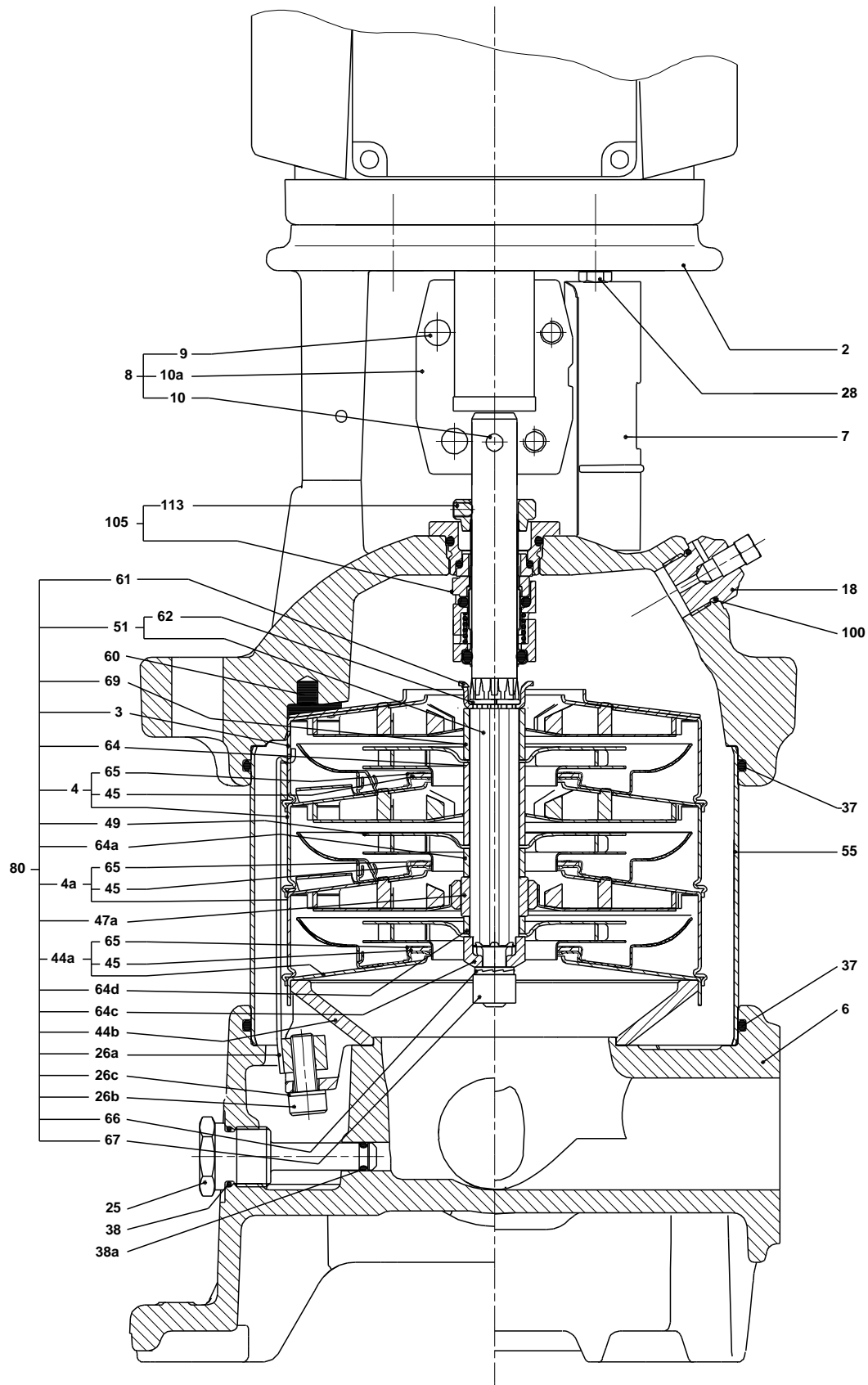
Product No.: 96126740

Total: Price on request

Exploded view



Sectional drawing



Parts list CR 10-12, Prod number 96126740

Valid from 1.1.2004 (0401)

Position	Description	Annotation	Classification data	Part No.	Count	Unit
+	Base cpl.				1	pcs
	Hex head screw				1	pcs
-	Pump head cpl.				1	pcs
1	Flange cpl.				4	
2	Pump head				1	
7	Coupling guard				2	
7.a	Thread cutting screw				4	
- 18	Air vent screw				1	
	Plug					
	Spindle					
23	Pipe plug				1	
	Shaft end				1	pcs
	Bar				1	pcs
-	Rubber module				1	pcs
20	Spring				4	
37	O-ring				2	
38	O-ring		Diameter: 16,3		1	
			Material type: EPDM			
			Thickness: 2,4			
38a	O-ring		Diameter: 5,3		1	
			Material type: EPDM			
			Thickness: 2,4			
100	O-ring		Diameter: 16,3		2	
			Material type: EPDM			
			Thickness: 2,4			
+ 8	Coupling		Dimension: D35/D16		1	pcs
26	Staybolt				4	pcs
36	Hex nut				2	pcs
36	Hex nut		Thread: M16		4	pcs
55	Outer sleeve				1	pcs
66a	Washer		Designation: DIN 125 A		4	pcs
			Inner diameter: 17			
			Outer diameter: 30			
			Thickness: 3			
- 80	Chamber stack		Bearing type: SIC		1	pcs
-	Intermediate chamber cpl.				1	
	Guide vane					
3	Top intermediate chamber					
- 4	Intermediate chamber cpl.				9	
	Guide vane					
	Guide cup					
3a	Intermediate chamber					
45	Neck ring cpl.					
65	Retainer					
+ 4a	Intermediate chamber cpl.				2	
26.b	Hex head screw				2	
26.c	Washer		Designation: DIN 125A		2	
			Inner diameter: 8,4			
			Outer diameter: 16			
			Thickness: 1,6			
26a	Strap cpl.				2	
36	Lock nut		Thread: M8		1	
- 44a	Inlet part cpl.				1	



Company name:

Created by:

Phone:

Date:

2/20/2018

Position	Description	Annotation	Classification data	Part No.	Count	Unit
	Inlet part					
	Guide cup					
45	Neck ring cpl.					
65	Retainer					
44b	Inlet part				1	
47a	Bearing ring				2	
49	Impeller cpl.				12	
- 51	Shaft, spline, cpl.				1	
	Bar					
62	Stop ring					
64	Spacing bush		Length: 9.00		2	
64.d	Spacer				2	
64c	Spacing pipe		Length: 12.7		1	
66	Wedge lock washer				1	
69	Spacing pipe		Length: 29.05		9	
69	Spacing bush		Length: 18.00		1	
105	Shaft seal		Material type: HQQE		1	pcs