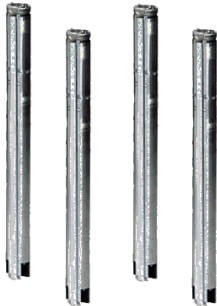


PROJECT: _____	UNIT TAG: _____	QUANTITY: _____
REPRESENTATIVE: _____	TYPE OF SERVICE: _____	DATE: _____
ENGINEER: _____	SUBMITTED BY: _____	DATE: _____
CONTRACTOR: _____	APPROVED BY: _____	DATE: _____
	ORDER NO.: _____	DATE: _____

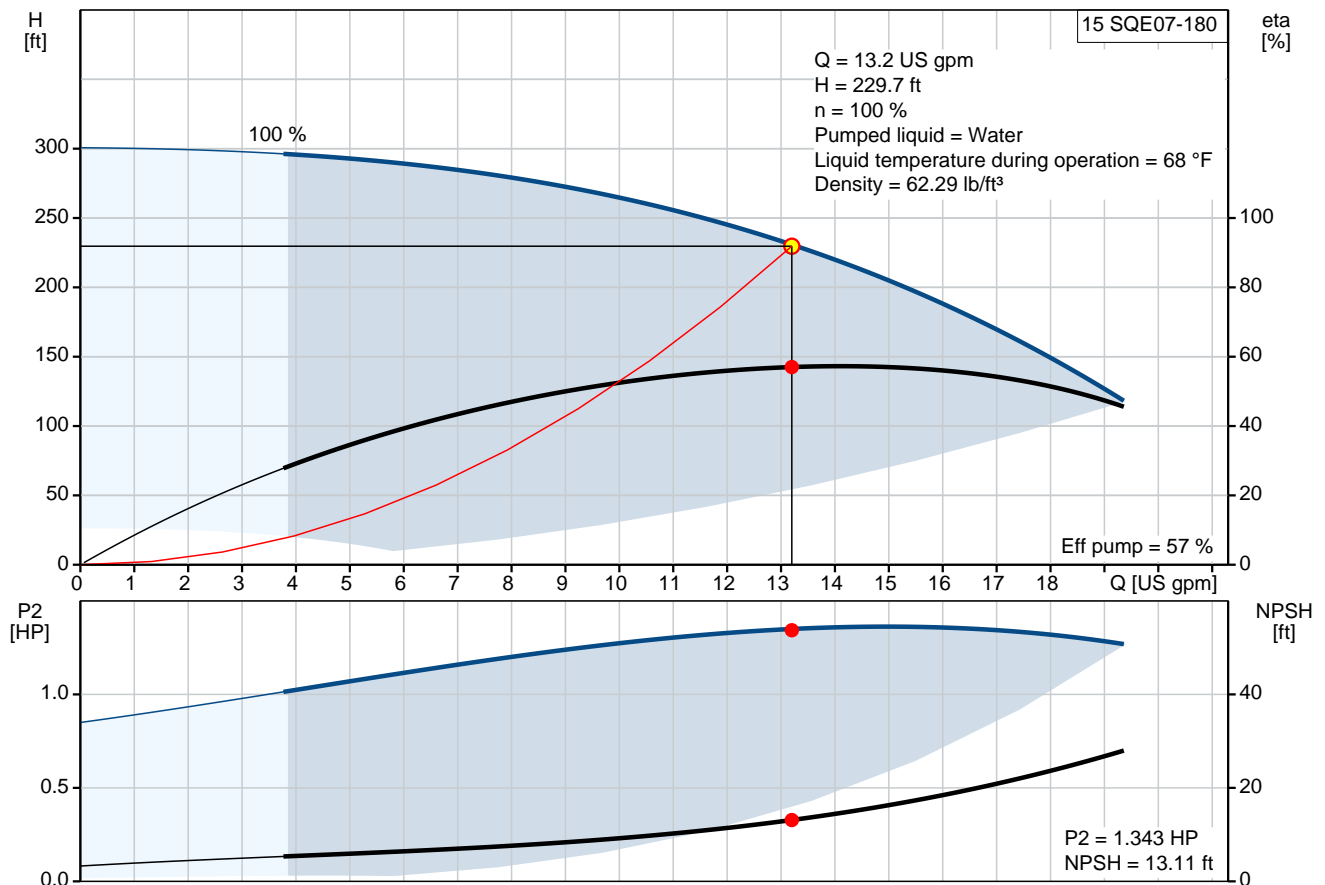


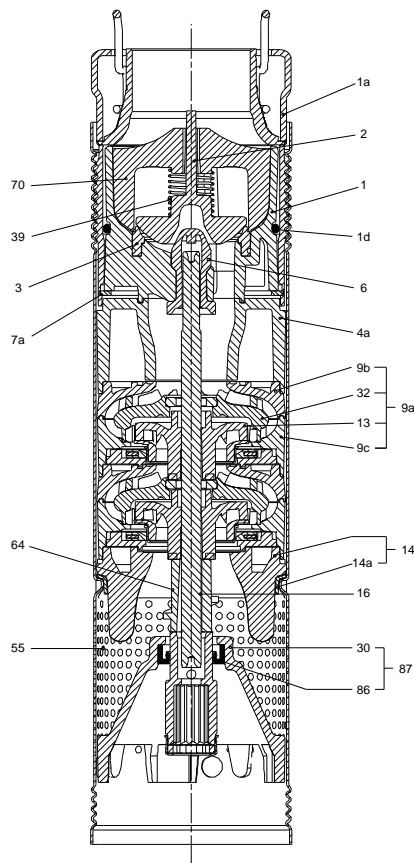
### 15 SQE07-180

Submersible pumps with variable speed motor

Product photo could vary from the actual product

Conditions of Service		Pump Data		Motor Data	
Flow:	13.2 US gpm	Approvals:	UL, cUL	Rated voltage:	200-240 V
Head:	229.7 ft	Approvals motor:	UL, CUL	Main frequency:	50 Hz
Efficiency:		Product number:	96160192	Enclosure class:	IP68
Liquid:	Water			Insulation class:	F
Temperature:	68 °F			Motor protection:	Y
NPSH required:	13.11 ft			Thermal protection:	internal
Viscosity:				Motor type:	MSE3
Specific Gravity:	1.000				



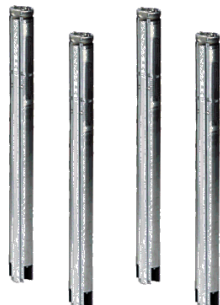


**Materials:**

Pump: Polyethylene / Stainless steel  
DIN W.-Nr. 1.4301

Motor: Stainless steel  
1.4301 EN  
AISI 304

## Tender Text



Product photo could vary from the actual product

Product No.: [96160192](#)

### 15 SQE07-180

3" multi-stage, submersible pump designed for domestic water supply, liquid transfer in tanks, irrigation and environmental applications. The pump has "floating" impellers, each with its own tungsten carbide/ceramic bearing.

The pump features soft starting and protection against dry-running, upthrust, overvoltage, undervoltage, overload and overtemperature.

The motor is a one-phase motor of the permanent magnet rotor type ensuring optimum efficiency within a wide load range.  
The motor is fitted with a replaceable cable plug.

### Liquid:

Pumped liquid:	Water
Maximum liquid temperature:	95 °F
Max liquid temperature at 0.15 m/sec:	95 °F
Liquid temperature during operation:	68 °F
Density:	62.29 lb/ft <sup>3</sup>

### Technical:

Speed for pump data:	10700 rpm
Actual calculated flow:	13.2 US gpm
Resulting head of the pump:	229.7 ft
Approvals on nameplate:	UL, cUL
Approvals on motor nameplate:	UL, CUL
Curve tolerance:	ISO9906:2012 3B

### Materials:

Pump:	Polyethylene / Stainless steel DIN W.-Nr. 1.4301
Motor:	Stainless steel 1.4301 EN AISI 304

### Installation:

Pump outlet:	NPT 1 1/4
Minimum borehole diameter:	2.99 in

### Electrical data:

Motor type:	MSE3
-------------	------



**Company name:**

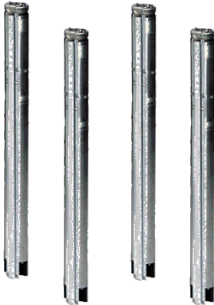
**Created by:**

**Phone:**

**Date:**

2/22/2018

Power input - P1:	1.65 kW
Rated power - P2:	1.542 HP
Main frequency:	50 Hz
Rated voltage:	1 x 200-240 V
Rated current:	8.4 A
Power factor:	1,00
Rated speed:	10700 rpm
Start. method:	direct-on-line
Enclosure class (IEC 34-5):	IP68
Insulation class (IEC 85):	F
Length of cable:	4.922 ft

Position	Count	Description
	1	<p><b>15 SQE07-180</b></p>  <p>Product photo could vary from the actual product</p> <p>Product No.: <a href="#">96160192</a></p> <p>3" multi-stage, submersible pump designed for domestic water supply, liquid transfer in tanks, irrigation and environmental applications. The pump has "floating" impellers, each with its own tungsten carbide/ceramic bearing.</p> <p>The pump features soft starting and protection against dry-running, upthrust, overvoltage, undervoltage, overload and overtemperature.</p> <p>The motor is a one-phase motor of the permanent magnet rotor type ensuring optimum efficiency within a wide load range.</p> <p>The motor is fitted with a replaceable cable plug.</p> <p><b>Liquid:</b></p> <p>Pumped liquid: Water</p> <p>Maximum liquid temperature: 95 °F</p> <p>Max liquid temperature at 0.15 m/sec: 95 °F</p> <p>Liquid temperature during operation: 68 °F</p> <p>Density: 62.29 lb/ft³</p> <p><b>Technical:</b></p> <p>Speed for pump data: 10700 rpm</p> <p>Actual calculated flow: 13.2 US gpm</p> <p>Resulting head of the pump: 229.7 ft</p> <p>Approvals on nameplate: UL, cUL</p> <p>Approvals on motor nameplate: UL, CUL</p> <p>Curve tolerance: ISO9906:2012 3B</p> <p><b>Materials:</b></p> <p>Pump: Polyethylene / Stainless steel DIN W.-Nr. 1.4301</p> <p>Motor: Stainless steel 1.4301 EN AISI 304</p> <p><b>Installation:</b></p> <p>Pump outlet: NPT 1 1/4</p> <p>Minimum borehole diameter: 2.99 in</p> <p><b>Electrical data:</b></p> <p>Motor type: MSE3</p> <p>Power input - P1: 1.65 kW</p> <p>Rated power - P2: 1.542 HP</p>



Company name:

Created by:

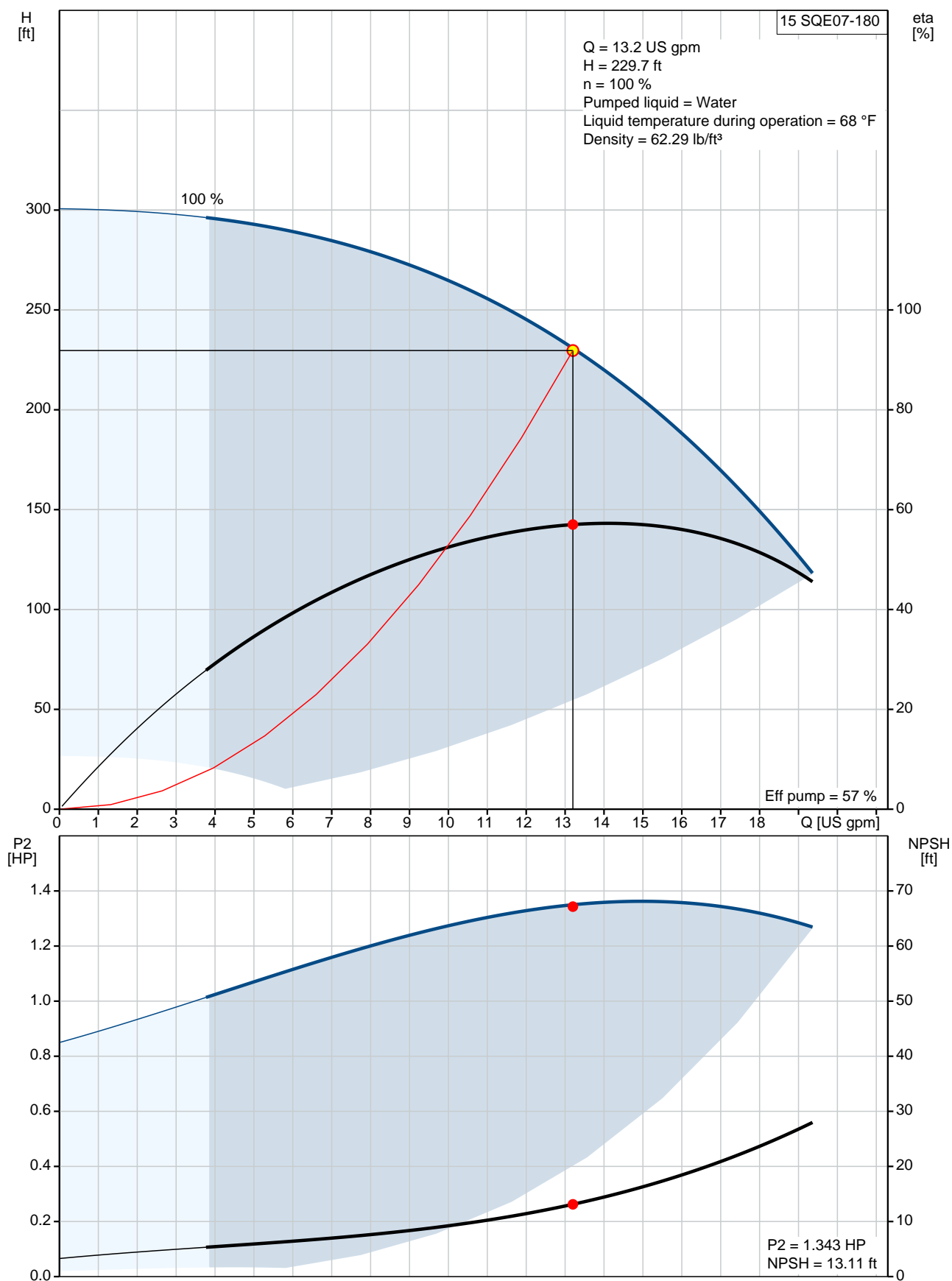
Phone:

Date:

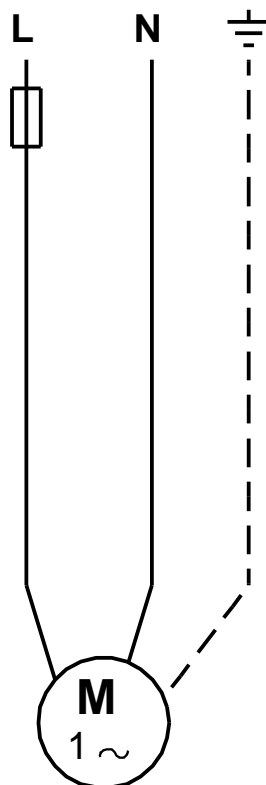
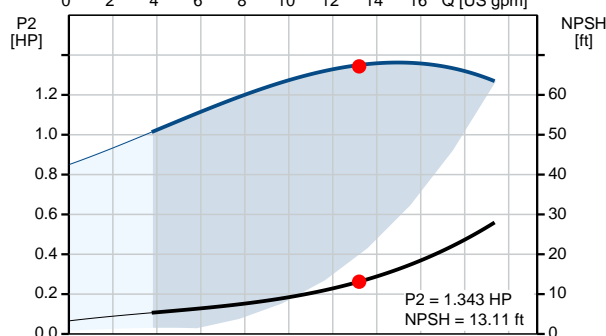
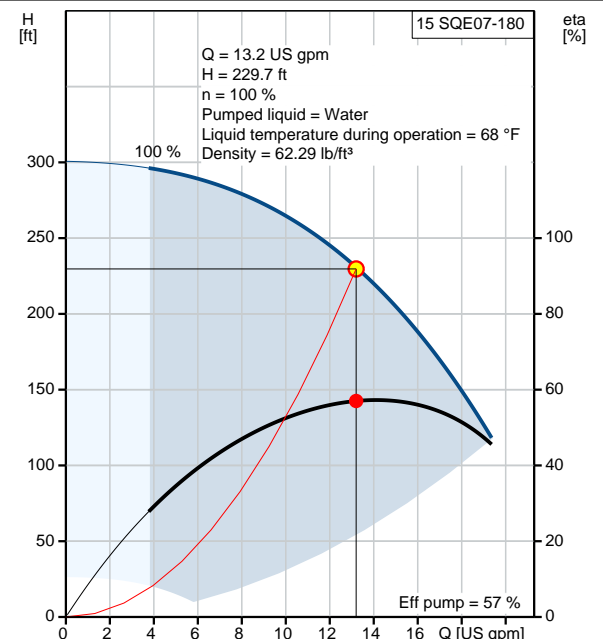
2/22/2018

Position	Count	Description
		Main frequency: 50 Hz Rated voltage: 1 x 200-240 V Rated current: 8.4 A Power factor: 1,00 Rated speed: 10700 rpm Start. method: direct-on-line Enclosure class (IEC 34-5): IP68 Insulation class (IEC 85): F Length of cable: 4.922 ft

## 96160192 15 SQE07-180 50 Hz

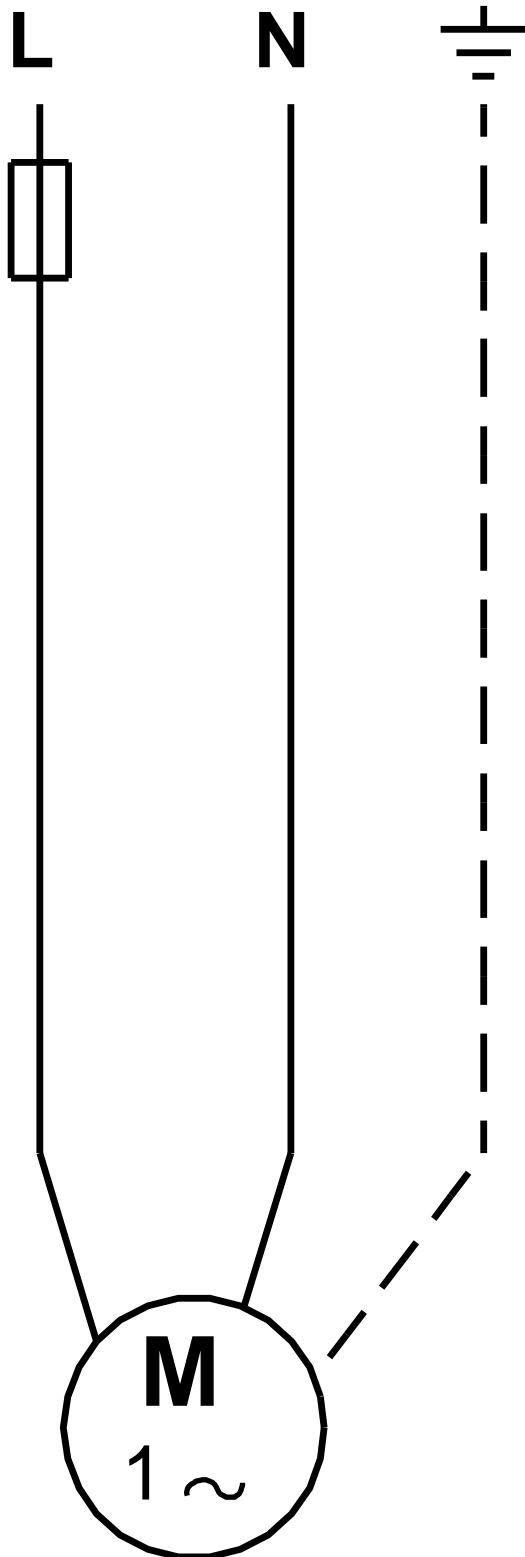


Description	Value
<b>General information:</b>	
Product name:	15 SQE07-180
Product No.:	96160192
EAN:	5700398712947
<b>Technical:</b>	
Speed for pump data:	10700 rpm
Actual calculated flow:	13.2 US gpm
Resulting head of the pump:	229.7 ft
Stages:	5
Approvals on nameplate:	UL, cUL
Approvals on motor nameplate:	UL, CUL
Curve tolerance:	ISO9906:2012 3B
Pump Number:	96397419
Model:	B
Valve:	pump with built-in non-return valve
<b>Materials:</b>	
Pump:	Polyethylene / Stainless steel
	DIN W.-Nr. 1.4301
Motor:	Stainless steel
	1.4301 EN
	AISI 304
<b>Installation:</b>	
Pump outlet:	NPT 1 1/4
Minimum borehole diameter:	2.99 in
<b>Liquid:</b>	
Pumped liquid:	Water
Maximum liquid temperature:	95 °F
Max liquid temperature at 0.15 m/sec:	95 °F
Liquid temperature during operation:	68 °F
Density:	62.29 lb/ft³
<b>Electrical data:</b>	
Motor type:	MSE3
Power input - P1:	1.65 kW
Rated power - P2:	1.542 HP
Main frequency:	50 Hz
Rated voltage:	1 x 200-240 V
Rated current:	8.4 A
Power factor:	1,00
Rated speed:	10700 rpm
Start. method:	direct-on-line
Enclosure class (IEC 34-5):	IP68
Insulation class (IEC 85):	F
Motor protection:	Y
Thermal protec:	internal
Length of cable:	4.922 ft
Motor Number:	96160540
<b>Controls:</b>	
CU 300/CU 301:	communication with CU 300/CU 301 possible
<b>Others:</b>	
Sales region:	Namreg





96160192 15 SQE07-180 50 Hz



All units are [mm] unless otherwise presented.



Company name:

Created by:

Phone:

Date:

2/22/2018

---

**Order Data:**

Product name: 15 SQE07-180

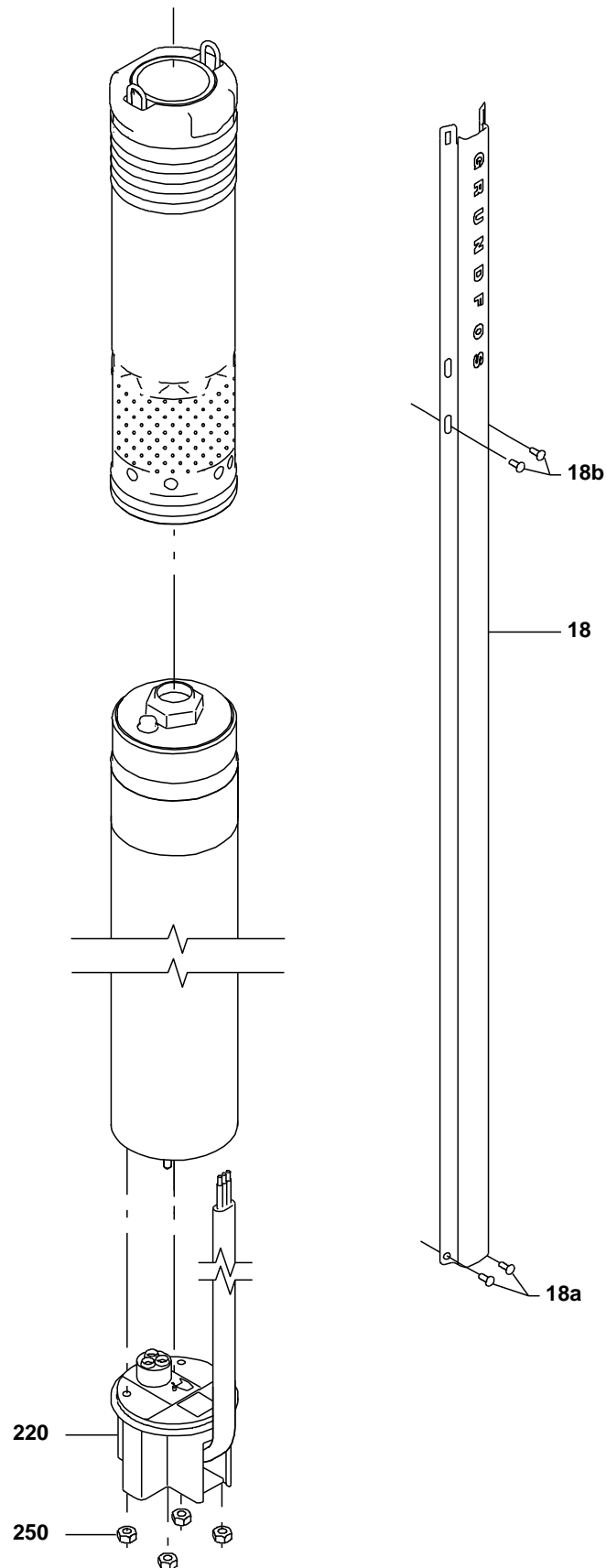
Amount: 1

Product No.: 96160192

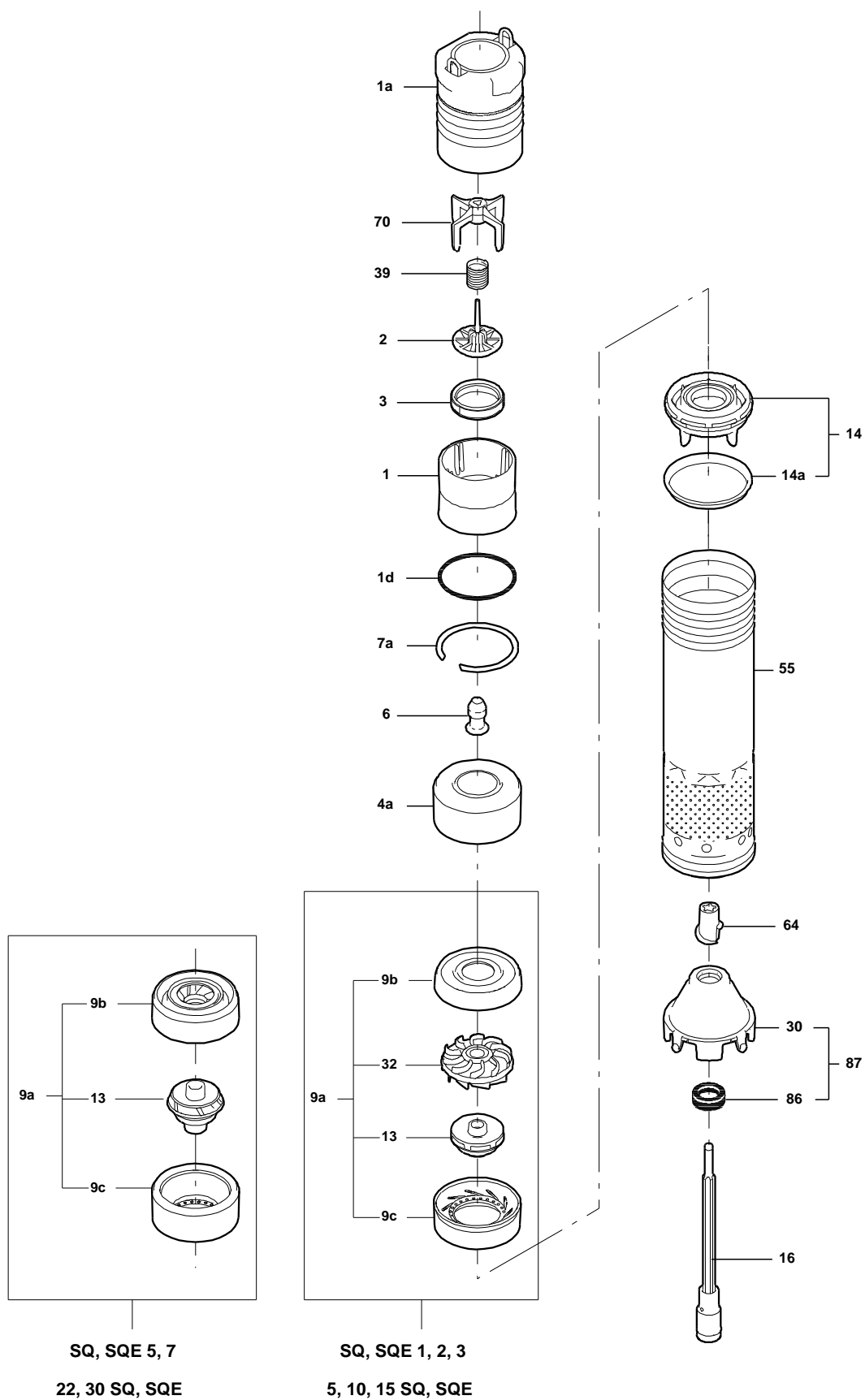
Total: Price on request

---

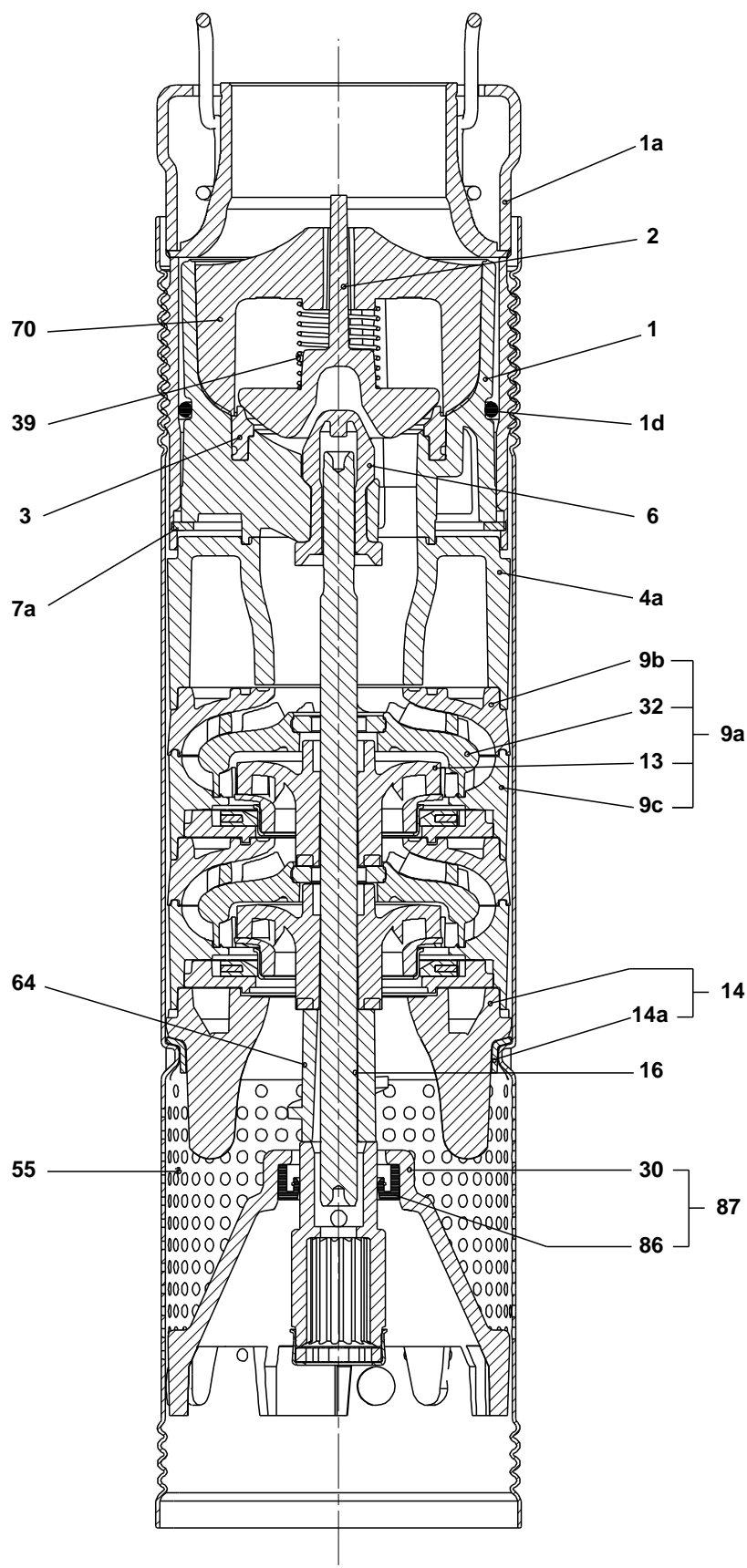
## Exploded view (tm021901 2401)



## Exploded view (tm024206 0202)

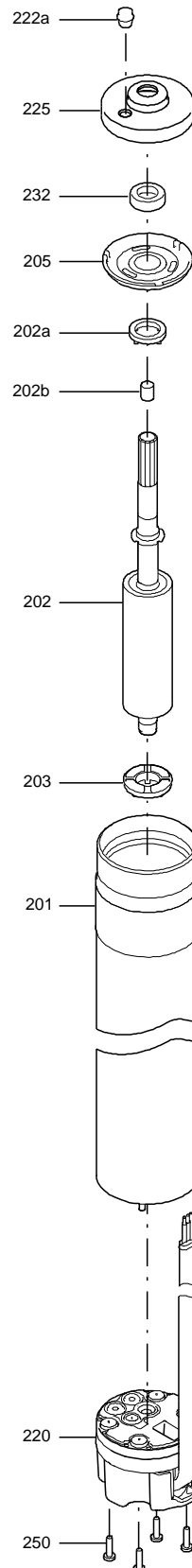


## Sectional drawing (tm024207 0202)

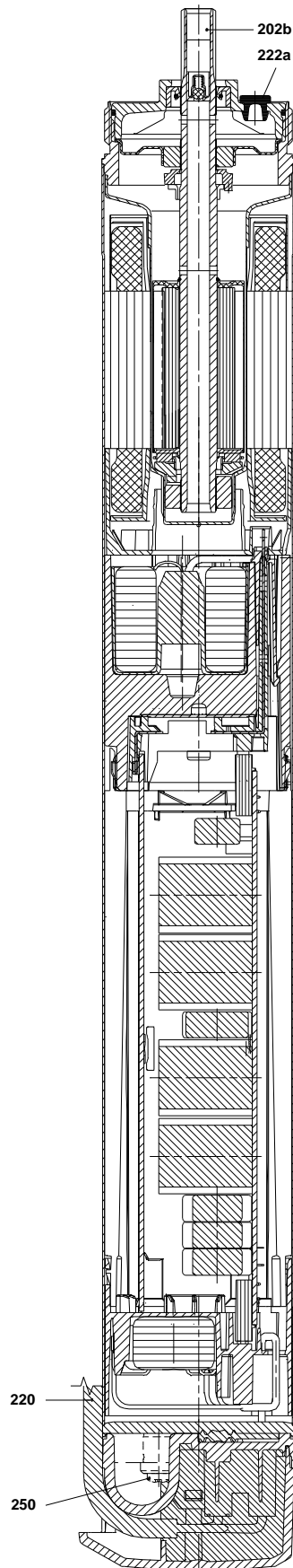


TM024207

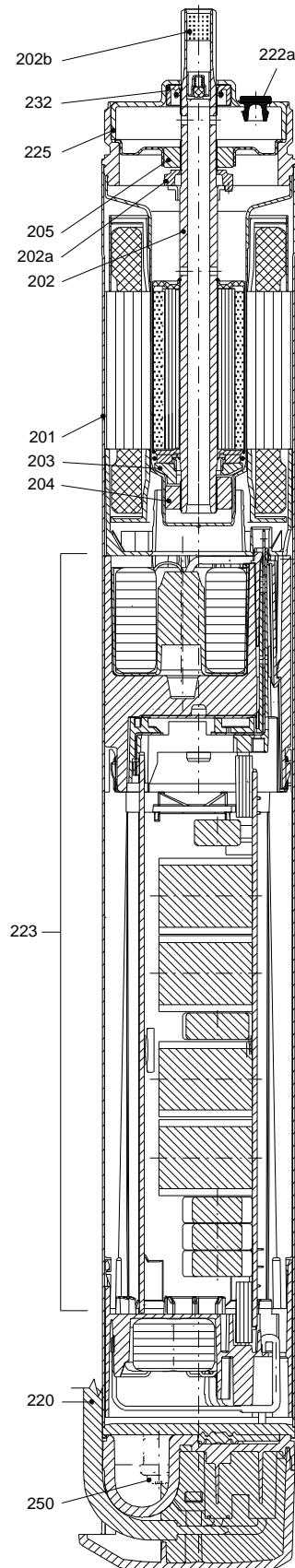
## Exploded view (TM012016 3504)



Sectional drawing ( TM038215 )



## Sectional drawing (TM011953 3504)







Company name:

Created by:

Phone:

Date:

2/22/2018

**Parts list 15 SQE07-180, Prod number 96160192**

**Valid from 3.12.2012 (1249)**

Position	Description	Annotation	Classification data	Part No.	Count	Unit
-	Pump w/o motor				1	pcs
1a	Discharge chamber		Thread: NPT 1 1/4"		1	
16	Shaft cpl.		Length: 205,6		1	
55	Pump sleeve				1	
-	Motor				1	pcs
	Cable w/plug				1	
250	Pan head screw				4	
18	Rail for cable guard				1	pcs