

Count	Description
1	<p><b>DME 375-10 AR</b></p>  <p>Product photo could vary from the actual product</p> <p>Product No.: <a href="#">96529121</a></p> <ul style="list-style-type: none"> <li>· Compact positive displacement diaphragm dosing pump, with integrated variable speed motor drive, in an IP 65 plastic enclosure.</li> <li>· The pump is designed for optimum user-friendliness, accuracy and reliability, and is equipped with a logical control panel with one-touch buttons and a multi-language backlight display.</li> <li>· The capacity to be dosed in each function is set directly in gal, l, or ml per hour.</li> <li>· For enhanced accuracy, the pump can be calibrated to the actual installation by means of a simple calibration function.</li> <li>· The turndown ratio is 1 to 800 with the same accuracy and uniform dosage with reduced pulsation throughout the entire capacity range.</li> <li>· The pump is also equipped with a maximum capacity function (100%) that allows it to work for a preset time at max capacity to facilitate priming or ordinary maintenance, without modifying the pump's settings.</li> </ul> <p>The liquid end is composed of:</p> <ul style="list-style-type: none"> <li>· Pump head</li> <li>· PTFE-coated diaphragm</li> <li>· Ball valves</li> <li>· Manual bleed valve</li> </ul> <p>Possible operating modes:</p> <ul style="list-style-type: none"> <li>· Manual dosing with direct setting in gph, ml/hour, or l/hour</li> <li>· External pulse control from external controller or flow meter with direct setting in ml/pulse</li> <li>· External analog 4-20, 20-4, 0-20 and 20-0 mA control with possibility to adjust the pump capacity at maximum signal.</li> <li>· Timer-based batch function (internal timer).</li> <li>· Pulse-based batch function (external pulse).</li> </ul> <p>Other features:</p> <ul style="list-style-type: none"> <li>· Electronic lock to prevent unauthorized setting changes</li> <li>· Anti-cavitation function for high-viscosity, gassing liquids or long suction lines</li> <li>· Maximum capacity limitation</li> <li>· Counters for numbers of pump strokes, hours of operation, and power on/off.</li> <li>· 14 optional display languages</li> <li>· Level control with input for low level and empty tank signals</li> <li>· Alarm relay output</li> <li>· Overload protection</li> </ul> <p><b>Controls:</b></p> <p>Control variant: AR</p> <p>Level control: input for dual-level sensor or external start/stop integrated</p> <p><b>Liquid:</b></p> <p>Pumped liquid: Water</p> <p>Selected liquid temperature: 68 °F</p> <p>Density: 62.29 lb/ft³</p>



Company name:

Created by:

Phone:

Date:

4/11/2019

Count	Description
	<b>Technical:</b> Approvals on nameplate: CSA, CE
	<b>Materials:</b> Pump housing: Stainless steel 1.4401 Valve ball: Stainless steel 1.4401 Gasket: FKM
	<b>Installation:</b> Maximum operating pressure: 145.04 psi Pump inlet: THREADED NPT 1 1/4" Pump outlet: THREADED NPT 1 1/4"
	<b>Electrical data:</b> Main frequency: 60 Hz Rated voltage: 1 x 120 V Rated current: 2.4 A Type of cable plug: USA,CANADA
	<b>Others:</b> Custom tariff no.: 8413.50.0050



Company name:

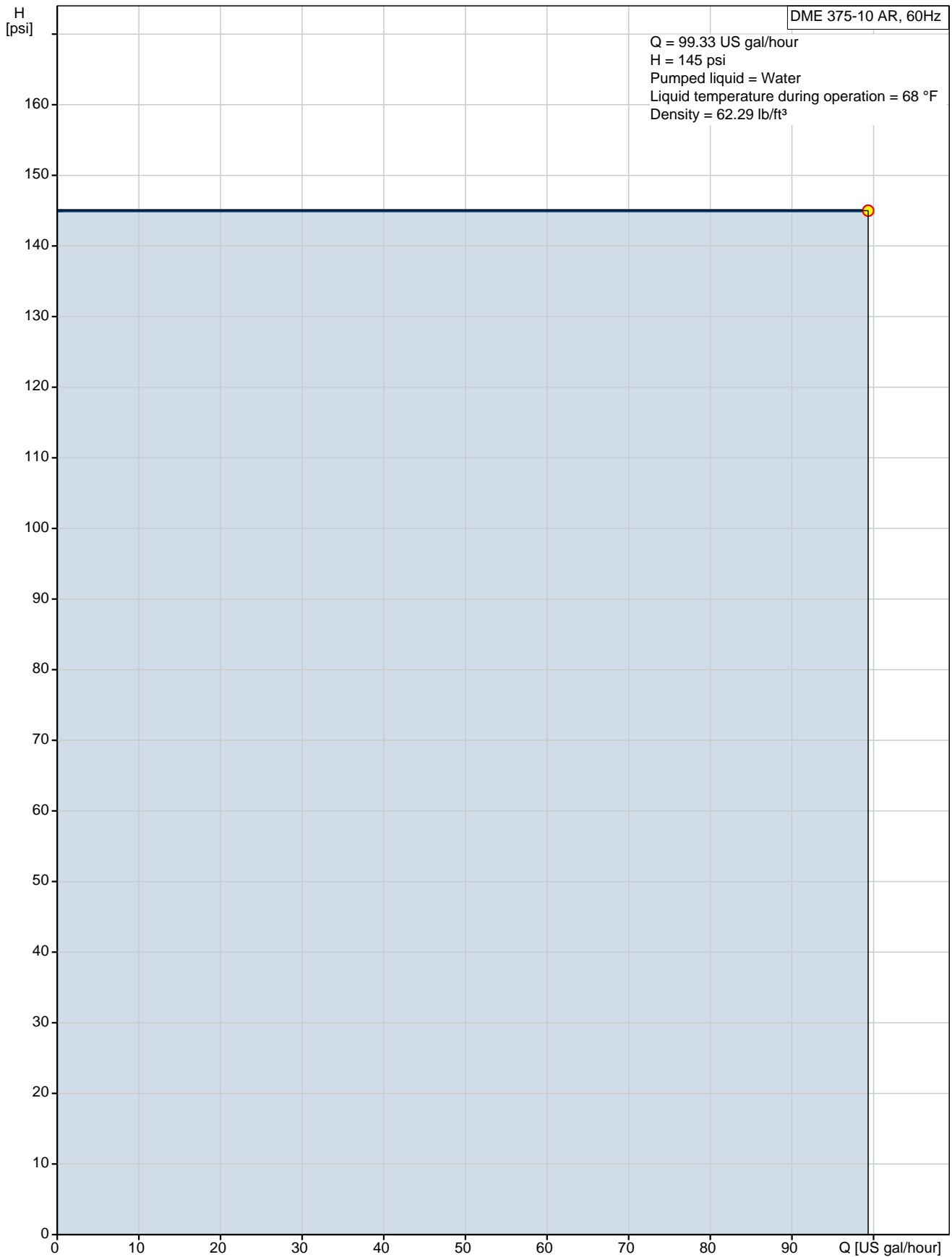
Created by:

Phone:

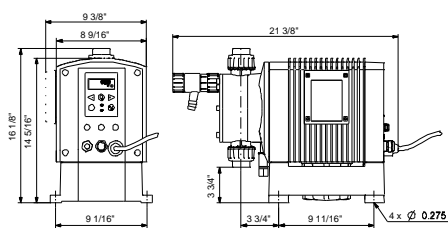
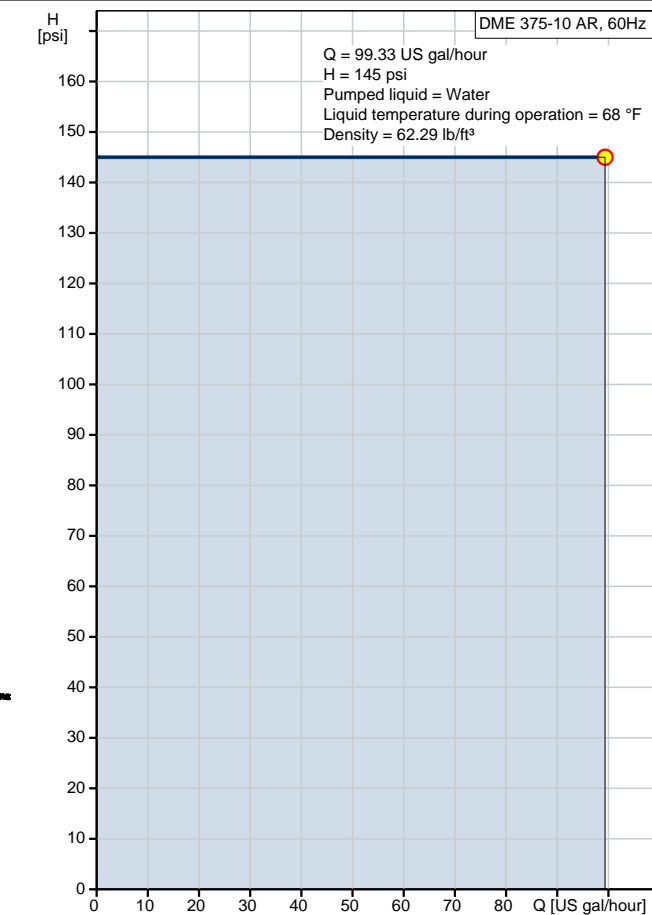
Date:

4/11/2019

## 96529121 DME 375-10 AR 60 Hz



Description	Value
<b>General information:</b>	
Product name:	DME 375-10 AR
Product No.:	96529121
EAN:	5700397157282
<b>Technical:</b>	
Max. capacity:	99.06 US gal/hour
Approvals on nameplate:	CSA, CE
Anti-cavitation:	function integrated
Venting valve:	No
Valve:	Standard
<b>Materials:</b>	
Pump housing:	Stainless steel 1.4401
Valve ball:	Stainless steel 1.4401
Gasket:	FKM
<b>Installation:</b>	
Maximum operating pressure:	145.04 psi
Pump inlet:	THREADED NPT 1 1/4"
Pump outlet:	THREADED NPT 1 1/4"
<b>Liquid:</b>	
Pumped liquid:	Water
Selected liquid temperature:	68 °F
Density:	62.29 lb/ft³
<b>Electrical data:</b>	
Main frequency:	60 Hz
Rated voltage:	1 x 120 V
Rated current:	2.4 A
Type of cable plug:	USA,CANADA
<b>Controls:</b>	
Control variant:	AR
Control panel:	Side
Level control:	input for dual-level sensor or external start/stop integrated
Pulse control:	input for pulse control integrated
Batch (puls):	puls-based batch function integrated
4-20 mA control:	input for analog 4-20 mA control integrated
Capacity limit:	max. capacity limitation function integrated
Batch (timer):	timer-based batch function integrated
Other in/output:	ALARM RELAY
<b>Others:</b>	
Custom tariff no.:	8413.50.0050



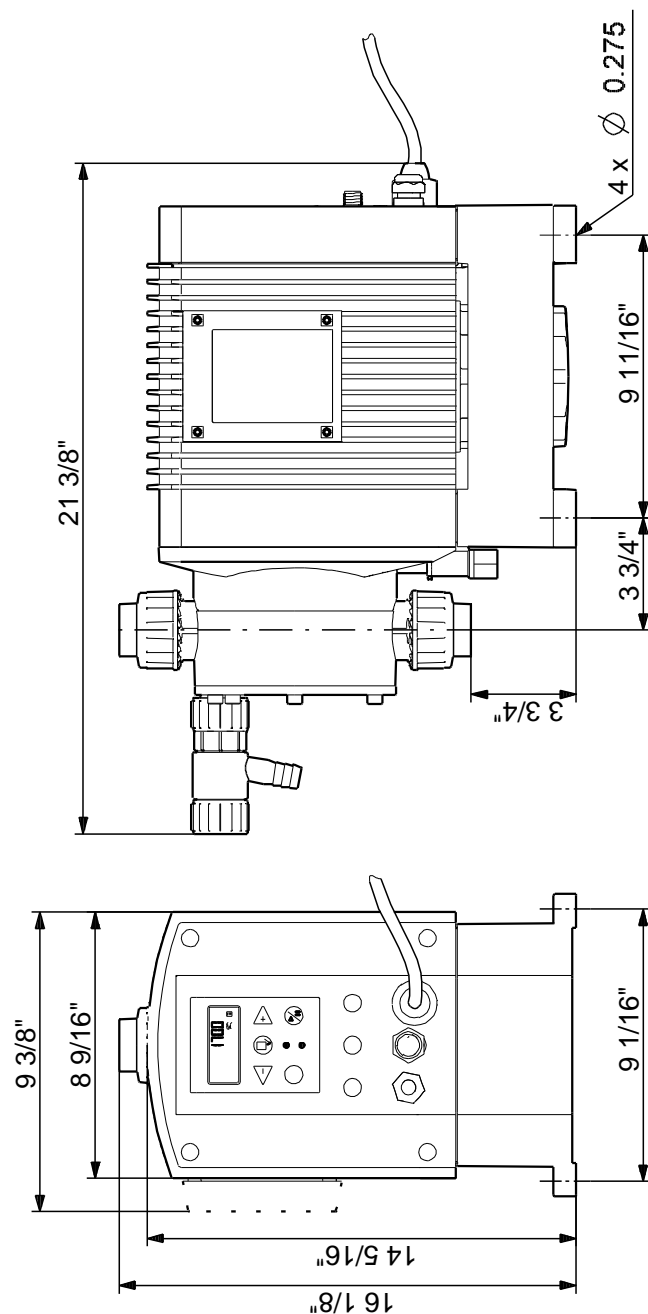
See Installation and Operating Instructions

Siehe Montage- und Betriebsanleitung

Voir Notice d'installation et d'entretien

Se monterings- og driftsinstruktion

## 96529121 DME 375-10 AR 60 Hz



Note! All units are in [in] unless otherwise stated.

Disclaimer: This simplified dimensional drawing does not show all details.

**96529121 DME 375-10 AR 60 Hz**

See Installation and Operating Instructions

Siehe Montage- und Betriebsanleitung

Voir Notice d'installation et d'entretien

Se monterings- og driftsinstruktion

All units are [in] unless otherwise presented.



Company name:

Created by:

Phone:

Date:

4/11/2019

---

**Order Data:**

Product name: DME 375-10 AR

Amount: 1

Product No.: 96529121

Total: Price on request

---