


| Count                        | Description   |                  |   |                |                |                |       |                              |       |          |              |                         |         |               |                        |             |                        |
|------------------------------|---|------------------|---|----------------|----------------|----------------|-------|------------------------------|-------|----------|--------------|-------------------------|---------|---------------|------------------------|-------------|------------------------|
| 1                            | <p><b>DME 375-10 B</b></p>  <p>Product photo could vary from the actual product</p> <p>Product No.: <a href="#">96529135</a></p> <ul style="list-style-type: none"> <li>· Compact positive displacement diaphragm dosing pump, with integrated variable speed motor drive, in an IP 65 plastic enclosure.</li> <li>· The pump is designed for optimum user-friendliness, accuracy and reliability, and is equipped with a logical control panel with one-touch buttons and a multi-language backlight display.</li> <li>· The capacity to be dosed in each function is set directly in gal, l, or ml per hour.</li> <li>· For enhanced accuracy, the pump can be calibrated to the actual installation by means of a simple calibration function.</li> <li>· The turndown ratio is 1 to 800 with the same accuracy and uniform dosage with reduced pulsation throughout the entire capacity range.</li> <li>· The pump is also equipped with a maximum capacity function (100%) that allows it to work for a preset time at max capacity to facilitate priming or ordinary maintenance, without modifying the pump's settings.</li> </ul> <p>The liquid end is composed of:</p> <ul style="list-style-type: none"> <li>· Pump head</li> <li>· PTFE-coated diaphragm</li> <li>· Ball valves</li> <li>· Manual bleed valve</li> </ul> <p>Possible operating modes:</p> <ul style="list-style-type: none"> <li>· Manual dosing with direct setting in gph, ml/hour, or l/hour</li> </ul> <p>Other features:</p> <ul style="list-style-type: none"> <li>· Electronic lock to prevent unauthorized setting changes</li> <li>· Anti-cavitation function for high-viscosity, gassing liquids or long suction lines</li> <li>· Maximum capacity limitation</li> <li>· Counters for numbers of pump strokes, hours of operation, and power on/off.</li> <li>· 14 optional display languages.</li> <li>· Overload protection</li> </ul> <p><b>Controls:</b></p> <table> <tr> <td>Control variant:</td><td>B</td></tr> <tr> <td>Level control:</td><td>not integrated</td></tr> </table> <p><b>Liquid:</b></p> <table> <tr> <td>Pumped liquid:</td><td>Water</td></tr> <tr> <td>Selected liquid temperature:</td><td>68 °F</td></tr> <tr> <td>Density:</td><td>62.29 lb/ft³</td></tr> </table> <p><b>Technical:</b></p> <table> <tr> <td>Approvals on nameplate:</td><td>CSA, CE</td></tr> </table> <p><b>Materials:</b></p> <table> <tr> <td>Pump housing:</td><td>Stainless steel 1.4401</td></tr> <tr> <td>Valve ball:</td><td>Stainless steel 1.4401</td></tr> </table> | Control variant: | B | Level control: | not integrated | Pumped liquid: | Water | Selected liquid temperature: | 68 °F | Density: | 62.29 lb/ft³ | Approvals on nameplate: | CSA, CE | Pump housing: | Stainless steel 1.4401 | Valve ball: | Stainless steel 1.4401 |
| Control variant:             | B   |                  |   |                |                |                |       |                              |       |          |              |                         |         |               |                        |             |                        |
| Level control:               | not integrated  |                  |   |                |                |                |       |                              |       |          |              |                         |         |               |                        |             |                        |
| Pumped liquid:               | Water   |                  |   |                |                |                |       |                              |       |          |              |                         |         |               |                        |             |                        |
| Selected liquid temperature: | 68 °F   |                  |   |                |                |                |       |                              |       |          |              |                         |         |               |                        |             |                        |
| Density:                     | 62.29 lb/ft³  |                  |   |                |                |                |       |                              |       |          |              |                         |         |               |                        |             |                        |
| Approvals on nameplate:      | CSA, CE   |                  |   |                |                |                |       |                              |       |          |              |                         |         |               |                        |             |                        |
| Pump housing:                | Stainless steel 1.4401  |                  |   |                |                |                |       |                              |       |          |              |                         |         |               |                        |             |                        |
| Valve ball:                  | Stainless steel 1.4401  |                  |   |                |                |                |       |                              |       |          |              |                         |         |               |                        |             |                        |



Company name:

Created by:

Phone:

Date:

4/11/2019

| Count | Description                            |
|-------|--|
|       | Gasket: FKM                            |
|       | <b>Installation:</b>                   |
|       | Maximum operating pressure: 145.04 psi |
|       | Pump inlet: THREADED NPT 1 1/4"        |
|       | Pump outlet: THREADED NPT 1 1/4"       |
|       | <b>Electrical data:</b>                |
|       | Main frequency: 60 Hz                  |
|       | Rated voltage: 1 x 120 V               |
|       | Rated current: 2.4 A                   |
|       | Type of cable plug: USA,CANADA         |
|       | <b>Others:</b>                         |
|       | Custom tariff no.: 8413.50.0050        |



Company name:

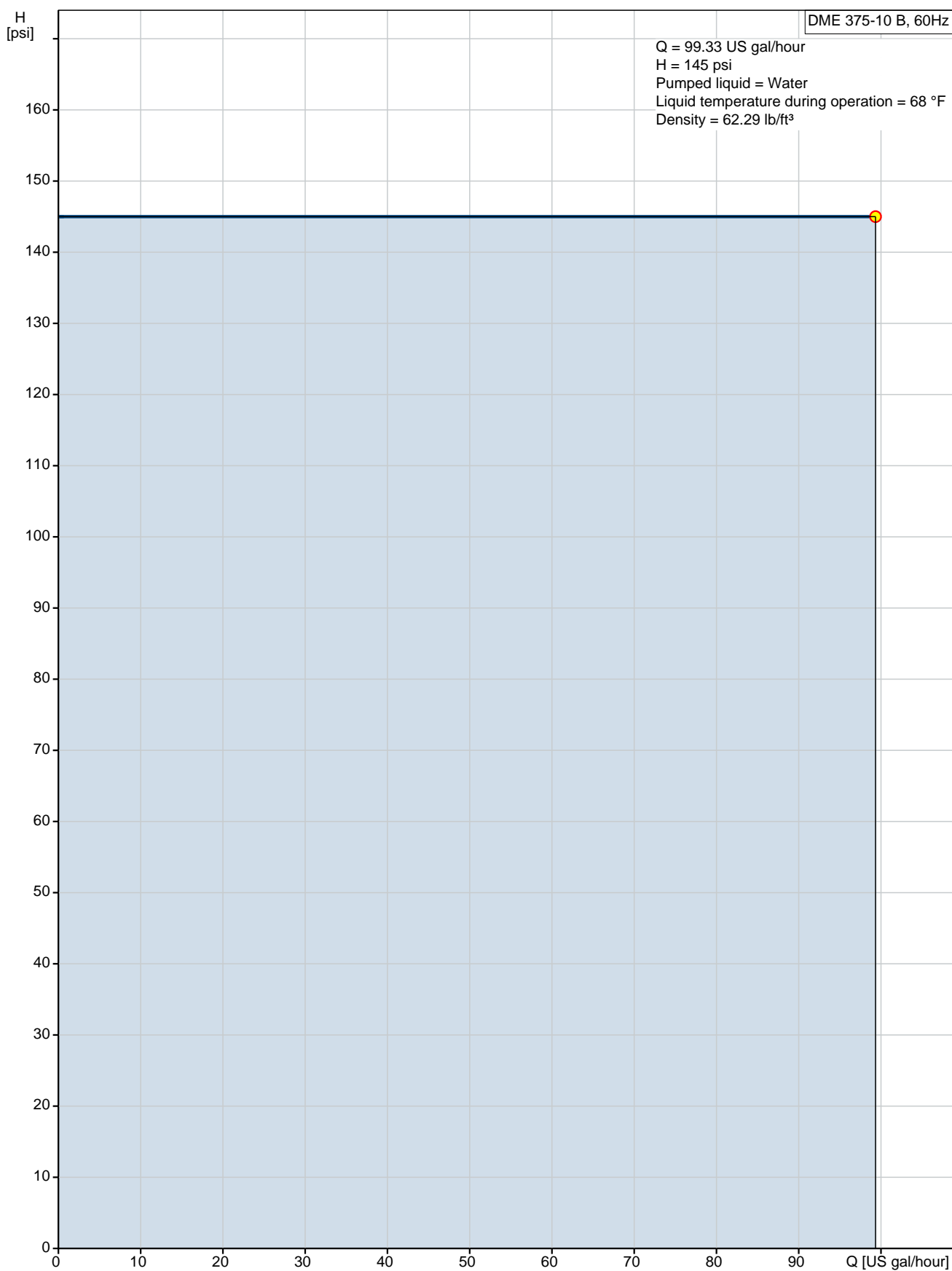
Created by:

Phone:

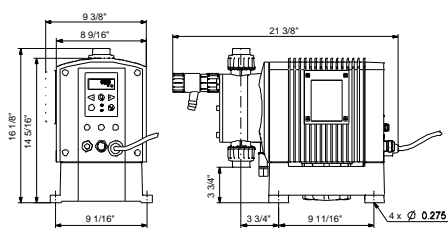
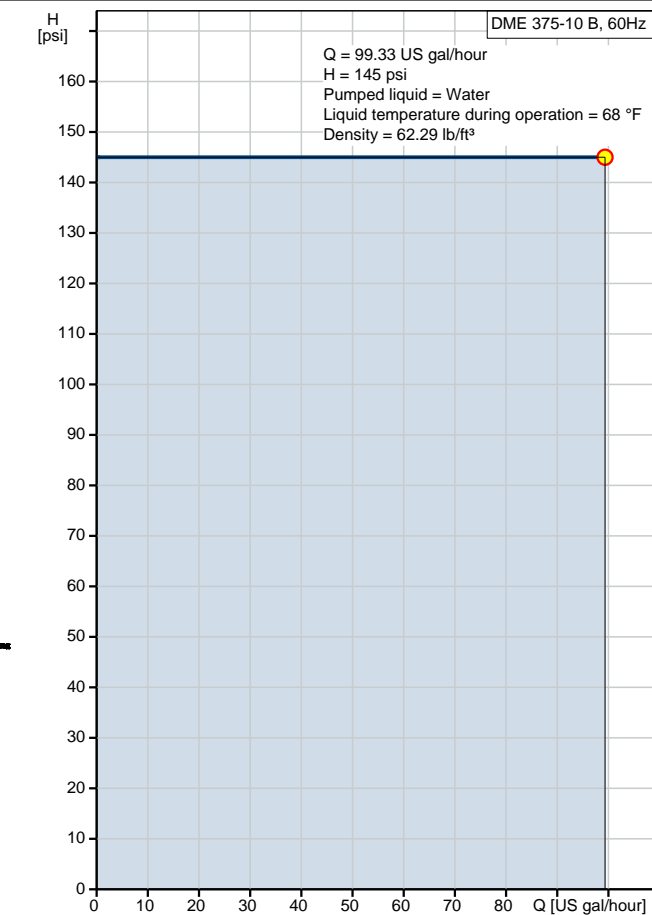
Date:

4/11/2019

## 96529135 DME 375-10 B 60 Hz



| Description                  | Value  |
|------------------------------|--|
| <b>General information:</b>  |  |
| Product name:                | DME 375-10 B                                 |
| Product No.:                 | 96529135                                     |
| EAN:                         | 5700397157459                                |
| <b>Technical:</b>            |  |
| Max. capacity:               | 99.06 US gal/hour                            |
| Approvals on nameplate:      | CSA, CE                                      |
| Anti-cavitation:             | function integrated                          |
| Venting valve:               | No   |
| Valve:                       | Standard                                     |
| <b>Materials:</b>            |  |
| Pump housing:                | Stainless steel 1.4401                       |
| Valve ball:                  | Stainless steel 1.4401                       |
| Gasket:                      | FKM  |
| <b>Installation:</b>         |  |
| Maximum operating pressure:  | 145.04 psi                                   |
| Pump inlet:                  | THREADED NPT 1 1/4"                          |
| Pump outlet:                 | THREADED NPT 1 1/4"                          |
| <b>Liquid:</b>               |  |
| Pumped liquid:               | Water  |
| Selected liquid temperature: | 68 °F  |
| Density:                     | 62.29 lb/ft³                                 |
| <b>Electrical data:</b>      |  |
| Main frequency:              | 60 Hz  |
| Rated voltage:               | 1 x 120 V                                    |
| Rated current:               | 2.4 A  |
| Type of cable plug:          | USA,CANADA                                   |
| <b>Controls:</b>             |  |
| Control variant:             | B  |
| Control panel:               | Side   |
| Level control:               | not integrated                               |
| Pulse control:               | not integrated                               |
| Batch (puls):                | not integrated                               |
| 4-20 mA control:             | not integrated                               |
| Capacity limit:              | max. capacity limitation function integrated |
| Batch (timer):               | not integrated                               |
| Other in/output:             | no   |
| <b>Others:</b>               |  |
| Custom tariff no.:           | 8413.50.0050                                 |



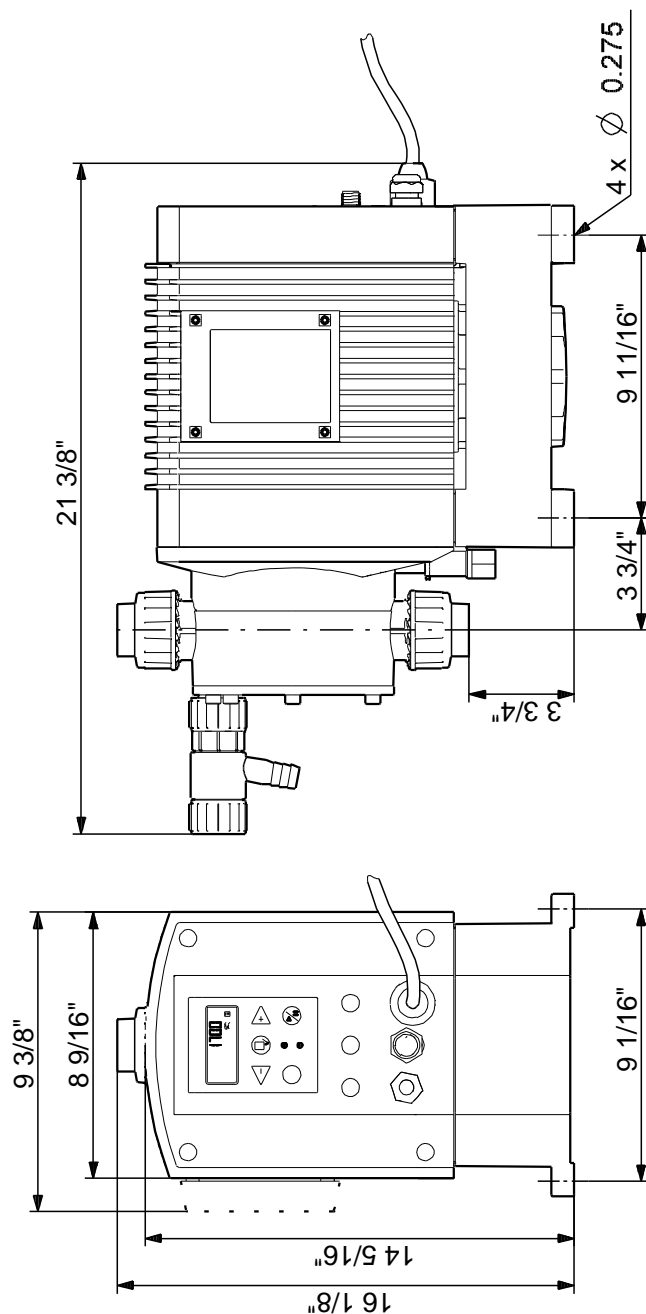
See Installation and Operating Instructions

Siehe Montage- und Betriebsanleitung

Voir Notice d'installation et d'entretien

Se monterings- og driftsinstruktion

## 96529135 DME 375-10 B 60 Hz



Note! All units are in [in] unless otherwise stated.

Disclaimer: This simplified dimensional drawing does not show all details.

**96529135 DME 375-10 B 60 Hz**

See Installation and Operating Instructions

Siehe Montage- und Betriebsanleitung

Voir Notice d'installation et d'entretien

Se monterings- og driftsinstruktion

All units are [in] unless otherwise presented.



Company name:

Created by:

Phone:

Date:

4/11/2019

---

**Order Data:**

Product name: DME 375-10 B

Amount: 1

Product No.: 96529135

Total: Price on request

---