


Count	Description
1	<p>DME 940-4 AR</p>  <p>Product photo could vary from the actual product</p> <p>Product No.: 96529151</p> <ul style="list-style-type: none"> · Compact positive displacement diaphragm dosing pump, with integrated variable speed motor drive, in an IP 65 plastic enclosure. · The pump is designed for optimum user-friendliness, accuracy and reliability, and is equipped with a logical control panel with one-touch buttons and a multi-language backlight display. · The capacity to be dosed in each function is set directly in gal, l, or ml per hour. · For enhanced accuracy, the pump can be calibrated to the actual installation by means of a simple calibration function. · The turndown ratio is 1 to 800 with the same accuracy and uniform dosage with reduced pulsation throughout the entire capacity range. · The pump is also equipped with a maximum capacity function (100%) that allows it to work for a preset time at max capacity to facilitate priming or ordinary maintenance, without modifying the pump's settings. <p>The liquid end is composed of:</p> <ul style="list-style-type: none"> · Pump head · PTFE-coated diaphragm · Ball valves · Manual bleed valve <p>Possible operating modes:</p> <ul style="list-style-type: none"> · Manual dosing with direct setting in gph, ml/hour, or l/hour · External pulse control from external controller or flow meter with direct setting in ml/pulse · External analog 4-20, 20-4, 0-20 and 20-0 mA control with possibility to adjust the pump capacity at maximum signal. · Timer-based batch function (internal timer). · Pulse-based batch function (external pulse). <p>Other features:</p> <ul style="list-style-type: none"> · Electronic lock to prevent unauthorized setting changes · Anti-cavitation function for high-viscosity, gassing liquids or long suction lines · Maximum capacity limitation · Counters for numbers of pump strokes, hours of operation, and power on/off. · 14 optional display languages · Level control with input for low level and empty tank signals · Alarm relay output · Overload protection <p>Controls:</p> <p>Control variant: AR</p> <p>Level control: input for dual-level sensor or external start/stop integrated</p> <p>Liquid:</p> <p>Pumped liquid: Water</p> <p>Selected liquid temperature: 68 °F</p> <p>Density: 62.29 lb/ft³</p>



Company name:

Created by:

Phone:

Date:

4/11/2019

Count	Description
	Technical: Approvals on nameplate: CSA, CE
	Materials: Pump housing: Polypropylene Valve ball: Glass Gasket: FKM
	Installation: Maximum operating pressure: 58.02 psi Pump inlet: THREADED NPT 1 1/4" Pump outlet: THREADED NPT 1 1/4"
	Electrical data: Main frequency: 60 Hz Rated voltage: 1 x 120 V Rated current: 2.4 A Type of cable plug: USA,CANADA
	Others: Custom tariff no.: 8413.50.0050



Company name:

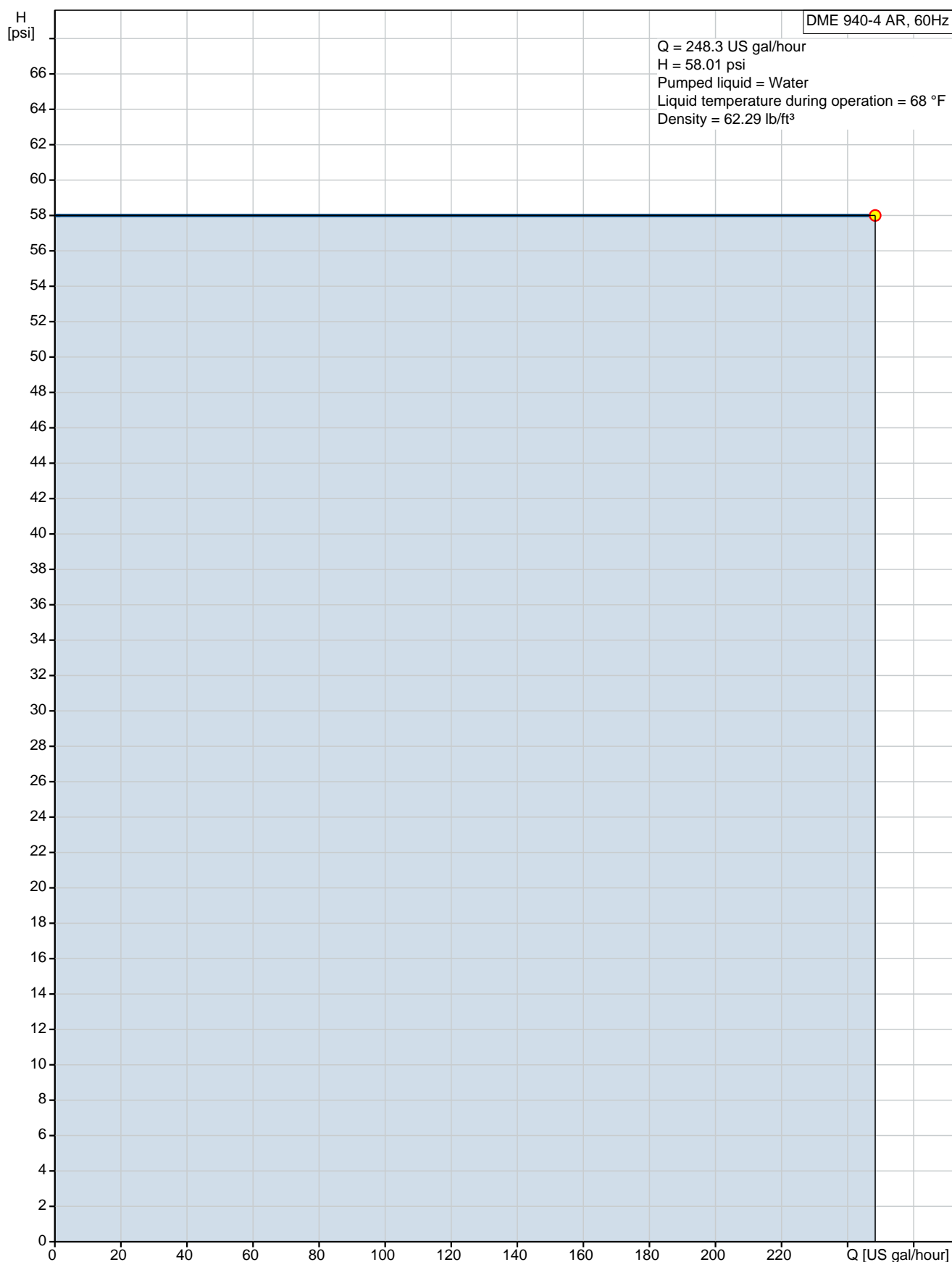
Created by:

Phone:

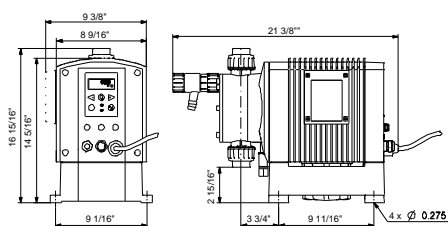
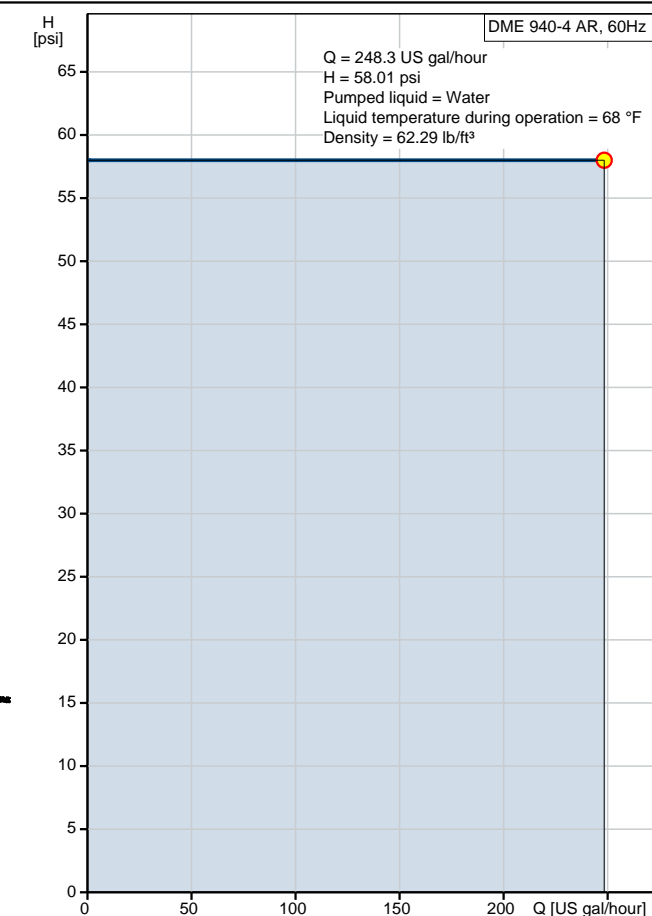
Date:

4/11/2019

96529151 DME 940-4 AR 60 Hz



Description	Value
General information:	
Product name:	DME 940-4 AR
Product No.:	96529151
EAN:	5700397157510
Technical:	
Max. capacity:	248.3 US gal/hour
Approvals on nameplate:	CSA, CE
Anti-cavitation:	function integrated
Venting valve:	integrated in pump housing
Valve:	Standard
Materials:	
Pump housing:	Polypropylene
Valve ball:	Glass
Gasket:	FKM
Installation:	
Maximum operating pressure:	58.02 psi
Pump inlet:	THREADED NPT 1 1/4"
Pump outlet:	THREADED NPT 1 1/4"
Liquid:	
Pumped liquid:	Water
Selected liquid temperature:	68 °F
Density:	62.29 lb/ft ³
Electrical data:	
Main frequency:	60 Hz
Rated voltage:	1 x 120 V
Rated current:	2.4 A
Type of cable plug:	USA,CANADA
Controls:	
Control variant:	AR
Control panel:	front
Level control:	input for dual-level sensor or external start/stop integrated
Pulse control:	input for pulse control integrated
Batch (puls):	puls-based batch function integrated
4-20 mA control:	input for analog 4-20 mA control integrated
Capacity limit:	max. capacity limitation function integrated
Batch (timer):	timer-based batch function integrated
Other in/output:	ALARM RELAY
Others:	
Custom tariff no.:	8413.50.0050



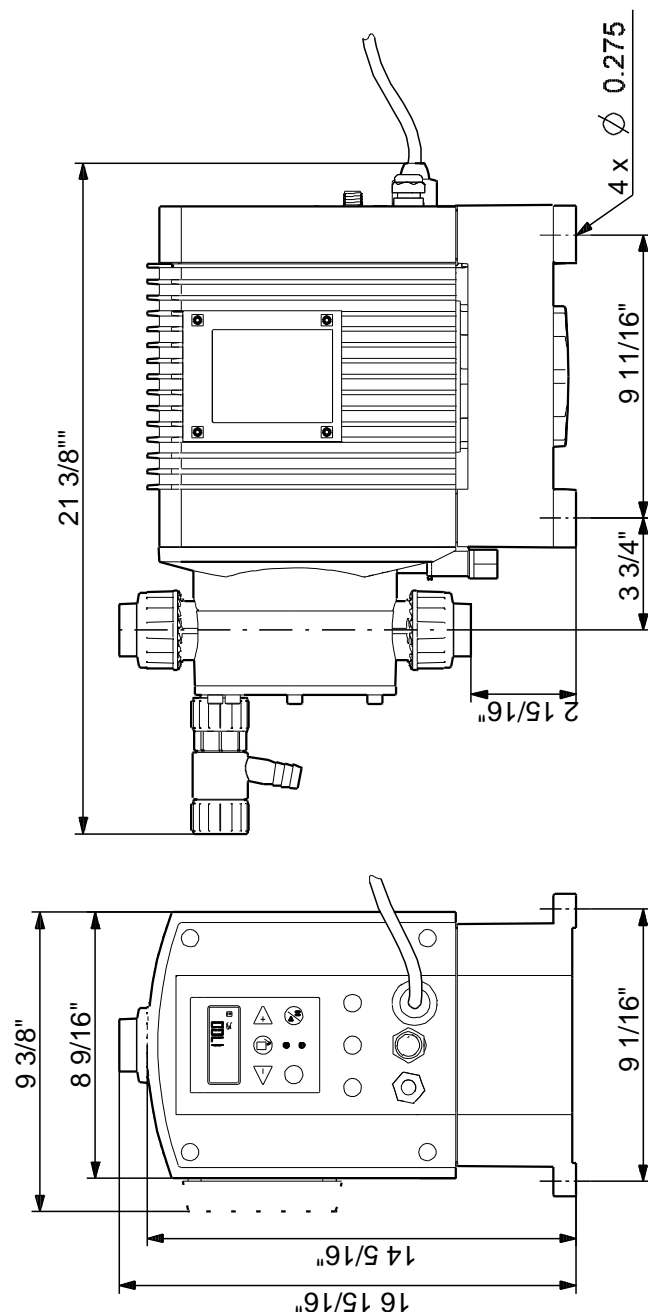
See Installation and Operating Instructions

Siehe Montage- und Betriebsanleitung

Voir Notice d'installation et d'entretien

Se monterings- og driftsinstruktion

96529151 DME 940-4 AR 60 Hz



Note! All units are in [in] unless otherwise stated.

Disclaimer: This simplified dimensional drawing does not show all details.

96529151 DME 940-4 AR 60 Hz

See Installation and Operating Instructions

Siehe Montage- und Betriebsanleitung

Voir Notice d'installation et d'entretien

Se monterings- og driftsinstruktion

All units are [in] unless otherwise presented.



Company name:

Created by:

Phone:

Date:

4/11/2019

Order Data:

Product name: DME 940-4 AR

Amount: 1

Product No.: 96529151

Total: Price on request
