


Count	Description																
1	<p>DME 940-4 B</p>  <p>Product photo could vary from the actual product</p> <p>Product No.: 96529168</p> <ul style="list-style-type: none"> · Compact positive displacement diaphragm dosing pump, with integrated variable speed motor drive, in an IP 65 plastic enclosure. · The pump is designed for optimum user-friendliness, accuracy and reliability, and is equipped with a logical control panel with one-touch buttons and a multi-language backlight display. · The capacity to be dosed in each function is set directly in gal, l, or ml per hour. · For enhanced accuracy, the pump can be calibrated to the actual installation by means of a simple calibration function. · The turndown ratio is 1 to 800 with the same accuracy and uniform dosage with reduced pulsation throughout the entire capacity range. · The pump is also equipped with a maximum capacity function (100%) that allows it to work for a preset time at max capacity to facilitate priming or ordinary maintenance, without modifying the pump's settings. <p>The liquid end is composed of:</p> <ul style="list-style-type: none"> · Pump head · PTFE-coated diaphragm · Ball valves · Manual bleed valve <p>Possible operating modes:</p> <ul style="list-style-type: none"> · Manual dosing with direct setting in gph, ml/hour, or l/hour <p>Other features:</p> <ul style="list-style-type: none"> · Electronic lock to prevent unauthorized setting changes · Anti-cavitation function for high-viscosity, gassing liquids or long suction lines · Maximum capacity limitation · Counters for numbers of pump strokes, hours of operation, and power on/off. · 14 optional display languages. · Overload protection <p>Controls:</p> <table> <tr> <td>Control variant:</td><td>B</td></tr> <tr> <td>Level control:</td><td>not integrated</td></tr> </table> <p>Liquid:</p> <table> <tr> <td>Pumped liquid:</td><td>Water</td></tr> <tr> <td>Selected liquid temperature:</td><td>68 °F</td></tr> <tr> <td>Density:</td><td>62.29 lb/ft³</td></tr> </table> <p>Technical:</p> <table> <tr> <td>Approvals on nameplate:</td><td>CSA, CE</td></tr> </table> <p>Materials:</p> <table> <tr> <td>Pump housing:</td><td>PVDF</td></tr> <tr> <td>Valve ball:</td><td>Glass</td></tr> </table>	Control variant:	B	Level control:	not integrated	Pumped liquid:	Water	Selected liquid temperature:	68 °F	Density:	62.29 lb/ft³	Approvals on nameplate:	CSA, CE	Pump housing:	PVDF	Valve ball:	Glass
Control variant:	B																
Level control:	not integrated																
Pumped liquid:	Water																
Selected liquid temperature:	68 °F																
Density:	62.29 lb/ft³																
Approvals on nameplate:	CSA, CE																
Pump housing:	PVDF																
Valve ball:	Glass																



Company name:

Created by:

Phone:

Date:

4/11/2019

Count	Description
	Gasket: FKM
	Installation:
	Maximum operating pressure: 58.02 psi
	Pump inlet: THREADED NPT 1 1/4"
	Pump outlet: THREADED NPT 1 1/4"
	Electrical data:
	Main frequency: 60 Hz
	Rated voltage: 1 x 120 V
	Rated current: 2.4 A
	Type of cable plug: USA,CANADA
	Others:
	Custom tariff no.: 8413.50.0050



Company name:

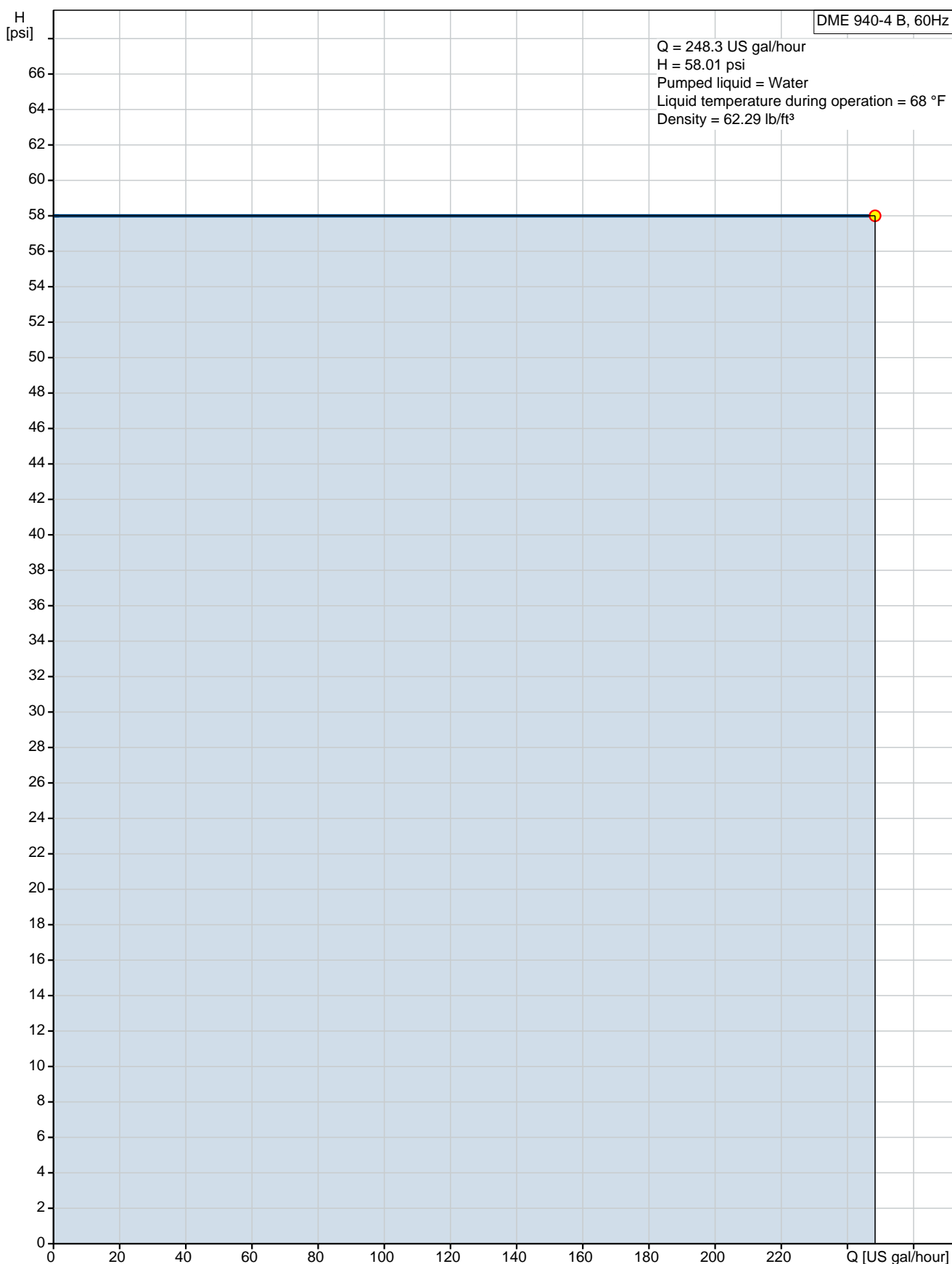
Created by:

Phone:

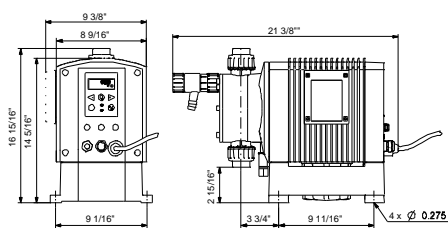
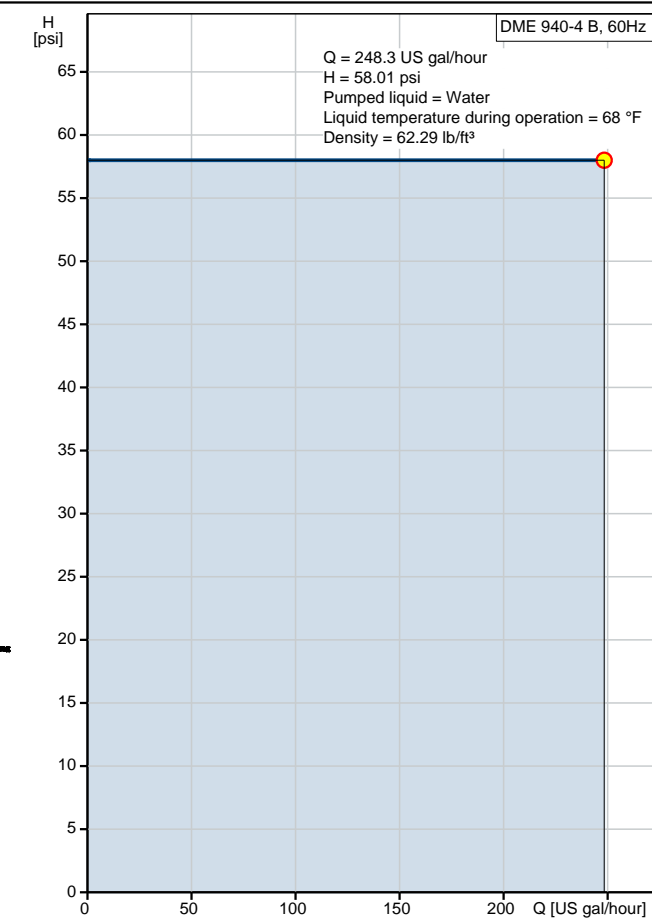
Date:

4/11/2019

96529168 DME 940-4 B 60 Hz



Description	Value
General information:	
Product name:	DME 940-4 B
Product No.:	96529168
EAN:	5700397157787
Technical:	
Max. capacity:	248.3 US gal/hour
Approvals on nameplate:	CSA, CE
Anti-cavitation:	function integrated
Venting valve:	integrated in pump housing
Valve:	Standard
Materials:	
Pump housing:	PVDF
Valve ball:	Glass
Gasket:	FKM
Installation:	
Maximum operating pressure:	58.02 psi
Pump inlet:	THREADED NPT 1 1/4"
Pump outlet:	THREADED NPT 1 1/4"
Liquid:	
Pumped liquid:	Water
Selected liquid temperature:	68 °F
Density:	62.29 lb/ft³
Electrical data:	
Main frequency:	60 Hz
Rated voltage:	1 x 120 V
Rated current:	2.4 A
Type of cable plug:	USA,CANADA
Controls:	
Control variant:	B
Control panel:	Side
Level control:	not integrated
Pulse control:	not integrated
Batch (puls):	not integrated
4-20 mA control:	not integrated
Capacity limit:	max. capacity limitation function integrated
Batch (timer):	not integrated
Other in/output:	no
Others:	
Custom tariff no.:	8413.50.0050



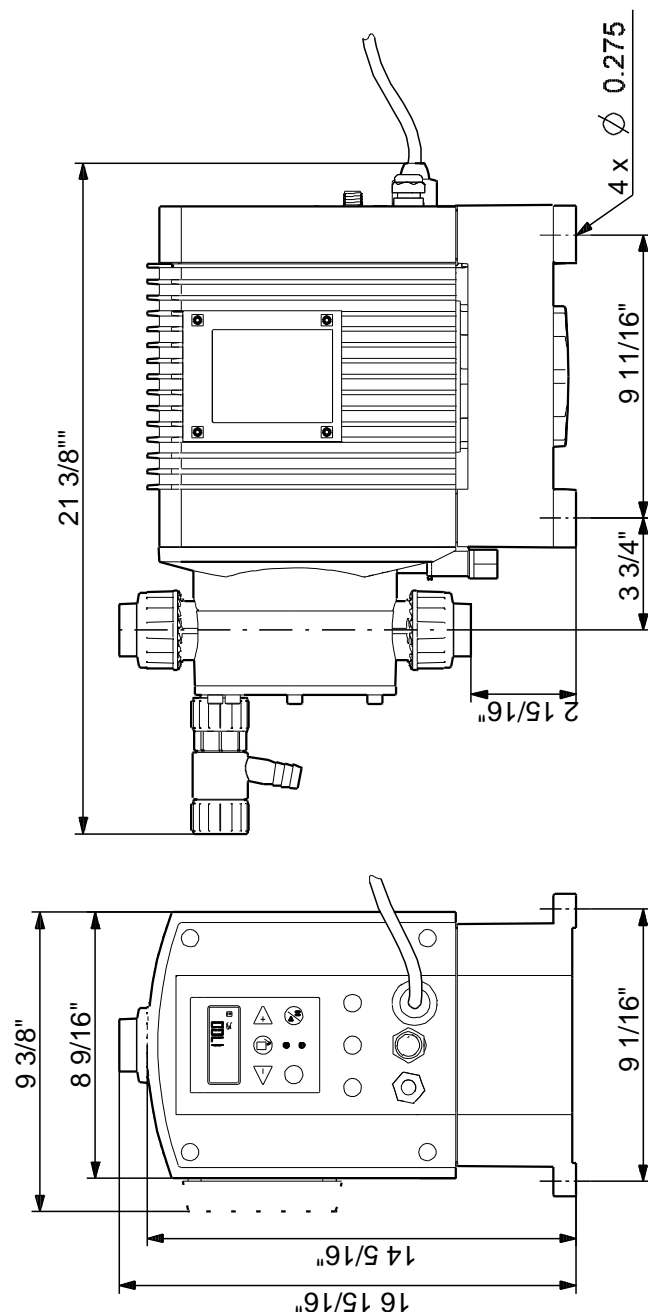
See Installation and Operating Instructions

Siehe Montage- und Betriebsanleitung

Voir Notice d'installation et d'entretien

Se monterings- og driftsinstruktion

96529168 DME 940-4 B 60 Hz



Note! All units are in [in] unless otherwise stated.

Disclaimer: This simplified dimensional drawing does not show all details.

96529168 DME 940-4 B 60 Hz

See Installation and Operating Instructions

Siehe Montage- und Betriebsanleitung

Voir Notice d'installation et d'entretien

Se monterings- og driftsinstruktion

All units are [in] unless otherwise presented.



Company name:

Created by:

Phone:

Date:

4/11/2019

Order Data:

Product name: DME 940-4 B

Amount: 1

Product No.: 96529168

Total: Price on request
