

PROJECT: _____	UNIT TAG: _____	QUANTITY: _____
REPRESENTATIVE: _____	TYPE OF SERVICE: _____	DATE: _____
ENGINEER: _____	SUBMITTED BY: _____	DATE: _____
CONTRACTOR: _____	APPROVED BY: _____	DATE: _____
	ORDER NO.: _____	DATE: _____

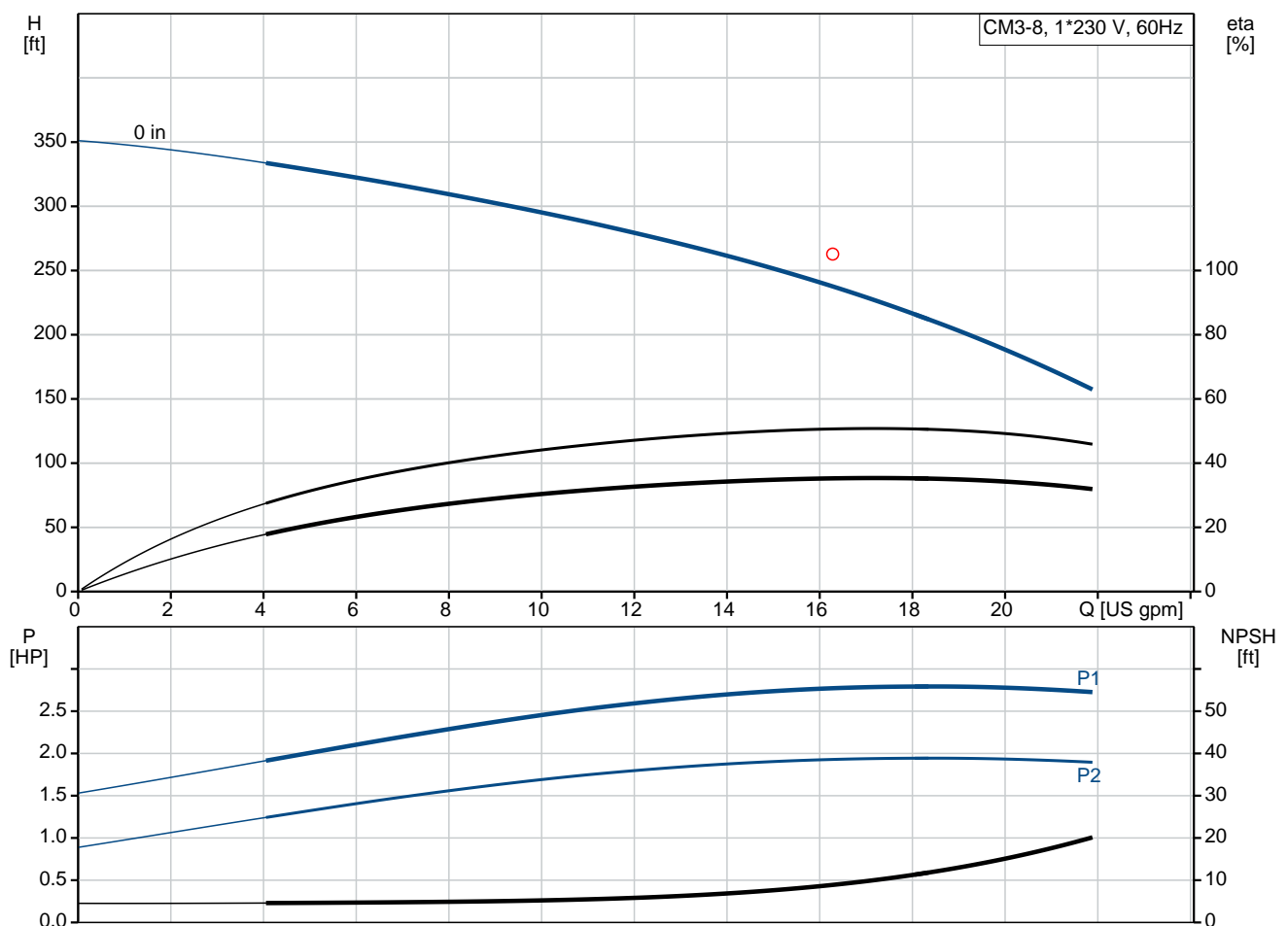
CM3-8

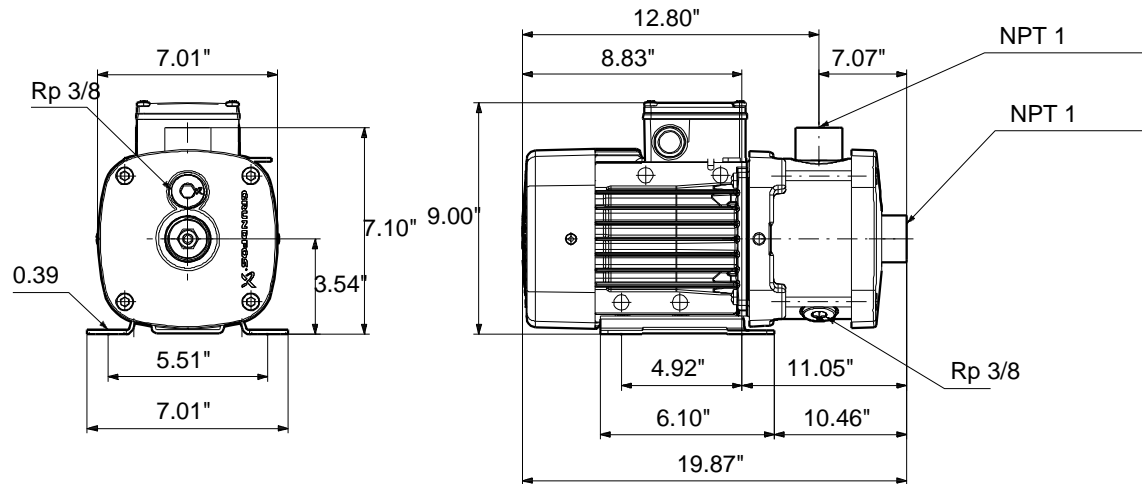


CM are reliable, quiet and compact horizontal end-suction pumps. The modular pump design makes it easy to make customised solutions. The CM pumps are available in cast iron and stainless steel

Product photo could vary from the actual product

Conditions of Service	Pump Data	Motor Data
Flow: _____	Maximum operating pressure: 232 psi	Rated power - P2: 2 HP
Head: _____	Liquid temperature range: -4 .. 194 °F	Rated voltage: 115/230 V
Efficiency: _____	Maximum ambient temperature: 131 °F	Main frequency: 60 Hz
Liquid: Water	Approvals: CE,CULUS,WRAS,ACS,TR,CURUS,EAC	Enclosure class: IP55
Temperature: 68 °F	Shaft seal: AQQE	Insulation class: F
NPSH required: ft	Flange standard: INTERNAL NPT THREAD	Motor protection: NO
Viscosity: _____	Product number: 96935607	Motor type: 90CC
Specific Gravity: 1.000		





Materials:

Pump housing: Stainless steel
DIN W.-Nr. 1.4401
AISI 316

Impeller: Stainless steel
DIN W.-Nr. 1.4401
AISI 316

Material code: G

Rubber: EPDM

Code for rubber: E

Tender Text

Product No.: [96935607](#)**CM3-8 A-S-G-E-AQQE**

CM is a compact horizontal multistage centrifugal pump, close-coupled with a:
1-phase, 115/230 V, 60 Hz Hz. Foot mounted motor.

The pump is with axial suction port and radial discharge port including a special designed mechanical shaft seal in the solution AQQE.

Shaft, impellers, chambers and filling plugs are made of stainless steel.

Suction and discharge are made of Stainless steel.

The CM can also operate as a CME by connecting the motor to a CUE. Please find more information in the CUE part of Win/WebCAPS.

Liquid:

Pumped liquid: Water
Liquid temperature range: -4 .. 194 °F
Liquid temperature during operation: 68 °F
Density: 62.29 lb/ft³

Technical:

Speed for pump data: 3480 rpm
Rated flow: 16.3 US gpm
Rated head: 262.8 ft
Primary shaft seal: AQQE
Approvals on nameplate: CE,CULUS,WRAS,ACS,TR,CURUS,EAC
Curve tolerance: ISO9906:2012 3B

Materials:

Pump housing: Stainless steel
DIN W.-Nr. 1.4401
AISI 316
Impeller: Stainless steel
DIN W.-Nr. 1.4401
AISI 316
Rubber: EPDM

Installation:

Maximum ambient temperature: 131 °F
Maximum operating pressure: 232 psi
Max pressure at stated temperature: 232 psi / 194 °F
Flange standard: INTERNAL NPT THREAD
Pump inlet: NPT 1
Pump outlet: NPT 1

Electrical data:

Motor type: 90CC
IE Efficiency class: NA
Rated power - P2: 2 HP



Company name:

Created by:

Phone:


Date:

2/20/2018

Main frequency: 60 Hz
Rated voltage: 1 x 115/230 V
Service factor: 1
Rated current: 18,8/9,8 A
Starting current: 400 %
Rated speed: 3360 rpm
Enclosure class (IEC 34-5): IP55
Insulation class (IEC 85): F

Others:

Minimum efficiency index, MEI : 0,7
Net weight: 54.3 lb
Gross weight: 59.8 lb

Position	Count	Description
	1	<p>CM3-8 A-S-G-E-AQQE</p>  <p>Product No.: 96935607</p> <p>CM is a compact horizontal multistage centrifugal pump, close-coupled with a: 1-phase, 115/230 V, 60 Hz Hz. Foot mounted motor. The pump is with axial suction port and radial discharge port including a special designed mechanical shaft seal in the solution AQQE. Shaft, impellers, chambers and filling plugs are made of stainless steel. Suction and discharge are made of Stainless steel.</p> <p>The CM can also operate as a CME by connecting the motor to a CUE. Please find more information in the CUE part of Win/WebCAPS.</p> <p>Liquid: Pumped liquid: Water Liquid temperature range: -4 .. 194 °F Liquid temperature during operation: 68 °F Density: 62.29 lb/ft³</p> <p>Technical: Speed for pump data: 3480 rpm Rated flow: 16.3 US gpm Rated head: 262.8 ft Primary shaft seal: AQQE Approvals on nameplate: CE,CULUS,WRAS,ACS,TR,CURUS,EAC Curve tolerance: ISO9906:2012 3B</p> <p>Materials: Pump housing: Stainless steel DIN W.-Nr. 1.4401 AISI 316 Impeller: Stainless steel DIN W.-Nr. 1.4401 AISI 316 Rubber: EPDM</p> <p>Installation: Maximum ambient temperature: 131 °F Maximum operating pressure: 232 psi Max pressure at stated temperature: 232 psi / 194 °F Flange standard: INTERNAL NPT THREAD Pump inlet: NPT 1 Pump outlet: NPT 1</p> <p>Electrical data: Motor type: 90CC IE Efficiency class: NA Rated power - P2: 2 HP Main frequency: 60 Hz</p>



Company name:

Created by:

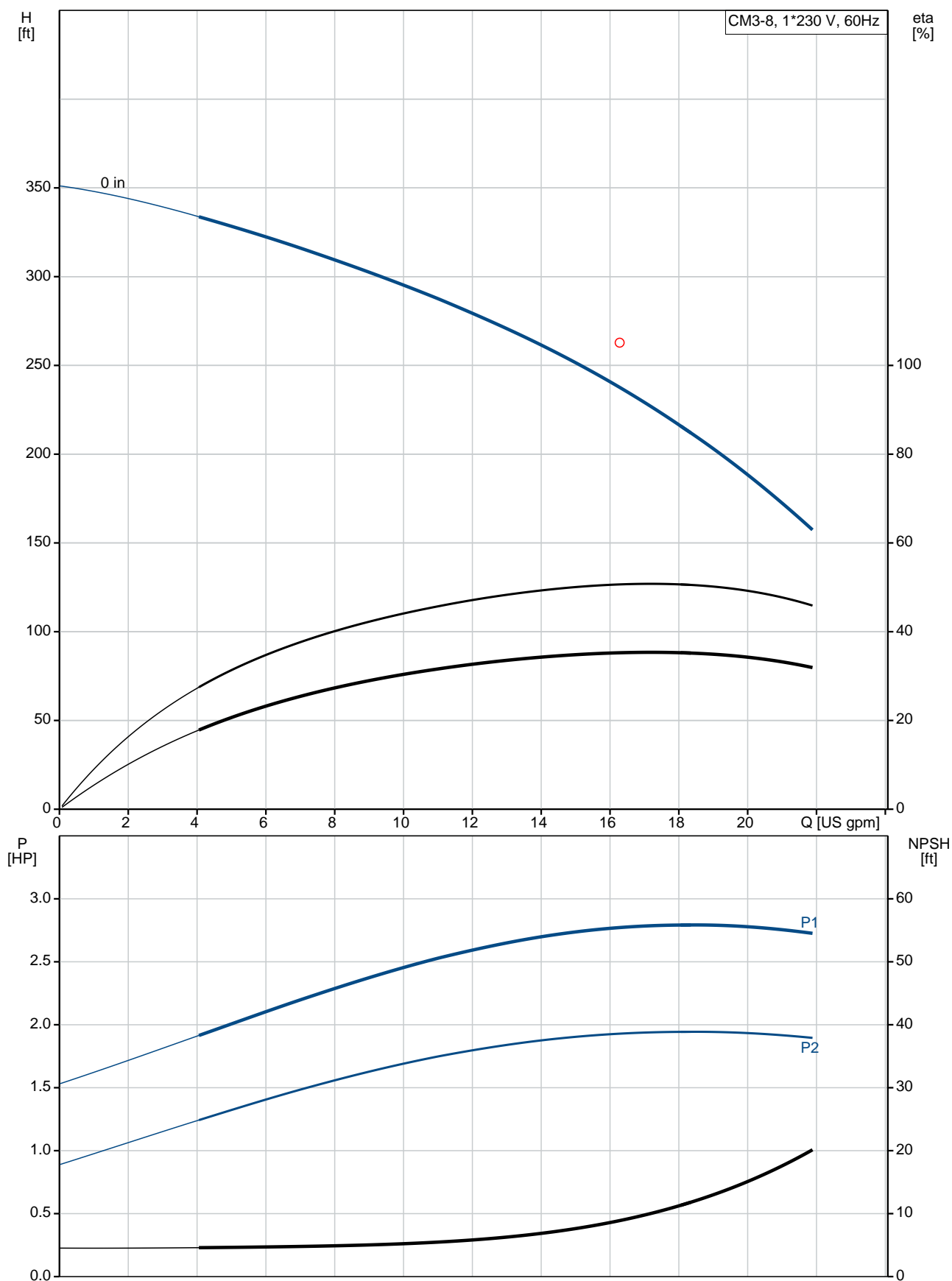
Phone:

Date:

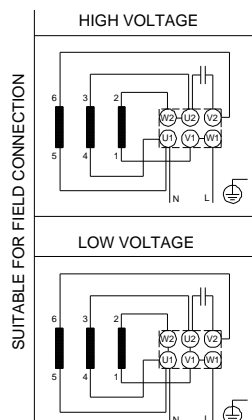
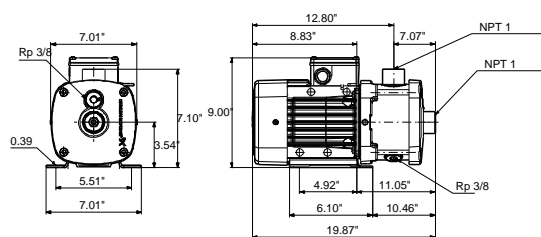
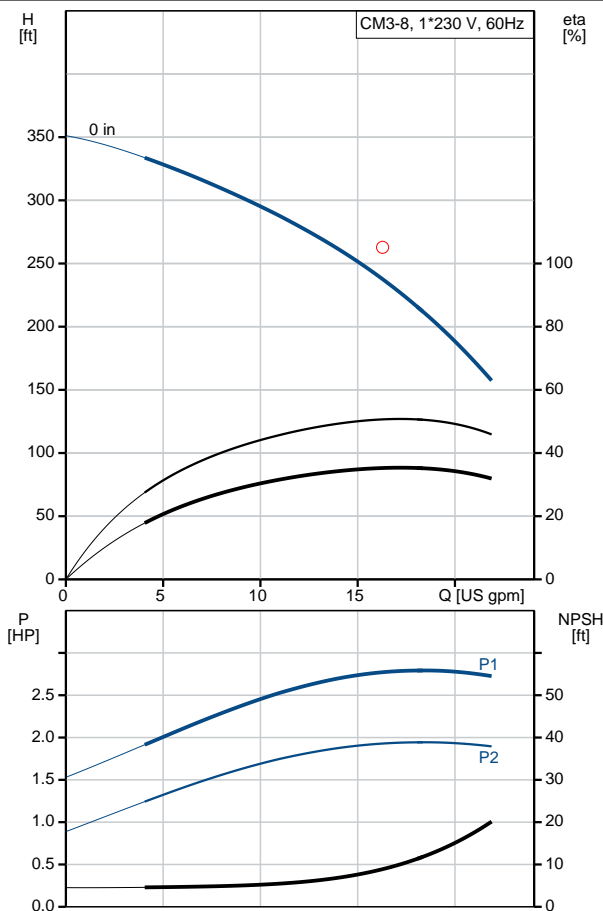
2/20/2018

Position	Count	Description
		<div>Rated voltage: 1 x 115/230 V</div> <div>Service factor: 1</div> <div>Rated current: 18,8/9,8 A</div> <div>Starting current: 400 %</div> <div>Rated speed: 3360 rpm</div> <div>Enclosure class (IEC 34-5): IP55</div> <div>Insulation class (IEC 85): F</div> <div>Others:</div> <div>Minimum efficiency index, MEI : 0,7</div> <div>Net weight: 54.3 lb</div> <div>Gross weight: 59.8 lb</div>

96935607 CM3-8 60 Hz



Description	Value
General information:	
Product name:	CM3-8 A-S-G-E-AQQE
Product No.:	96935607
EAN:	5700314055158
Technical:	
Speed for pump data:	3480 rpm
Rated flow:	16.3 US gpm
Rated head:	262.8 ft
Impellers:	8
Primary shaft seal:	AQQE
Approvals on nameplate:	CE,CULUS,WRAS,ACS,TR,CURUS,EAC
Curve tolerance:	ISO9906:2012 3B
Pump version:	A
Model:	A
Materials:	
Pump housing:	Stainless steel DIN W.-Nr. 1.4401 AISI 316
Impeller:	Stainless steel DIN W.-Nr. 1.4401 AISI 316
Material code:	G
Rubber:	EPDM
Code for rubber:	E
Installation:	
Maximum ambient temperature:	131 °F
Maximum operating pressure:	232 psi
Max pressure at stated temperature:	232 psi / 194 °F
Flange standard:	INTERNAL NPT THREAD
Connect code:	S
Pump inlet:	NPT 1
Pump outlet:	NPT 1
Liquid:	
Pumped liquid:	Water
Liquid temperature range:	-4 .. 194 °F
Liquid temperature during operation:	68 °F
Density:	62.29 lb/ft³
Electrical data:	
Motor type:	90CC
IE Efficiency class:	NA
Rated power - P2:	2 HP
Main frequency:	60 Hz
Rated voltage:	1 x 115/230 V
Service factor:	1
Rated current:	18,8/9,8 A
Starting current:	400 %
Rated speed:	3360 rpm
Enclosure class (IEC 34-5):	IP55
Insulation class (IEC 85):	F
Motor protection:	NO
Others:	
Minimum efficiency index, MEI :	0,7





Company name:

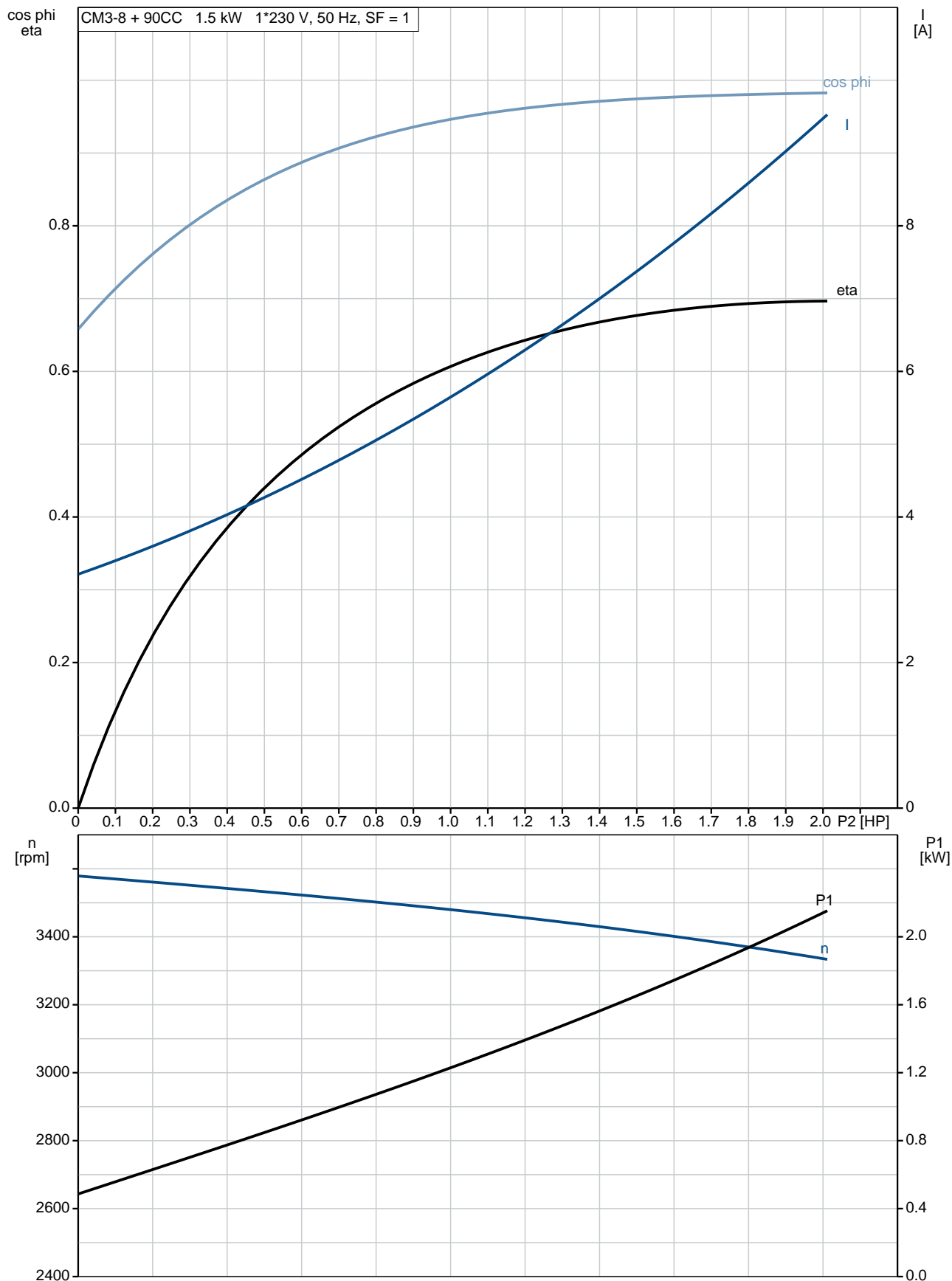
Created by:

Phone:

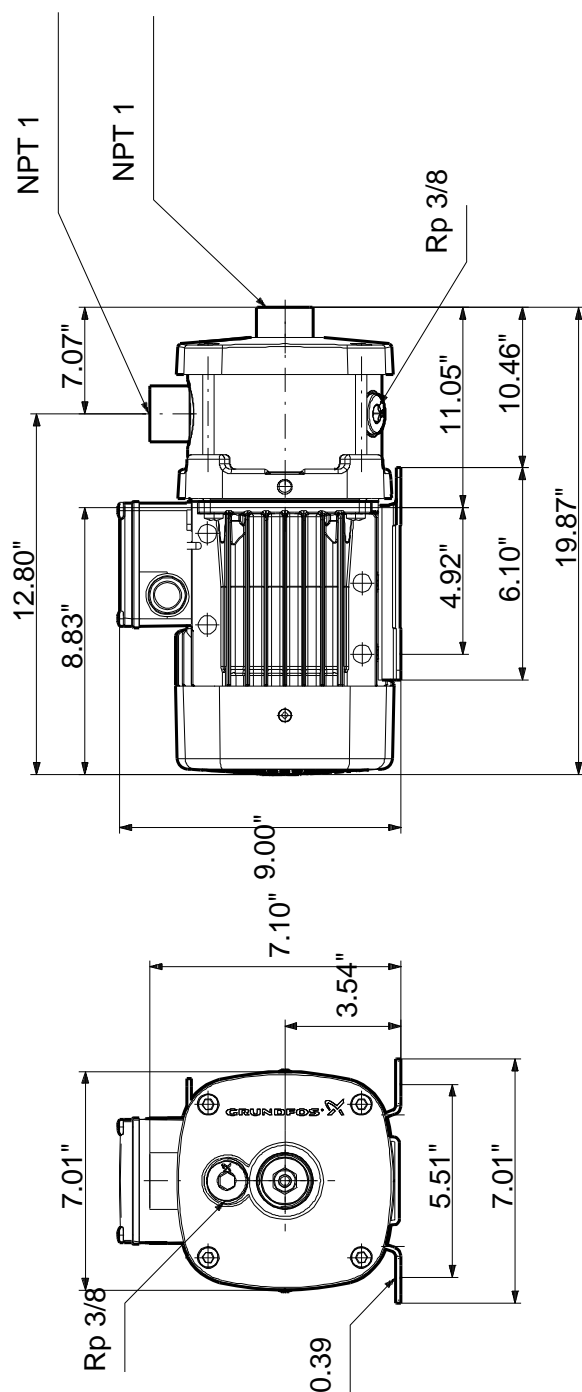
Date: 2/20/2018

Description	Value
Net weight:	54.3 lb
Gross weight:	59.8 lb

96935607 CM3-8 60 Hz



96935607 CM3-8 60 Hz



Note! All units are in [mm] unless otherwise stated.
Disclaimer: This simplified dimensional drawing does not show all details.



Company name:

Created by:

Phone:

Date:

2/20/2018

Order Data:

Product name: CM3-8 A-S-G-E-AQQE

Amount: 1

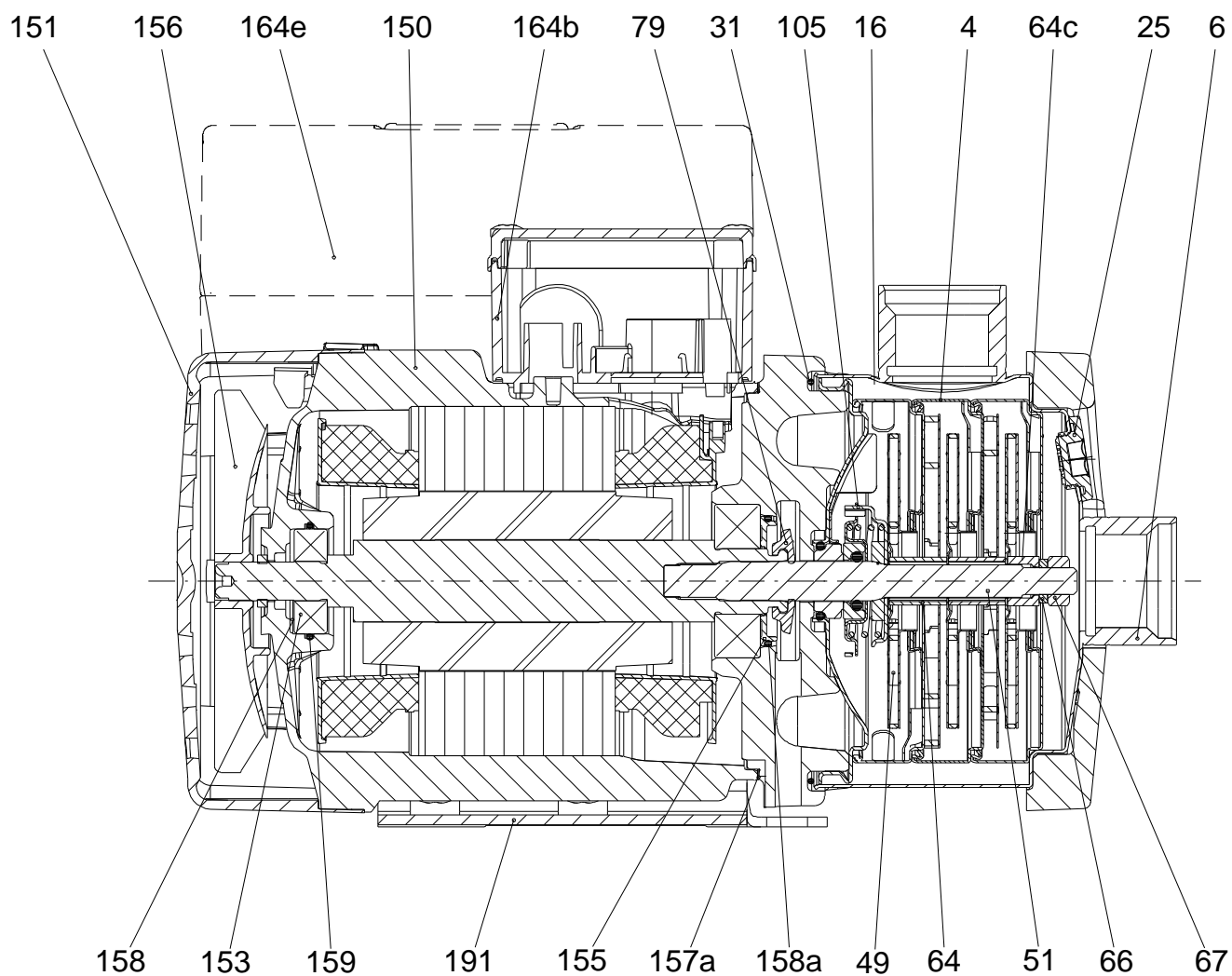
Product No.: 96935607

Total: Price on request

MG71/80



Sectional drawing



165x100

Parts list CM3-8, Prod number 96935607

Valid from 7.12.2011 (1150)

Position	Description	Annotation	Classification data	Part No.	Count	Unit
-	Chamber cpl.				5	pcs
4a	Intermediate chamber				1	
45	Neck ring				1	
65	Neck ring retainer				1	
-	Drain plug cpl.				2	pcs
11	O-ring		Diameter: 18,5		1	
			Material type: EPDM			
			Thickness: 2			
25	Plug				1	
-	Chamber w. bearing cpl.				1	pcs
4a	Intermediate chamber				1	
45	Neck ring				1	
65	Neck ring retainer				1	
	ML90CC				1	pcs
- 4.d	Chamber cpl.				1	pcs
	Chamber				1	
	Retainer for seal ring				1	
	Guide vane				6	
	Plate				1	
	Vane				1	
45	Neck ring				1	
65	Neck ring retainer				1	
- 4.e	Chamber cpl.				1	pcs
4a	Intermediate chamber				1	
45	Neck ring				1	
65	Neck ring retainer				1	
5a	Chamber, empty				1	pcs
6.a	Flange				1	pcs
16	Collar sleeve cpl.				1	pcs
26	Hex socket head cap screw		Length: 185		4	pcs
			Thread: M8			
28g	Cross recess countersunk screw		Designation: TORX		4	pcs
31	O-ring		Diameter: 114		1	pcs
			Material type: EPDM			
			Thickness: 3,9			
- 32	Cover				1	pcs
	Cover plate				1	
	Plate				1	
36	Lock nut		Thread: M8		1	pcs
47.a	Bearing ring				1	pcs
49	Impeller cpl.				8	pcs
51	Pump shaft		Diameter: D12		1	pcs
64	Spacing pipe				6	pcs
64.a	Spacing pipe				1	pcs
64.c	Clamp				1	pcs
66	Wedge lock washer				1	pcs
76	Nameplate				2	pcs
- 105	Shaft seal				1	pcs
102	O-ring		Diameter: 17,86		1	
			Material type: EPDM			
			Thickness: 2,62			
103	Seal ring, stationary				1	
104	Seal ring, rotating				1	



Company name:

Created by:

Phone:

Date:

2/20/2018

Position	Description	Annotation	Classification data	Part No.	Count	Unit
107	O-ring				1	
108	Compression spring				1	
111	Retainer				1	
112	Driver for shaft seal				1	
111.a	Stop ring				1	pcs
151	Fan cover				1	pcs
152	Pan head thread forming screw				4	pcs
156	Fan				1	pcs
191	Base plate				1	pcs