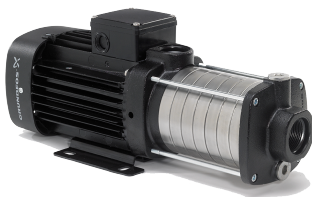


|                       |                        |                 |
|-----------------------|------------------------|-----------------|
| PROJECT: _____        | UNIT TAG: _____        | QUANTITY: _____ |
| REPRESENTATIVE: _____ | TYPE OF SERVICE: _____ | DATE: _____     |
| ENGINEER: _____       | SUBMITTED BY: _____    | DATE: _____     |
| CONTRACTOR: _____     | APPROVED BY: _____     | DATE: _____     |
|                       | ORDER NO.: _____       | DATE: _____     |

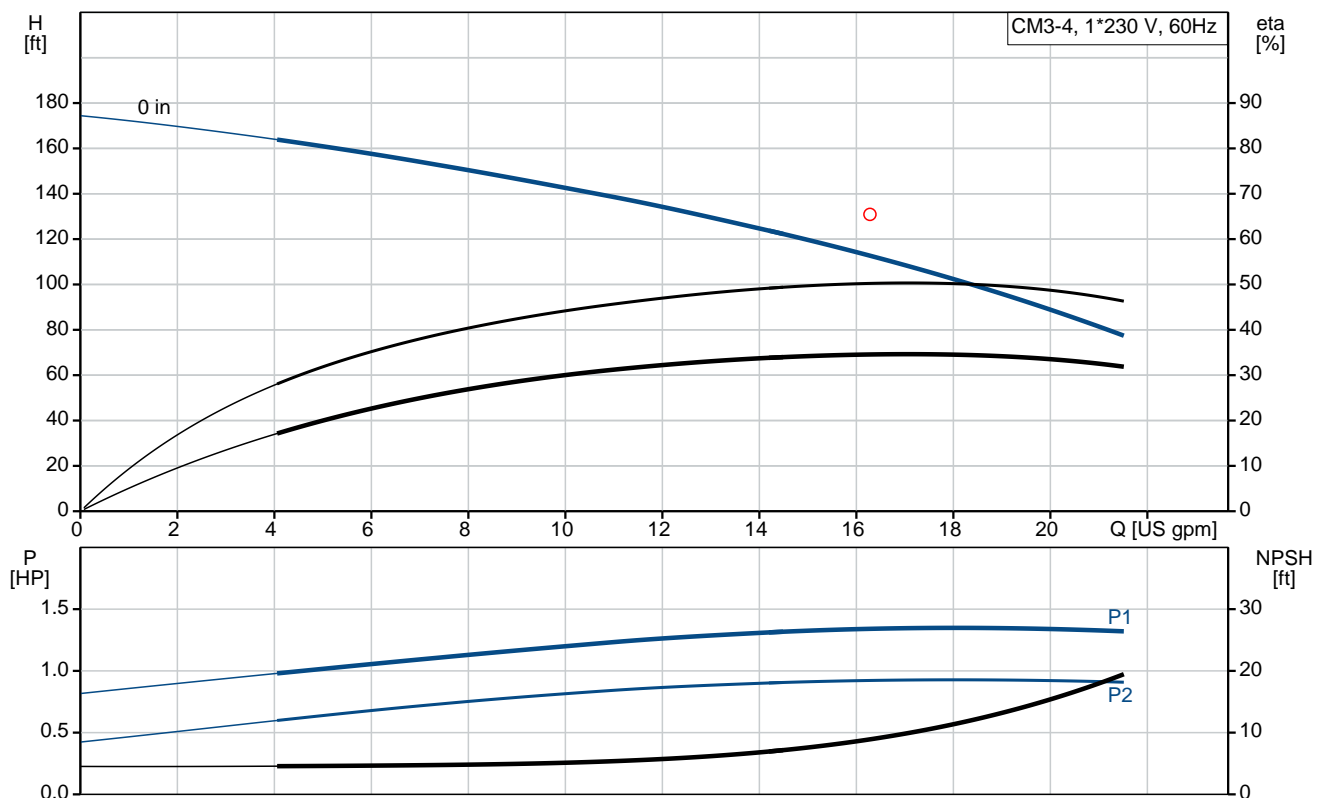
### CM3-4

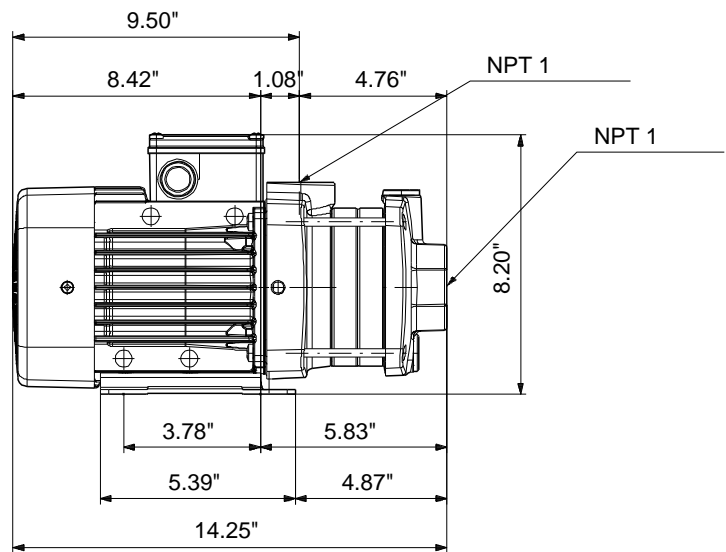
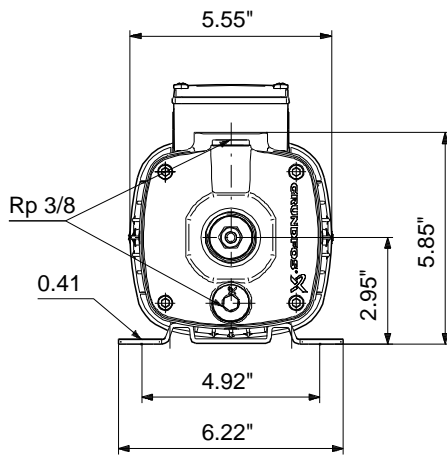


CM are reliable, quiet and compact horizontal end-suction pumps. The modular pump design makes it easy to make customised solutions. The CM pumps are available in cast iron and stainless steel

Product photo could vary from the actual product

| Conditions of Service   | Pump Data                                 | Motor Data                 |
|-------------------------|---|----------------------------|
| Flow: _____             | Maximum operating pressure: 145 psi       | Rated power - P2: 1.046 HP |
| Head: _____             | Liquid temperature range: -4 .. 194 °F    | Rated voltage: 115/230 V   |
| Efficiency: _____       | Maximum ambient temperature: 131 °F       | Main frequency: 60 Hz      |
| Liquid: Water           | Approvals: CE,CULUS,WRAS,ACS,TR,CURUS,EAC | Enclosure class: IP55      |
| Temperature: 68 °F      | Shaft seal: AQQV                          | Insulation class: F        |
| NPSH required: ft       | Flange standard: INTERNAL NPT THREAD      | Motor protection: NO       |
| Viscosity: _____        | Product number: 97568318                  | Motor type: 80AA           |
| Specific Gravity: 1.000 |   |                            |





**Materials:**

Pump housing: Cast iron  
EN-JL1030  
ASTM 30 B

Impeller: Stainless steel  
DIN W.-Nr. 1.4301  
AISI 304

Material code: A

Rubber: FKM

Code for rubber: V

## Tender Text

Product No.: [97568318](#)**CM3-4 A-S-A-V-AQQV**

CM is a compact horizontal multistage centrifugal pump, close-coupled with a:  
1-phase, 115/230 V, 60 Hz Hz. Foot mounted motor.

The pump is with axial suction port and radial discharge port including a special designed mechanical shaft seal in the solution AQQV.

Shaft, impellers, chambers and filling plugs are made of stainless steel.

Suction and discharge are made of Cast iron.

The CM can also operate as a CME by connecting the motor to a CUE. Please find more information in the CUE part of Win/WebCAPS.

**Liquid:**

Pumped liquid: Water  
Liquid temperature range: -4 .. 194 °F  
Liquid temperature during operation: 68 °F  
Density: 62.29 lb/ft³

**Technical:**

Speed for pump data: 3480 rpm  
Rated flow: 16.3 US gpm  
Rated head: 130.9 ft  
Primary shaft seal: AQQV  
Approvals on nameplate: CE,CULUS,WRAS,ACS,TR,CURUS,EAC  
Curve tolerance: ISO9906:2012 3B

**Materials:**

Pump housing: Cast iron  
EN-JL1030  
ASTM 30 B  
Impeller: Stainless steel  
DIN W.-Nr. 1.4301  
AISI 304  
Rubber: FKM

**Installation:**

Maximum ambient temperature: 131 °F  
Maximum operating pressure: 145 psi  
Max pressure at stated temperature: 145 psi / 194 °F  
Flange standard: INTERNAL NPT THREAD  
Pump inlet: NPT 1  
Pump outlet: NPT 1

**Electrical data:**

Motor type: 80AA  
IE Efficiency class: NA  
Rated power - P2: 1.046 HP



**Company name:**

**Created by:**

**Phone:**


**Date:**

2/20/2018

Main frequency: 60 Hz  
Rated voltage: 1 x 115/230 V  
Service factor: 1  
Rated current: 10,6/5,4 A  
Starting current: 300 %  
Rated speed: 3240 rpm  
Enclosure class (IEC 34-5): IP55  
Insulation class (IEC 85): F

**Others:**

Minimum efficiency index, MEI : 0,7  
Net weight: 30 lb  
Gross weight: 35.5 lb

| Position | Count | Description   |
|----------|-------|---|
|          | 1     | <p><b>CM3-4 A-S-A-V-AQQV</b></p>  <p>Product No.: <a href="#">97568318</a></p> <p>CM is a compact horizontal multistage centrifugal pump, close-coupled with a:<br/>1-phase, 115/230 V, 60 Hz Hz. Foot mounted motor.<br/>The pump is with axial suction port and radial discharge port including a special designed mechanical shaft seal in the solution AQQV.<br/>Shaft, impellers, chambers and filling plugs are made of stainless steel.<br/>Suction and discharge are made of Cast iron.</p> <p>The CM can also operate as a CME by connecting the motor to a CUE. Please find more information in the CUE part of Win/WebCAPS.</p> <p><b>Liquid:</b><br/> Pumped liquid: Water<br/> Liquid temperature range: -4 .. 194 °F<br/> Liquid temperature during operation: 68 °F<br/> Density: 62.29 lb/ft<sup>3</sup></p> <p><b>Technical:</b><br/> Speed for pump data: 3480 rpm<br/> Rated flow: 16.3 US gpm<br/> Rated head: 130.9 ft<br/> Primary shaft seal: AQQV<br/> Approvals on nameplate: CE,CULUS,WRAS,ACS,TR,CURUS,EAC<br/> Curve tolerance: ISO9906:2012 3B</p> <p><b>Materials:</b><br/> Pump housing: Cast iron<br/> EN-JL1030<br/> ASTM 30 B<br/> Impeller: Stainless steel<br/> DIN W.-Nr. 1.4301<br/> AISI 304<br/> Rubber: FKM</p> <p><b>Installation:</b><br/> Maximum ambient temperature: 131 °F<br/> Maximum operating pressure: 145 psi<br/> Max pressure at stated temperature: 145 psi / 194 °F<br/> Flange standard: INTERNAL NPT THREAD<br/> Pump inlet: NPT 1<br/> Pump outlet: NPT 1</p> <p><b>Electrical data:</b><br/> Motor type: 80AA<br/> IE Efficiency class: NA<br/> Rated power - P2: 1.046 HP<br/> Main frequency: 60 Hz</p> |



Company name:

Created by:

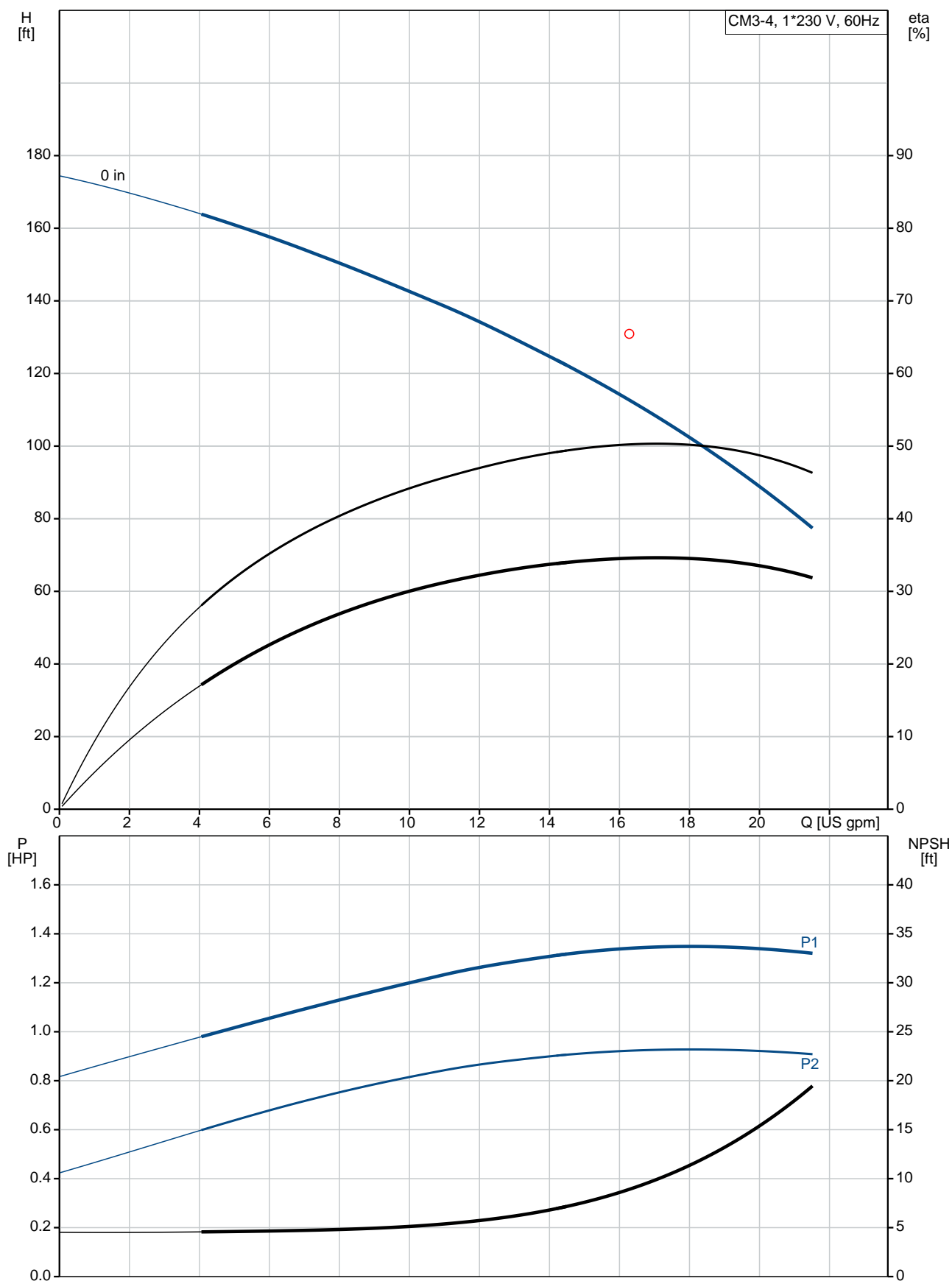
Phone:

Date:

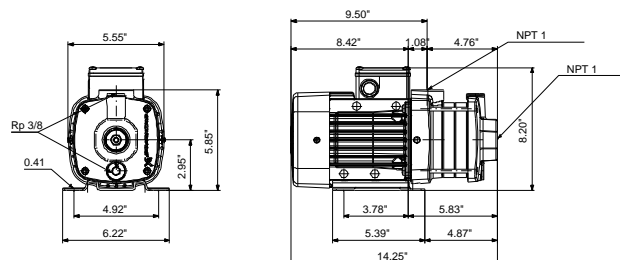
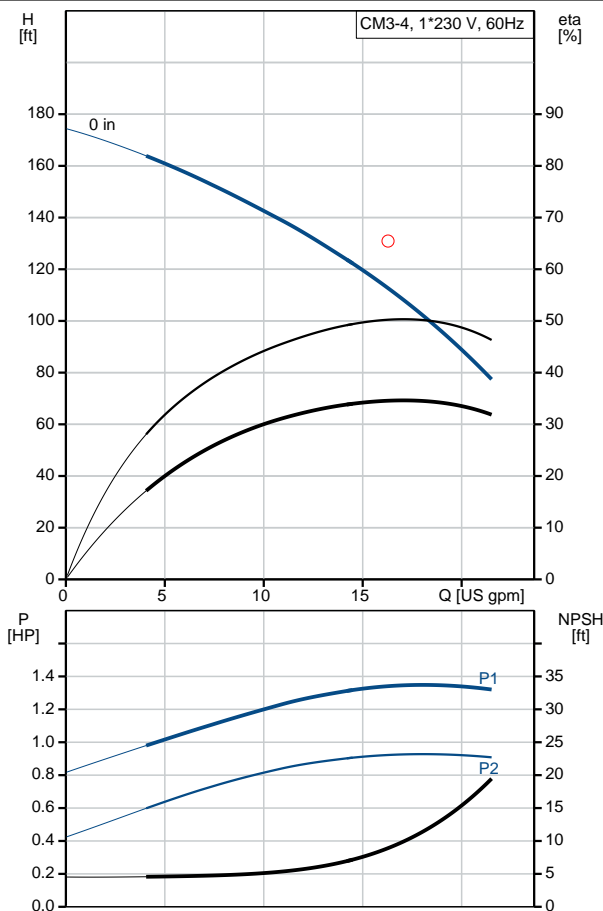
2/20/2018

| Position | Count | Description  |
|----------|-------|--|
|          |       | <div>Rated voltage: 1 x 115/230 V</div> <div>Service factor: 1</div> <div>Rated current: 10,6/5,4 A</div> <div>Starting current: 300 %</div> <div>Rated speed: 3240 rpm</div> <div>Enclosure class (IEC 34-5): IP55</div> <div>Insulation class (IEC 85): F</div> <div><b>Others:</b></div> <div>Minimum efficiency index, MEI : 0,7</div> <div>Net weight: 30 lb</div> <div>Gross weight: 35.5 lb</div> |

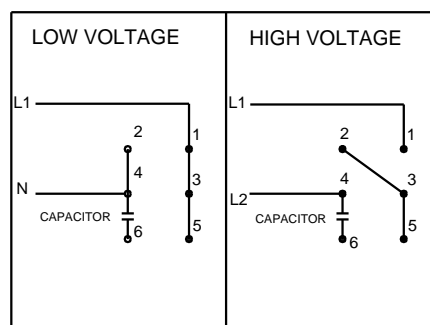
## 97568318 CM3-4 60 Hz



| Description                          | Value                          |
|--------------------------------------|--------------------------------|
| <b>General information:</b>          |                                |
| Product name:                        | CM3-4 A-S-A-V-AQQV             |
| Product No.:                         | 97568318                       |
| EAN:                                 | 5700318668798                  |
| <b>Technical:</b>                    |                                |
| Speed for pump data:                 | 3480 rpm                       |
| Rated flow:                          | 16.3 US gpm                    |
| Rated head:                          | 130.9 ft                       |
| Impellers:                           | 4                              |
| Primary shaft seal:                  | AQQV                           |
| Approvals on nameplate:              | CE,CULUS,WRAS,ACS,TR,CURUS,EAC |
| Curve tolerance:                     | ISO9906:2012 3B                |
| Pump version:                        | A                              |
| Model:                               | A                              |
| <b>Materials:</b>                    |                                |
| Pump housing:                        | Cast iron                      |
|                                      | EN-JL1030                      |
|                                      | ASTM 30 B                      |
| Impeller:                            | Stainless steel                |
|                                      | DIN W.-Nr. 1.4301              |
|                                      | AISI 304                       |
| Material code:                       | A                              |
| Rubber:                              | FKM                            |
| Code for rubber:                     | V                              |
| <b>Installation:</b>                 |                                |
| Maximum ambient temperature:         | 131 °F                         |
| Maximum operating pressure:          | 145 psi                        |
| Max pressure at stated temperature:  | 145 psi / 194 °F               |
| Flange standard:                     | INTERNAL NPT THREAD            |
| Connect code:                        | S                              |
| Pump inlet:                          | NPT 1                          |
| Pump outlet:                         | NPT 1                          |
| <b>Liquid:</b>                       |                                |
| Pumped liquid:                       | Water                          |
| Liquid temperature range:            | -4 .. 194 °F                   |
| Liquid temperature during operation: | 68 °F                          |
| Density:                             | 62.29 lb/ft³                   |
| <b>Electrical data:</b>              |                                |
| Motor type:                          | 80AA                           |
| IE Efficiency class:                 | NA                             |
| Rated power - P2:                    | 1.046 HP                       |
| Main frequency:                      | 60 Hz                          |
| Rated voltage:                       | 1 x 115/230 V                  |
| Service factor:                      | 1                              |
| Rated current:                       | 10,6/5,4 A                     |
| Starting current:                    | 300 %                          |
| Rated speed:                         | 3240 rpm                       |
| Enclosure class (IEC 34-5):          | IP55                           |
| Insulation class (IEC 85):           | F                              |
| Motor protection:                    | NO                             |
| <b>Others:</b>                       |                                |
| Minimum efficiency index, MEI :      | 0,7                            |



## SUITABLE FOR FIELD CONNECTION







Company name:

Created by:

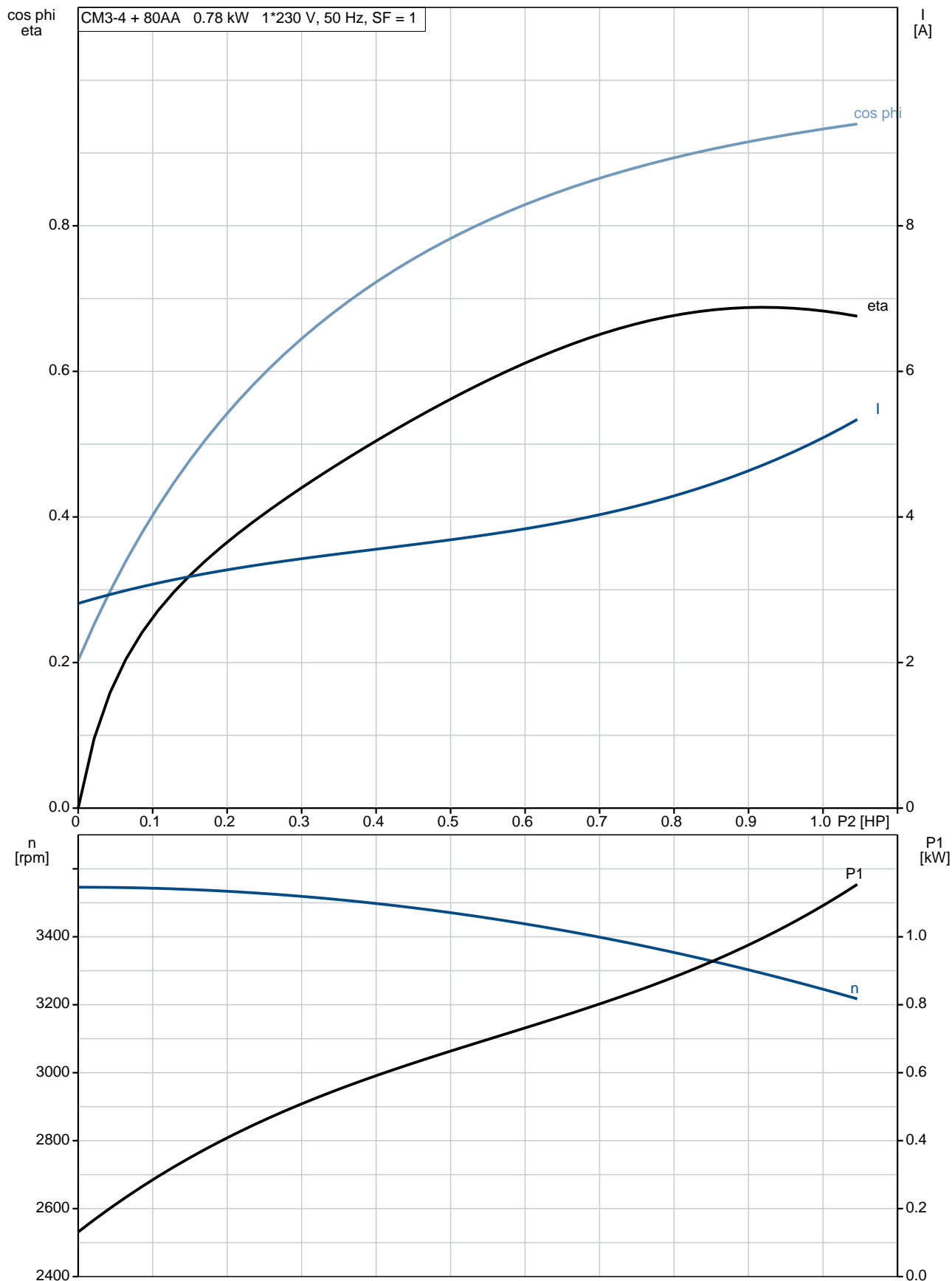
Phone:

Date:

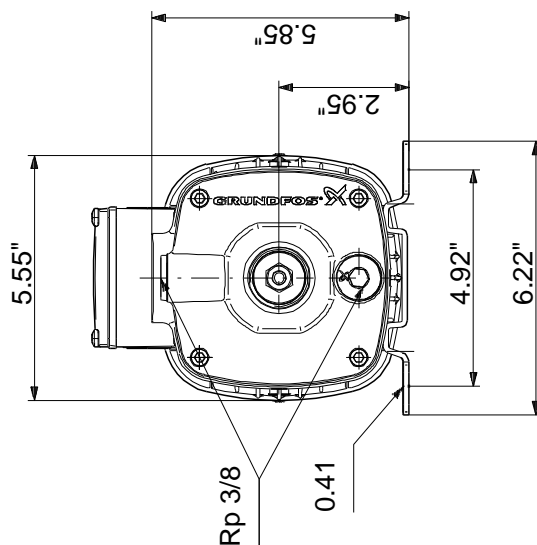
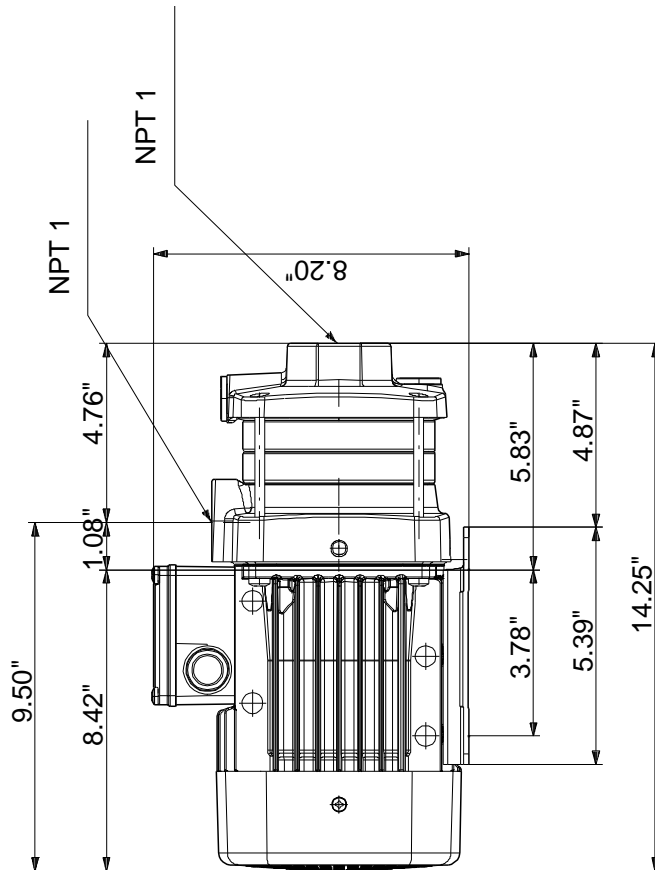
2/20/2018

| Description   | Value   |
|---------------|---------|
| Net weight:   | 30 lb   |
| Gross weight: | 35.5 lb |

## 97568318 CM3-4 60 Hz



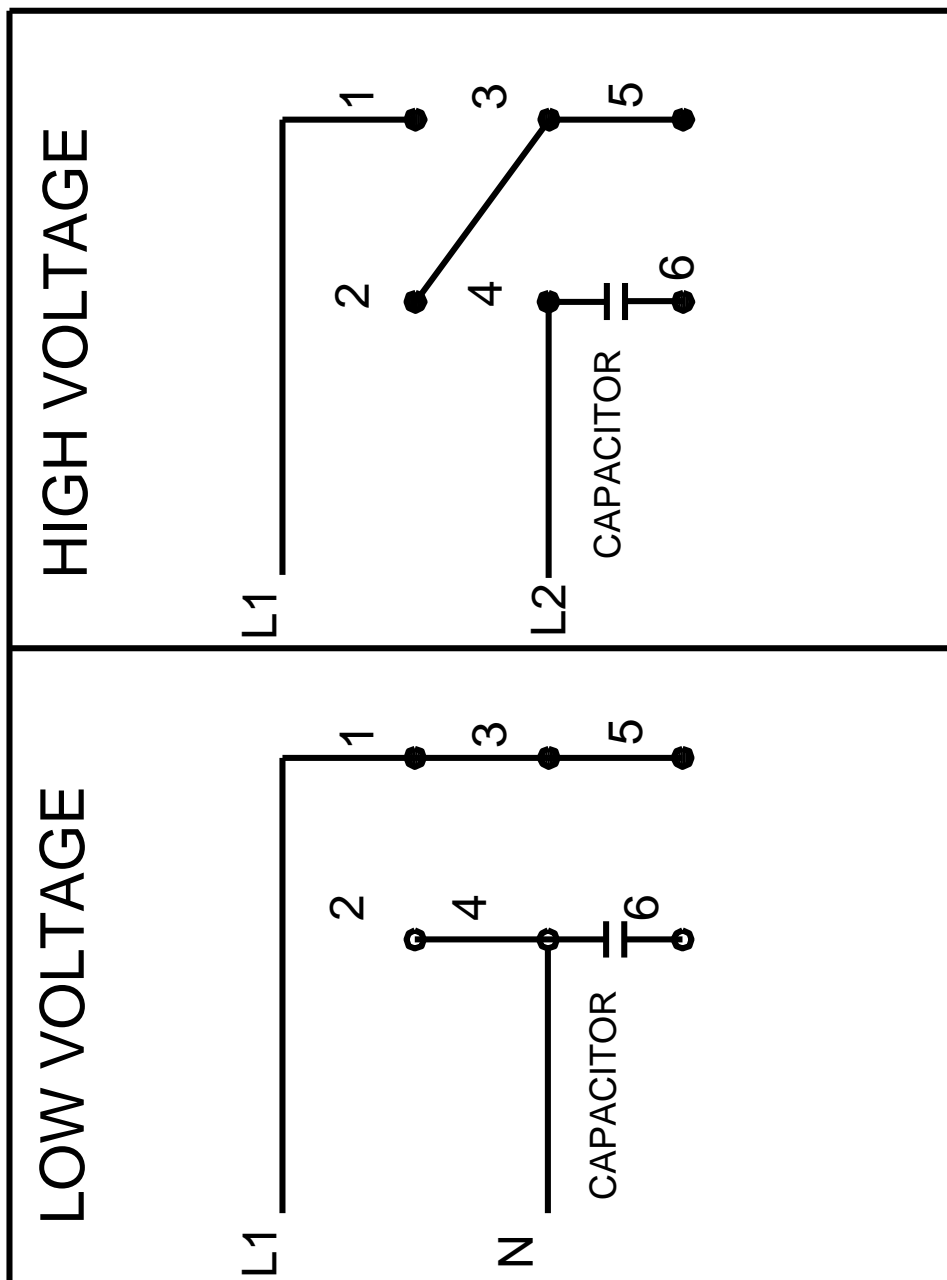
## 97568318 CM3-4 60 Hz



Note! All units are in [mm] unless otherwise stated.  
Disclaimer: This simplified dimensional drawing does not show all details.

**97568318 CM3-4 60 Hz**

# SUITABLE FOR FIELD CONNECTION





Company name:

Created by:

Phone:

Date:

2/20/2018

---

**Order Data:**

Product name: CM3-4 A-S-A-V-AQQV

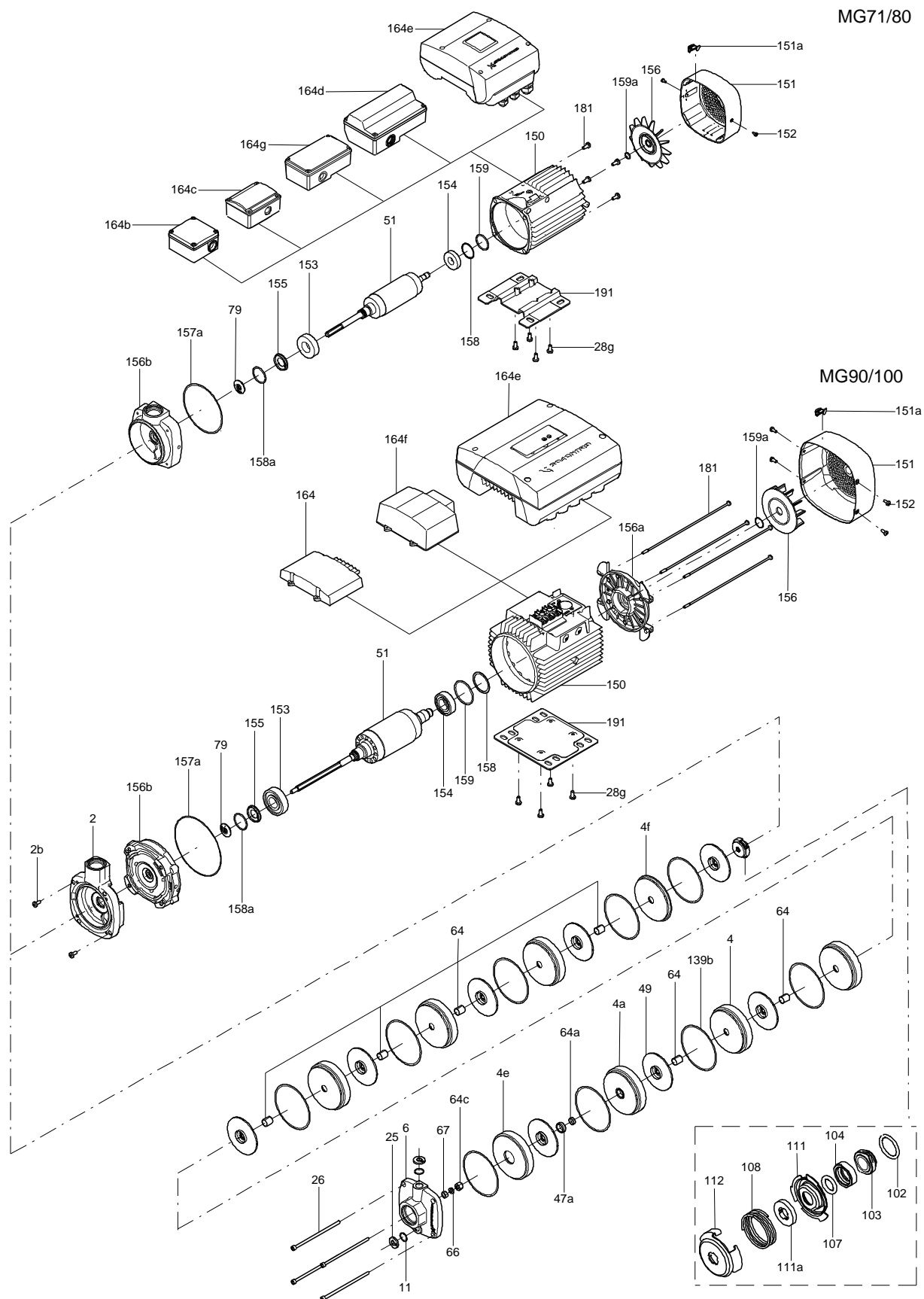
Amount: 1

Product No.: 97568318

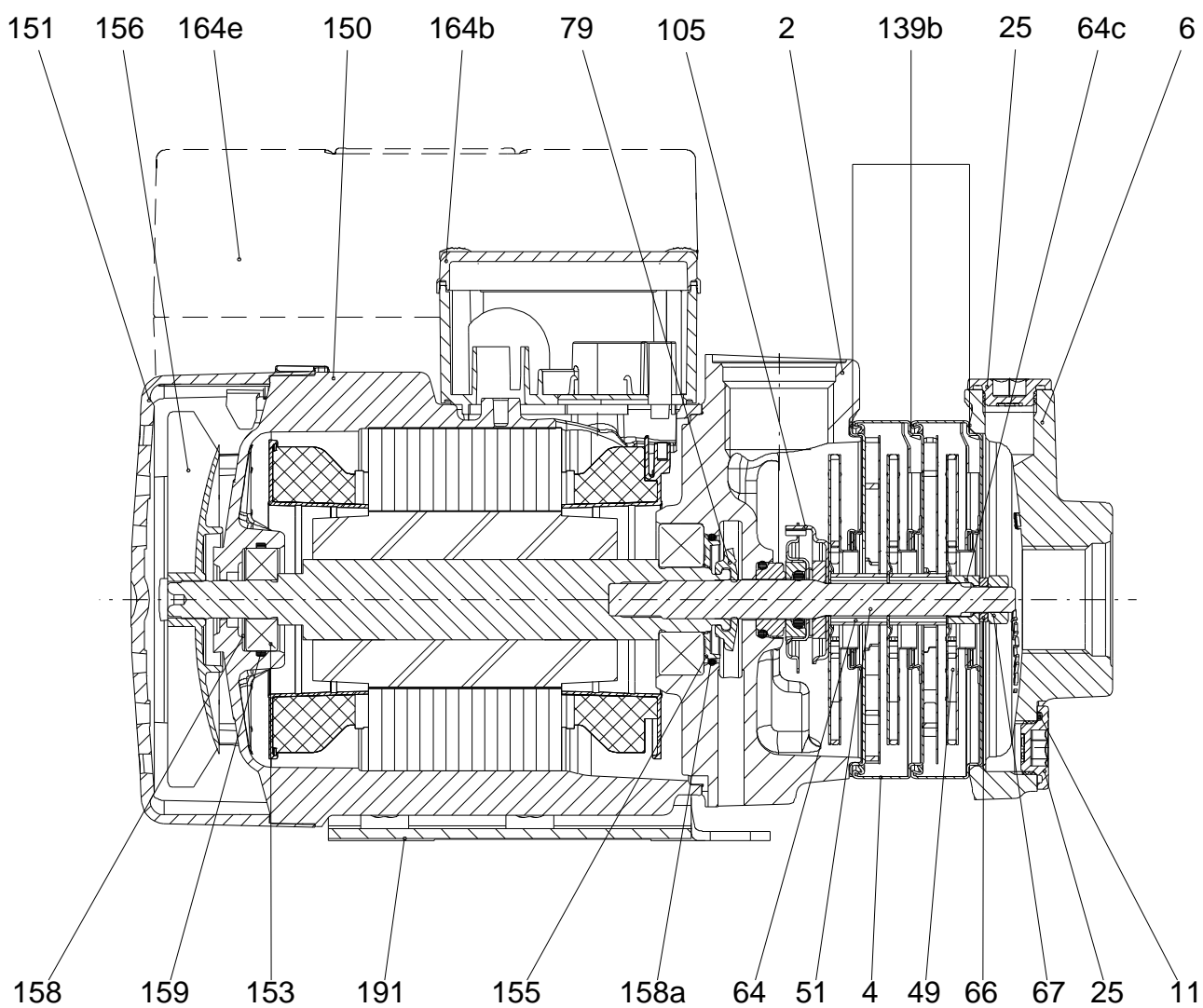
Total: Price on request

---

## Exploded view ( MG 71/80, MG 90/100)



## Sectional drawing



165x100

**Parts list CM3-4, Prod number 97568318**

**Valid from 7.12.2011 (1150)**

| Position | Description                    | Annotation | Classification data   | Part No. | Count | Unit |
|----------|--------------------------------|------------|-----------------------|----------|-------|------|
| -        | Drain plug cpl.                |            |                       |          | 2     | pcs  |
| 11       | O-ring                         |            | Diameter: 18,5        |          | 1     |      |
|          |                                |            | Material type: FKM    |          |       |      |
|          |                                |            | Thickness: 2          |          |       |      |
| 25       | Plug                           |            |                       |          | 1     |      |
|          | ML80AA                         |            |                       |          | 1     | pcs  |
|          | ML80AA                         |            |                       |          | 1     | pcs  |
| - 4      | Chamber cpl.                   |            |                       |          | 2     | pcs  |
|          | Guide vane                     |            |                       |          | 6     |      |
|          | Plate                          |            |                       |          | 1     |      |
|          | Retainer                       |            |                       |          | 1     |      |
|          | Intermediate chamber           |            |                       |          | 1     |      |
|          | Vane                           |            |                       |          | 1     |      |
| 45       | Neck ring                      |            |                       |          | 1     |      |
| 65       | Retainer                       |            |                       |          | 1     |      |
| - 4.f    | Chamber                        |            |                       |          | 1     | pcs  |
|          | Guide vane                     |            |                       |          | 6     |      |
|          | Plate                          |            |                       |          | 1     |      |
|          | Plate                          |            |                       |          | 1     |      |
|          | Retainer                       |            |                       |          | 1     |      |
| 45       | Neck ring                      |            |                       |          | 1     |      |
| 65       | Retainer                       |            |                       |          | 1     |      |
| - 5a     | Chamber cpl.                   |            |                       |          | 1     | pcs  |
|          | Retainer                       |            |                       |          | 1     |      |
|          | Intermediate chamber           |            |                       |          | 1     |      |
|          | Vane                           |            |                       |          | 1     |      |
| 45       | Neck ring                      |            |                       |          | 1     |      |
| 65       | Retainer                       |            |                       |          | 1     |      |
| 6        | Inlet part                     |            |                       |          | 1     | pcs  |
| 26       | Hex socket head cap screw      |            | Length: 95            |          | 4     | pcs  |
|          |                                |            | Thread: M06           |          |       |      |
| 28g      | Cross recess countersunk screw |            | Designation: TORX     |          | 4     | pcs  |
| 36       | Lock nut                       |            | Thread: M8            |          | 1     | pcs  |
| 37       | Gasket                         |            | Inner diameter: 103,0 |          | 5     | pcs  |
|          |                                |            | Outer diameter: 110,0 |          |       |      |
| 49       | Impeller cpl.                  |            |                       |          | 4     | pcs  |
| 51       | Pump shaft                     |            | Diameter: D12         |          | 1     | pcs  |
| 64       | Spacing pipe                   |            |                       |          | 3     | pcs  |
| 64.c     | Clamp                          |            |                       |          | 1     | pcs  |
| 66       | Wedge lock washer              |            |                       |          | 1     | pcs  |
| 76       | Nameplate                      |            |                       |          | 2     | pcs  |
| 111.a    | Stop ring                      |            |                       |          | 1     | pcs  |
| 151      | Fan cover                      |            |                       |          | 1     | pcs  |
| 152      | Pan head thread forming screw  |            |                       |          | 2     | pcs  |
| 156      | Fan                            |            |                       |          | 1     | pcs  |
| 191      | Base plate                     |            |                       |          | 1     | pcs  |