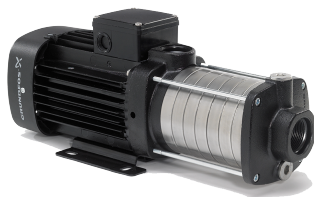


PROJECT: _____	UNIT TAG: _____	QUANTITY: _____
REPRESENTATIVE: _____	TYPE OF SERVICE: _____	DATE: _____
ENGINEER: _____	SUBMITTED BY: _____	DATE: _____
CONTRACTOR: _____	APPROVED BY: _____	DATE: _____
	ORDER NO.: _____	DATE: _____

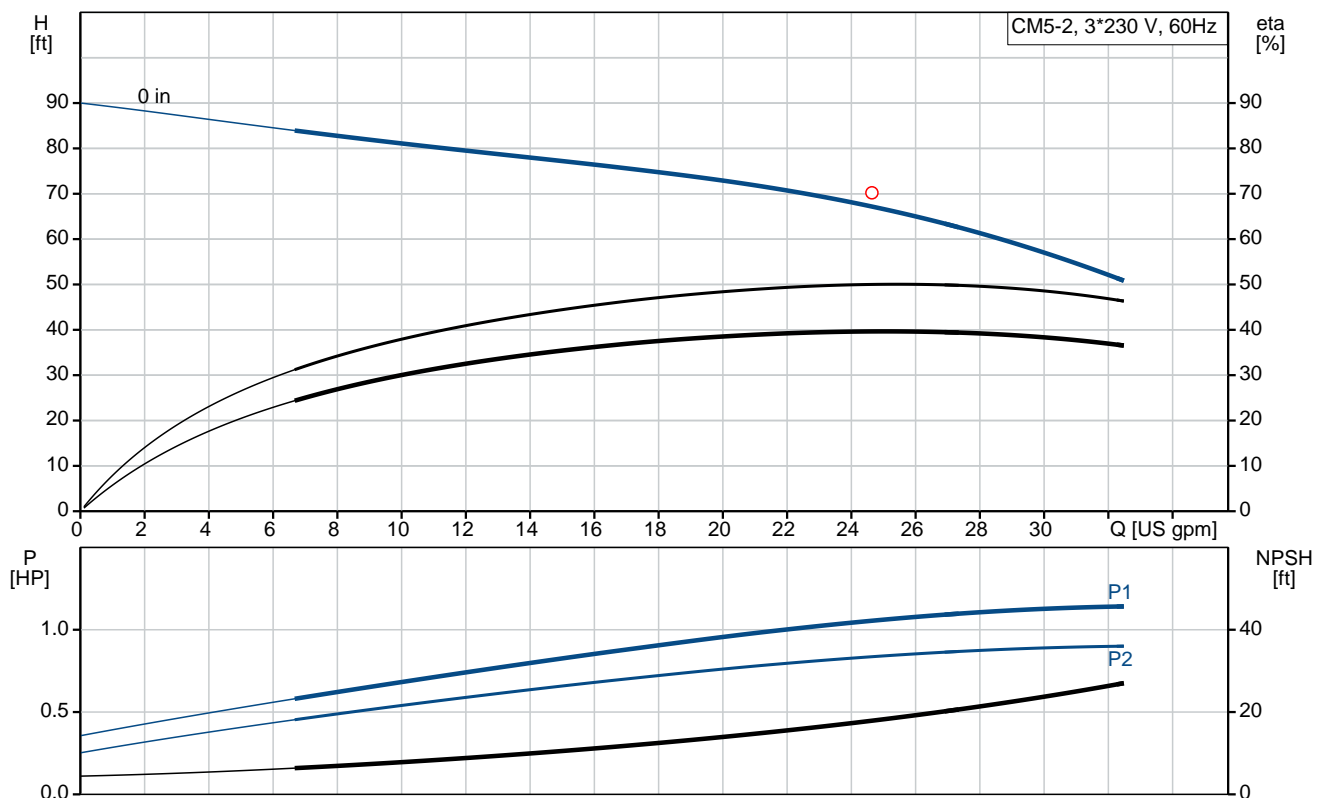
CM5-2

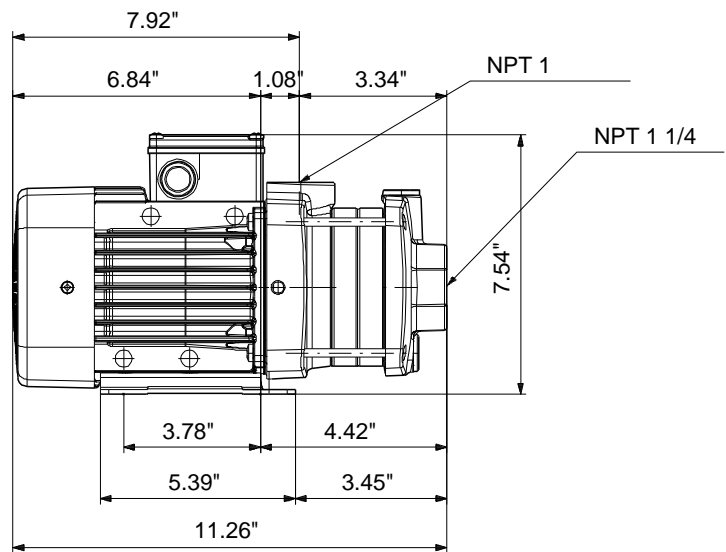
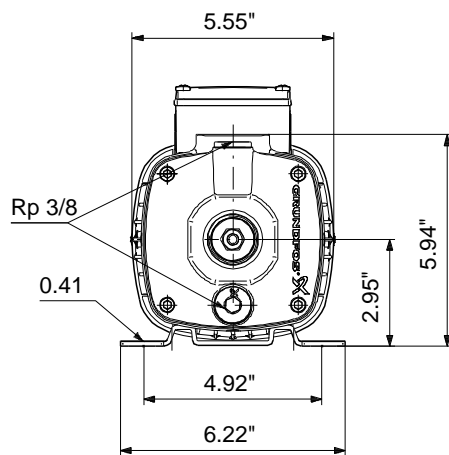


CM are reliable, quiet and compact horizontal end-suction pumps. The modular pump design makes it easy to make customised solutions. The CM pumps are available in cast iron and stainless steel

Product photo could vary from the actual product

Conditions of Service	Pump Data	Motor Data
Flow: _____	Maximum operating pressure: 145 psi	Rated power - P2: 0.992 HP
Head: _____	Liquid temperature range: -4 .. 194 °F	Rated voltage: 208-230YY/440-480Y V
Efficiency: _____	Maximum ambient temperature: 131 °F	Main frequency: 60 Hz
Liquid: Water	Approvals: CE,CULUS,WRAS,ACS,TR,CURUS,EAC	Enclosure class: IP55
Temperature: 68 °F	Shaft seal: AQQE	Insulation class: F
NPSH required: ft	Flange standard: INTERNAL NPT THREAD	Motor protection: NO
Viscosity: _____	Product number: 97568449	Motor type: 71BA
Specific Gravity: 1.000		Motor_efficiency: NA %





Materials:

Pump housing: Cast iron
EN-JL1030
ASTM 30 B

Impeller: Stainless steel
DIN W.-Nr. 1.4301
AISI 304

Material code: A

Rubber: EPDM

Code for rubber: E

Tender Text

Product No.: [97568449](#)**CM5-2 A-S-A-E-AQQE**

CM is a compact horizontal multistage centrifugal pump, close-coupled with a: 3-phase, 208-230Y/440-480Y V, 60 Hz Hz. Foot mounted motor.

The pump is with axial suction port and radial discharge port including a special designed mechanical shaft seal in the solution AQQE.

Shaft, impellers, chambers and filling plugs are made of stainless steel.

Suction and discharge are made of Cast iron.

The CM can also operate as a CME by connecting the motor to a CUE. Please find more information in the CUE part of Win/WebCAPS.

Liquid:

Pumped liquid: Water
Liquid temperature range: -4 .. 194 °F
Liquid temperature during operation: 68 °F
Density: 62.29 lb/ft³

Technical:

Speed for pump data: 3480 rpm
Rated flow: 24.7 US gpm
Rated head: 70.21 ft
Primary shaft seal: AQQE
Approvals on nameplate: CE,CULUS,WRAS,ACS,TR,CURUS,EAC
Curve tolerance: ISO9906:2012 3B

Materials:

Pump housing: Cast iron
EN-JL1030
ASTM 30 B
Impeller: Stainless steel
DIN W.-Nr. 1.4301
AISI 304
Rubber: EPDM

Installation:

Maximum ambient temperature: 131 °F
Maximum operating pressure: 145 psi
Max pressure at stated temperature: 145 psi / 194 °F
Flange standard: INTERNAL NPT THREAD
Pump inlet: NPT 1 1/4
Pump outlet: NPT 1

Electrical data:

Motor type: 71BA
IE Efficiency class: NA
Rated power - P2: 0.992 HP



Company name:

Created by:

Phone:


Date:

2/20/2018

Main frequency: 60 Hz
Rated voltage: 3 x 208-230YY/440-480Y V
Service factor: 1
Rated current: 3,4-3,6/1,7-1,8 A
Starting current: 590-650 %
Rated speed: 3220-3370 rpm
Motor efficiency at full load: NA %
Enclosure class (IEC 34-5): IP55
Insulation class (IEC 85): F

Others:

Minimum efficiency index, MEI : 0,7
Net weight: 25.5 lb
Gross weight: 31 lb

Position	Count	Description
	1	<p>CM5-2 A-S-A-E-AQQE</p>  <p>Product No.: 97568449</p> <p>CM is a compact horizontal multistage centrifugal pump, close-coupled with a: 3-phase, 208-230YY/440-480Y V, 60 Hz Hz. Foot mounted motor. The pump is with axial suction port and radial discharge port including a special designed mechanical shaft seal in the solution AQQE. Shaft, impellers, chambers and filling plugs are made of stainless steel. Suction and discharge are made of Cast iron.</p> <p>The CM can also operate as a CME by connecting the motor to a CUE. Please find more information in the CUE part of Win/WebCAPS.</p> <p>Liquid: Pumped liquid: Water Liquid temperature range: -4 .. 194 °F Liquid temperature during operation: 68 °F Density: 62.29 lb/ft³</p> <p>Technical: Speed for pump data: 3480 rpm Rated flow: 24.7 US gpm Rated head: 70.21 ft Primary shaft seal: AQQE Approvals on nameplate: CE,CULUS,WRAS,ACS,TR,CURUS,EAC Curve tolerance: ISO9906:2012 3B</p> <p>Materials: Pump housing: Cast iron EN-JL1030 ASTM 30 B Impeller: Stainless steel DIN W.-Nr. 1.4301 AISI 304 Rubber: EPDM</p> <p>Installation: Maximum ambient temperature: 131 °F Maximum operating pressure: 145 psi Max pressure at stated temperature: 145 psi / 194 °F Flange standard: INTERNAL NPT THREAD Pump inlet: NPT 1 1/4 Pump outlet: NPT 1</p> <p>Electrical data: Motor type: 71BA IE Efficiency class: NA Rated power - P2: 0.992 HP Main frequency: 60 Hz</p>



Company name:

Created by:

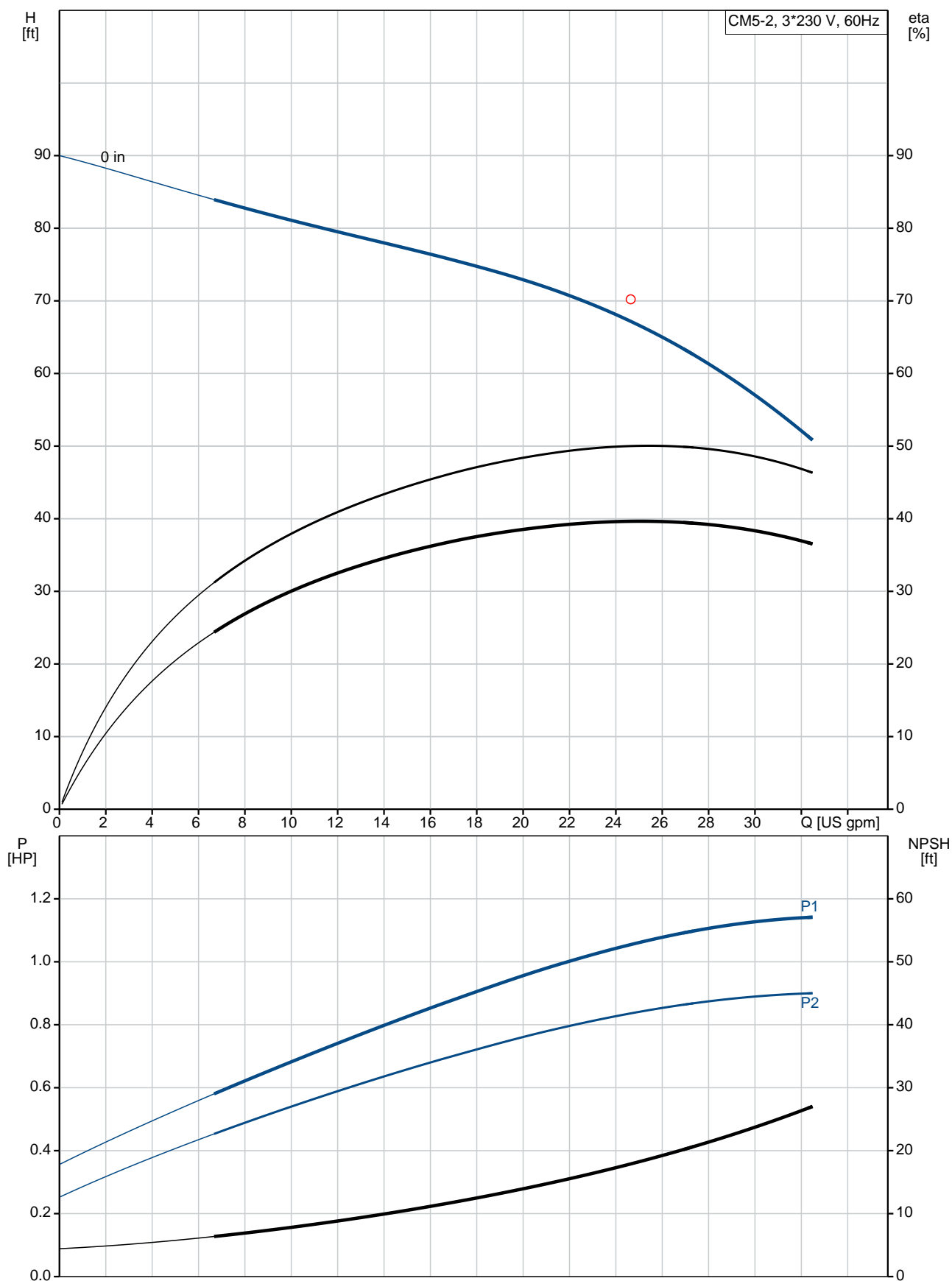
Phone:

Date:

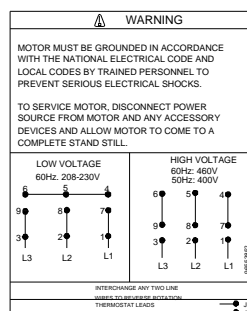
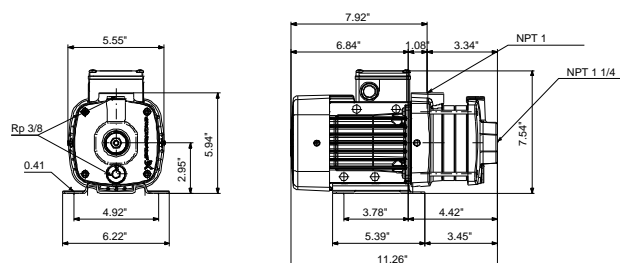
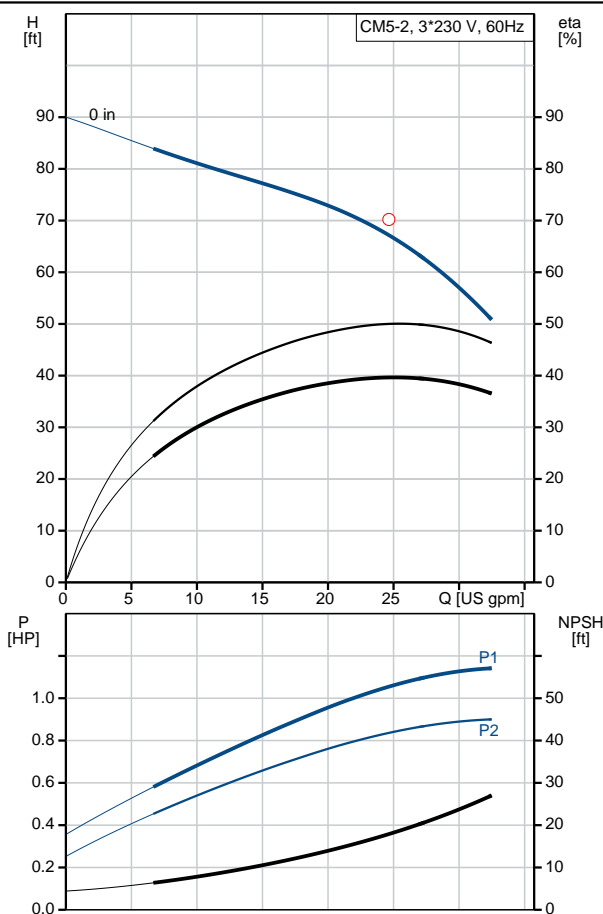
2/20/2018

Position	Count	Description
		<p>Rated voltage: 3 x 208-230YY/440-480Y V</p> <p>Service factor: 1</p> <p>Rated current: 3,4-3,6/1,7-1,8 A</p> <p>Starting current: 590-650 %</p> <p>Rated speed: 3220-3370 rpm</p> <p>Motor efficiency at full load: NA %</p> <p>Enclosure class (IEC 34-5): IP55</p> <p>Insulation class (IEC 85): F</p> <p>Others:</p> <p>Minimum efficiency index, MEI : 0,7</p> <p>Net weight: 25.5 lb</p> <p>Gross weight: 31 lb</p>

97568449 CM5-2 60 Hz



Description	Value
General information:	
Product name:	CM5-2 A-S-A-E-AQQE
Product No.:	97568449
EAN:	5700318670104
Technical:	
Speed for pump data:	3480 rpm
Rated flow:	24.7 US gpm
Rated head:	70.21 ft
Impellers:	2
Primary shaft seal:	AQQE
Approvals on nameplate:	CE,CULUS,WRAS,ACS,TR,CURUS,EAC
Curve tolerance:	ISO9906:2012 3B
Pump version:	A
Model:	A
Materials:	
Pump housing:	Cast iron
	EN-JL1030
	ASTM 30 B
Impeller:	Stainless steel
	DIN W.-Nr. 1.4301
	AISI 304
Material code:	A
Rubber:	EPDM
Code for rubber:	E
Installation:	
Maximum ambient temperature:	131 °F
Maximum operating pressure:	145 psi
Max pressure at stated temperature:	145 psi / 194 °F
Flange standard:	INTERNAL NPT THREAD
Connect code:	S
Pump inlet:	NPT 1 1/4
Pump outlet:	NPT 1
Liquid:	
Pumped liquid:	Water
Liquid temperature range:	-4 .. 194 °F
Liquid temperature during operation:	68 °F
Density:	62.29 lb/ft³
Electrical data:	
Motor type:	71BA
IE Efficiency class:	NA
Rated power - P2:	0.992 HP
Main frequency:	60 Hz
Rated voltage:	3 x 208-230YY/440-480Y V
Service factor:	1
Rated current:	3,4-3,6/1,7-1,8 A
Starting current:	590-650 %
Rated speed:	3220-3370 rpm
Motor efficiency at full load:	NA %
Enclosure class (IEC 34-5):	IP55
Insulation class (IEC 85):	F
Motor protection:	NO
Others:	





Company name:

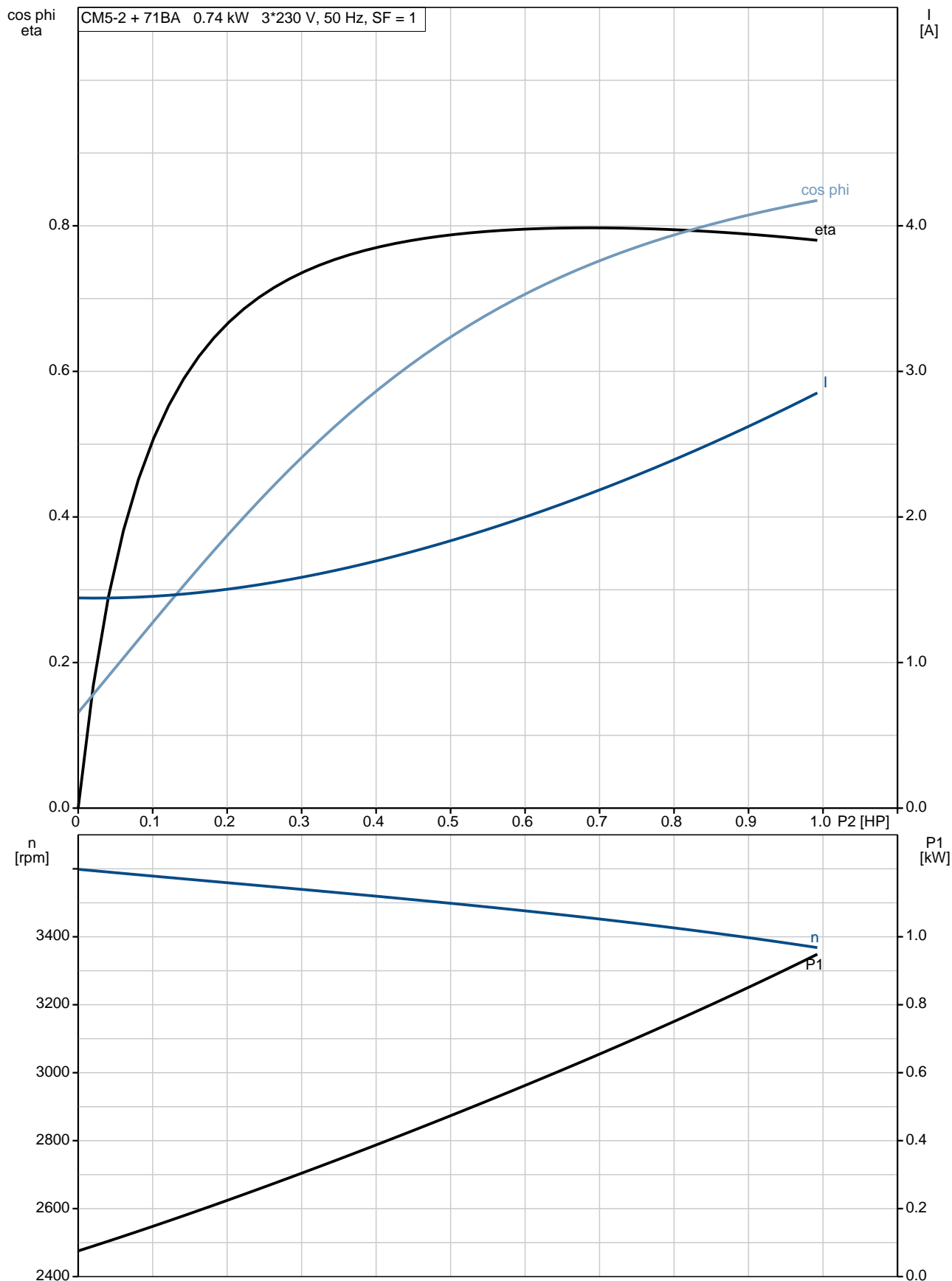
Created by:

Phone:

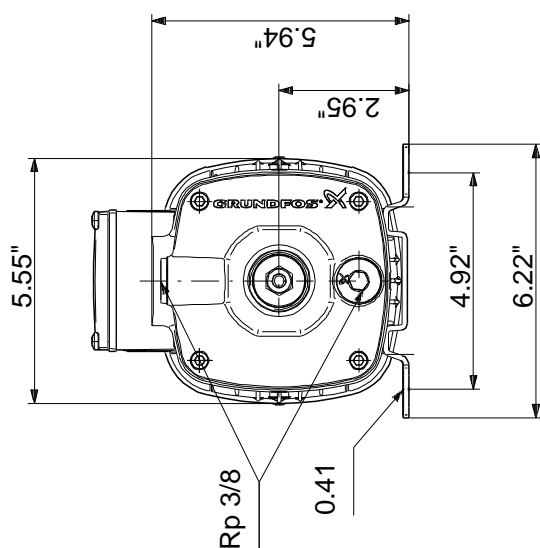
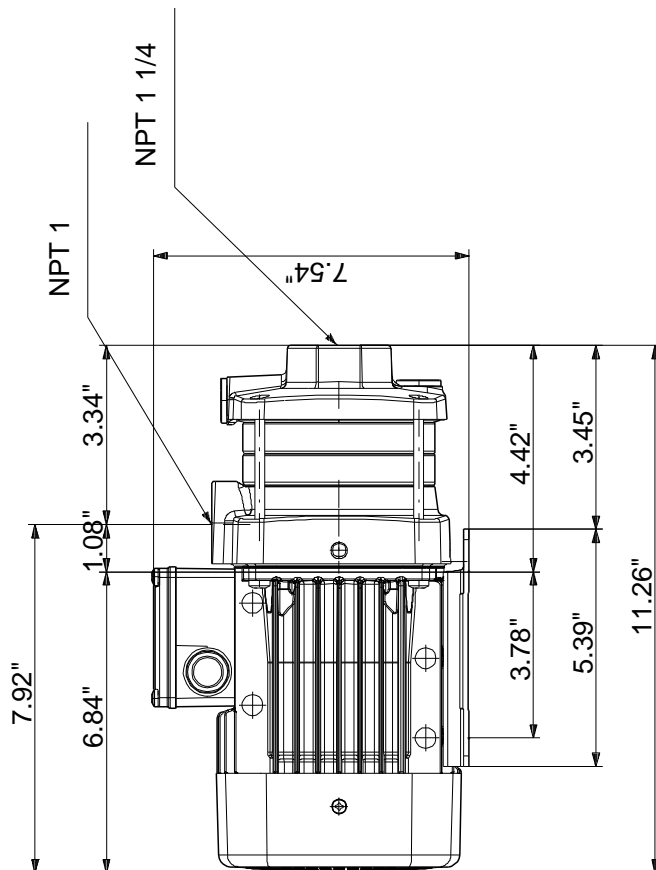
Date: 2/20/2018

Description	Value
Minimum efficiency index, MEI :	0,7
Net weight:	25.5 lb
Gross weight:	31 lb

97568449 CM5-2 60 Hz



97568449 CM5-2 60 Hz



Note! All units are in [mm] unless otherwise stated.
Disclaimer: This simplified dimensional drawing does not show all details.

97568449 CM5-2 60 Hz

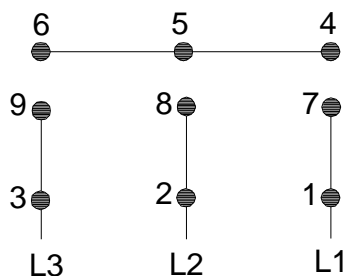


WARNING

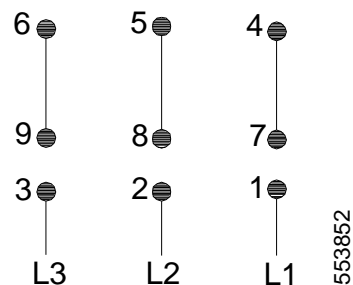
MOTOR MUST BE GROUNDED IN ACCORDANCE WITH THE NATIONAL ELECTRICAL CODE AND LOCAL CODES BY TRAINED PERSONNEL TO PREVENT SERIOUS ELECTRICAL SHOCKS.

TO SERVICE MOTOR, DISCONNECT POWER SOURCE FROM MOTOR AND ANY ACCESSORY DEVICES AND ALLOW MOTOR TO COME TO A COMPLETE STAND STILL.

LOW VOLTAGE 60Hz. 208-230V

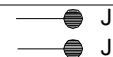


HIGH VOLTAGE 60Hz: 460V 50Hz: 400V



INTERCHANGE ANY TWO LINE
WIRES TO REVERSE ROTATION

THERMOSTAT LEADS
(WHEN PROVIDED)





Company name:

Created by:

Phone:

Date:

2/20/2018

Order Data:

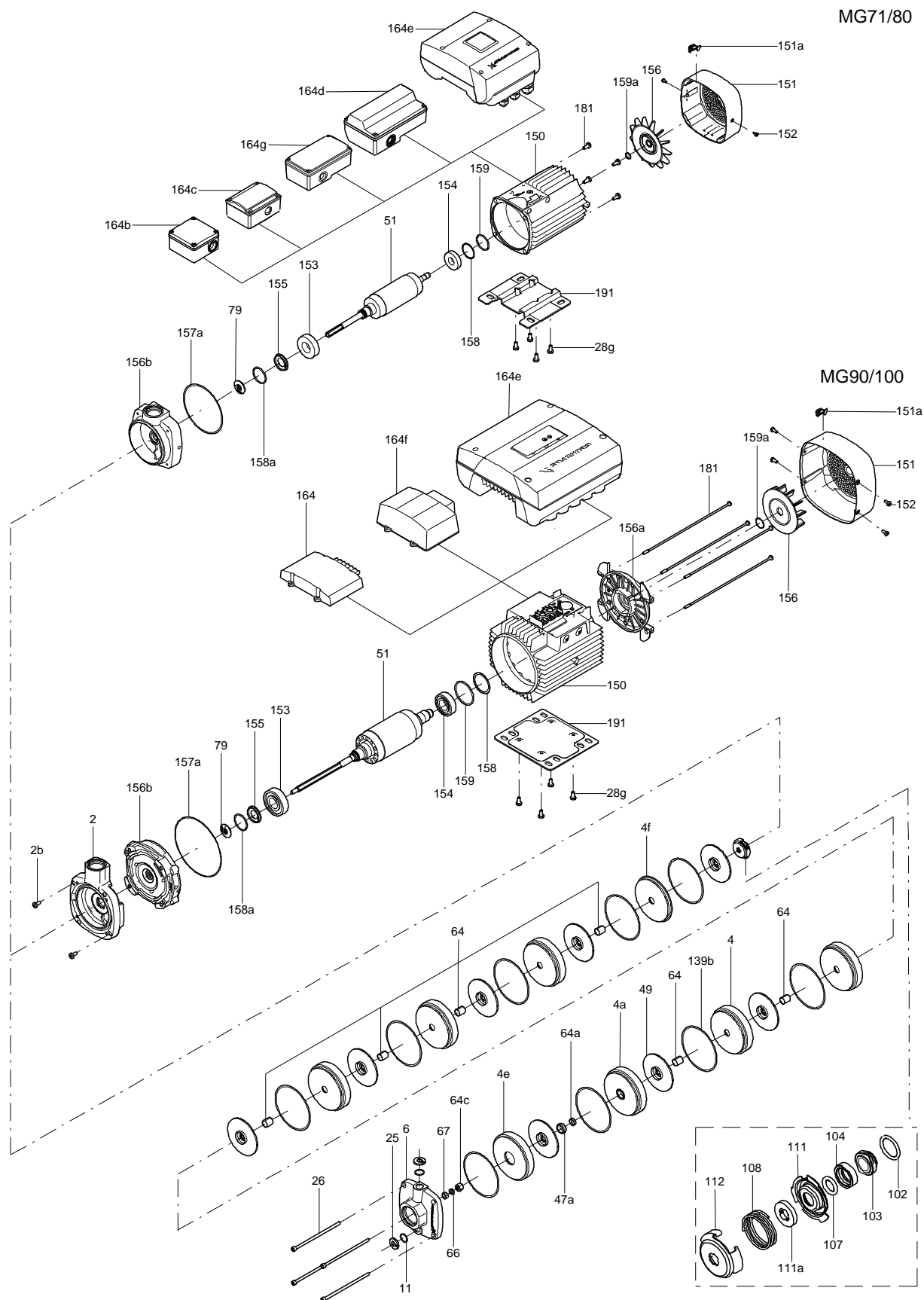
Product name: CM5-2 A-S-A-E-AQQE

Amount: 1

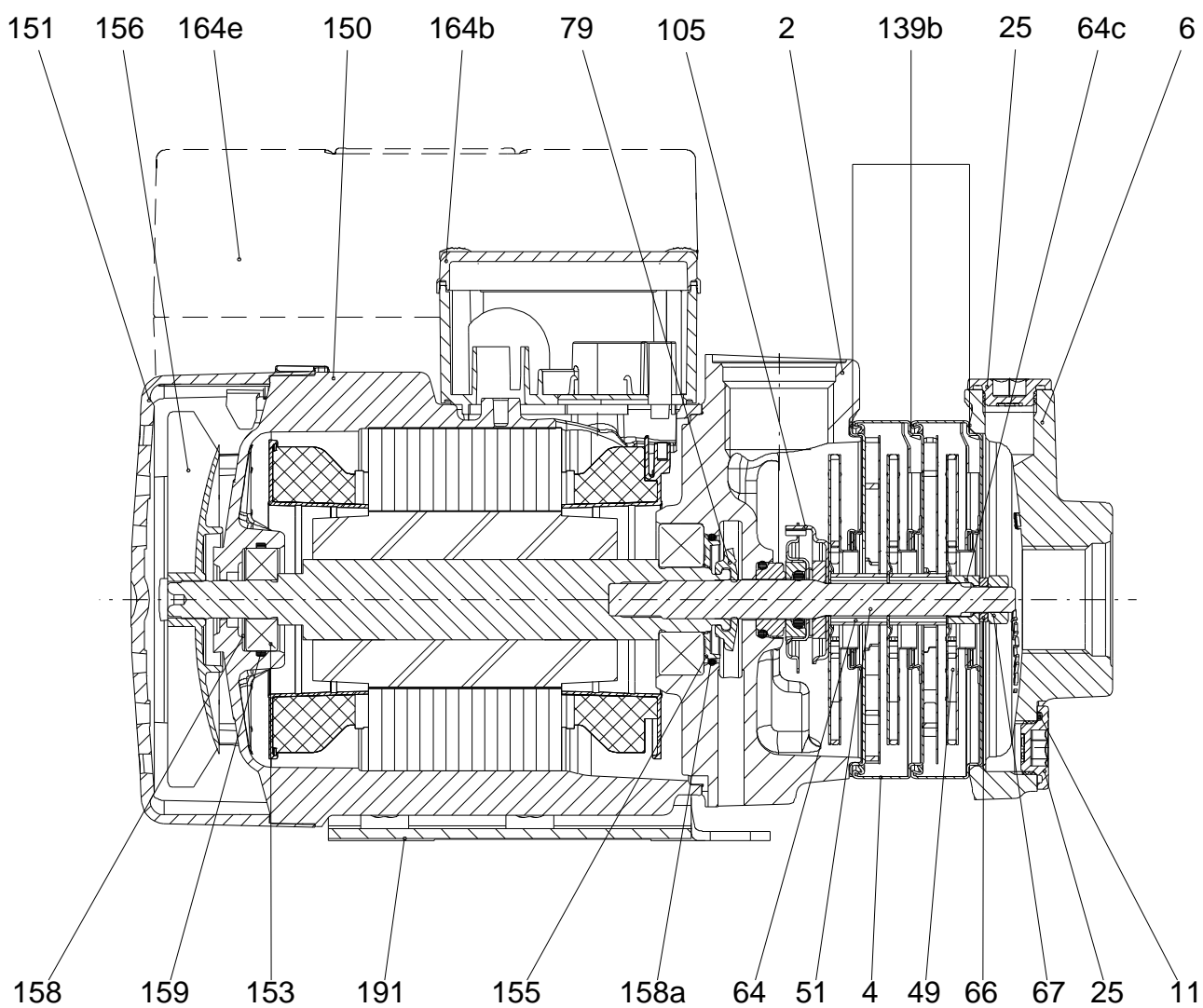
Product No.: 97568449

Total: Price on request

Exploded view (MG 71/80, MG 90/100)



Sectional drawing



165x100

Parts list CM5-2, Prod number 97568449

Valid from 7.12.2011 (1150)

Position	Description	Annotation	Classification data	Part No.	Count	Unit
-	Drain plug cpl.				2	pcs
11	O-ring		Diameter: 18,5		1	
			Material type: EPDM			
			Thickness: 2			
25	Plug				1	
	ML71BA				1	pcs
	ML71BA				1	pcs
- 4.f	Chamber				1	pcs
	Guide vane				6	
	Plate				1	
	Plate				1	
	Retainer				1	
45	Neck ring				1	
65	Retainer				1	
- 5a	Chamber cpl.				1	pcs
	Retainer				1	
	Intermediate chamber				1	
	Vane				1	
45	Neck ring				1	
65	Retainer				1	
6	Inlet part				1	pcs
26	Hex socket head cap screw		Length: 60		4	pcs
			Thread: M06			
28g	Cross recess countersunk screw		Designation: TORX		4	pcs
36	Lock nut		Thread: M8		1	pcs
37	Gasket		Inner diameter: 103,0		3	pcs
			Outer diameter: 110,0			
49	Impeller cpl.				2	pcs
51	Pump shaft		Diameter: D12		1	pcs
64	Spacing pipe				1	pcs
64.c	Clamp				1	pcs
66	Wedge lock washer				1	pcs
76	Nameplate				2	pcs
111.a	Stop ring				1	pcs
151	Fan cover				1	pcs
151.a	Installation indicator				1	pcs
152	Pan head thread forming screw				2	pcs
156	Fan				1	pcs
191	Base plate				1	pcs