

PROJECT: _____	UNIT TAG: _____	QUANTITY: _____
REPRESENTATIVE: _____	TYPE OF SERVICE: _____	DATE: _____
ENGINEER: _____	SUBMITTED BY: _____	DATE: _____
CONTRACTOR: _____	APPROVED BY: _____	DATE: _____
	ORDER NO.: _____	DATE: _____

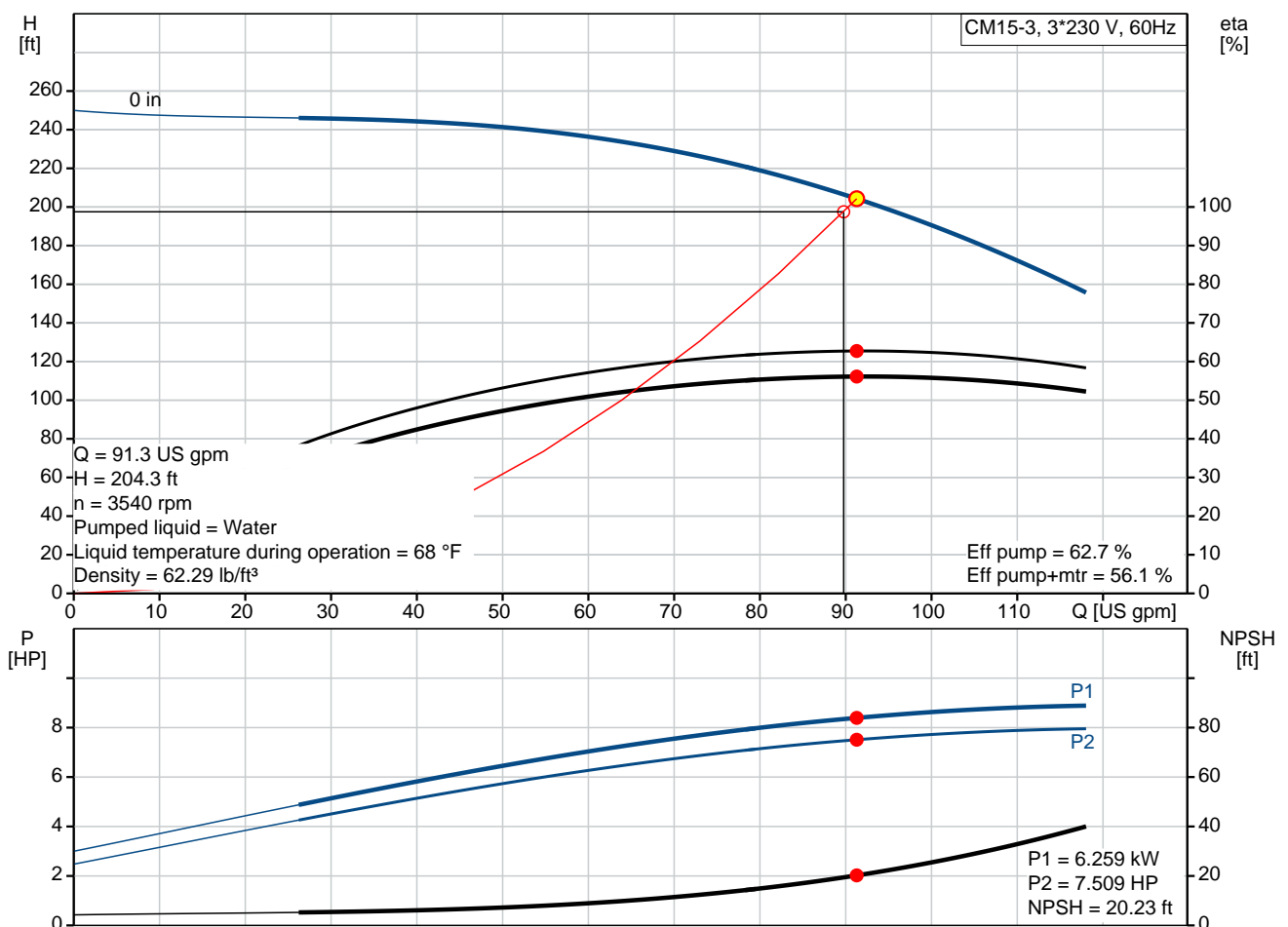
### CM15-3

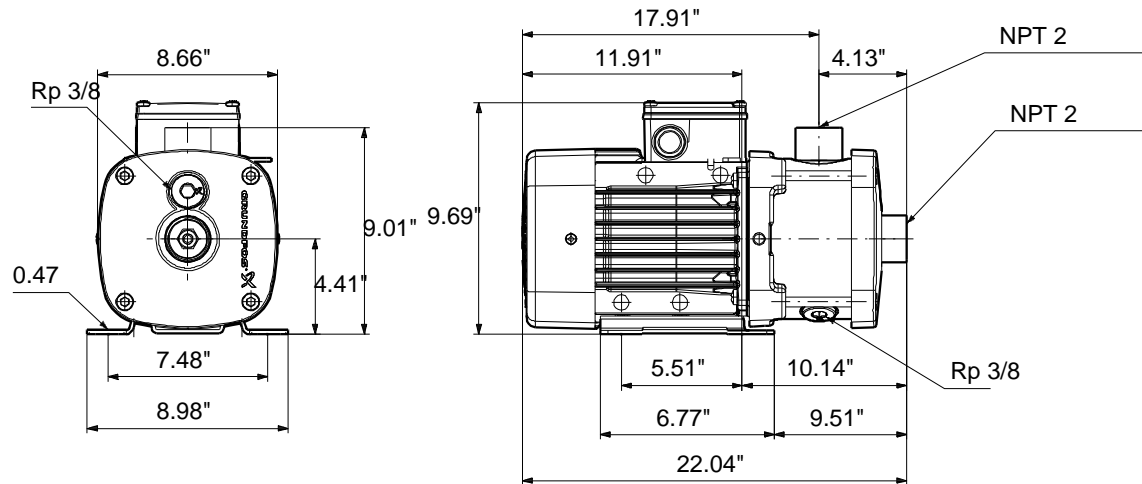


CM are reliable, quiet and compact horizontal end-suction pumps. The modular pump design makes it easy to make customised solutions. The CM pumps are available in cast iron and stainless steel

Product photo could vary from the actual product

Conditions of Service		Pump Data		Motor Data	
Flow:	91.3 US gpm	Maximum operating pressure:	232 psi	Rated power - P2:	8 HP
Head:	204.3 ft	Max pressure at stated temperature:	145 psi / 250 °F	Rated voltage:	208-230YY/440-480Y V
Efficiency:	56.1 %	Liquid temperature range:	-4 .. 248 °F	Main frequency:	60 Hz
Liquid:	Water	Maximum ambient temperature:	131 °F	Enclosure class:	IP55
Temperature:	68 °F	Approvals:	CE,CULUS,WRAS,ACS,TR,EAC	Insulation class:	F
NPSH required:	20.23 ft	Shaft seal:	AQQE	Motor protection:	NO
Viscosity:		Flange standard:	INTERNAL NPT THREAD	Motor type:	132BA
Specific Gravity:	1.000	Product number:	97568551	Motor_efficiency:	88.5 %





**Materials:**

Pump housing: Stainless steel  
DIN W.-Nr. 1.4401  
AISI 316

Impeller: Stainless steel  
DIN W.-Nr. 1.4401  
AISI 316

Material code: G

Rubber: EPDM

Code for rubber: E

## Tender Text

Product No.: [97568551](#)**CM15-3 A-S-G-E-AQQE**

CM is a compact horizontal multistage centrifugal pump, close-coupled with a: 3-phase, 208-230YY/440-480Y V, 60 Hz Hz. Foot mounted motor.

The pump is with axial suction port and radial discharge port including a special designed mechanical shaft seal in the solution AQQE.

Shaft, impellers, chambers and filling plugs are made of stainless steel.

Suction and discharge are made of Stainless steel.

The CM can also operate as a CME by connecting the motor to a CUE. Please find more information in the CUE part of Win/WebCAPS.

**Liquid:**

Pumped liquid: Water  
Liquid temperature range: -4 .. 248 °F  
Liquid temperature during operation: 68 °F  
Density: 62.29 lb/ft³

**Technical:**

Speed for pump data: 3480 rpm  
Actual calculated flow: 91.3 US gpm  
Resulting head of the pump: 204.3 ft  
Primary shaft seal: AQQE  
Approvals on nameplate: CE,CULUS,WRAS,ACS,TR,EAC  
Curve tolerance: ISO9906:2012 3B

**Materials:**

Pump housing: Stainless steel  
DIN W.-Nr. 1.4401  
AISI 316  
Impeller: Stainless steel  
DIN W.-Nr. 1.4401  
AISI 316  
Rubber: EPDM

**Installation:**

Maximum ambient temperature: 131 °F  
Maximum operating pressure: 232 psi  
Max pressure at stated temperature: 145 psi / 250 °F  
232 psi / 194 °F  
Flange standard: INTERNAL NPT THREAD  
Pump inlet: NPT 2  
Pump outlet: NPT 2

**Electrical data:**

Motor type: 132BA  
IE Efficiency class: NEMA Energy / IE2 60Hz / NRC



**Company name:**

**Created by:**

**Phone:**


**Date:**

2/20/2018

Rated power - P2: 8 HP  
Main frequency: 60 Hz  
Rated voltage: 3 x 208-230YY/440-480Y V  
Service factor: 1  
Rated current: 21-20,4/10,5-10,2 A  
Starting current: 900-1150 %  
Rated speed: 3520-3540 rpm  
Motor efficiency at full load: 88.5 %  
Enclosure class (IEC 34-5): IP55  
Insulation class (IEC 85): F

**Others:**

Minimum efficiency index, MEI : 0,59  
Net weight: 104 lb  
Gross weight: 109 lb

Position	Count	Description
	1	<p><b>CM15-3 A-S-G-E-AQQE</b></p>  <p>Product No.: <a href="#">97568551</a></p> <p>CM is a compact horizontal multistage centrifugal pump, close-coupled with a: 3-phase, 208-230YY/440-480Y V, 60 Hz Hz. Foot mounted motor. The pump is with axial suction port and radial discharge port including a special designed mechanical shaft seal in the solution AQQE. Shaft, impellers, chambers and filling plugs are made of stainless steel. Suction and discharge are made of Stainless steel.</p> <p>The CM can also operate as a CME by connecting the motor to a CUE. Please find more information in the CUE part of Win/WebCAPS.</p> <p><b>Liquid:</b>  Pumped liquid: Water  Liquid temperature range: -4 .. 248 °F  Liquid temperature during operation: 68 °F  Density: 62.29 lb/ft³</p> <p><b>Technical:</b>  Speed for pump data: 3480 rpm  Actual calculated flow: 91.3 US gpm  Resulting head of the pump: 204.3 ft  Primary shaft seal: AQQE  Approvals on nameplate: CE,CULUS,WRAS,ACS,TR,EAC  Curve tolerance: ISO9906:2012 3B</p> <p><b>Materials:</b>  Pump housing: Stainless steel  DIN W.-Nr. 1.4401  AISI 316  Impeller: Stainless steel  DIN W.-Nr. 1.4401  AISI 316  Rubber: EPDM</p> <p><b>Installation:</b>  Maximum ambient temperature: 131 °F  Maximum operating pressure: 232 psi  Max pressure at stated temperature: 145 psi / 250 °F  232 psi / 194 °F  Flange standard: INTERNAL NPT THREAD  Pump inlet: NPT 2  Pump outlet: NPT 2</p> <p><b>Electrical data:</b>  Motor type: 132BA  IE Efficiency class: NEMA Energy / IE2 60Hz / NRC  Rated power - P2: 8 HP</p>



Company name:

Created by:

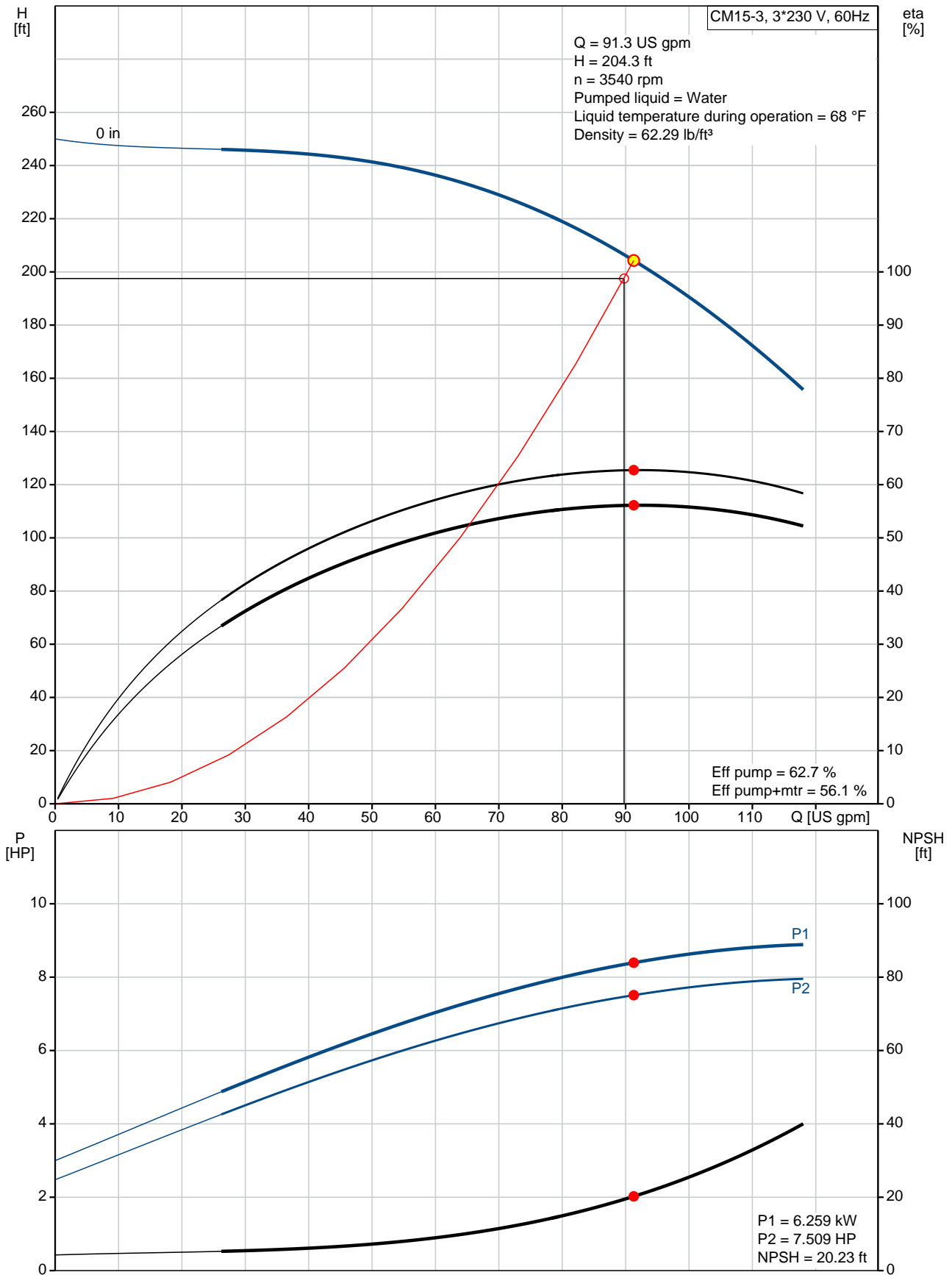
Phone:

Date:

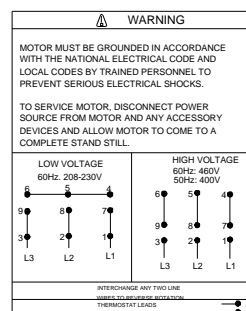
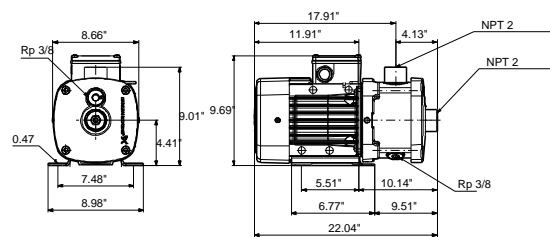
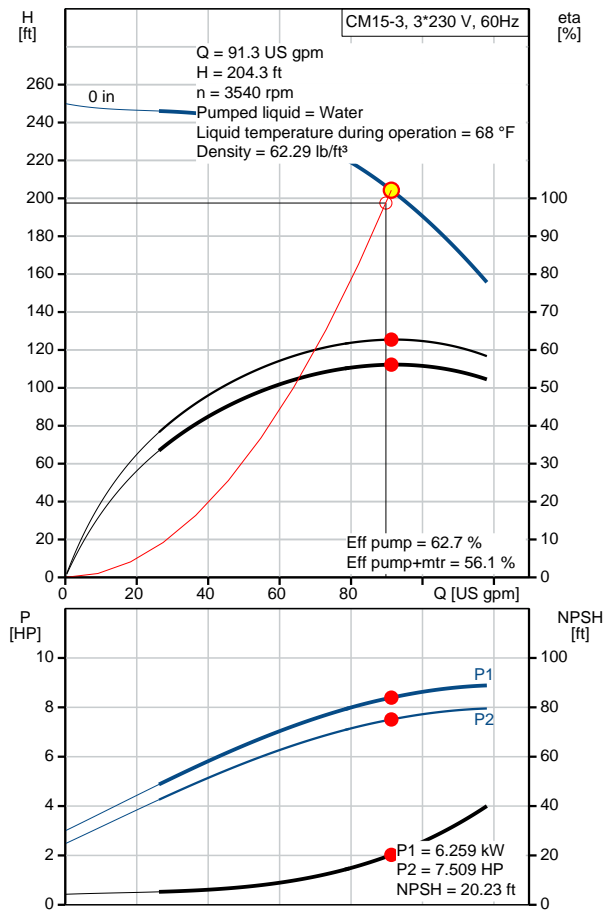
2/20/2018

Position	Count	Description
		<p>Main frequency: 60 Hz Rated voltage: 3 x 208-230YY/440-480Y V Service factor: 1 Rated current: 21-20,4/10,5-10,2 A Starting current: 900-1150 % Rated speed: 3520-3540 rpm Motor efficiency at full load: 88.5 % Enclosure class (IEC 34-5): IP55 Insulation class (IEC 85): F</p> <p><b>Others:</b> Minimum efficiency index, MEI : 0,59 Net weight: 104 lb Gross weight: 109 lb</p>

## 97568551 CM15-3 60 Hz



Description	Value
<b>General information:</b>	
Product name:	CM15-3 A-S-G-E-AQQE
Product No.:	97568551
EAN:	5700318671125
<b>Technical:</b>	
Speed for pump data:	3480 rpm
Actual calculated flow:	91.3 US gpm
Resulting head of the pump:	204.3 ft
Impellers:	3
Primary shaft seal:	AQQE
Approvals on nameplate:	CE,CULUS,WRAS,ACS,TR, EAC
Curve tolerance:	ISO9906:2012 3B
Pump version:	A
Model:	A
<b>Materials:</b>	
Pump housing:	Stainless steel
	DIN W.-Nr. 1.4401
	AISI 316
Impeller:	Stainless steel
	DIN W.-Nr. 1.4401
	AISI 316
Material code:	G
Rubber:	EPDM
Code for rubber:	E
<b>Installation:</b>	
Maximum ambient temperature:	131 °F
Maximum operating pressure:	232 psi
Max pressure at stated temperature:	145 psi / 250 °F
	232 psi / 194 °F
Flange standard:	INTERNAL NPT THREAD
Connect code:	S
Pump inlet:	NPT 2
Pump outlet:	NPT 2
<b>Liquid:</b>	
Pumped liquid:	Water
Liquid temperature range:	-4 .. 248 °F
Liquid temperature during operation:	68 °F
Density:	62.29 lb/ft³
<b>Electrical data:</b>	
Motor type:	132BA
IE Efficiency class:	NEMA Energy / IE2 60Hz / NRC
Rated power - P2:	8 HP
Main frequency:	60 Hz
Rated voltage:	3 x 208-230YY/440-480Y V
Service factor:	1
Rated current:	21-20,4/10,5-10,2 A
Starting current:	900-1150 %
Rated speed:	3520-3540 rpm
Motor efficiency at full load:	88.5 %
Enclosure class (IEC 34-5):	IP55
Insulation class (IEC 85):	F
Motor protection:	NO





Company name:

Created by:

Phone:

Date: 2/20/2018

Description	Value
-------------	-------

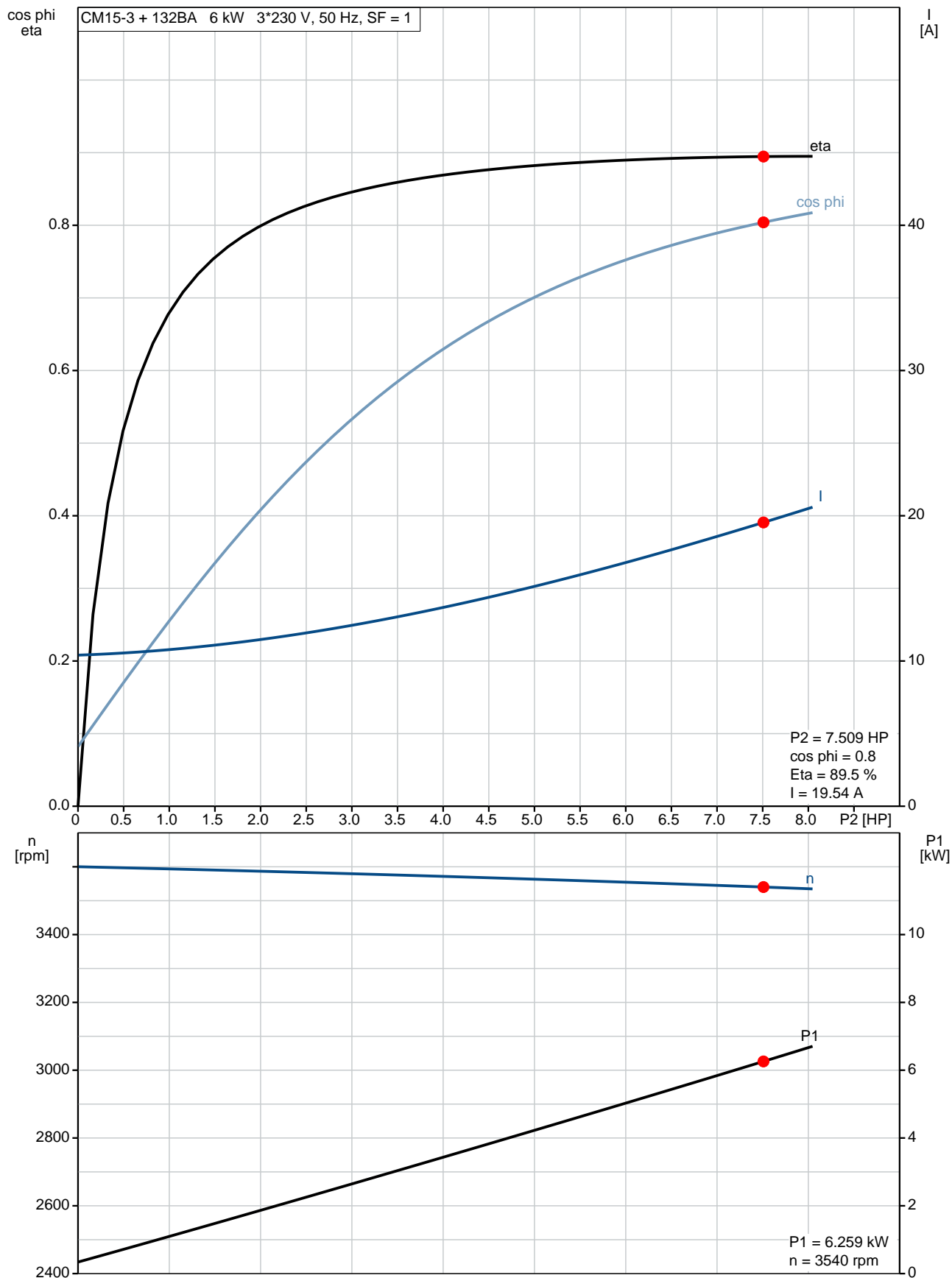
**Others:**

Minimum efficiency index, MEI : 0,59

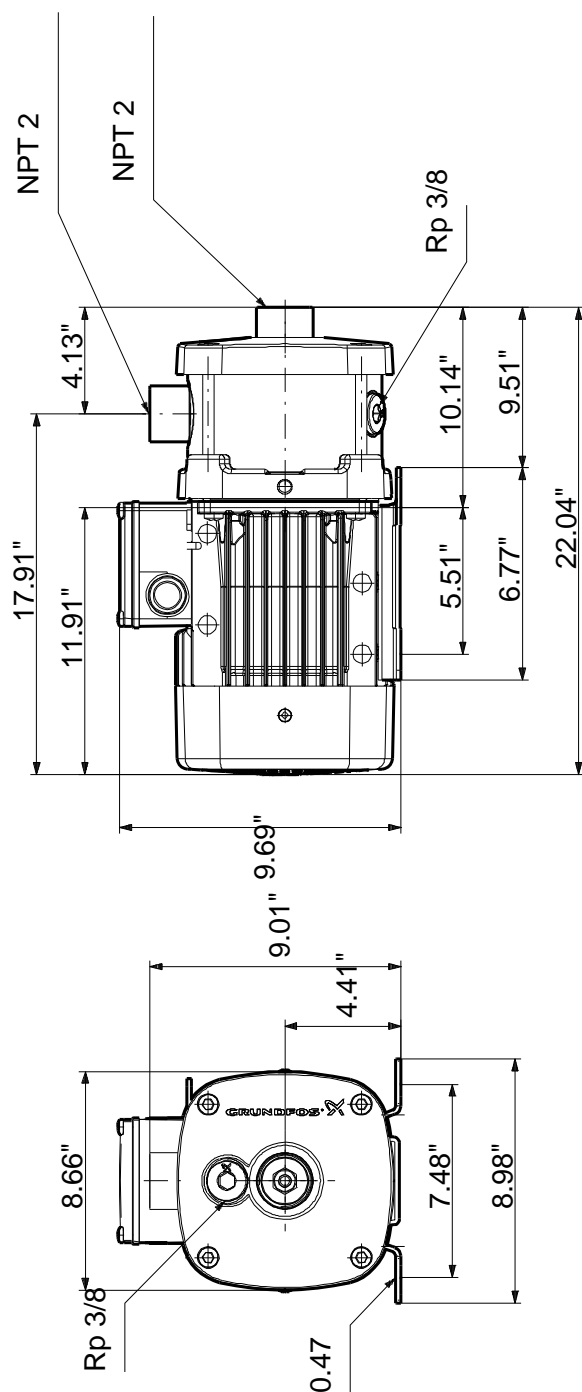
Net weight: 104 lb

Gross weight: 109 lb

## 97568551 CM15-3 60 Hz



## 97568551 CM15-3 60 Hz



Note! All units are in [mm] unless otherwise stated.  
Disclaimer: This simplified dimensional drawing does not show all details.

## 97568551 CM15-3 60 Hz

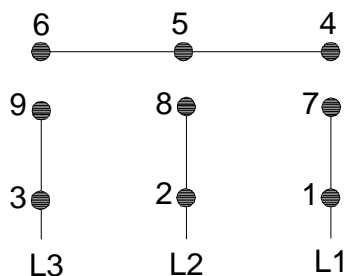


### WARNING

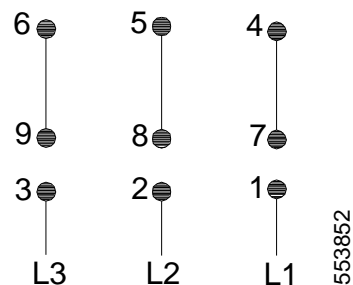
MOTOR MUST BE GROUNDED IN ACCORDANCE WITH THE NATIONAL ELECTRICAL CODE AND LOCAL CODES BY TRAINED PERSONNEL TO PREVENT SERIOUS ELECTRICAL SHOCKS.

TO SERVICE MOTOR, DISCONNECT POWER SOURCE FROM MOTOR AND ANY ACCESSORY DEVICES AND ALLOW MOTOR TO COME TO A COMPLETE STAND STILL.

#### LOW VOLTAGE 60Hz. 208-230V

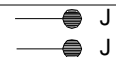


#### HIGH VOLTAGE 60Hz: 460V 50Hz: 400V



INTERCHANGE ANY TWO LINE  
WIRES TO REVERSE ROTATION

THERMOSTAT LEADS  
(WHEN PROVIDED)





Company name:

Created by:

Phone:

Date:

2/20/2018

---

**Order Data:**

Product name: CM15-3 A-S-G-E-AQQE

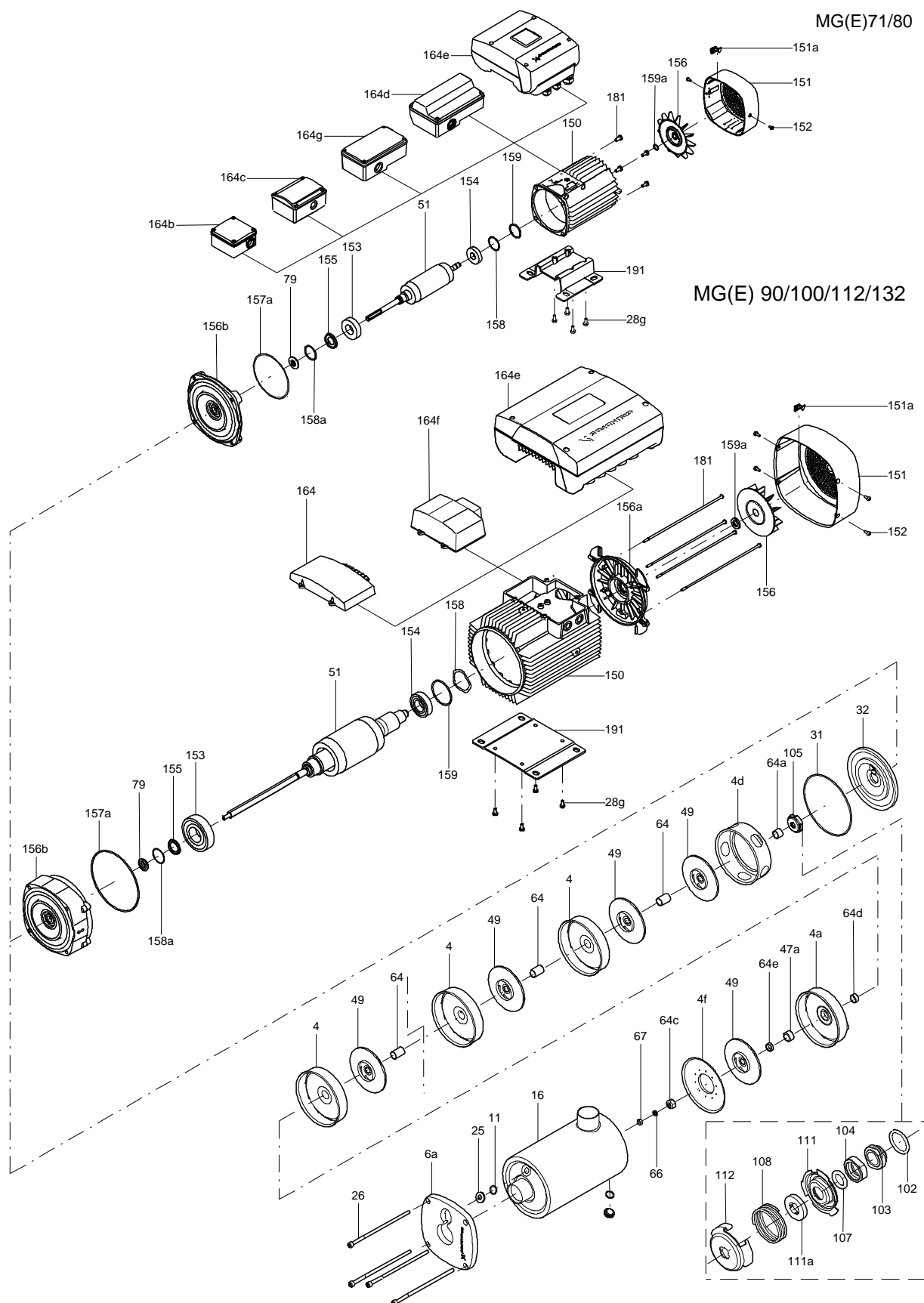
Amount: 1

Product No.: 97568551

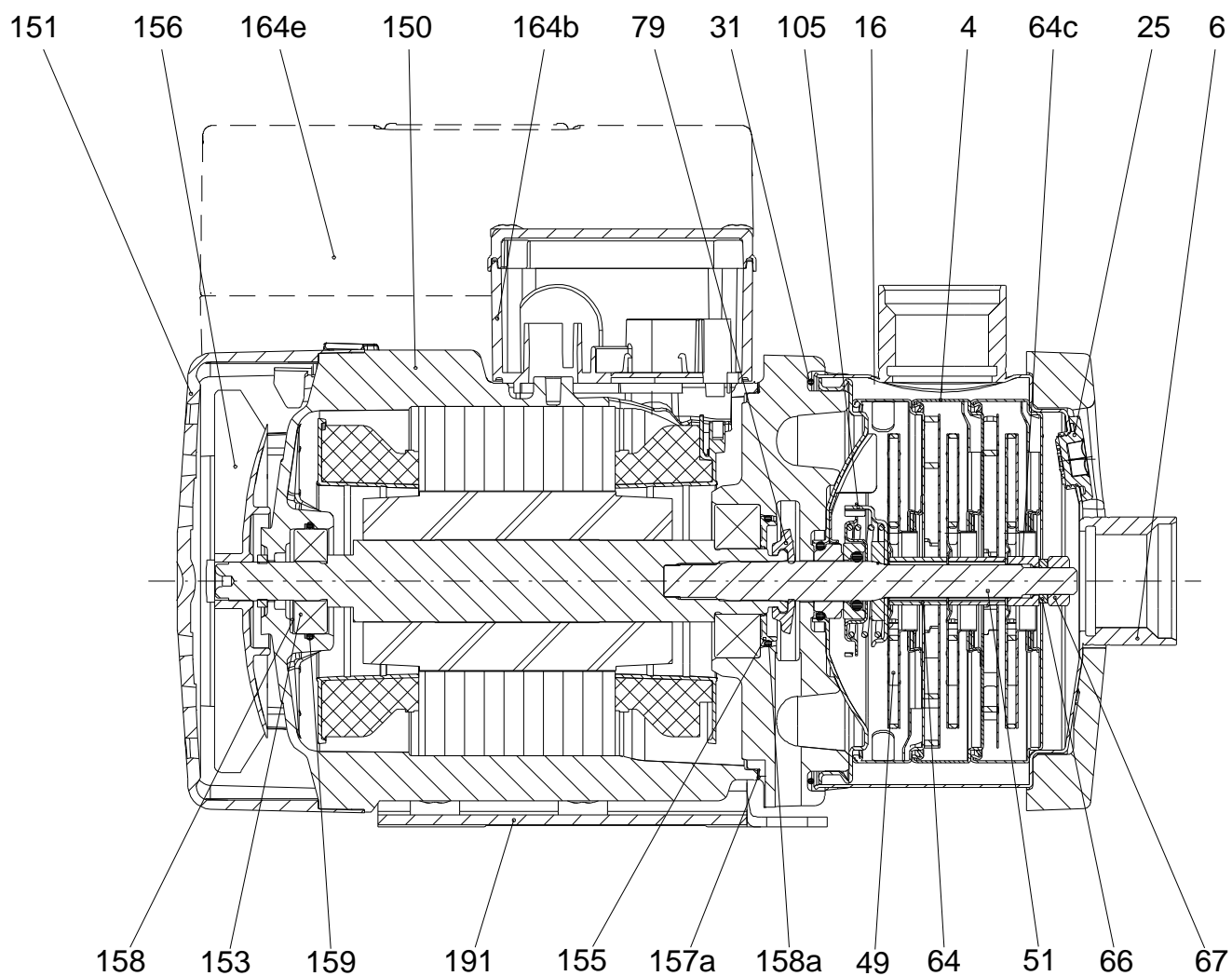
Total: Price on request

---

## Exploded view ( MG(E) 71/80, MG(E) 90/100/112/132)



## Sectional drawing



165x100

## Parts list CM15-3, Prod number 97568551

Valid from 7.12.2011 (1150)

Position	Description	Annotation	Classification data	Part No.	Count	Unit
-	Drain plug cpl.				2	pcs
11	O-ring		Diameter: 18,5		1	
			Material type: EPDM			
			Thickness: 2			
25	Plug				1	
	ML132BA				1	pcs
- 4	Chamber cpl.				2	pcs
	Chamber w/o guide vanes				1	
	Seal ring				1	
	Cover plate				1	
	Guide vane				10	
	Sand Lifter				1	
45	Seal ring				1	
65	Neck ring retainer				1	
4.d	Chamber				1	pcs
- 4f	Chamber				1	pcs
	Seal ring				1	
	Inlet part				1	
45	Seal ring				1	
65	Neck ring retainer				1	
6.a	Flange				1	pcs
16	Collar sleeve cpl.				1	pcs
26	Hex socket head cap screw		Length: 140		4	pcs
			Thread: M08			
31	O-ring		Diameter: 153		1	pcs
			Material type: EPDM			
			Thickness: 4,7			
- 32	Cover plate				1	pcs
	Cover plate				1	
	Plate				1	
36	Lock nut		Thread: M8		1	pcs
49	Impeller cpl.				3	pcs
51	Pump shaft		Diameter: D16		1	pcs
64	Spacing pipe				2	pcs
64.a	Spacing pipe				1	pcs
64.c	Clamp				1	pcs
66	Wedge lock washer				1	pcs
76	Nameplate				2	pcs
- 105	Shaft seal				1	pcs
102	O-ring		Diameter: 22,00		1	
			Material type: EPDM			
			Thickness: 2,75			
103	Seal ring, stationary				1	
104	Seal ring, rotating				1	
107	O-ring		Diameter: 15.5		1	
			Material type: EPDM			
			Thickness: 3.18			
108	Compression spring				1	
111	Retainer				1	
112	Driver for shaft seal				1	
111.a	Stop ring				1	pcs
151	Fan cover				1	pcs
151.a	Installation indicator				1	pcs



Company name:

Created by:

Phone:

Date: 2/20/2018

Position	Description	Annotation	Classification data	Part No.	Count	Unit
152	Pan head thread forming screw				4	pcs
156	Fan				1	pcs
191	Base plate				1	pcs
192	Thread forming screw				4	pcs