


| Count | Description | | | | | | | | | | | | | | | | | | | | | | |
|--------------------------------------|---|-----------|------------------------------|------------|-------------------|-----------|----------|------------------|--------|-------------------------|---------------------|-------------|----------|-----------------------------|---------|--------------------------------------|----------|--------------------------------------|----------|----------------------------|-----|--------------|--------------------------------|
| 1 | <p>DDE 6-10</p>  <p>Product photo could vary from the actual product</p> <p>Product No.: 97721109 DDE 6-10 P-PV/V/C-X-31U7U7BG</p> <p>The SMART Digital DDE is a compact positive displacement, diaphragm dosing pump with variable-speed drive (stepper motor) and intelligent control electronics with minimum energy consumption. The SMART Digital Dosing series operates at full stroke length to ensure optimum accuracy, priming and suction, even for degassing liquids. The duration of each discharge stroke varies according to the capacity set, resulting in optimum smooth and continuous discharge flow.</p> <p>The click-stop mounting plate allows installation in three different positions without using any additional accessories. The dosing flow can be adjusted by means of an adjustment knob on a logarithmical scale from 0.1-100%.</p> <p>The dosing head is composed of:</p> <ul style="list-style-type: none"> - Long lifetime and universal chemical resistant Full-PTFE diaphragm. - Double ball valves for highest dosing accuracy. - Deaeration valve for easy start-up. <p>Operation modes:</p> <ul style="list-style-type: none"> - Manual dosing from 0.1 to 100%. - Pulse control (divisor function included). <p>Other features:</p> <ul style="list-style-type: none"> - 100 % key (max. capacity), e.g. for deaeration. - Operation mode switch key between manual and pulse. - Status LEDs for pulse and manual. - Mechanical lock to protect the pump against unauthorised access. <p>Signal- Inputs/outputs:</p> <ul style="list-style-type: none"> - Input for pulse, external stop. - Input for empty tank signal. <p>Technical:</p> <table> <tr> <td>Type key:</td><td>DDE 6-10 P-PV/V/C-X-31U7U7BG</td></tr> <tr> <td>Max. Flow:</td><td>1.585 US gal/hour</td></tr> <tr> <td>Min flow:</td><td>6.0 ml/h</td></tr> <tr> <td>Turn-down ratio:</td><td>1:1000</td></tr> <tr> <td>Approvals on nameplate:</td><td>CE,CSA-US,NSF61,RCM</td></tr> <tr> <td>Valve type:</td><td>Standard</td></tr> <tr> <td>Maximum viscosity at 100 %:</td><td>50 mPas</td></tr> <tr> <td>Maximum viscosity in slow mode 50 %:</td><td>N/A mPas</td></tr> <tr> <td>Maximum viscosity in slow mode 25 %:</td><td>N/A mPas</td></tr> <tr> <td>Accuracy of repeatability:</td><td>5 %</td></tr> </table> <p>Materials:</p> <table> <tr> <td>Dosing head:</td><td>PVDF (Polyvinylidene fluoride)</td></tr> </table> | Type key: | DDE 6-10 P-PV/V/C-X-31U7U7BG | Max. Flow: | 1.585 US gal/hour | Min flow: | 6.0 ml/h | Turn-down ratio: | 1:1000 | Approvals on nameplate: | CE,CSA-US,NSF61,RCM | Valve type: | Standard | Maximum viscosity at 100 %: | 50 mPas | Maximum viscosity in slow mode 50 %: | N/A mPas | Maximum viscosity in slow mode 25 %: | N/A mPas | Accuracy of repeatability: | 5 % | Dosing head: | PVDF (Polyvinylidene fluoride) |
| Type key: | DDE 6-10 P-PV/V/C-X-31U7U7BG | | | | | | | | | | | | | | | | | | | | | | |
| Max. Flow: | 1.585 US gal/hour | | | | | | | | | | | | | | | | | | | | | | |
| Min flow: | 6.0 ml/h | | | | | | | | | | | | | | | | | | | | | | |
| Turn-down ratio: | 1:1000 | | | | | | | | | | | | | | | | | | | | | | |
| Approvals on nameplate: | CE,CSA-US,NSF61,RCM | | | | | | | | | | | | | | | | | | | | | | |
| Valve type: | Standard | | | | | | | | | | | | | | | | | | | | | | |
| Maximum viscosity at 100 %: | 50 mPas | | | | | | | | | | | | | | | | | | | | | | |
| Maximum viscosity in slow mode 50 %: | N/A mPas | | | | | | | | | | | | | | | | | | | | | | |
| Maximum viscosity in slow mode 25 %: | N/A mPas | | | | | | | | | | | | | | | | | | | | | | |
| Accuracy of repeatability: | 5 % | | | | | | | | | | | | | | | | | | | | | | |
| Dosing head: | PVDF (Polyvinylidene fluoride) | | | | | | | | | | | | | | | | | | | | | | |

| Count | Description |
|-------|---|
| | Valve ball: Ceramic Gasket: FKM Installation: Range of ambient temperature: 32 .. 113 °F Maximum operating pressure: 145.04 psi Installation set: NO Installation type: No installation set Pump inlet: 0.17x 1/4, 1/4x3/8, 3/8x1/2" Pump outlet: 0.17x 1/4, 1/4x3/8, 3/8x1/2" Max. Suction lift during operation: 19.7 ft Max. Suction lift during priming: 6.56 ft Liquid: Pumped liquid: Water Liquid temperature range: 14 .. 113 °F Selected liquid temperature: 68 °F Density: 62.29 lb/ft³ Electrical data: Maximum power input - P1: 19 W Main frequency: 60 Hz Rated voltage: 1 x 100-240 V Enclosure class (IEC 34-5): IP65 / NEMA 4X Length of cable: 4.92 ft Type of cable plug: USA, Canada Inrush current: 25A at 230V for 2ms Controls: Control variant: P Level control: YES Pulse control: YES Ext. Stop input: YES Output relays: YES Others: Net weight: 4.41 lb Gross weight: 6.62 lb Custom tariff no.: 8413.50.0050 |



Company name:

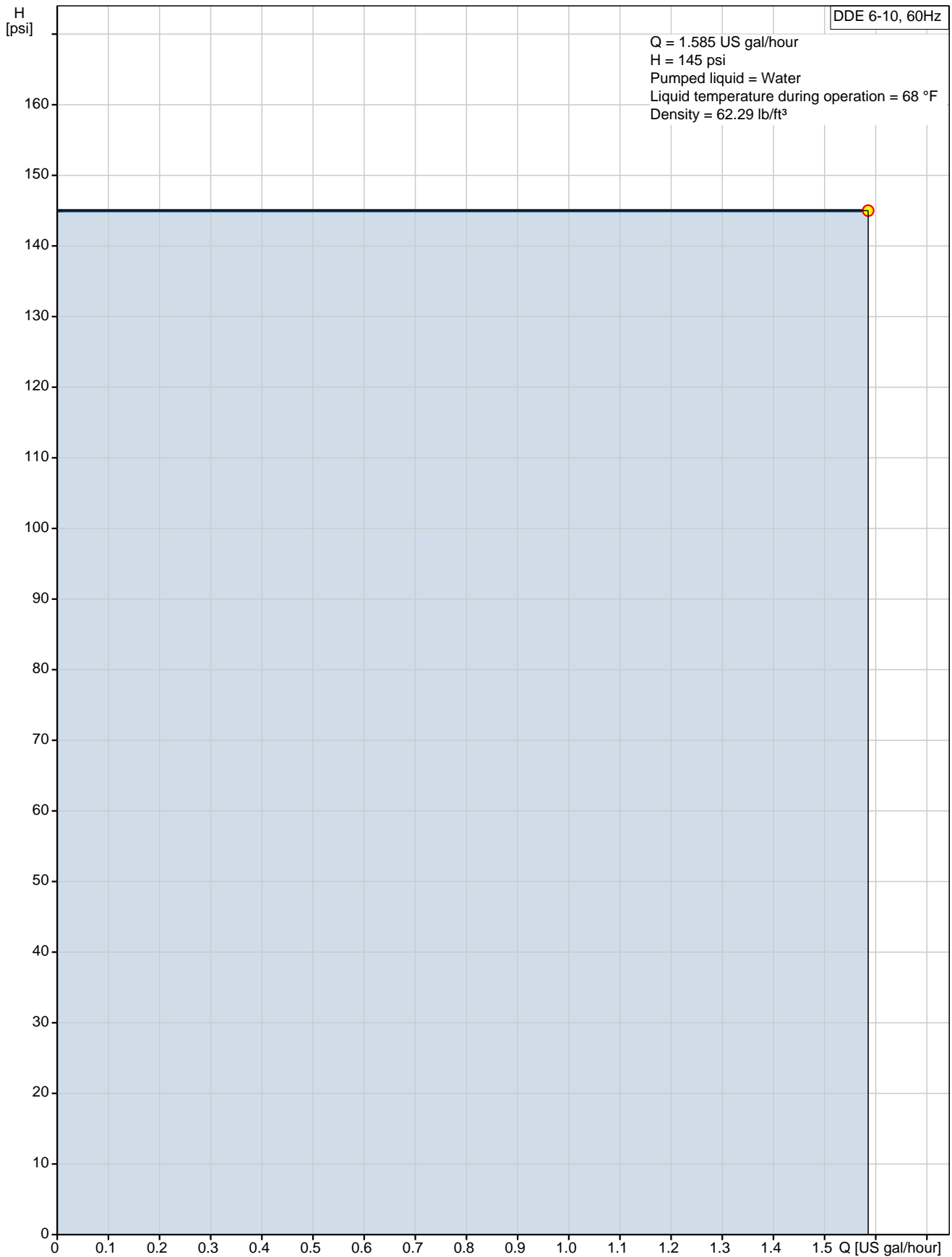
Created by:

Phone:

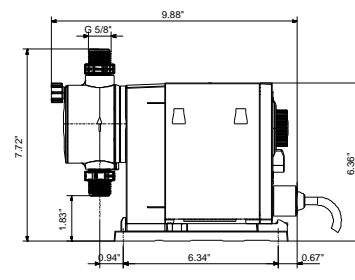
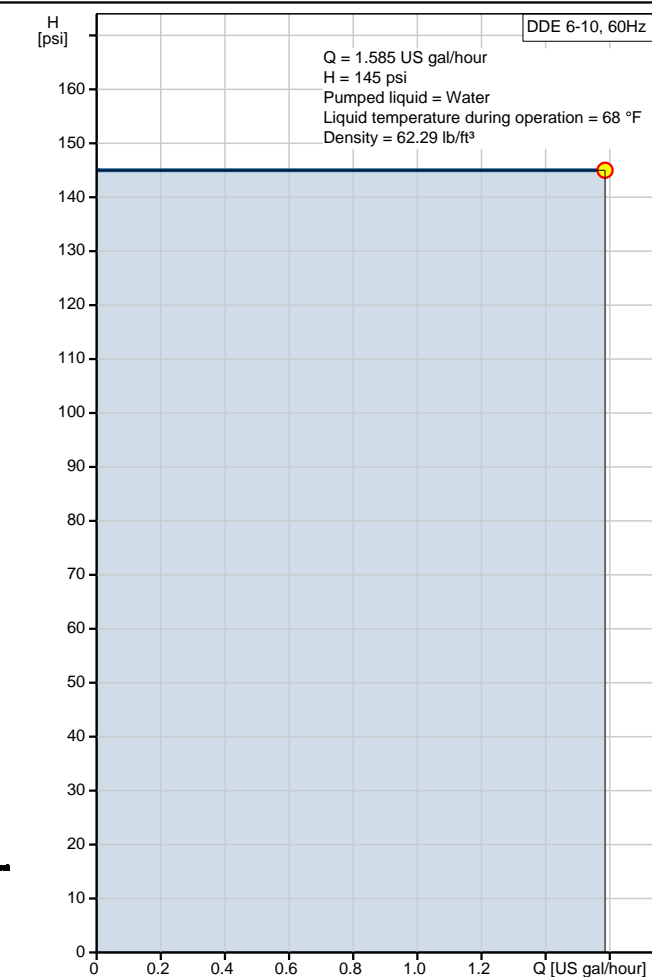
Date:

4/11/2019

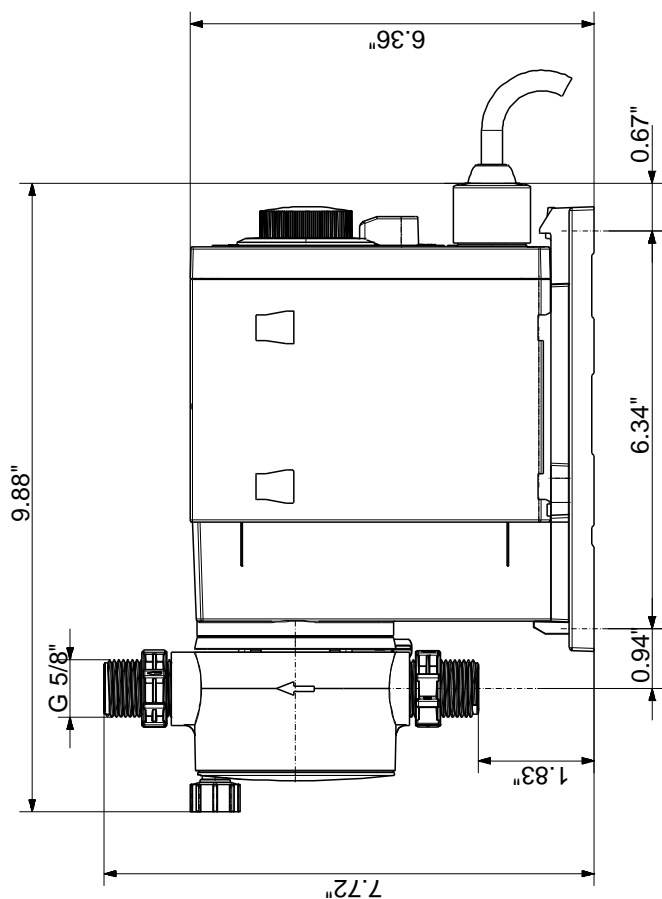
97721109 DDE 6-10 60 Hz



| Description | Value |
|--------------------------------------|---------------------------------|
| General information: | |
| Product name: | DDE 6-10 |
| Product No.: | 97721109 |
| EAN: | 5710622712490 |
| Technical: | |
| Type key: | DDE 6-10 P-PV/V/C-X-31U7U7BG |
| Max. Flow: | 1.585 US gal/hour |
| Min flow: | 6.0 ml/h |
| Turn-down ratio: | 1:1000 |
| Approvals on nameplate: | CE, CSA-US, NSF61, RCM |
| Valve type: | Standard |
| Maximum viscosity at 100 %: | 50 mPas |
| Maximum viscosity in slow mode 50 %: | N/A mPas |
| Maximum viscosity in slow mode 25 %: | N/A mPas |
| Accuracy of repeatability: | 5 % |
| Materials: | |
| Dosing head: | PVDF (Polyvinylidene fluoride) |
| Valve ball: | Ceramic |
| Gasket: | FKM |
| Installation: | |
| Range of ambient temperature: | 32 .. 113 °F |
| Maximum operating pressure: | 145.04 psi |
| Installation set: | NO |
| Installation type: | No installation set |
| Pump inlet: | 0.17x 1/4, 1/4x3/8, 3/8x1/2" |
| Pump outlet: | 0.17x 1/4, 1/4x3/8, 3/8x1/2" |
| Max. Suction lift during operation: | 19.7 ft |
| Max. Suction lift during priming: | 6.56 ft |
| Liquid: | |
| Pumped liquid: | Water |
| Liquid temperature range: | 14 .. 113 °F |
| Selected liquid temperature: | 68 °F |
| Density: | 62.29 lb/ft³ |
| Electrical data: | |
| Maximum power input - P1: | 19 W |
| Main frequency: | 60 Hz |
| Rated voltage: | 1 x 100-240 V |
| Enclosure class (IEC 34-5): | IP65 / NEMA 4X |
| Length of cable: | 4.92 ft |
| Type of cable plug: | USA, Canada |
| Inrush current: | 25A at 230V for 2ms |
| Controls: | |
| Control variant: | P |
| Level control: | YES |
| Pulse control: | YES |
| Ext. Stop input: | YES |
| Output relays: | YES |
| Others: | |
| Net weight: | 4.41 lb |
| Gross weight: | 6.62 lb |
| Custom tariff no.: | 8413.50.0050 |



97721109 DDE 6-10 60 Hz



Note! All units are in [in] unless otherwise stated.
Disclaimer: This simplified dimensional drawing does not show all details.



Company name:

Created by:

Phone:

Date:

4/11/2019

Order Data:

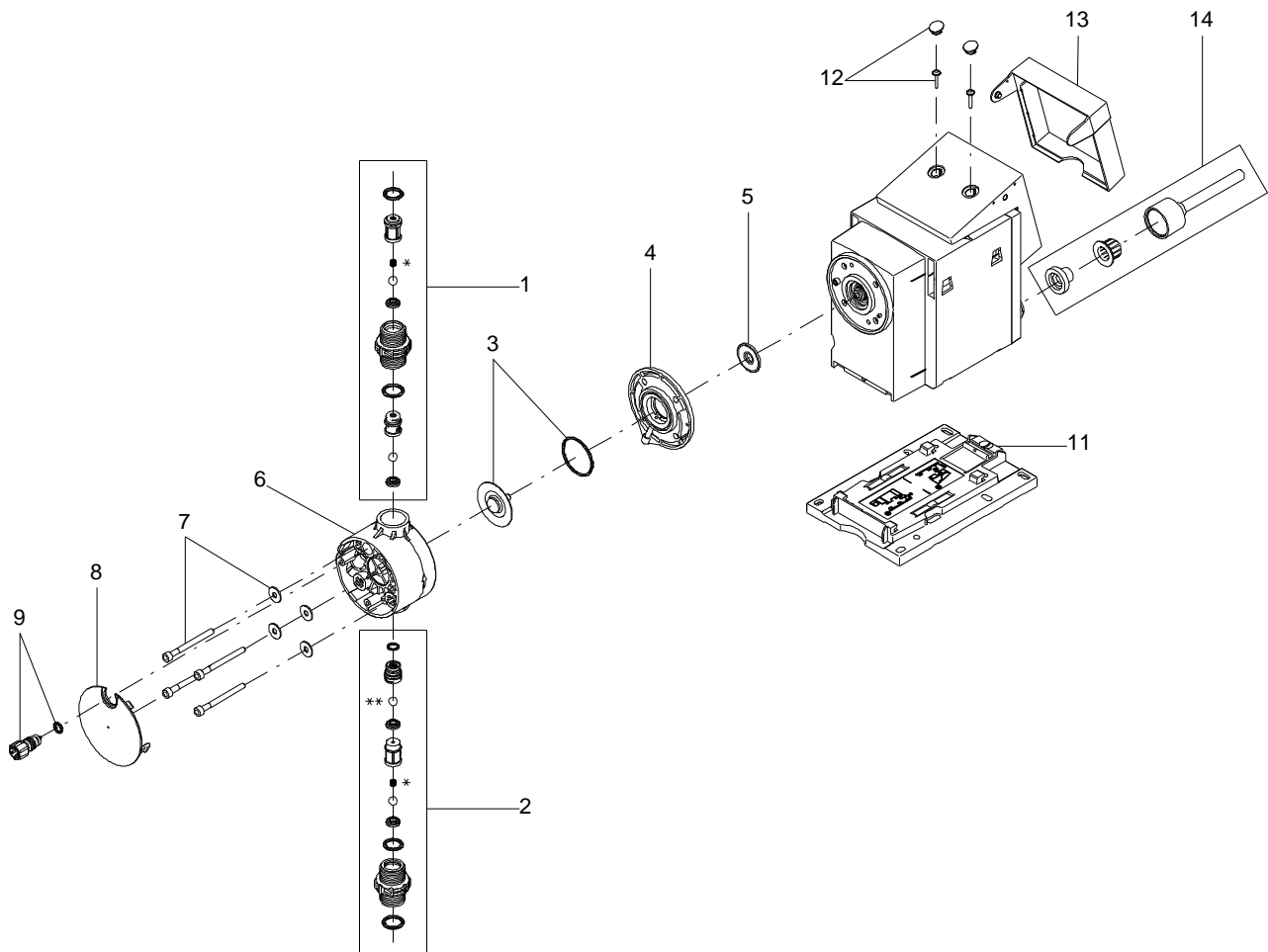
Product name: DDE 6-10

Amount: 1

Product No.: 97721109

Total: Price on request

Exploded view



166x112

Parts list DDE 6-10, Prod number 97721109

Produced After 1132 (production year and week number)

| Position | Description | Annotation | Classification data | Part No. | Count | Unit |
|----------|---------------------------|------------|---|----------|-------|------|
| - 1 | Discharge valve cpl. | | | | 1 | pcs |
| | O-ring | | | | 1 | |
| | O-ring | | | | 1 | |
| | Valve seat | | | | 1 | |
| | Ball | | | | 2 | |
| | Valve housing | | | | 1 | |
| | Ball cage | | | | 1 | |
| | Ball cage | | | | 1 | |
| - 2 | Suction valve cpl. | | | | 1 | pcs |
| | O-ring | | | | 1 | |
| | O-ring | | | | 1 | |
| | O-ring | | | | 1 | |
| | Valve seat | | | | 1 | |
| | Valve seat | | | | 1 | |
| | Ball | | | | 1 | |
| | Ball | | | | 1 | |
| | Valve housing | | | | 1 | |
| | Ball cage | | | | 1 | |
| | Ball cage | | | | 1 | |
| 3 | O-ring | | Diameter: 35 Material type: EPDM Thickness: 2 | | 1 | pcs |
| 3 | Diaphragm | | | | 1 | pcs |
| 4 | Pump head flange | | | | 1 | pcs |
| 5 | Diaphragm | | | | 1 | pcs |
| 6 | Dosing Head | | | | 1 | pcs |
| 7 | Washer | | | | 4 | pcs |
| 7 | Hex socket head cap screw | | | | 4 | pcs |
| 8 | Pump head cover | | | | 1 | pcs |
| - 9 | Venting valve | | | | 1 | pcs |
| | O-ring | | | | 1 | |
| | Spindle | | | | 1 | |
| 11 | Base plate | | | | 1 | pcs |
| 14 | Power cable | | | | 1 | pcs |