

PROJECT: _____	UNIT TAG: _____	QUANTITY: _____
REPRESENTATIVE: _____	TYPE OF SERVICE: _____	DATE: _____
ENGINEER: _____	SUBMITTED BY: _____	DATE: _____
CONTRACTOR: _____	APPROVED BY: _____	DATE: _____
	ORDER NO.: _____	DATE: _____

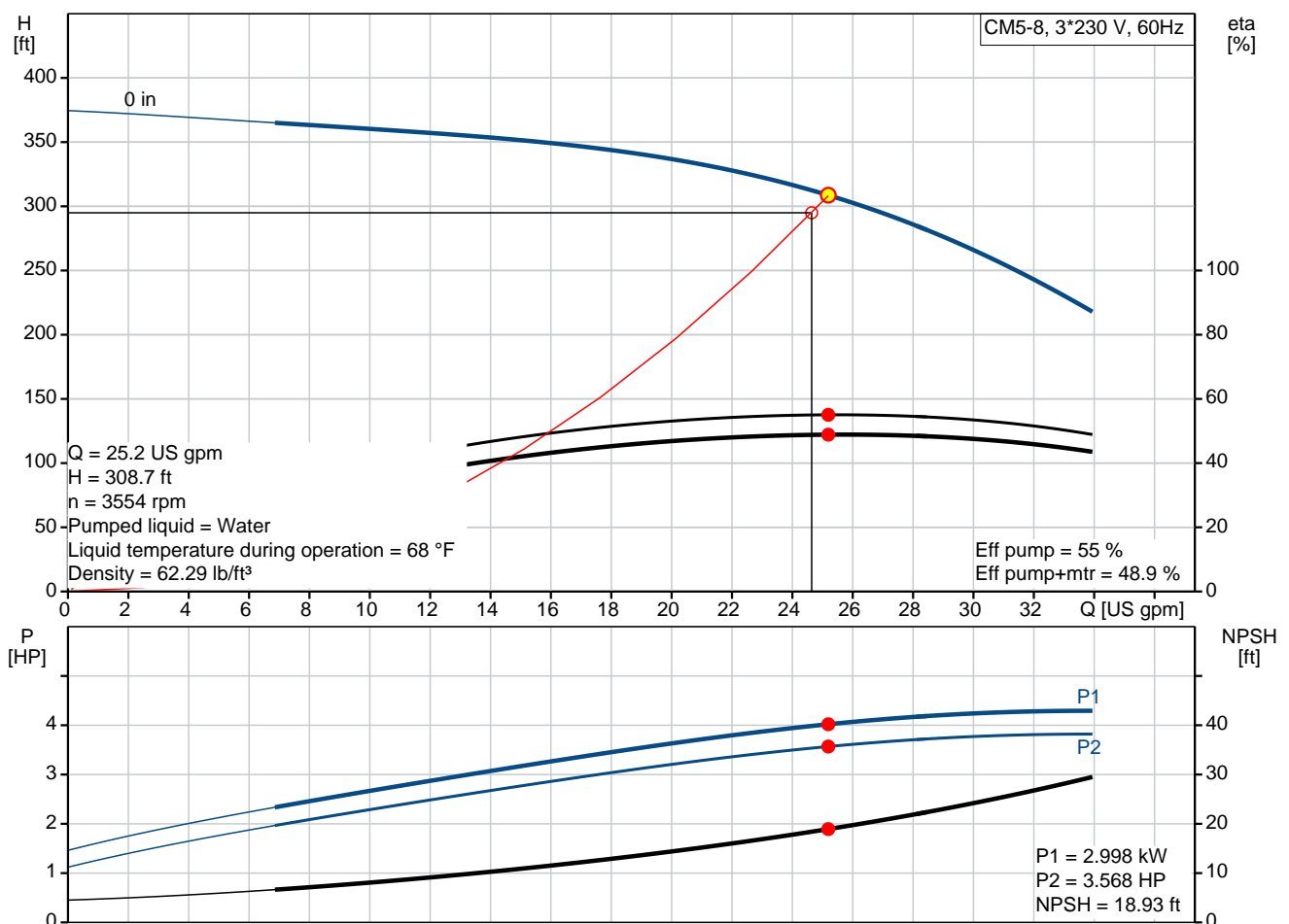
CM5-8

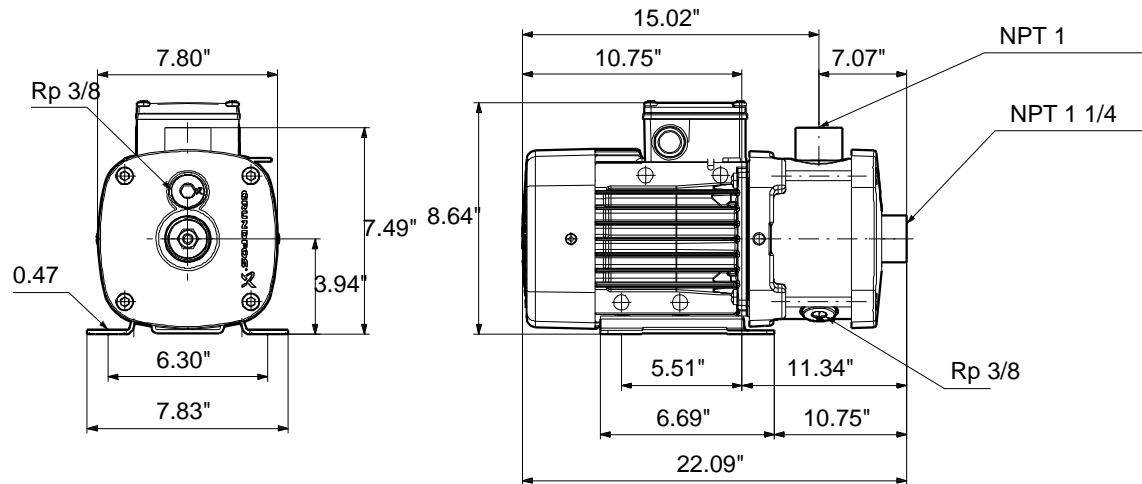


CM are reliable, quiet and compact horizontal end-suction pumps. The modular pump design makes it easy to make customised solutions. The CM pumps are available in cast iron and stainless steel

Product photo could vary from the actual product

Conditions of Service		Pump Data		Motor Data	
Flow:	25.2 US gpm	Maximum operating pressure:	232 psi	Rated power - P2:	5.5 HP
Head:	308.7 ft	Liquid temperature range:	-4 .. 194 °F	Rated voltage:	208-230YY/440-480Y V
Efficiency:	48.9 %	Maximum ambient temperature:	131 °F	Main frequency:	60 Hz
Liquid:	Water	Approvals:	CE,CULUS,WRAS,ACS,TR,CURUS,EAC	Enclosure class:	IP55
Temperature:	68 °F	Shaft seal:	AQQE	Insulation class:	F
NPSH required:	18.93 ft	Flange standard:	INTERNAL NPT THREAD	Motor protection:	NO
Viscosity:		Product number:	98125919	Motor type:	100BB
Specific Gravity:	1.000			Motor_efficiency:	87.5 %





Materials:

Pump housing: Stainless steel
DIN W.-Nr. 1.4301
AISI 304

Impeller: Stainless steel
DIN W.-Nr. 1.4301
AISI 304

Material code: I

Rubber: EPDM

Code for rubber: E

Tender Text

Product No.: [98125919](#)**CM5-8 A-S-I-E-AQQE**

CM is a compact horizontal multistage centrifugal pump, close-coupled with a: 3-phase, 208-230YY/440-480Y V, 60 Hz Hz. Foot mounted motor.

The pump is with axial suction port and radial discharge port including a special designed mechanical shaft seal in the solution AQQE.

Shaft, impellers, chambers and filling plugs are made of stainless steel.

Suction and discharge are made of Stainless steel.

The CM can also operate as a CME by connecting the motor to a CUE. Please find more information in the CUE part of Win/WebCAPS.

Liquid:

Pumped liquid: Water
Liquid temperature range: -4 .. 194 °F
Liquid temperature during operation: 68 °F
Density: 62.29 lb/ft³

Technical:

Speed for pump data: 3480 rpm
Actual calculated flow: 25.2 US gpm
Resulting head of the pump: 308.7 ft
Primary shaft seal: AQQE
Approvals on nameplate: CE,CULUS,WRAS,ACS,TR,CURUS,EAC
Curve tolerance: ISO9906:2012 3B

Materials:

Pump housing: Stainless steel
DIN W.-Nr. 1.4301
AISI 304
Impeller: Stainless steel
DIN W.-Nr. 1.4301
AISI 304
Rubber: EPDM

Installation:

Maximum ambient temperature: 131 °F
Maximum operating pressure: 232 psi
Max pressure at stated temperature: 232 psi / 194 °F
Flange standard: INTERNAL NPT THREAD
Pump inlet: NPT 1 1/4
Pump outlet: NPT 1

Electrical data:

Motor type: 100BB
IE Efficiency class: NEMA Premium / IE3 60Hz
Rated power - P2: 5.5 HP



Company name:

Created by:

Phone:


Date:

2/20/2018

Main frequency: 60 Hz
Rated voltage: 3 x 208-230YY/440-480Y V
Service factor: 1
Rated current: 14,8-14,2/7,2-7,0 A
Starting current: 1200-870 %
Rated speed: 3520-3530 rpm
Motor efficiency at full load: 87.5 %
Enclosure class (IEC 34-5): IP55
Insulation class (IEC 85): F

Others:

Minimum efficiency index, MEI : 0,7
Net weight: 72.2 lb
Gross weight: 77.7 lb

Position	Count	Description
	1	<p>CM5-8 A-S-I-E-AQQE</p>  <p>Product No.: 98125919</p> <p>CM is a compact horizontal multistage centrifugal pump, close-coupled with a: 3-phase, 208-230YY/440-480Y V, 60 Hz Hz. Foot mounted motor. The pump is with axial suction port and radial discharge port including a special designed mechanical shaft seal in the solution AQQE. Shaft, impellers, chambers and filling plugs are made of stainless steel. Suction and discharge are made of Stainless steel.</p> <p>The CM can also operate as a CME by connecting the motor to a CUE. Please find more information in the CUE part of Win/WebCAPS.</p> <p>Liquid: Pumped liquid: Water Liquid temperature range: -4 .. 194 °F Liquid temperature during operation: 68 °F Density: 62.29 lb/ft³</p> <p>Technical: Speed for pump data: 3480 rpm Actual calculated flow: 25.2 US gpm Resulting head of the pump: 308.7 ft Primary shaft seal: AQQE Approvals on nameplate: CE,CULUS,WRAS,ACS,TR,CURUS,EAC Curve tolerance: ISO9906:2012 3B</p> <p>Materials: Pump housing: Stainless steel DIN W.-Nr. 1.4301 AISI 304 Impeller: Stainless steel DIN W.-Nr. 1.4301 AISI 304 Rubber: EPDM</p> <p>Installation: Maximum ambient temperature: 131 °F Maximum operating pressure: 232 psi Max pressure at stated temperature: 232 psi / 194 °F Flange standard: INTERNAL NPT THREAD Pump inlet: NPT 1 1/4 Pump outlet: NPT 1</p> <p>Electrical data: Motor type: 100BB IE Efficiency class: NEMA Premium / IE3 60Hz Rated power - P2: 5.5 HP Main frequency: 60 Hz</p>



Company name:

Created by:

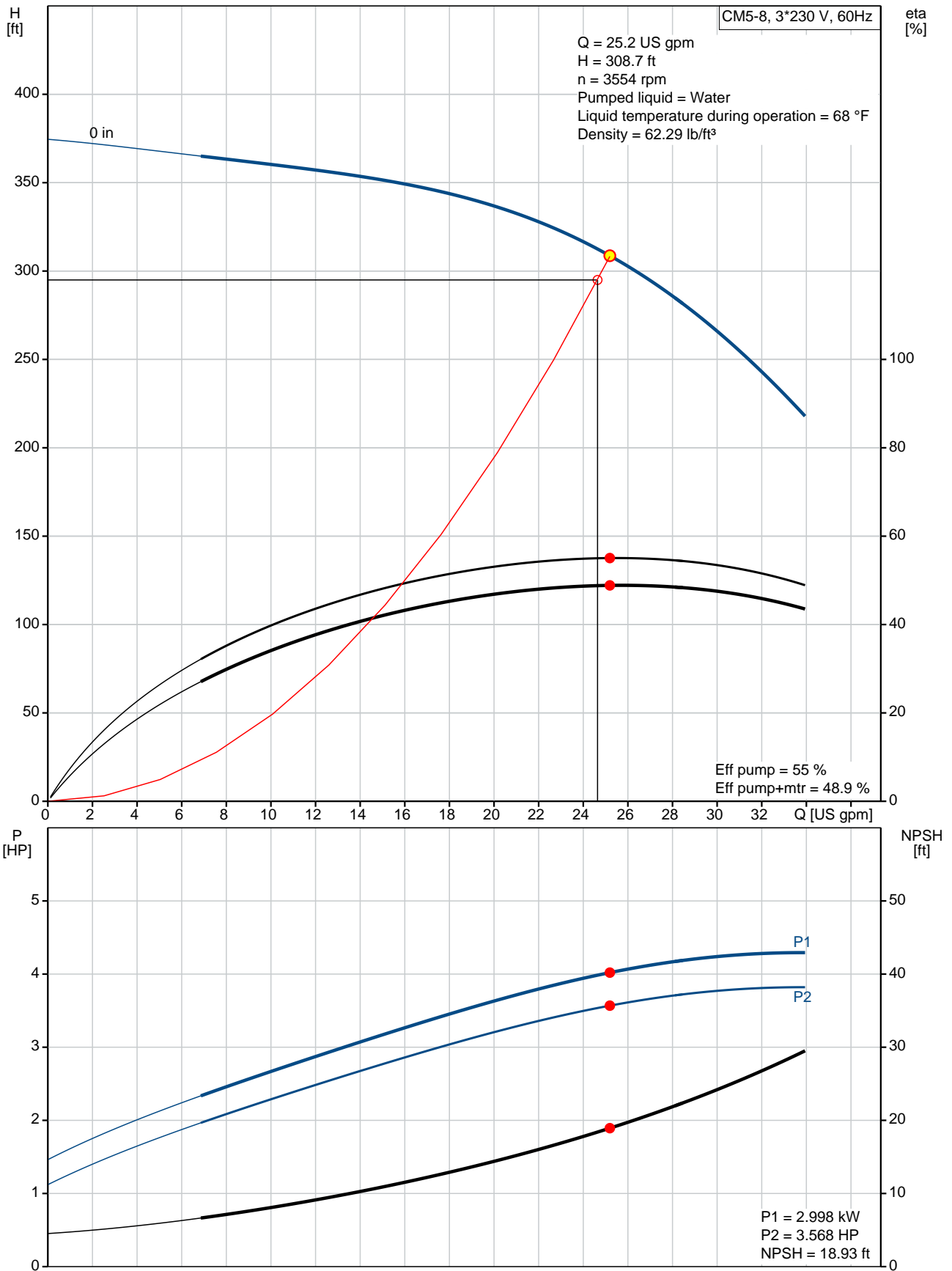
Phone:

Date:

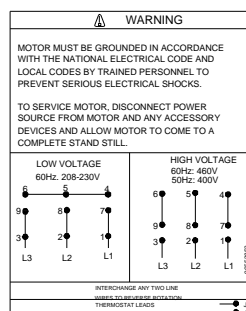
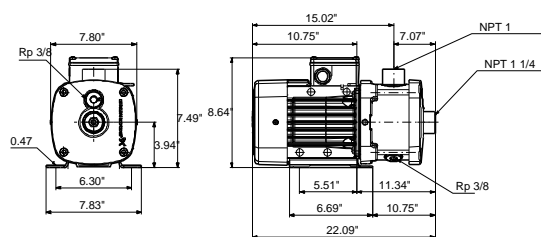
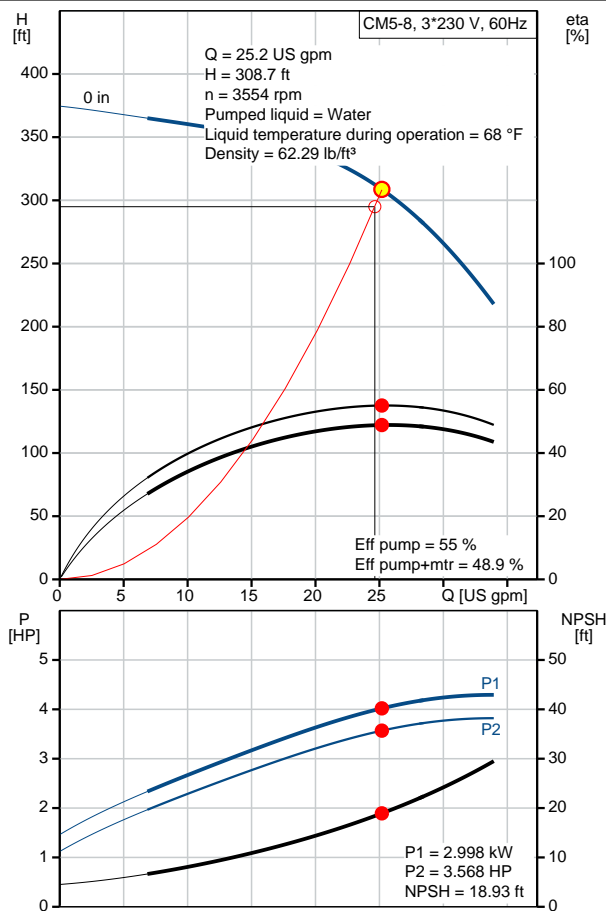
2/20/2018

Position	Count	Description
		<p>Rated voltage: 3 x 208-230YY/440-480Y V</p> <p>Service factor: 1</p> <p>Rated current: 14,8-14,2/7,2-7,0 A</p> <p>Starting current: 1200-870 %</p> <p>Rated speed: 3520-3530 rpm</p> <p>Motor efficiency at full load: 87.5 %</p> <p>Enclosure class (IEC 34-5): IP55</p> <p>Insulation class (IEC 85): F</p> <p>Others:</p> <p>Minimum efficiency index, MEI : 0,7</p> <p>Net weight: 72.2 lb</p> <p>Gross weight: 77.7 lb</p>

98125919 CM5-8 60 Hz



Description	Value
General information:	
Product name:	CM5-8 A-S-I-E-AQQE
Product No.:	98125919
EAN:	5710629474841
Technical:	
Speed for pump data:	3480 rpm
Actual calculated flow:	25.2 US gpm
Resulting head of the pump:	308.7 ft
Impellers:	8
Primary shaft seal:	AQQE
Approvals on nameplate:	CE,CULUS,WRAS,ACS,TR,CURUS,EAC
Curve tolerance:	ISO9906:2012 3B
Pump version:	A
Model:	A
Materials:	
Pump housing:	Stainless steel
	DIN W.-Nr. 1.4301
	AISI 304
Impeller:	Stainless steel
	DIN W.-Nr. 1.4301
	AISI 304
Material code:	I
Rubber:	EPDM
Code for rubber:	E
Installation:	
Maximum ambient temperature:	131 °F
Maximum operating pressure:	232 psi
Max pressure at stated temperature:	232 psi / 194 °F
Flange standard:	INTERNAL NPT THREAD
Connect code:	S
Pump inlet:	NPT 1 1/4
Pump outlet:	NPT 1
Liquid:	
Pumped liquid:	Water
Liquid temperature range:	-4 .. 194 °F
Liquid temperature during operation:	68 °F
Density:	62.29 lb/ft³
Electrical data:	
Motor type:	100BB
IE Efficiency class:	NEMA Premium / IE3 60Hz
Rated power - P2:	5.5 HP
Main frequency:	60 Hz
Rated voltage:	3 x 208-230YY/440-480Y V
Service factor:	1
Rated current:	14,8-14,2/7,2-7,0 A
Starting current:	1200-870 %
Rated speed:	3520-3530 rpm
Motor efficiency at full load:	87.5 %
Enclosure class (IEC 34-5):	IP55
Insulation class (IEC 85):	F
Motor protection:	NO
Others:	





Company name:

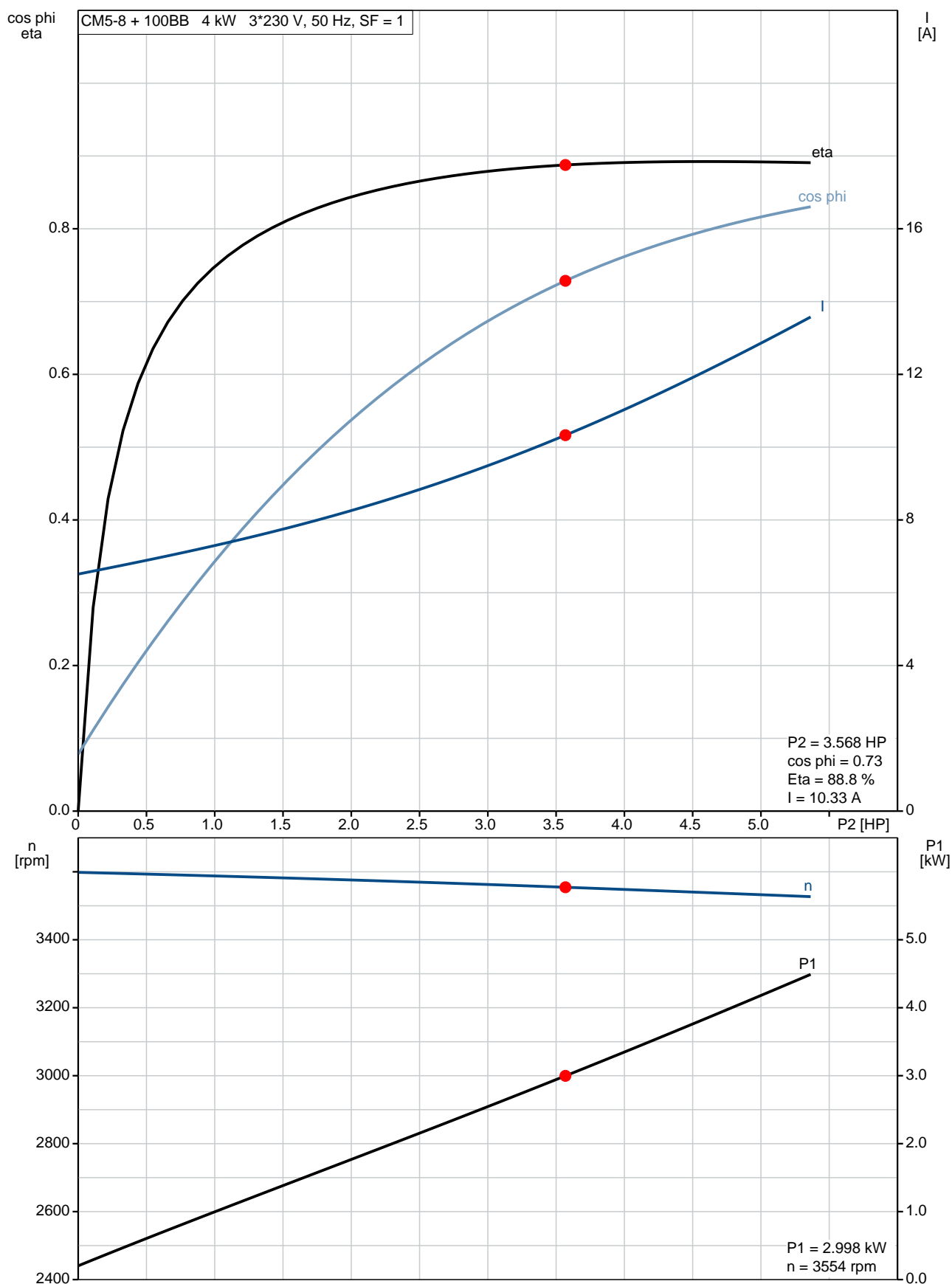
Created by:

Phone:

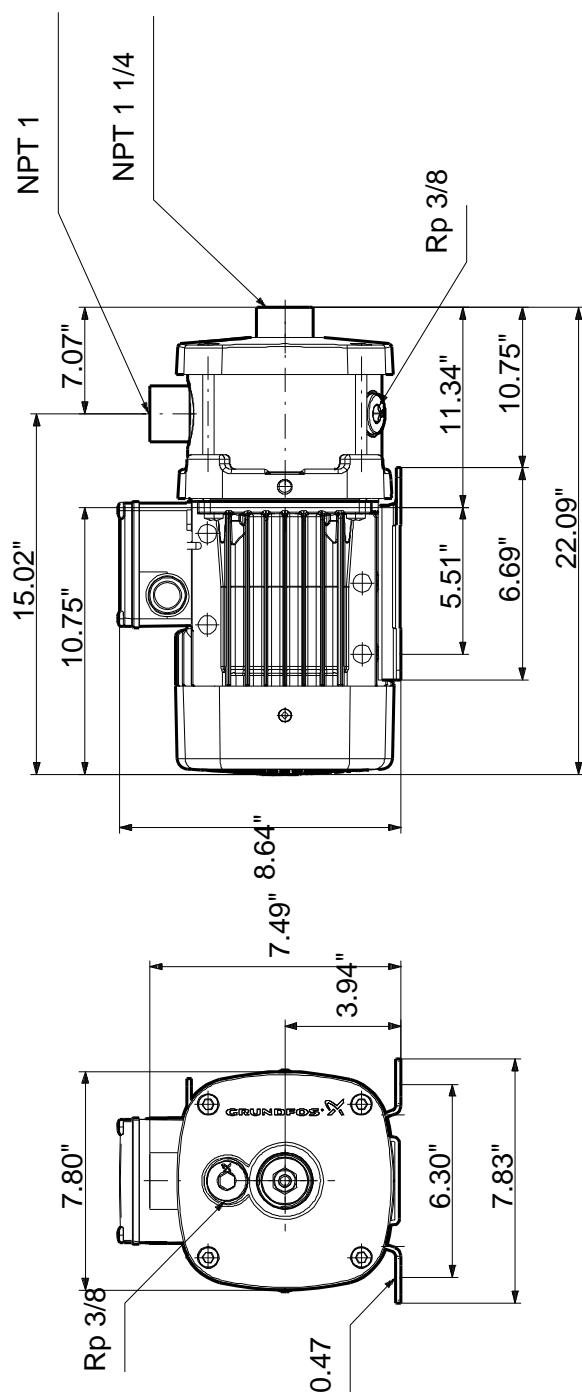
Date: 2/20/2018

Description	Value
Minimum efficiency index, MEI :	0,7
Net weight:	72.2 lb
Gross weight:	77.7 lb

98125919 CM5-8 60 Hz



98125919 CM5-8 60 Hz



Note! All units are in [mm] unless otherwise stated.
Disclaimer: This simplified dimensional drawing does not show all details.

98125919 CM5-8 60 Hz

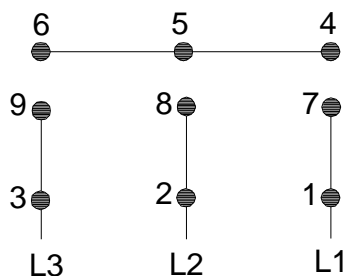


WARNING

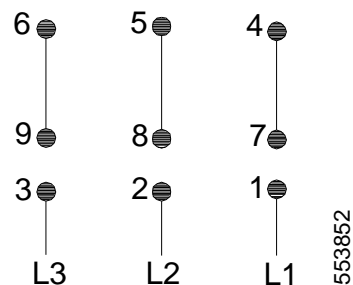
MOTOR MUST BE GROUNDED IN ACCORDANCE WITH THE NATIONAL ELECTRICAL CODE AND LOCAL CODES BY TRAINED PERSONNEL TO PREVENT SERIOUS ELECTRICAL SHOCKS.

TO SERVICE MOTOR, DISCONNECT POWER SOURCE FROM MOTOR AND ANY ACCESSORY DEVICES AND ALLOW MOTOR TO COME TO A COMPLETE STAND STILL.

LOW VOLTAGE 60Hz. 208-230V



HIGH VOLTAGE 60Hz: 460V 50Hz: 400V



96553852

INTERCHANGE ANY TWO LINE
WIRES TO REVERSE ROTATION

THERMOSTAT LEADS
(WHEN PROVIDED)





Company name:

Created by:

Phone:

Date:

2/20/2018

Order Data:

Product name: CM5-8 A-S-I-E-AQQE

Amount: 1

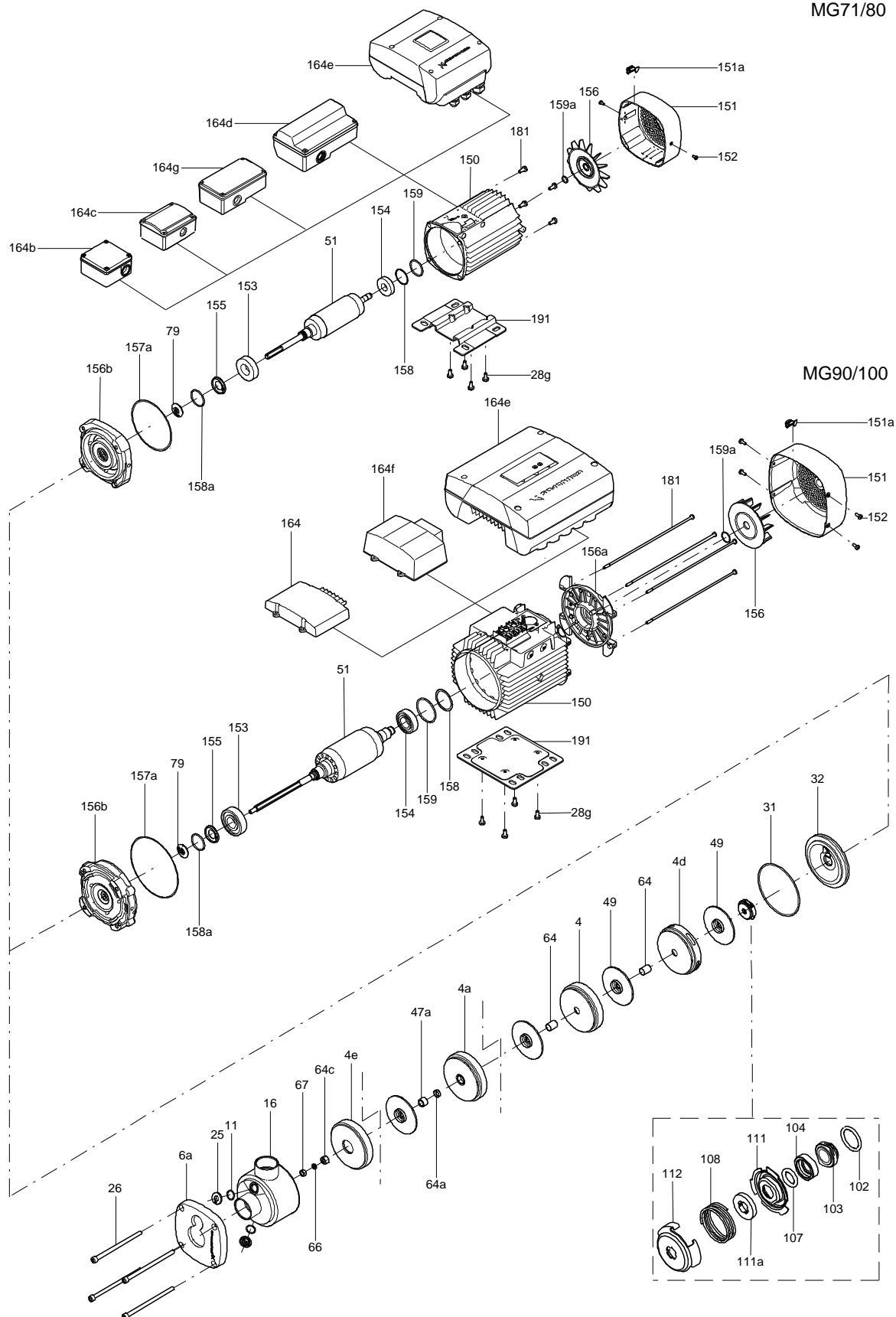
Product No.: 98125919

Total: Price on request

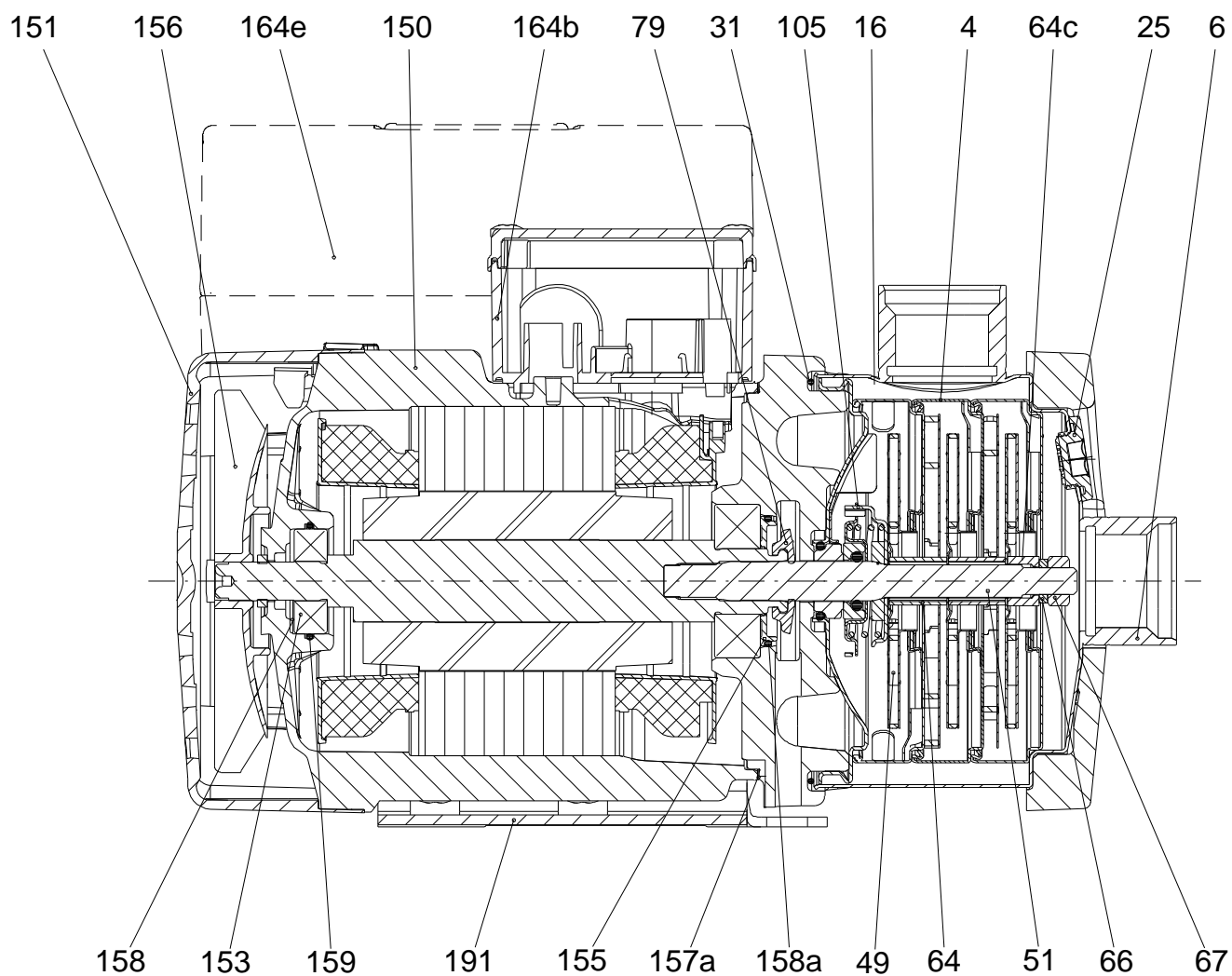
Exploded view (MG 71/80, MG 90/100)

MG71/80

MG90/100



Sectional drawing



165x100

Parts list CM5-8, Prod number 98125919

Valid from 2.7.2009 (0927)

Position	Description	Annotation	Classification data	Part No.	Count	Unit
-	Drain plug cpl.				2	pcs
11	O-ring		Diameter: 18,5		1	
			Material type: EPDM			
			Thickness: 2			
25	Plug				1	
	ML100BB				1	pcs
- 4	Chamber cpl.				5	pcs
	Guide vane				6	
	Plate				1	
	Retainer				1	
	Intermediate chamber				1	
	Vane				1	
45	Neck ring				1	
65	Retainer				1	
- 4.d	Chamber cpl.				1	pcs
	Chamber				1	
	Retainer for seal ring				1	
	Guide vane				6	
	Plate				1	
	Vane				1	
45	Neck ring				1	
65	Neck ring retainer				1	
- 4a	Chamber w. bearing cpl.				1	pcs
	Guide vane				6	
	Retainer for bearing				1	
	Bearing bush				1	
	Retainer				1	
	Intermediate chamber				1	
	Vane				1	
45	Neck ring				1	
65	Retainer				1	
- 5a	Chamber cpl.				1	pcs
	Retainer				1	
	Intermediate chamber				1	
	Vane				1	
45	Neck ring				1	
65	Retainer				1	
5a	Chamber, empty				1	pcs
6.a	Flange				1	pcs
16	Collar sleeve cpl.				1	pcs
26	Hex socket head cap screw		Length: 185		4	pcs
			Thread: M8			
28g	Cross recess countersunk screw		Designation: TORX		4	pcs
31	O-ring		Diameter: 114		1	pcs
			Material type: EPDM			
			Thickness: 3,9			
- 32	Cover plate				1	pcs
	Cover plate				1	
	Plate				1	
36	Lock nut		Thread: M8		1	pcs
47.a	Bearing ring				1	pcs
49	Impeller cpl.				8	pcs
51	Pump shaft		Diameter: D12		1	pcs

Position	Description	Annotation	Classification data	Part No.	Count	Unit
64	Spacing pipe				6	pcs
64.a	Spacing pipe				1	pcs
64.c	Clamp				1	pcs
66	Wedge lock washer				1	pcs
76	Nameplate				2	pcs
- 105	Shaft seal				1	pcs
102	O-ring		Diameter: 17,86 Material type: EPDM Thickness: 2,62		1	
103	Seal ring, stationary				1	
104	Seal ring, rotating				1	
107	O-ring				1	
108	Compression spring				1	
111	Retainer				1	
112	Driver for shaft seal				1	
111.a	Stop ring				1	pcs
151	Fan cover				1	pcs
151.a	Installation indicator				1	pcs
152	Pan head thread forming screw				4	pcs
156	Fan				1	pcs
191	Foot				1	pcs