


Count	Description																
1	<p><b>DDE 6-10</b></p>  <p>Product photo could vary from the actual product</p> <p>Product No.: <a href="#">98147336</a> DDE 6-10 PR-PVC/E/C-X-31U7U7BG</p> <p>The SMART Digital DDE is a compact positive displacement, diaphragm dosing pump with variable-speed drive (stepper motor) and intelligent control electronics with minimum energy consumption. The SMART Digital Dosing series operates at full stroke length to ensure optimum accuracy, priming and suction, even for degassing liquids. The duration of each discharge stroke varies according to the capacity set, resulting in optimum smooth and continuous discharge flow.</p> <p>The click-stop mounting plate allows installation in three different positions without using any additional accessories. The dosing flow can be adjusted by means of an adjustment knob on a logarithmical scale from 0.1-100%.</p> <p>The dosing head is composed of:</p> <ul style="list-style-type: none"> <li>- Long lifetime and universal chemical resistant Full-PTFE diaphragm.</li> <li>- Double ball valves for highest dosing accuracy.</li> <li>- Deaeration valve for easy start-up.</li> </ul> <p>Operation modes:</p> <ul style="list-style-type: none"> <li>- Manual dosing from 0.1 to 100%.</li> <li>- Pulse control (divisor function included).</li> </ul> <p>Other features:</p> <ul style="list-style-type: none"> <li>- 100 % key (max. capacity), e.g. for deaeration.</li> <li>- Operation mode switch key between manual and pulse.</li> <li>- Status LEDs for pulse and manual.</li> <li>- Mechanical lock to protect the pump against unauthorized access.</li> </ul> <p>Signal- Inputs/outputs:</p> <ul style="list-style-type: none"> <li>- Input for pulse, external stop.</li> <li>- Input for empty tank signal.</li> <li>- 2 potential free output relays for max. 30 V AC/DC (configurable, alarm, low level, full stroke signal and pulse)</li> </ul> <p><b>Controls:</b></p> <table> <tr> <td>Control variant:</td><td>PR</td></tr> <tr> <td>Ext. Stop input:</td><td>NO</td></tr> </table> <p><b>Liquid:</b></p> <table> <tr> <td>Pumped liquid:</td><td>Water</td></tr> <tr> <td>Liquid temperature range:</td><td>14 .. 113 °F</td></tr> <tr> <td>Selected liquid temperature:</td><td>68 °F</td></tr> <tr> <td>Density:</td><td>62.29 lb/ft³</td></tr> </table> <p><b>Technical:</b></p> <table> <tr> <td>Type key:</td><td>DDE 6-10 PR-PVC/E/C-X-31U7U7BG</td></tr> <tr> <td>Max. Flow:</td><td>1.585 US gal/hour</td></tr> </table>	Control variant:	PR	Ext. Stop input:	NO	Pumped liquid:	Water	Liquid temperature range:	14 .. 113 °F	Selected liquid temperature:	68 °F	Density:	62.29 lb/ft³	Type key:	DDE 6-10 PR-PVC/E/C-X-31U7U7BG	Max. Flow:	1.585 US gal/hour
Control variant:	PR																
Ext. Stop input:	NO																
Pumped liquid:	Water																
Liquid temperature range:	14 .. 113 °F																
Selected liquid temperature:	68 °F																
Density:	62.29 lb/ft³																
Type key:	DDE 6-10 PR-PVC/E/C-X-31U7U7BG																
Max. Flow:	1.585 US gal/hour																



Company name:

Created by:

Phone:

Date:

4/11/2019

Count	Description
	<p>Min flow: 6.0 ml/h Turn-down ratio: 1:1000 Approvals on nameplate: CE,CSA-US,NSF61,RCM Valve type: Standard Maximum viscosity at 100 %: 50 mPas Maximum viscosity in slow mode 50 %: N/A mPas Maximum viscosity in slow mode 25 %: N/A mPas Accuracy of repeatability: 5 %</p> <p><b>Materials:</b> Dosing head: PVC (Polyvinyl chloride) Valve ball: Ceramic Gasket: EPDM</p> <p><b>Installation:</b> Range of ambient temperature: 32 .. 113 °F Maximum operating pressure: 145.04 psi Installation set: NO Installation type: No installation set Pump inlet: 0.17x 1/4, 1/4x3/8, 3/8x1/2" Pump outlet: 0.17x 1/4, 1/4x3/8, 3/8x1/2" Max. Suction lift during operation: 19.7 ft Max. Suction lift during priming: 6.56 ft</p> <p><b>Electrical data:</b> Maximum power input - P1: 19 W Main frequency: 60 Hz Rated voltage: 1 x 100-240 V Enclosure class (IEC 34-5): IP65 / NEMA 4X Length of cable: 4.92 ft Type of cable plug: USA, Canada Inrush current: 25A at 230V for 2ms</p> <p><b>Others:</b> Net weight: 4.41 lb Gross weight: 6.62 lb</p>



Company name:

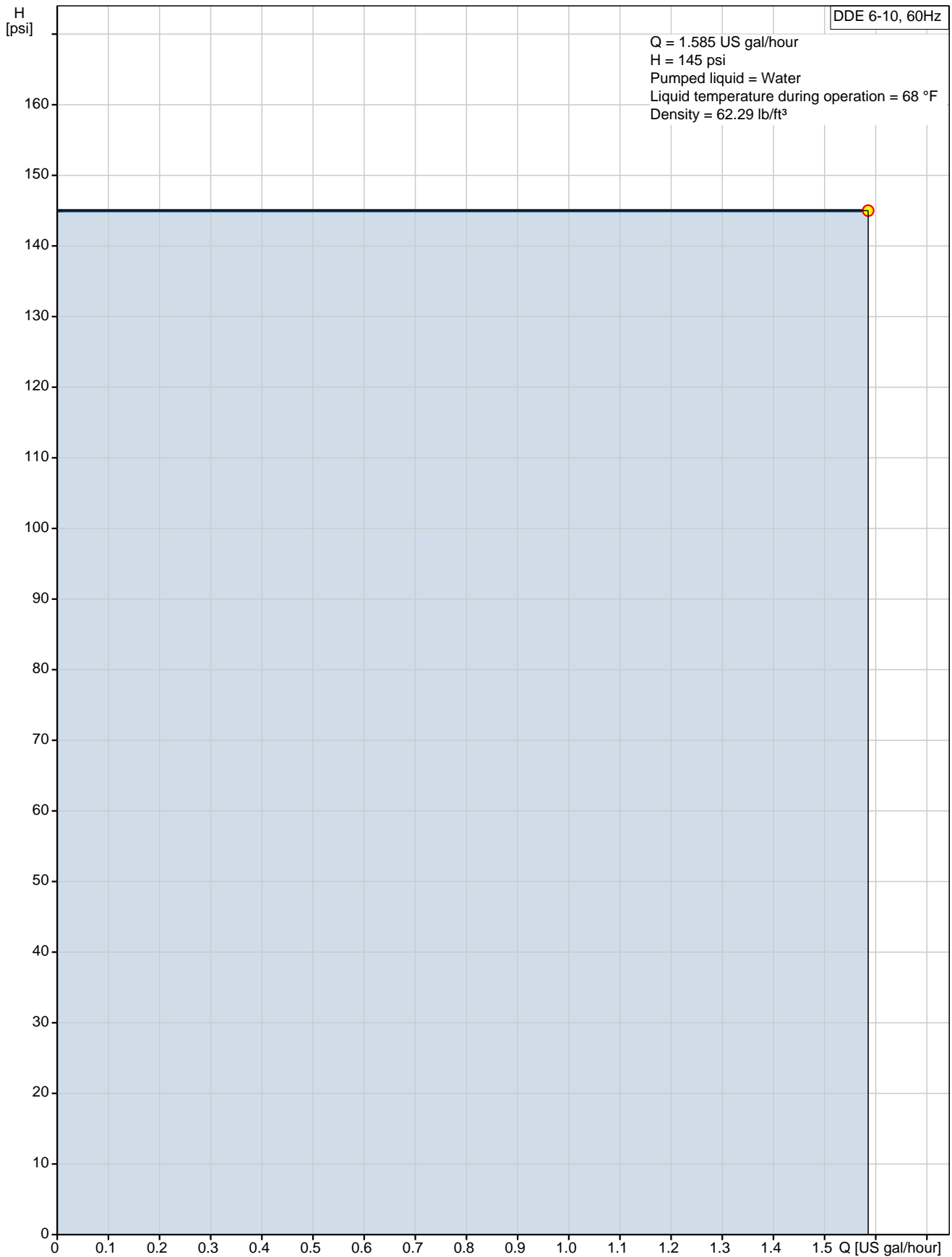
Created by:

Phone:

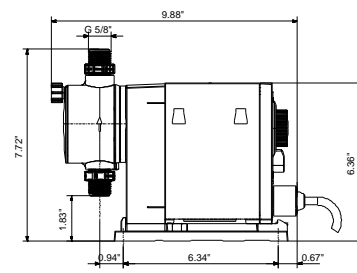
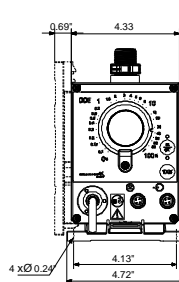
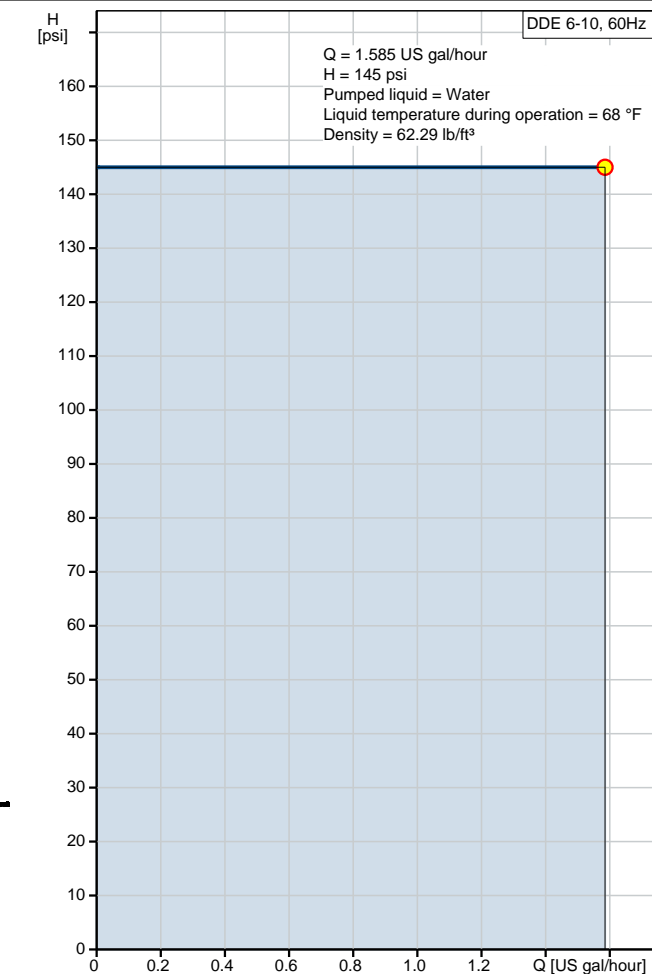
Date:

4/11/2019

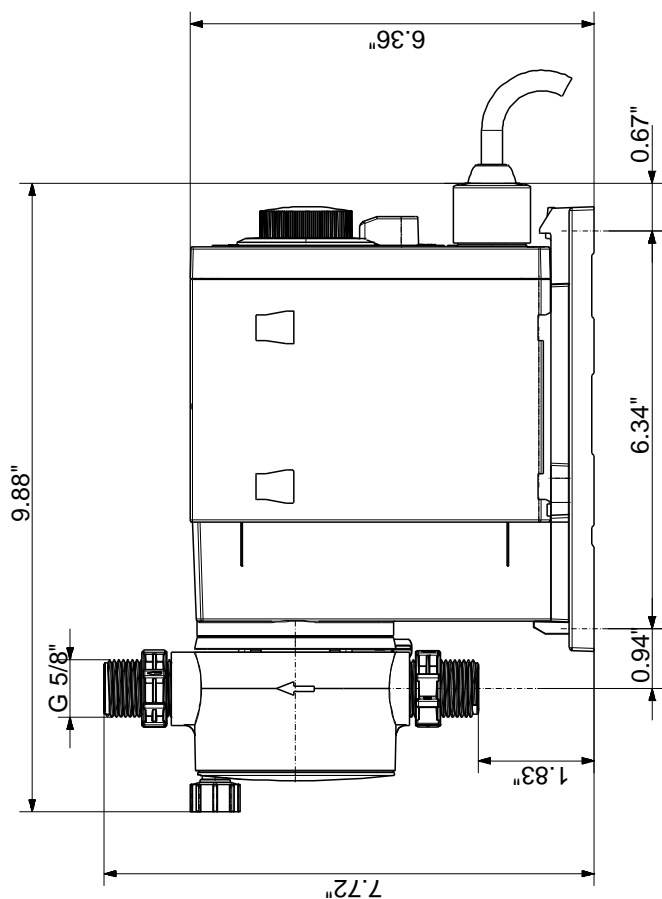
## 98147336 DDE 6-10 60 Hz



Description	Value
<b>General information:</b>	
Product name:	DDE 6-10
Product No.:	98147336
EAN:	5711490474336
<b>Technical:</b>	
Type key:	DDE 6-10 PR-PVC/E/C-X-31U7U7BG
Max. Flow:	1.585 US gal/hour
Min flow:	6.0 ml/h
Turn-down ratio:	1:1000
Approvals on nameplate:	CE, CSA-US, NSF61, RCM
Valve type:	Standard
Maximum viscosity at 100 %:	50 mPas
Maximum viscosity in slow mode 50 %:	N/A mPas
Maximum viscosity in slow mode 25 %:	N/A mPas
Accuracy of repeatability:	5 %
<b>Materials:</b>	
Dosing head:	PVC (Polyvinyl chloride)
Valve ball:	Ceramic
Gasket:	EPDM
<b>Installation:</b>	
Range of ambient temperature:	32 .. 113 °F
Maximum operating pressure:	145.04 psi
Installation set:	NO
Installation type:	No installation set
Pump inlet:	0.17x 1/4, 1/4x3/8, 3/8x1/2"
Pump outlet:	0.17x 1/4, 1/4x3/8, 3/8x1/2"
Max. Suction lift during operation:	19.7 ft
Max. Suction lift during priming:	6.56 ft
<b>Liquid:</b>	
Pumped liquid:	Water
Liquid temperature range:	14 .. 113 °F
Selected liquid temperature:	68 °F
Density:	62.29 lb/ft³
<b>Electrical data:</b>	
Maximum power input - P1:	19 W
Main frequency:	60 Hz
Rated voltage:	1 x 100-240 V
Enclosure class (IEC 34-5):	IP65 / NEMA 4X
Length of cable:	4.92 ft
Type of cable plug:	USA, Canada
Inrush current:	25A at 230V for 2ms
<b>Controls:</b>	
Control variant:	PR
Ext. Stop input:	NO
<b>Others:</b>	
Net weight:	4.41 lb
Gross weight:	6.62 lb



## 98147336 DDE 6-10 60 Hz



Note! All units are in [in] unless otherwise stated.  
Disclaimer: This simplified dimensional drawing does not show all details.



Company name:

Created by:

Phone:

Date:

4/11/2019

---

**Order Data:**

Product name: DDE 6-10

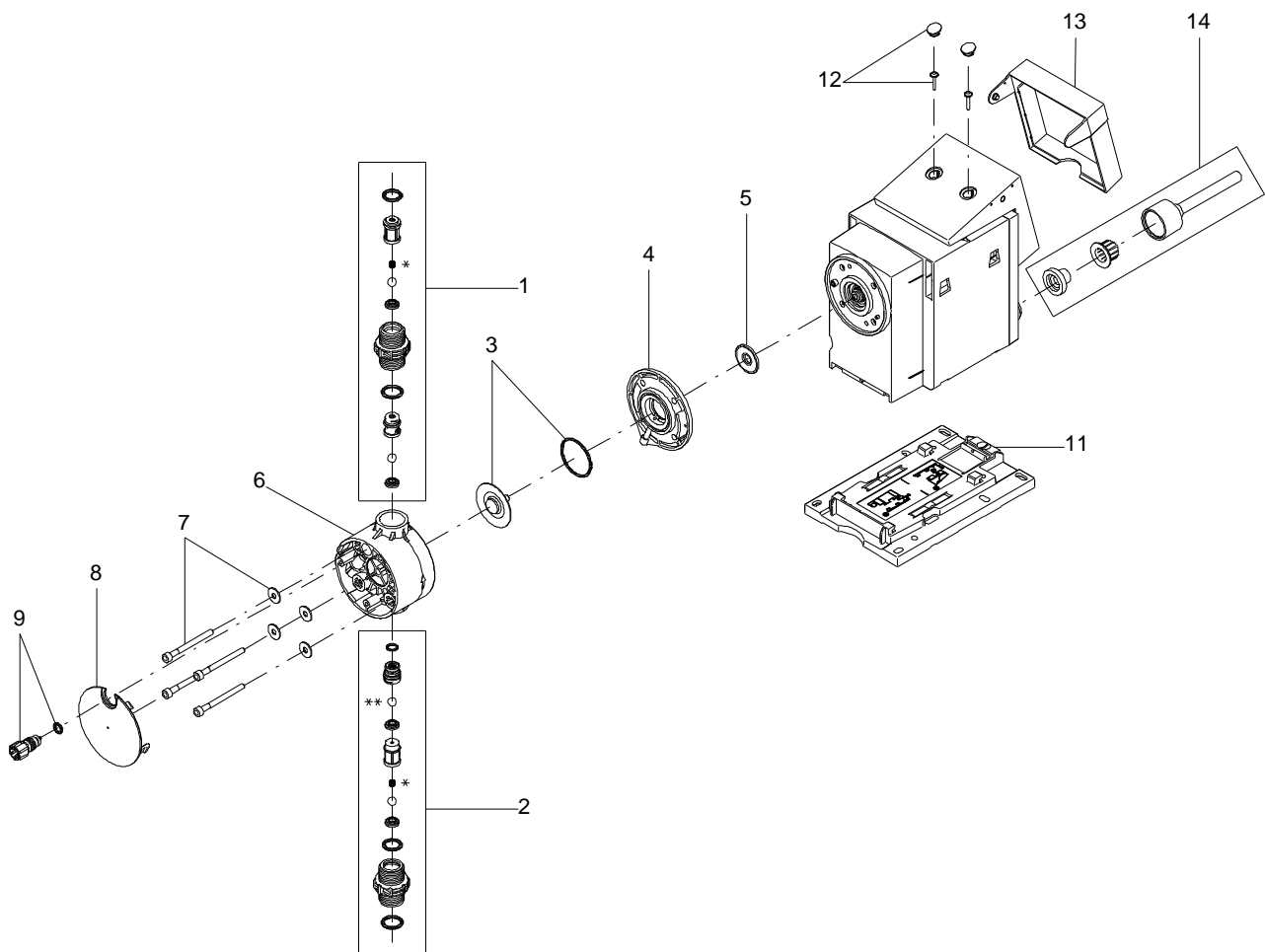
Amount: 1

Product No.: 98147336

Total: Price on request

---

## Exploded view



166x112

**Parts list DDE 6-10, Prod number 98147336**

**Produced After 1132 (production year and week number)**

Position	Description	Annotation	Classification data	Part No.	Count	Unit
	Bracket				1	pcs
	PCB				1	pcs
	Shaft				1	pcs
	Seal				1	pcs
	Installation				1	pcs
- 2	Suction valve cpl.				1	pcs
	O-ring				1	
	O-ring				1	
	O-ring				1	
	Valve seat				1	
	Valve seat				1	
	Ball				1	
	Ball				1	
	Valve housing				1	
	Ball cage				1	
	Ball cage				1	
3	O-ring		Diameter: 35		1	pcs
			Material type: EPDM			
			Thickness: 2			
6	Dosing Head				1	pcs
7	Washer				4	pcs
7	Hex socket head cap screw				4	pcs
12	Pan washer head screw				2	pcs
12	Pan washer head screw				4	pcs
12	Pan washer head screw				1	pcs
13a	Cover				1	pcs