

Tender Text



Product photo could vary from the actual product

Product No.: [98924048](#)

45S20-5

Multi-stage submersible pump for raw water supply, groundwater lowering and pressure boosting. The pump is suitable for pumping clean, thin, non-aggressive liquids without solid particles or fibers.

The pump is made entirely of Stainless steel DIN W.-Nr. EN 1.4301 and suitable for horizontal and vertical installation.

The pump is fitted with a built-in non-return valve.

type with a sand shield, liquid-lubricated bearings and pressure-equalizing diaphragm.

Liquid:

Pumped liquid: Water
Maximum liquid temperature: 104 °F
Liquid temperature during operation: 68 °F
Density: 62.29 lb/ft³

Technical:

Speed for pump data: 3450 rpm
Rated flow: 47.1 US gpm
Rated head: 118.8 ft
Curve tolerance: ISO9906:2012 3B

Materials:

Pump: Stainless steel
EN 1.4301
AISI 304
Impeller: Stainless steel
EN 1.4301
AISI 304

Installation:

Pump outlet: 2"NPT
Motor diameter: 4 inch

Electrical data:

Rated power - P2: 2 HP

Others:

ErP status: EuP Standalone/Prod.
Net weight: 13.7 lb
Gross weight: 17 lb



Company name:

Created by:


Phone:

Date:

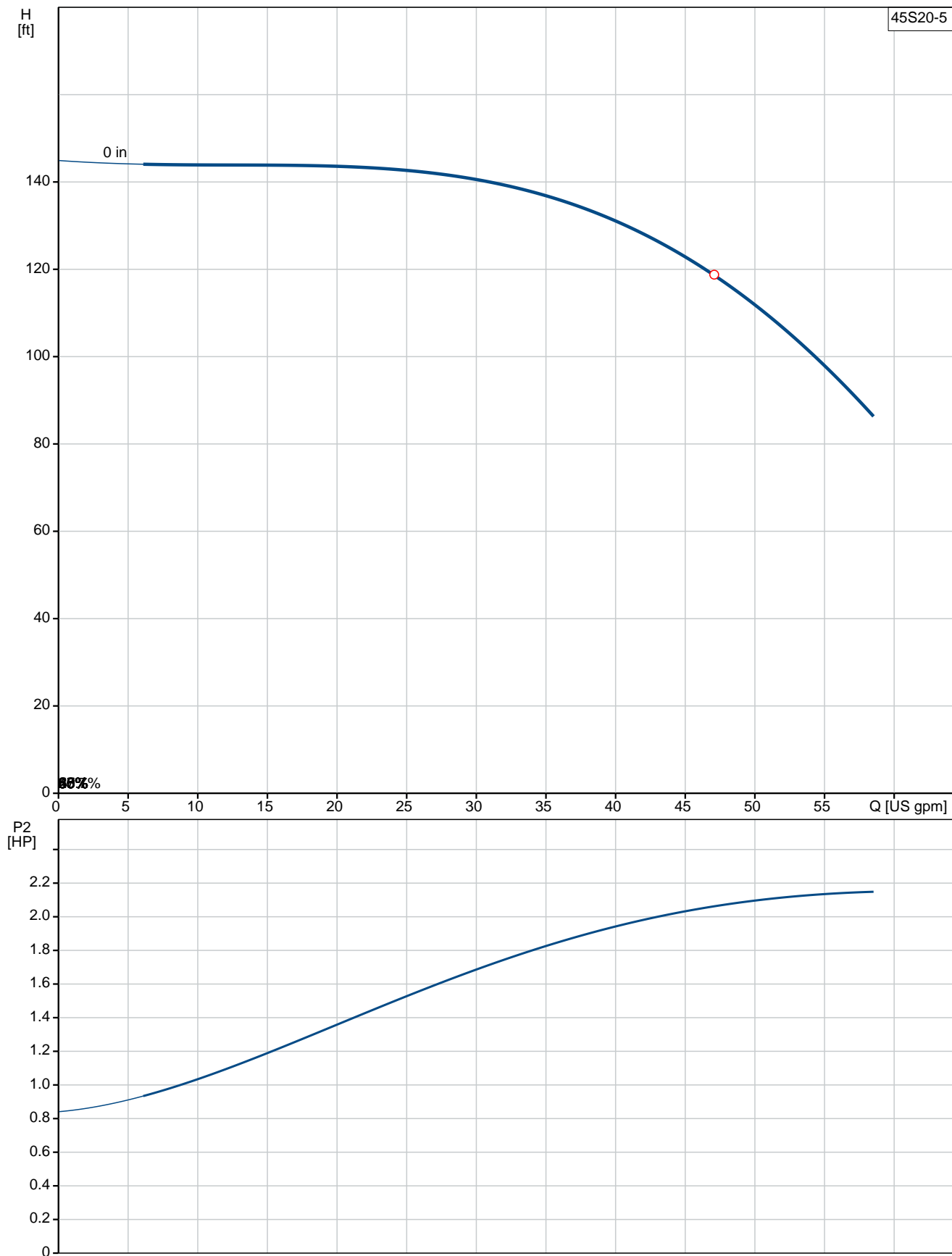
2/22/2018

Shipping volume:

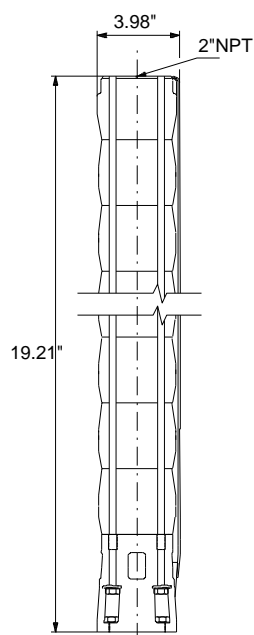
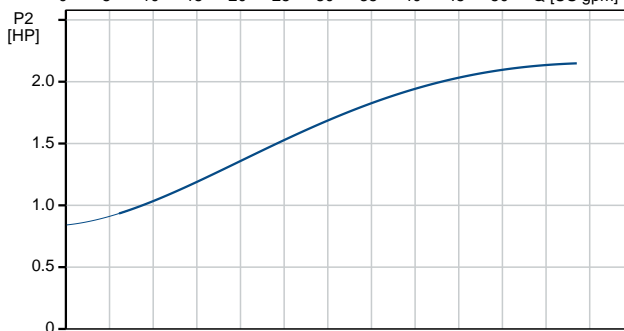
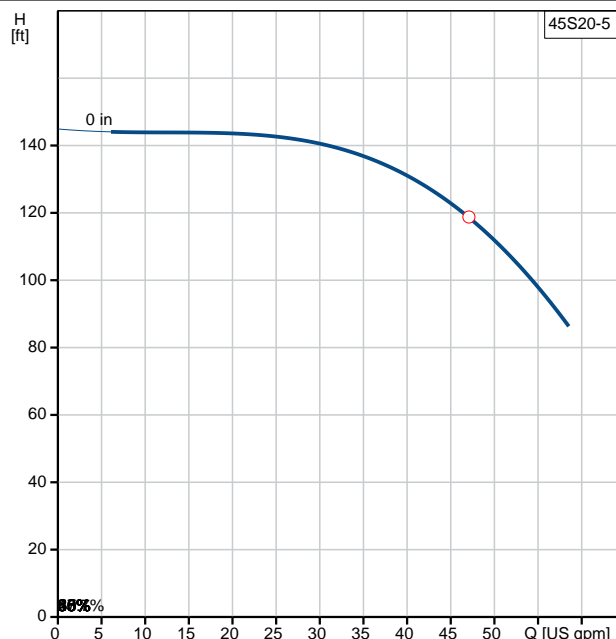
0.39 ft³

Position	Count	Description
	1	<p>45S20-5</p>  <p>Product photo could vary from the actual product</p> <p>Product No.: 98924048 Multi-stage submersible pump for raw water supply, groundwater lowering and pressure boosting. The pump is suitable for pumping clean, thin, non-aggressive liquids without solid particles or fibers.</p> <p>The pump is made entirely of Stainless steel DIN W.-Nr. EN 1.4301 and suitable for horizontal and vertical installation. The pump is fitted with a built-in non-return valve.</p> <p>type with a sand shield, liquid-lubricated bearings and pressure-equalizing diaphragm.</p> <p>Liquid: Pumped liquid: Water Maximum liquid temperature: 104 °F Liquid temperature during operation: 68 °F Density: 62.29 lb/ft³</p> <p>Technical: Speed for pump data: 3450 rpm Rated flow: 47.1 US gpm Rated head: 118.8 ft Curve tolerance: ISO9906:2012 3B</p> <p>Materials: Pump: Stainless steel EN 1.4301 AISI 304 Impeller: Stainless steel EN 1.4301 AISI 304</p> <p>Installation: Pump outlet: 2"NPT Motor diameter: 4 inch</p> <p>Electrical data: Rated power - P2: 2 HP</p> <p>Others: ErP status: EuP Standalone/Prod. Net weight: 13.7 lb Gross weight: 17 lb Shipping volume: 0.39 ft³</p>

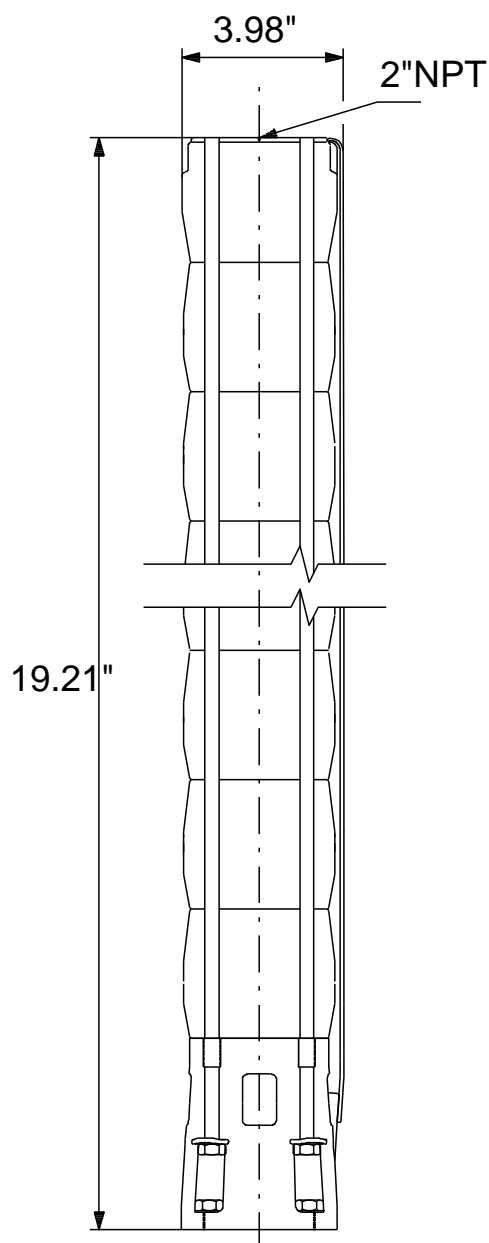
98924048 45S20-5 60 Hz



Description	Value
General information:	
Product name:	45S20-5
Product No.:	98924048
EAN:	5712603656106
Technical:	
Speed for pump data:	3450 rpm
Rated flow:	47.1 US gpm
Rated head:	118.8 ft
Stages:	5
Impeller reduc.:	NONE
Curve tolerance:	ISO9906:2012 3B
Model:	A
Valve:	YES
Materials:	
Pump:	Stainless steel
	EN 1.4301
	AISI 304
Impeller:	Stainless steel
	EN 1.4301
	AISI 304
Installation:	
Pump outlet:	2"NPT
Motor diameter:	4 inch
Liquid:	
Pumped liquid:	Water
Maximum liquid temperature:	104 °F
Liquid temperature during operation:	68 °F
Density:	62.29 lb/ft³
Electrical data:	
Applic. motor:	NEMA
Rated power - P2:	2 HP
Others:	
ErP status:	EuP Standalone/Prod.
Net weight:	13.7 lb
Gross weight:	17 lb
Shipping volume:	0.39 ft³



98924048 45S20-5 60 Hz



Note! All units are in [mm] unless otherwise stated.
Disclaimer: This simplified dimensional drawing does not show all details.



Company name:

Created by:

Phone:

Date:

2/22/2018

Order Data:

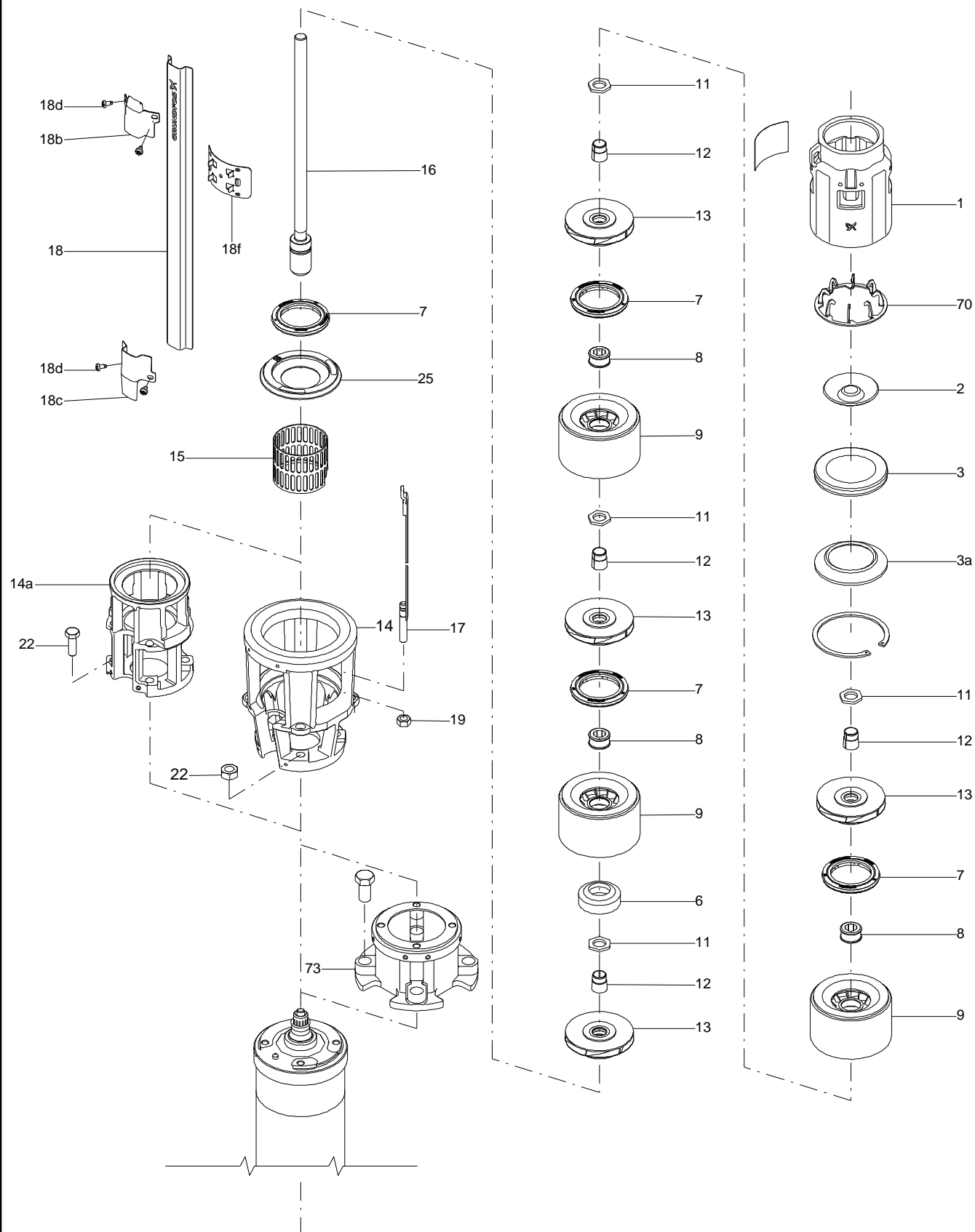
Product name: 45S20-5

Amount: 1

Product No.: 98924048

Total: Price on request

Exploded view (TM061865 for SP middle range)





Company name:

Created by:

Phone:

Date:

2/22/2018

Parts list 45S20-5, Prod number 98924048

Valid from 19.9.2014 (1438)

Position	Description	Annotation	Classification data	Part No.	Count	Unit
-	Shaft,cableg,strap				1	pcs
16	Shaft cpl.				1	
17	Strap cpl.				4	
18	Cable guard				1	
-	Stage cpl.				5	pcs
7	Seal ring				1	
8	Bearing				1	
9	Chamber cpl.				1	
11	Nut				1	
12	Split cone				1	
13	Impeller cpl.				1	
6	Upthrust bearing				1	pcs
7	Seal ring				1	pcs
14	Suction interconnector				1	pcs
15	Strainer				1	pcs
18b	Clamp				1	pcs
18c	Clamp				1	pcs
18d	Hex socket head cap screw				4	pcs
19	Nut				4	pcs
25	Retainer for seal ring				1	pcs