

## Tender Text



Product photo could vary from the actual product

Product No.: [98924077](#)

### 62S30-7

Multi-stage submersible pump for raw water supply, groundwater lowering and pressure boosting. The pump is suitable for pumping clean, thin, non-aggressive liquids without solid particles or fibers.

The pump is made entirely of Stainless steel DIN W.-Nr. EN 1.4301 and suitable for horizontal and vertical installation.

The pump is fitted with a built-in non-return valve.

type with a sand shield, liquid-lubricated bearings and pressure-equalizing diaphragm.

### Liquid:

Pumped liquid: Water  
Maximum liquid temperature: 104 °F  
Liquid temperature during operation: 68 °F  
Density: 62.29 lb/ft<sup>3</sup>

### Technical:

Speed for pump data: 3450 rpm  
Rated flow: 57.7 US gpm  
Rated head: 149 ft  
Curve tolerance: ISO9906:2012 3B

### Materials:

Pump: Stainless steel  
EN 1.4301  
AISI 304  
Impeller: Stainless steel  
EN 1.4301  
AISI 304

### Installation:

Pump outlet: 2"NPT  
Motor diameter: 4 inch

### Electrical data:

Rated power - P2: 3 HP

### Others:

ErP status: EuP Standalone/Prod.  
Net weight: 19.8 lb  
Gross weight: 23.6 lb



**Company name:**

**Created by:**

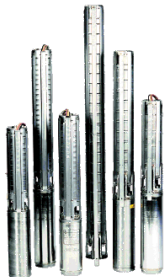
**Phone:**

**Date:**

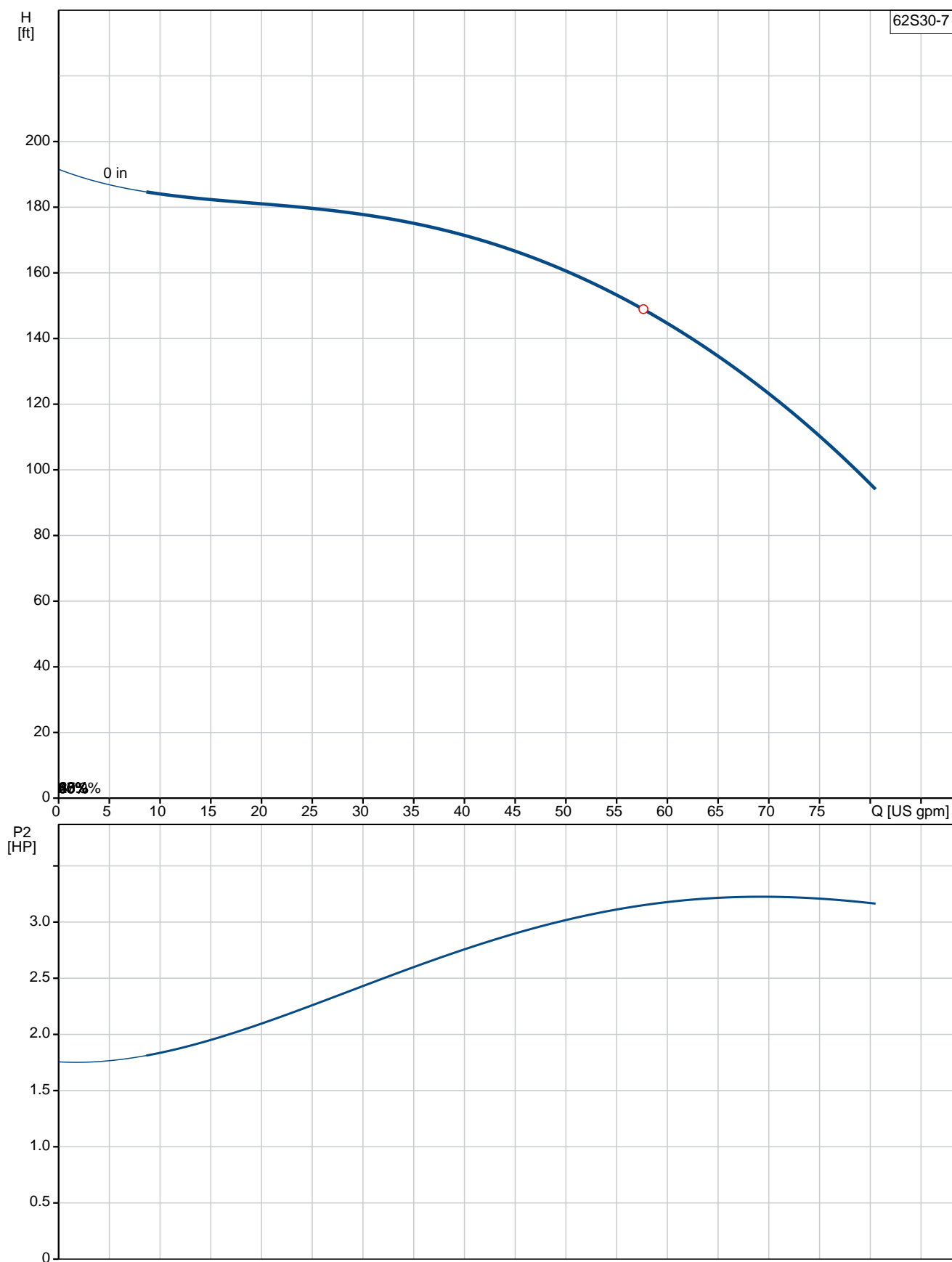
2/22/2018

Shipping volume:

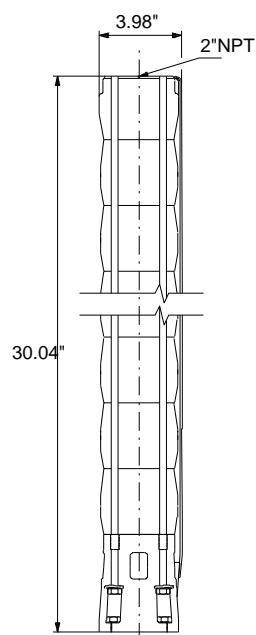
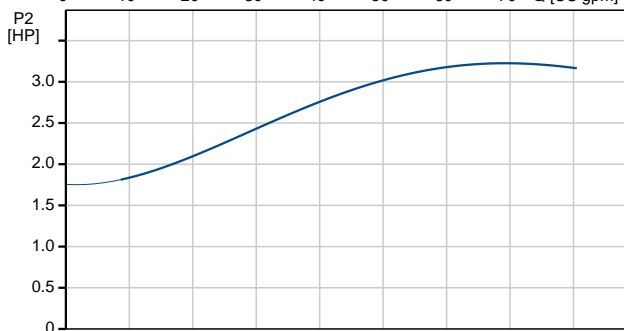
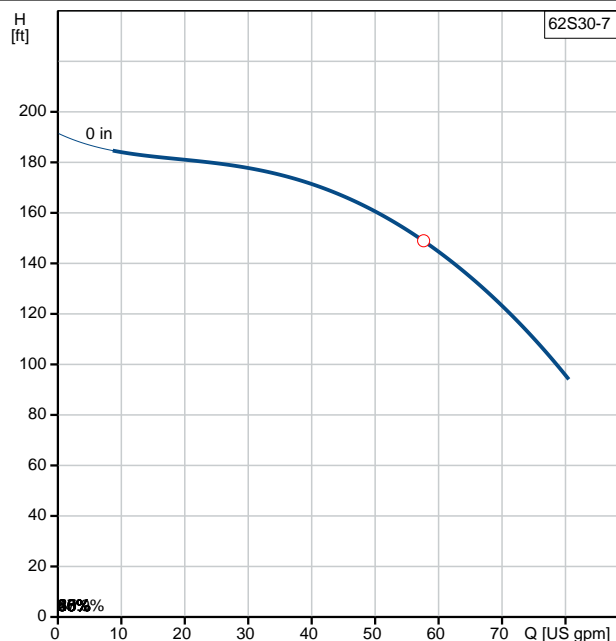
0.57 ft<sup>3</sup>

Position	Count	Description
	1	<p><b>62S30-7</b></p>  <p>Product photo could vary from the actual product</p> <p>Product No.: <a href="#">98924077</a></p> <p>Multi-stage submersible pump for raw water supply, groundwater lowering and pressure boosting. The pump is suitable for pumping clean, thin, non-aggressive liquids without solid particles or fibers.</p> <p>The pump is made entirely of Stainless steel DIN W.-Nr. EN 1.4301 and suitable for horizontal and vertical installation. The pump is fitted with a built-in non-return valve.</p> <p>type with a sand shield, liquid-lubricated bearings and pressure-equalizing diaphragm.</p> <p><b>Liquid:</b></p> <p>Pumped liquid: Water</p> <p>Maximum liquid temperature: 104 °F</p> <p>Liquid temperature during operation: 68 °F</p> <p>Density: 62.29 lb/ft<sup>3</sup></p> <p><b>Technical:</b></p> <p>Speed for pump data: 3450 rpm</p> <p>Rated flow: 57.7 US gpm</p> <p>Rated head: 149 ft</p> <p>Curve tolerance: ISO9906:2012 3B</p> <p><b>Materials:</b></p> <p>Pump: Stainless steel EN 1.4301 AISI 304</p> <p>Impeller: Stainless steel EN 1.4301 AISI 304</p> <p><b>Installation:</b></p> <p>Pump outlet: 2"NPT</p> <p>Motor diameter: 4 inch</p> <p><b>Electrical data:</b></p> <p>Rated power - P2: 3 HP</p> <p><b>Others:</b></p> <p>ErP status: EuP Standalone/Prod.</p> <p>Net weight: 19.8 lb</p> <p>Gross weight: 23.6 lb</p> <p>Shipping volume: 0.57 ft<sup>3</sup></p>

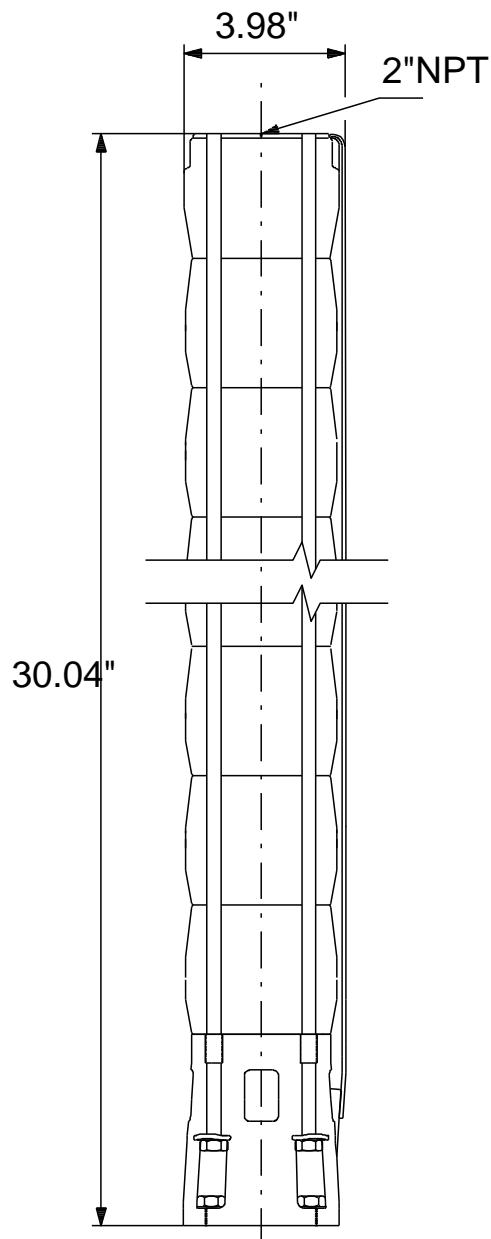
## 98924077 62S30-7 60 Hz



Description	Value
<b>General information:</b>	
Product name:	62S30-7
Product No.:	98924077
EAN:	5712603656670
<b>Technical:</b>	
Speed for pump data:	3450 rpm
Rated flow:	57.7 US gpm
Rated head:	149 ft
Stages:	7
Impeller reduc.:	NONE
Curve tolerance:	ISO9906:2012 3B
Model:	A
Valve:	YES
<b>Materials:</b>	
Pump:	Stainless steel
	EN 1.4301
	AISI 304
Impeller:	Stainless steel
	EN 1.4301
	AISI 304
<b>Installation:</b>	
Pump outlet:	2"NPT
Motor diameter:	4 inch
<b>Liquid:</b>	
Pumped liquid:	Water
Maximum liquid temperature:	104 °F
Liquid temperature during operation:	68 °F
Density:	62.29 lb/ft³
<b>Electrical data:</b>	
Applic. motor:	NEMA
Rated power - P2:	3 HP
<b>Others:</b>	
ErP status:	EuP Standalone/Prod.
Net weight:	19.8 lb
Gross weight:	23.6 lb
Shipping volume:	0.57 ft³



**98924077 62S30-7 60 Hz**



Note! All units are in [mm] unless otherwise stated.  
Disclaimer: This simplified dimensional drawing does not show all details.



Company name:

Created by:

Phone:

Date:

2/22/2018

---

**Order Data:**

Product name: 62S30-7

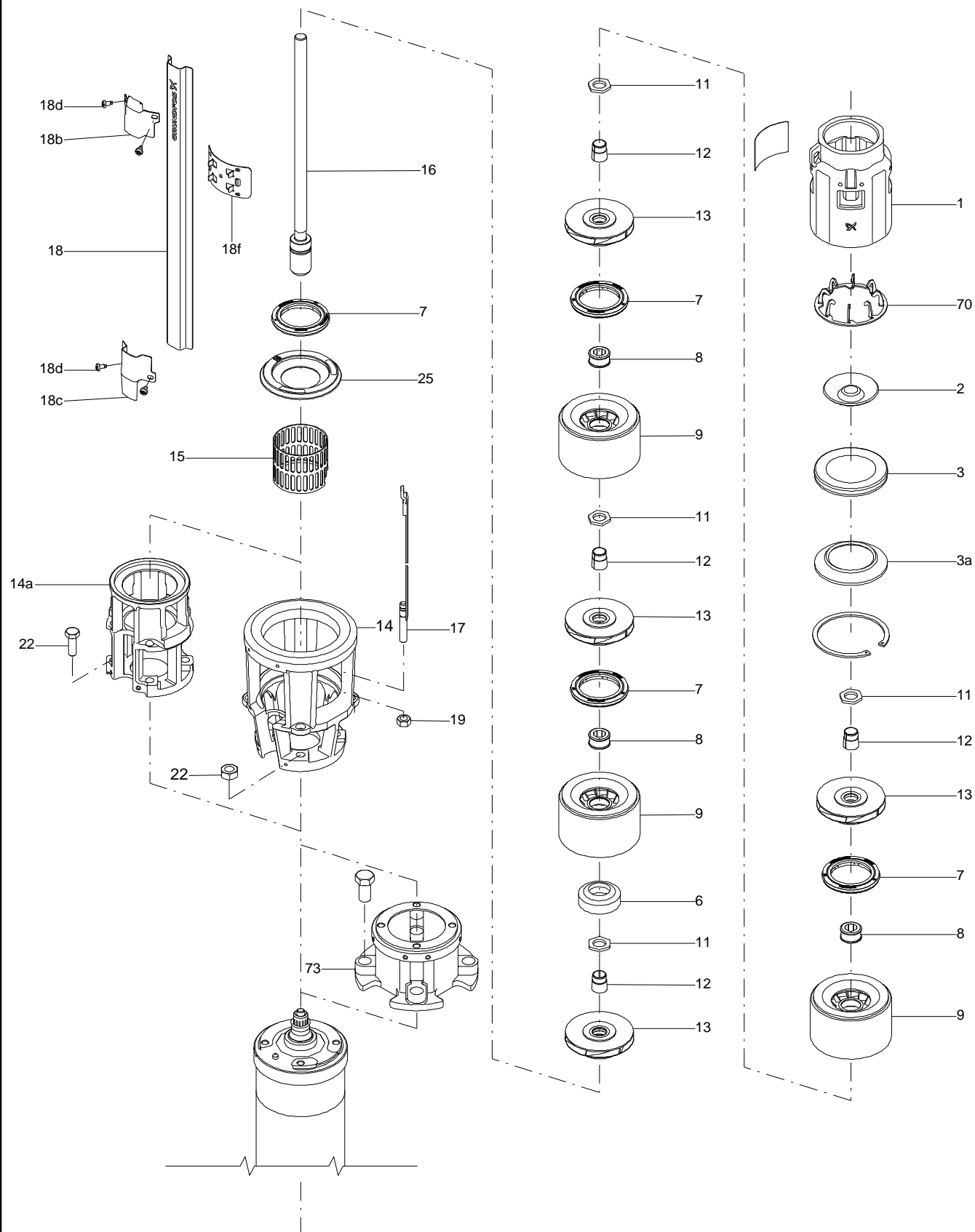
Amount: 1

Product No.: 98924077

Total: Price on request

---

## Exploded view ( TM061865 for SP middle range )







Company name:

Created by:

Phone:

Date:

2/22/2018

**Parts list 62S30-7, Prod number 98924077**

**Valid from 19.9.2014 (1438)**

Position	Description	Annotation	Classification data	Part No.	Count	Unit
-	Shaft,cableg,strap				1	pcs
16	Shaft cpl.				1	
17	Strap cpl.				4	
18	Cable guard				1	
-	Stage cpl.				7	pcs
7	Seal ring				1	
8	Bearing				1	
9	Chamber cpl.				1	
11	Nut				1	
12	Split cone				1	
13	Impeller cpl.				1	
6	Upthrust bearing				1	pcs
7	Seal ring				1	pcs
14	Suction interconnector				1	pcs
15	Strainer				1	pcs
18b	Clamp				1	pcs
18c	Clamp				1	pcs
18d	Hex socket head cap screw				4	pcs
19	Nut				4	pcs
25	Retainer for seal ring				1	pcs