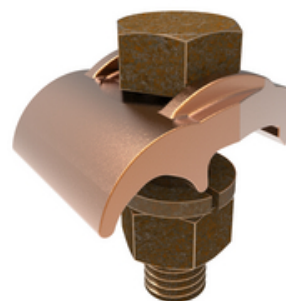




GBM26, Mechanical Grounding Connector, Cable to Bar

By Burndy
Catalog # [GBM26](#)

Mechanical Grounding Connector, Cable to 1/4" Thick Bar, 4 AWG (Sol)-2/0 AWG (Str), 3/8" Stud.



Application

For Copper Cable To Bar, Direct Burial Cable

General

Catalog Number	GBM26
EU RoHS Indicator	Yes
Installation Torque	240 lb-in
Recommended in-lb	
Material	Copper Alloy
Material Type - Screw	DURIUM™ Silicon Bronze
Physical Attribute - Screw Type	Hexagonal Bolt
Plated	N
Plating Type	Unplated
Sub Brand	MECHANICAL CONNECTOR
Type	GBM
UPC	781810231449
UPC 12 Digit	7818102314499

Dimensions

Dimension - Height inch	1.49 in
Dimension - L Length Overall mm	24 mm
Dimension - Length Overall inch	0.94 in
Dimension - Width fraction	1-1/3 in
Dimension - Width inch	1.34 in
Dimension - Width mm	34 mm

Conductor Related

Conductor - Copper Solid Size	4 AWG;3 AWG;2 AWG;1 AWG;1/0 AWG;2/0 AWG
Conductor - Copper Solid Size Range	#4 AWG-2/0 AWG
Conductor - Copper Str Size	4 AWG;3 AWG;2 AWG;1 AWG;1/0 ;2/0 AWG
Conductor - Copper Str Size Range	4 AWG - 2/0 AWG

Certifications And Compliance

Certification - CSA Approved	No
Certification - ETL	No
Certification - UL Listed Direct Burial	Yes
Certification - UL Recognized	No
Certification - cULus	No
Industry Standard(s)	UL467
Standards - Industry Standards Met	UL467
Standards - RoHS Compliance Status	EX
UL Listed	Yes

Logistics

Minimum Pack Quantity	1
-----------------------	---

Product Assets

[3D Models - GBM26_MODEL-STEP](#)
[3D Models - GBM26_MODEL-PDF](#)
[3D Models - GBM26_MODEL-IGES](#)
[Catalogs - Full Line BURNDY Catalog](#)
[Catalogs - Section E2 - Mechanical Grounding](#)
[Customer Notices - Prop 65 Notice](#)
[Product Cross Section Image\(s\) - BUR_GBM_Lineart](#)
[Sales Drawings - sc091658-01](#)



A proud member of the Hubbell Family.

©2024 Hubbell Incorporated. All rights reserved.
BRDY-GBM26-SPEC-EN | REV 6/2024

