

Operation MANUAL

MODE d'emploi

17 US Gallon (64 Litre) Low Profile Polypropylene Antifreeze Drain

**Cuvette de vidange d'antigel surbaissée
en polypropylène de 17 gallons US (64 litres)**



Product No. / N° du prod.

350520

Mod No. / N° du mod.

JOIDRLPAF

Warnings



IMPORTANT

READ THESE INSTRUCTIONS AND ALL WARNINGS PRIOR TO USING THIS EQUIPMENT. UNDERSTAND ALL OPERATING PROCEDURES, SAFETY WARNINGS AND MAINTENANCE REQUIREMENTS. FAILURE TO DO SO COULD CAUSE AN ACCIDENT RESULTING IN SERIOUS OR FATAL INJURY AND/OR PERSONAL PROPERTY DAMAGE.

WARNING

The use of shop equipment is subject to certain hazards that cannot be prevented by mechanical means, but only by exercise of intelligence, care, and common sense. It is therefore essential to have personnel involved in the use and operation of equipment who are careful, competent, trained, and qualified in the safe operation of this equipment and its proper use when servicing motor vehicles and their components.

The owner and / or operator shall study and understand the product and safety instructions before operating this equipment. Safety information shall be emphasized and understood. If the operator is not fluent in English, the product and safety instructions shall be read to and discussed with the operator in the operator's native language by the purchaser / owner or his designee, making sure that the operator comprehends their contents. **A copy of these instructions / warnings shall be retained for future reference.**

INSPECTION

Visual inspection shall be made before each use of this equipment, checking for abnormal conditions, such as cracked welds, leaks, damaged, loose or missing parts. This equipment shall be removed immediately from service if it is believed to have been subjected to an abnormal or shock load, the equipment shall be inspected by a qualified repair facility. Owners and / or operators should be aware that repair of this equipment may require specialized knowledge and facilities. It is recommended that this equipment be inspected annually by a qualified repair facility. Defective parts, decals, safety labels or signs should be replaced with JET specified parts.

WARNING

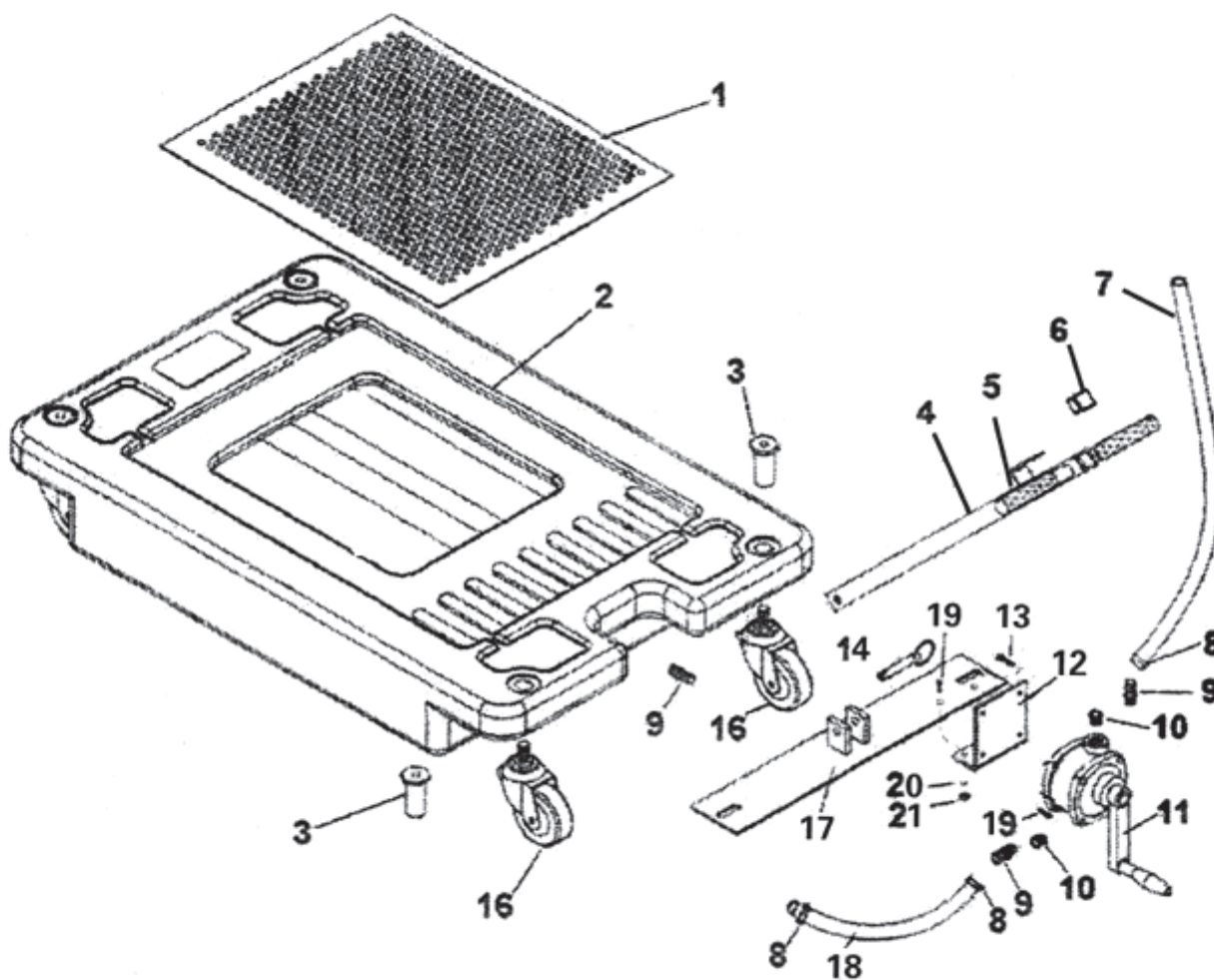
- Wear protective eyewear such as safety goggles, safety glasses or face shield to protect from splashing antifreeze
- **BURN HAZARD** – be aware that engine antifreeze may be hot enough to burn or scald skin – either wait for the engine antifreeze to cool or take appropriate measures to protect yourself from burns
- Properly dispose of / recycle antifreeze using local guidelines
- **FIRE HAZARD** – antifreeze is flammable **NEVER USE NEAR OPEN FLAMES OR HEAT SOURCES**
- Do not overfill the antifreeze drain, exercise caution when transporting the antifreeze drain with antifreeze in it to avoid splashing and potential spills
- **SLIP HAZARD** - Always clean up spills or splashes immediately
- **NEVER WORK UNDER AN UNSUPPORTED VEHICLE**

Assembly

ATTACHING THE HANDLE AND PUMP ASSEMBLY

To mount the Handle # 4 and Pump Assembly # 11, you will need to partially disassemble the Rear Caster Bracket.

- 1) Remove Right Caster Bolt # 3 from right Caster # 16 and slide out the Mounting Plate # 17.
- 2) Attach Handle # 4 to Mounting Plate # 17 using Pin # 14
- 3) Attach Pump Mounting Bracket # 12 to Mounting Plate # 17 with provided nuts and bolts.
- 4) Re-attach Mounting Plate # 17 and Right Caster
- 5) Attach Pump # 11 to Mounting Bracket # 12 with provided bolts.
- 6) Attach Short Hose # 18 to Hose Fittings # 9 on bottom of Pump # 11 and bottom of Tank # 2 with Hose Clamps # 8
- 7) Attach Long Hose # 7 to Hose Fitting # 9 on top of Pump # 11 with Hose Fitting # 8



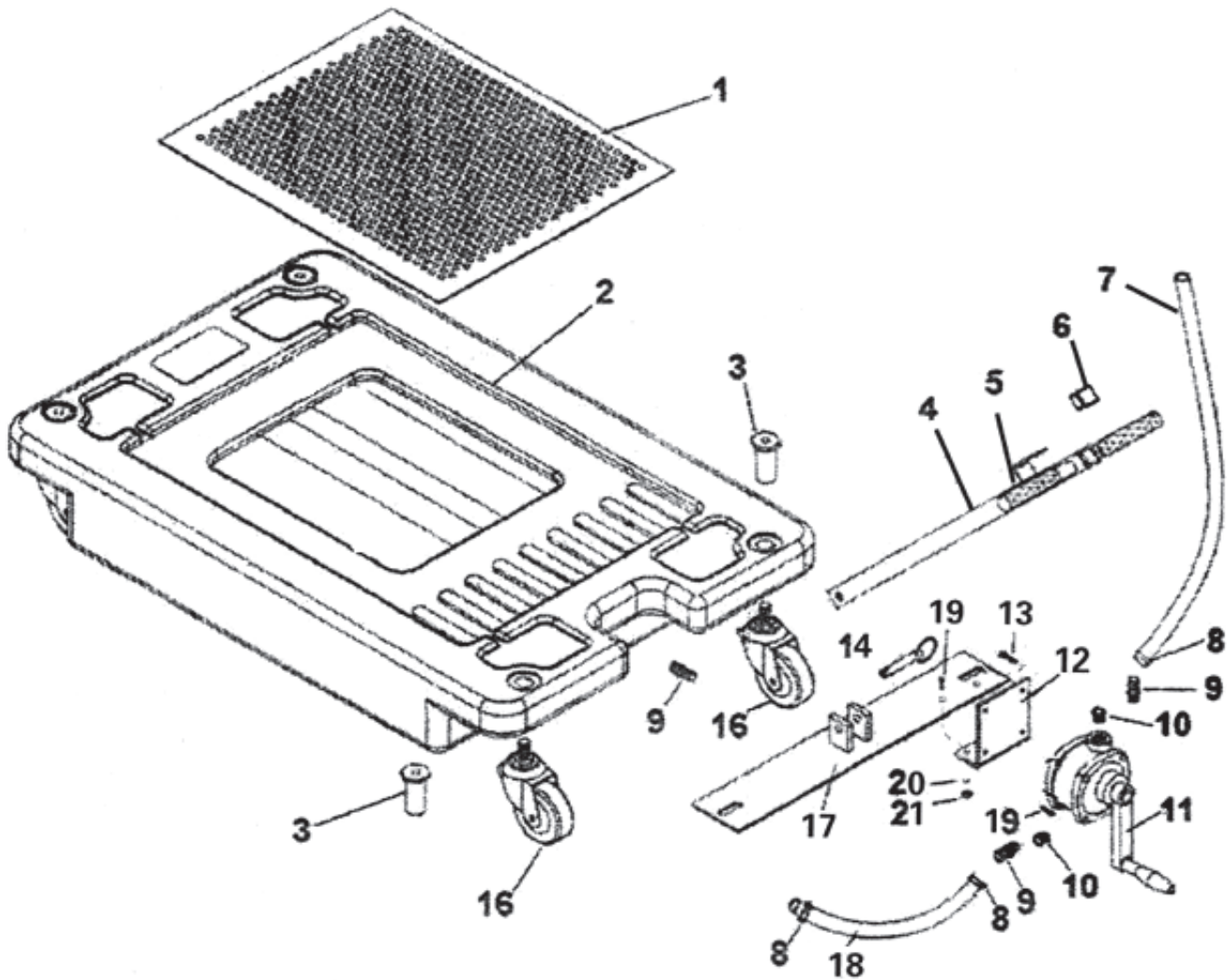
Operation

WARNING – FOLLOW ALL SAFETY PRECAUTIONS LISTED IN THIS MANUAL

- 1) Place the opening of the antifreeze drain in such a manner as to catch the excessive flow of the antifreeze stream that occurs when first removing a hose or drain plug of the vehicle and also taking into account the path of the antifreeze as the flow slows
- 2) **ANTIFREEZE CAN BE HOT** – Carefully remove any hose or plug
- 3) **FIRE HAZARD** – Antifreeze is flammable NEVER USE NEAR OPEN FLAMES OR HEAT SOURCES
- 4) To drain the contents of the antifreeze basin – insert the end of the Long Hose (#7) into an appropriate bulk storage tank and crank the handle of the pump until the antifreeze has been evacuated from the antifreeze basin.

NOTE: IT IS RECOMMENDED THAT YOU DO NOT MIX ANTIFREEZE WITH OTHER FLUIDS.

Parts Breakdown



REF.	Part Number	Description
1	PCN-JOIDRLP-1	Screen
16	PCN-JOIDRLP-16	Caster Wheel Assy. Including # 3 Locknut
4	PCN-JOIDRLP-4	Handle With # 5 Flex Grip # 6 Plug
7	PCN-JOIDRLP-7	Long Hose
9	PCN-JOIDRLP-9	Hose Fitting
10	PCN-JOIDRLP-10	Connector
11	PCN-JOIDRLPAF-11	Aluminum Pump With Handle
15	PCN-JOIDRLP-15	Pin
18	PCN-JOIDRLP-18	Short Hose