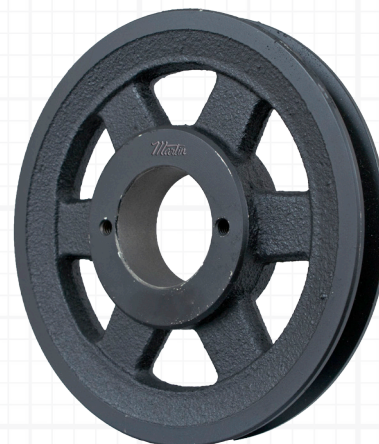
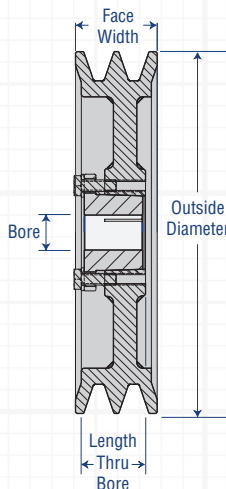
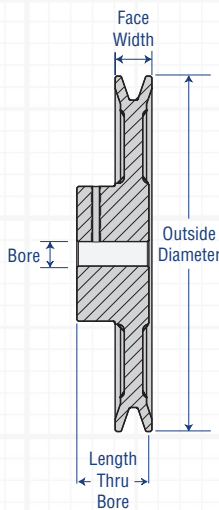




FHP and VP Sheave Nomenclature

FHP Sheaves

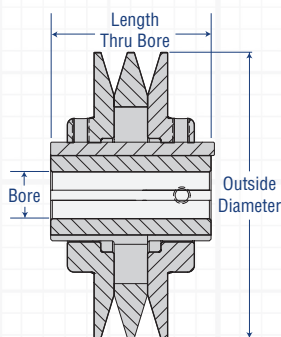
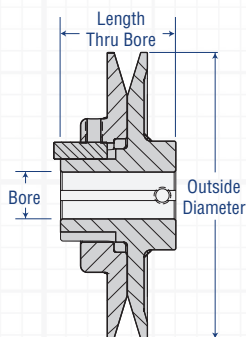
Bored-to-Size and MST® Bushed



| | | | | | |
|--|----------|-----------|------------|------------|------------------------------------|
| # of Grooves | 2 | AK | 104 | 3/4 | Bore or Bushing |
| If not listed, sheave is a single groove | | | | | Bore in Inches MST® "H" Bushing |
| Belt Selection | | | | | Approximate OD |
| AK 3L, 4L, A Section | | | | | 1 decimal point: 10.4" |
| BK 4L, 5L, A, B Section | | | | | |

Variable Pitch Sheaves

Bored-to-Size



| | | | | | |
|------------------------------|----------|-----------|-----------|--------------|-----------------------|
| # of Grooves | 1 | VP | 68 | 1 3/4 | Bore |
| | | | | | Inches |
| Variable Pitch | | | | | Approximate OD |
| Belt Selection: | | | | | 1 decimal point: 6.8" |
| 3L, 4L, 5L, A, B, 5V Section | | | | | |

- Full Line in Stock Now
- Wide Variety for HVAC and Lawn and Garden Equipment Applications

Call *Martin* for all your Made-to-Order Needs!

www.martinsprocket.com - 817 258 3000

Copyright© 2017 Martin Sprocket & Gear, Inc. • All Rights Reserved • CARD-FHP 1/25/2017