



**THE**  
*strongest*  
**link**  
in the **VALUE chain**

**Product:**

- Available in the most popular sizes and combinations of drive and double pitch chain.
- Constructed with solid rollers to withstand shock load.

**Performance:**

- Pre-lubricated and pre-stretched for minimum run-in time.
- Engineered to meet all ANSI standards for strength and reliability.

**Price:**

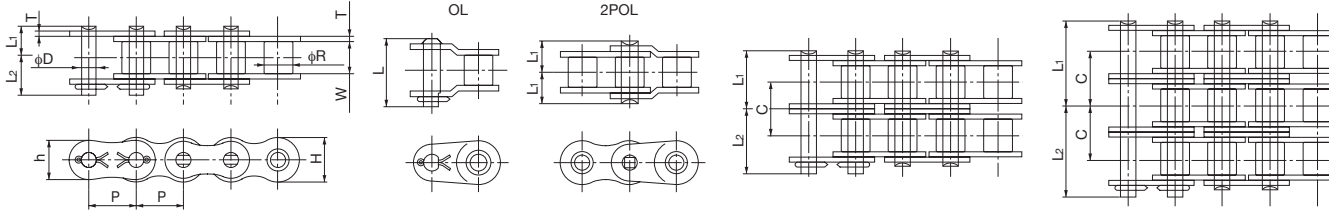
- Value priced to meet your requirements.

**LOTUS**  
**CHAIN**



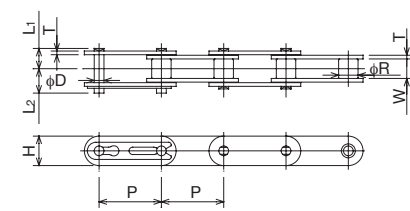
# Specifications

Lotus Drive Chain



Note: Sling clip type connecting links are supplied for size 60 and smaller chain.

Double Pitch Lotus Chain



Note: Gøtter type connecting links are supplied for size C2080H.

All dimensions in inches unless otherwise stated.

Chain Number	Pitch P	Roller Dia. R	Width Between Inner Link Plates W	Link Plate			Pin					Transverse Pitch C	ANSI Std. Minimum Tensile Strength (lbs.)	Approx. Weight (lbs./ft.)
				Thickness T	Height H	Height h	Dia. D	Length L <sub>1</sub> + L <sub>2</sub>	Length L <sub>1</sub>	Length L <sub>2</sub>	Offset Pin Length L			
<b>Single Strand</b>														
35LOTRB	0.375	* 0.200	0.188	0.049	0.354	0.307	0.141	0.500	0.230	0.270	0.531	-	1,950	0.22
40LOTRB	0.500	0.312	0.313	0.059	0.472	0.409	0.156	0.717	0.325	0.392	0.709	-	3,120	0.43
50LOTRB	0.625	0.400	0.375	0.079	0.591	0.512	0.200	0.874	0.406	0.469	0.886	-	4,880	0.70
60LOTRB	0.750	0.469	0.500	0.094	0.713	0.614	0.235	1.087	0.506	0.581	1.110	-	7,030	1.03
80LOTRB	1.000	0.625	0.625	0.126	0.949	0.819	0.313	1.398	0.640	0.758	1.417	-	12,500	1.78
100LOTRB	1.250	0.750	0.750	0.157	1.185	1.024	0.376	1.677	0.778	0.900	1.748	-	19,530	2.67
120LOTRB	1.500	0.875	1.000	0.189	1.425	1.228	0.437	2.118	0.980	1.138	2.197	-	28,120	3.97
140LOTRB	1.752	1.000	1.000	0.220	1.661	1.433	0.500	2.307	1.059	1.248	2.343	-	38,280	5.02
160LOTRB	2.000	1.125	1.250	0.252	1.898	1.638	0.563	2.705	1.254	1.451	2.795	-	50,000	6.77
<b>Double Strand</b>														
35-2LOTRB	0.375	* 0.200	0.188	0.049	0.354	0.307	0.141	0.898	0.429	0.469	0.965	0.398	3,900	0.46
40-2LOTRB	0.500	0.312	0.313	0.059	0.472	0.409	0.156	1.283	0.608	0.675	1.319	0.567	6,240	0.85
50-2LOTRB	0.625	0.400	0.375	0.079	0.591	0.512	0.200	1.594	0.762	0.833	1.646	0.713	9,760	1.39
60-2LOTRB	0.750	0.469	0.500	0.094	0.713	0.614	0.235	1.988	0.955	1.033	2.071	0.898	14,060	2.04
80-2LOTRB	1.000	0.625	0.625	0.126	0.949	0.819	0.313	2.551	1.217	1.335	2.657	1.154	25,000	3.53
100-2LOTRB	1.250	0.750	0.750	0.157	1.185	1.024	0.376	3.091	1.484	1.606	3.209	1.409	39,060	5.26
120-2LOTRB	1.500	0.875	1.000	0.189	1.425	1.228	0.437	3.906	1.874	2.031	4.063	1.787	56,240	7.84
140-2LOTRB	1.752	1.000	1.000	0.220	1.661	1.433	0.500	4.232	2.022	2.211	4.421	1.925	76,560	9.94
160-2LOTRB	2.000	1.125	1.250	0.252	1.898	1.638	0.563	5.012	2.407	2.604	5.205	2.303	100,000	13.43
<b>Triple Strand</b>														
60-3LOTRB	0.750	0.469	0.500	0.094	0.713	0.614	0.235	2.906	1.404	1.502	2.972	0.898	21,090	3.04
80-3LOTRB	1.000	0.625	0.625	0.126	0.949	0.819	0.313	3.705	1.795	1.909	3.815	1.154	37,500	5.29
<b>Double Pitch</b>														
C2040LOTRB	1.000	0.312	0.313	0.059	0.472	-	0.156	0.717	0.325	0.392	-	-	3,125	0.34
C2050LOTRB	1.250	0.400	0.375	0.079	0.591	-	0.200	0.878	0.406	0.472	-	-	4,880	0.56
C2060HLOTRB	1.500	0.469	0.500	0.126	0.677	-	0.235	1.224	0.573	0.652	-	-	7,030	1.01
C2080HLOTRB	2.000	0.625	0.625	0.157	0.906	-	0.313	1.543	0.720	0.823	-	-	12,500	1.61

\* denotes that size 35 is rollerless. Dimension shown is for the bushing diameter.