



**SOURCE  
ATLANTIC**



## ADVANCED COATING TECHNOLOGY



### THE BLUE SEAL ADVANTAGE. WE KEEP YOUR EQUIPMENT IN TOP CONDITION!

Blue Seal is specifically engineered to be an extremely durable, long-lasting coating system. It is a glass filled epoxy-vinyl-ester coating system, which expands the serviceability of traditional glass flake coatings. Blue Seal **decreases maintenance** and **operational cost** while having **zero impact on the environment**.

#### Applicable Industries:

- |                   |             |
|-------------------|-------------|
| ● Marine          | ● Oil & Gas |
| ● Food Processing | ● Military  |
| ● Municipalities  | ● Utilities |
| ● Pulp & Paper    | ● Mining    |

For more information, or to order these products, contact your account manager.

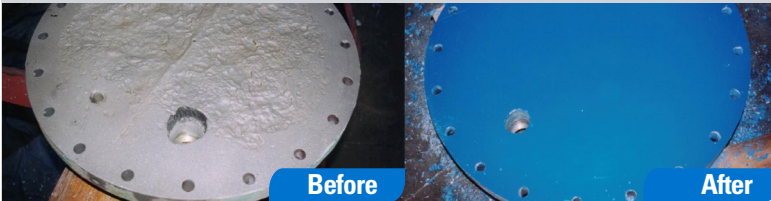
[www.sourceatlantic.ca](http://www.sourceatlantic.ca)





## SOURCE REVIEW

### Industrial End Housing



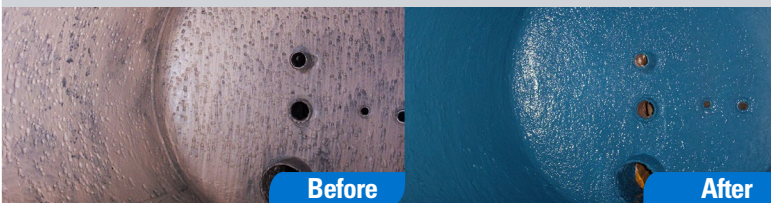
### Industrial Pipes



### Kort Nozzle



### Chemical Tanks



### Pumps & Impellers



### The Blue Seal Advantage:

- Increased adhesive strength
- Environmentally clean
- Low coefficient of friction
- Superior resistance to mechanical stress
- Excellent resistance to abrasion
- Virtually impermeable to liquids or vapor
- High impact resistance
- Superior strength
- Extreme corrosion resistance
- Increased elasticity
- Excellent thermal stabilization
- Extended service life
- High dielectric strength



For more information, or to order these products, contact your account manager.