

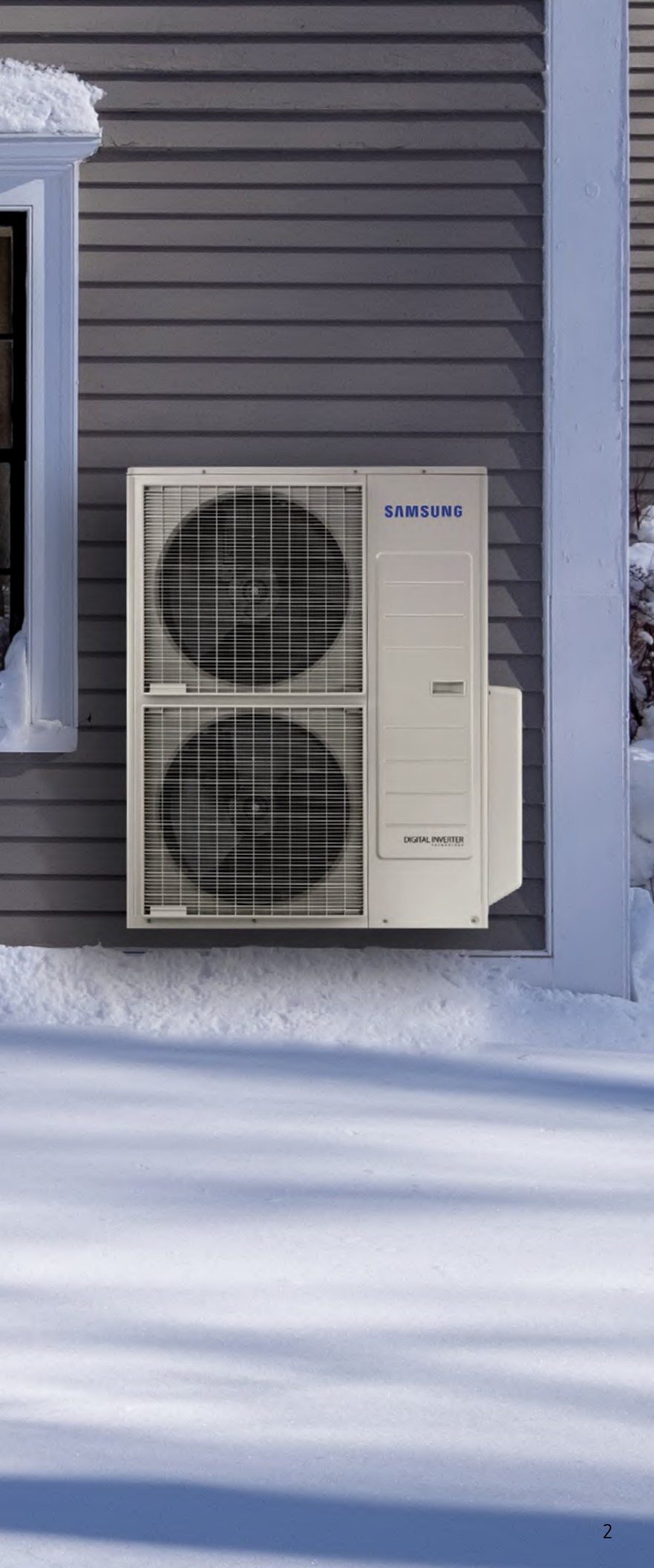
# SAMSUNG

High performance heating,  
even in the coldest climates.



Product Registration Required  
Conditions Apply





# Prevent the pile-up

## Snow Accumulation Prevention

The time of accumulated snow on idle outdoor units is over. When the temperature is below 41°F (5°C), fans will operate every 30 minutes on idle outdoor units to prevent snow buildup. Featured on all Max Heat® and Premium systems.

# No more cold feet

## Base Pan Heaters

Defrost water is not a problem for Samsung HVAC systems. When ice is removed from the coil after the defrost cycle, the base pan heaters prevent it from refreezing at the bottom of the outdoor unit.

Base pan heaters come standard on WindFree™ Max Heat®, FJM Premium and CAC Premium outdoor units. An accessory base pan heater kit is available for DVM S2 Max Heat®.

## Base Pan Heater

In order to prevent refreezing of condensate water, a base pan heater is used.



## Oval Shaped Drain Holes

Sufficient size holes to prevent blockage due to snow/ice accumulation.







# SmartThings

Samsung's SmartThings app puts control at your fingertips, allowing you to remotely adjust temperatures, customize settings, and receive real-time updates on your system's performance. With energy efficiency more important than ever, SmartThings Energy helps you reduce your carbon footprint and lower energy costs. It analyzes your usage habits and provides personalized recommendations to improve efficiency. Plus, it lets you easily manage the energy consumption of not just your Samsung appliances, but your entire home.



## Explore Rebates

Is your inefficient heating and cooling system driving your monthly energy bills up? With rebates and incentives to install electric heat pump systems, there's never been a better time to add innovation, efficiency and comfort to your home while putting a stop to runaway energy bills. Find out which Samsung products qualify for homeowner rebates provided by federal, state, or local governments and utility companies.



Learn more at  
[SamsungHVAC.com/rebates](https://SamsungHVAC.com/rebates)

## Programs in The United States and Canada

Explore more opportunities for homeowners in the US and Canada to receive rebates or credits for installing energy-efficient heat pumps.



[U.S.](#)



[Canada](#)



# WindFree™ Max Heat®

## Single Zone Systems

For homeowners in cold climates that have a single room or addition that has different air conditioning needs than the rest of the house, the WindFree™ Max Heat® ductless mini split system is the perfect solution. This system provides 100% heating performance down to -4°F (-20°C) with high heating output at -22°F (-30°C).

The WindFree™ Max Heat® condensing unit is compatible with the WindFree™ Premium indoor unit.

Available Capacities: 9K, 12K, 15K, 18K and 24K Btu/h



Find all WindFree™ Max Heat® specifications on [SamsungHVAC.com](https://www.samsunghvac.com).





## WindFree™\* Cooling Technology

Samsung's exclusive WindFree™\* Cooling technology maintains the desired temperature in your home, eliminates cold drafts and reduces energy use by delivering air through micro holes on the indoor unit to produce a dispersed and gentle flow of air defined as "still air."



## AI Technology

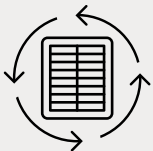
Enabling AI Energy mode in SmartThings takes energy savings to the next level. By learning your usage patterns and analyzing room conditions, AI Energy mode reduces energy use by up to 20%^ by automatically adjusting the temperature, fan speed, and compressor speed of the system.

Requires connection to the internet and the SmartThings app.



## Motion Sensor

The Motion Detection Sensor (MDS) on our WindFree™ Max Heat® optimizes energy savings and comfort in any space. Users can choose between direct airflow, to have air follow the user around the room, or indirect airflow, where the user can have the air blow away from them in the room. When the MDS recognizes that there are no occupants in the space, the system can automatically implement energy saving measures to reduce energy use.



## Reusable Filter

Our WindFree™ Max Heat® comes with a washable, reusable filter located on the top of the unit, making it easy to remove, clean and put back. Ensuring you have a clean air filter on a regular basis can help improve your air conditioner's efficiency and boost the air quality in your home.



## Freeze Wash

The Freeze Wash function on our WindFree™ Max Heat® allows users to maintain optimal performance with the push of a button. Freeze Wash quickly frosts the indoor unit heat exchanger, defrosts the ice, and then dries the coil washing away dirt and dust.

# FJM Premium

## Multi-Zone Systems

The Free Joint Multi (FJM) Premium system supports 2 to 4 indoor units for multi-zone control and provides 100% heating performance at 5°F (-15°C) with high heating output at -13°F (-25°C), making it the ideal solution for homeowners in cold climates. The small footprint and light weight of the FJM Premium outdoor unit makes it easy to maneuver and saves space in the van compared to other unitary heat pump products.



Available Capacities: 20K, 24K, 30K and 36K Btu/h

## Get the best equipment, best suited for your project.



**Slim Duct**  
9K, 12K and 18K Btu/h



**Duct S**  
9K, 12K, 15K and 18K Btu/h



**Multi-Position  
Air Handler (MPAH)**  
12K, 18K and 24K Btu/h



**WindFree™ Premium**  
7K, 9K, 12K, 15K, 18K and 24K Btu/h



**WindFree™ IAQ**  
7K, 9K, 12K, 15K, 18K and 24K Btu/h



**WindFree™ Standard**  
7K, 9K, 12K, 15K, 18K and 24K Btu/h



**WindFree™\*  
Mini 4-Way Cassette**  
9K, 12K and 18K Btu/h



**WindFree™\*  
I-Way Cassette**  
9K and 12K Btu/h



**Console**  
9K, 12K, 15K and 18K Btu/h



Find all FJM Premium specifications on [SamsungHVAC.com](https://www.samsunghvac.com).



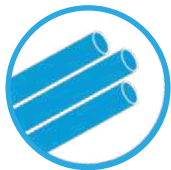
### Ultimate Zoning Solution

A multi-zone system uses multiple indoor units connected to a single outdoor unit, giving you greater control over your home comfort and avoids wasting energy on conditioning unoccupied spaces.



### Flexible Installation

This versatile system provides additional flexibility when installing a system that requires more than one zone of comfort, without the additional parts, installation, and added costs of several outdoor units.



### Home Run Refrigerant Piping

Samsung's home-run refrigerant piping with flared connections requires no refrigerant branches or brazing. This setup offers zoning benefits, reduces energy loss, and enhances system flexibility, making it a popular choice for efficient and customizable heating and cooling solutions in homes.



### Smart Heat Source Management

When configured for dual-fuel functionality, the FJM system can switch between the primary and a secondary heat source based on heating performance and cost-effectiveness. Conversely, when temperatures rise, the secondary heat source is restricted, allowing the energy-efficient heat pump to take over. These features offer the perfect balance of comfort, cost savings, and sustainability, giving you flexible control to reduce energy bills and your carbon footprint.



### Emergency Heat Operation

Auxiliary heat sources like baseboard radiators, hot water coils, and duct heaters can automatically activate in emergency situations to provide reliable heat if the primary system encounters issues. This capability is available for select error codes, ensuring safe operation when needed most.



# CAC Premium

## Single Zone Systems

With the ability to provide 100% heating performance at -4°F (-20°C)<sup>1</sup> with high heating output at -13°F (-25°C), the Commercial Air Conditioner (CAC) Premium system is the ideal solution for buildings in areas that experience low outdoor ambient temperature.

Available Capacities: 9K, 12K, 18K, 24K, 30K, 36K, and 48K Btu/h



## Our indoor units have major advantages.



### Multi-Position Air Handler (MPAH)

- Capable of upflow, horizontal-left, and horizontal-right orientations
- Ability to handle external static pressure up to 1.0" WC



### WindFree™\* 4-Way Cassette

- WindFree™\* Cooling technology (available in cooling mode only)
- Independent louver control within a 32-65° range
- Fascia panel sold separately



### Duct S

- Automatically adjusts the fan speed based on the duct system external static pressure (ESP) for a simpler, faster installation.
- All internal components are accessible from the top, side, or bottom of the unit for simpler, faster service.

<sup>1</sup>For select system combinations.



Find all CAC Premium specifications on [SamsungHVAC.com](https://www.samsunghvac.com).





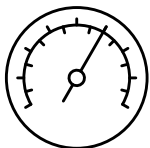
### **WindFree™\* Cooling Technology**

Samsung's exclusive WindFree™\* Cooling technology maintains the desired temperature in your home and eliminates cold drafts and reduces energy use by delivering air through micro holes on the indoor unit to produce a dispersed and gentle flow of air defined as "still air."



### **AI Technology**

Equipped with AI technology to monitor indoor temperature, outdoor temperature, set temperature, and operating time to learn the patterns within your home and automatically adjust system operation to maximize comfort.



### **High Performance**

Utilizes a twin rotary BLDC compressor with highly stable moving parts. This results in reduced torque variation as compared to a conventional single BLDC compressor.



### **Quiet Operation**

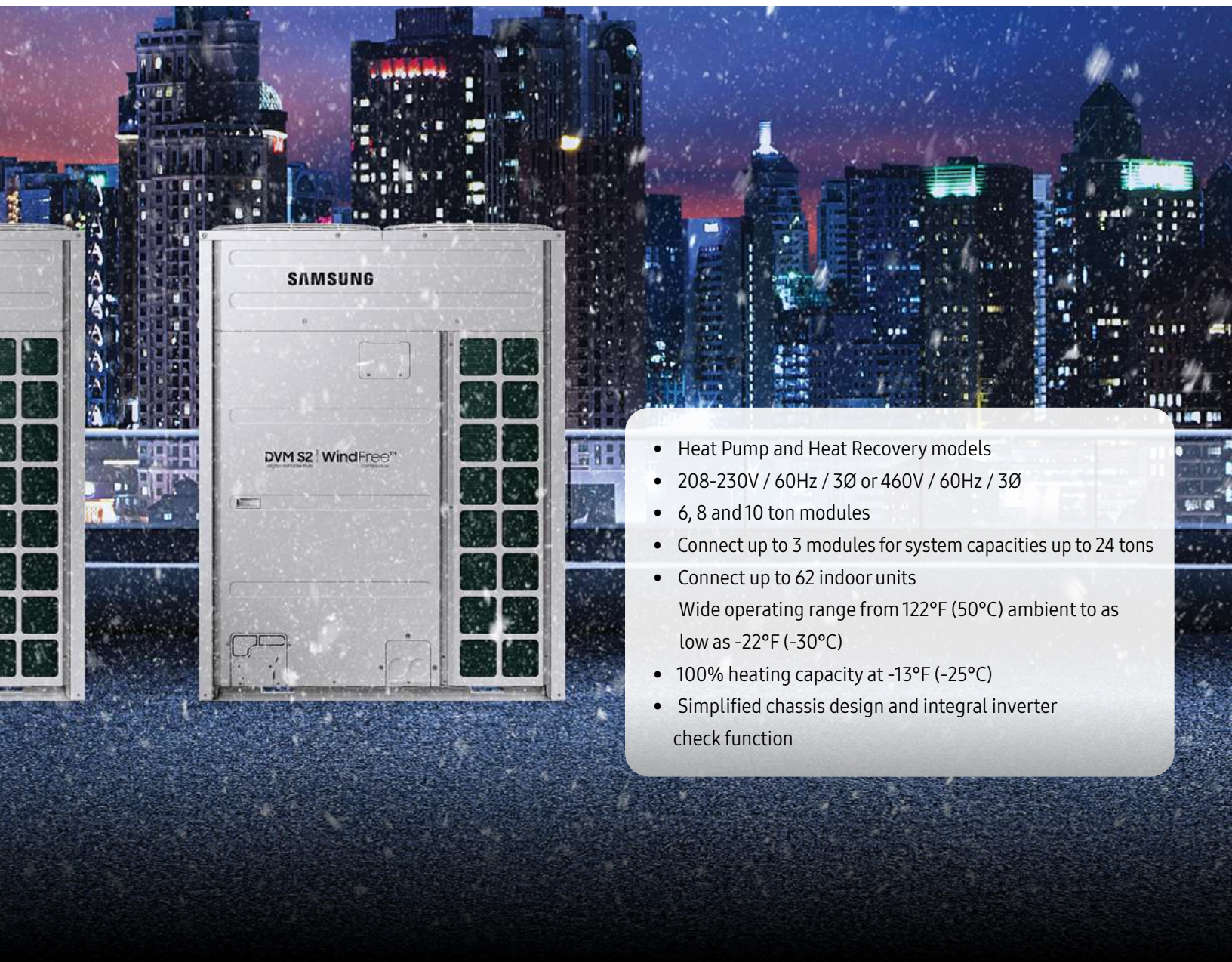
Low outdoor unit sound levels of only 51dB(A) can be further reduced using the Night Time Quiet mode to reduce operating noise from the outdoor unit at night.



# DVM S2 Max Heat®

## VRF Systems

With the ability to produce high heating capacity at -22°F (-30°C), Samsung's DVM S2 Max Heat® systems are the ideal solution for commercial buildings in areas that experience extreme temperatures.



- Heat Pump and Heat Recovery models
- 208-230V / 60Hz / 3Ø or 460V / 60Hz / 3Ø
- 6, 8 and 10 ton modules
- Connect up to 3 modules for system capacities up to 24 tons
- Connect up to 62 indoor units
- Wide operating range from 122°F (50°C) ambient to as low as -22°F (-30°C)
- 100% heating capacity at -13°F (-25°C)
- Simplified chassis design and integral inverter check function



Find all DVM S2 Max Heat® specifications on [SamsungHVAC.com](https://www.samsunghvac.com).





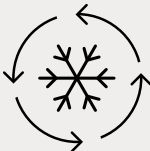
### Active AI Technology

DVM S2 systems feature Artificial Intelligence (AI) with Deep Neural Network algorithms<sup>1</sup> to optimize system operation with high and low pressure control, defrost cycle activation and operation, and low refrigerant monitoring. The new AI technology allows the equipment to operate at exact target pressures and temperatures based on application to save energy.



### AI High and Low Pressure Control

Learns the recent cooling operation pattern<sup>2</sup> so that the memory cycle status can help reach a targeted low pressure to create the cooling environment desired by the user. To control high pressure, the system automatically recognizes the installed system pipe length and vertical separation and adjusts the target high pressure and reduces unnecessary high pressure, thereby reducing the energy used by the compressor by up to 15%<sup>2</sup>.



### AI Low Refrigerant Monitoring

Uses data from various sensors embedded in indoor and outdoor units to determine the amount of refrigerant required to maintain the system and ensure the best performance<sup>3</sup>. The system also monitors refrigerant volume in real time during cooling operation and displays a warning code for checkup on the outdoor unit PCB and in central controls (conditions apply).



### AI Defrost

Learns and trends fan motor current to detect ice formation on the condenser coil during heating operation. This also detects temperature in order to increase heating operation duration between defrost cycles to reduce overall defrost cycle duration.

# SAMSUNG

SamsungHVAC.com  
MHS 02.2025-V2

\*The WindFree™ unit delivers an air current that is under 0.15 m/s while in WindFree™ mode. Air velocity that is below 0.15 m/s is considered "still air" as defined by ASHRAE 55-2013 (American Society of Heating, Refrigerating, and Air-Conditioning Engineers).

Select models are ENERGY STAR® labeled. Proper sizing and installation of equipment is critical to achieve performance. Split system air conditioners and heat pumps (excluding ductless systems) must be matched with appropriate coil components to meet ENERGY STAR® criteria. Ask your contractor for details or visit [www.energystar.gov](http://www.energystar.gov). Available for download on the Google™ Play store and App Store®. A network connection is required. Samsung application account is necessary.

<sup>1</sup>Machine learning technology built on artificial neural networks (ANN) to enable computers to learn on their own using multiple data points.

<sup>2</sup>Conditions apply. Refer to technical documents for more information.

<sup>3</sup>Requires an initial dedicated refrigerant check function during commissioning.